

Magnavox USA

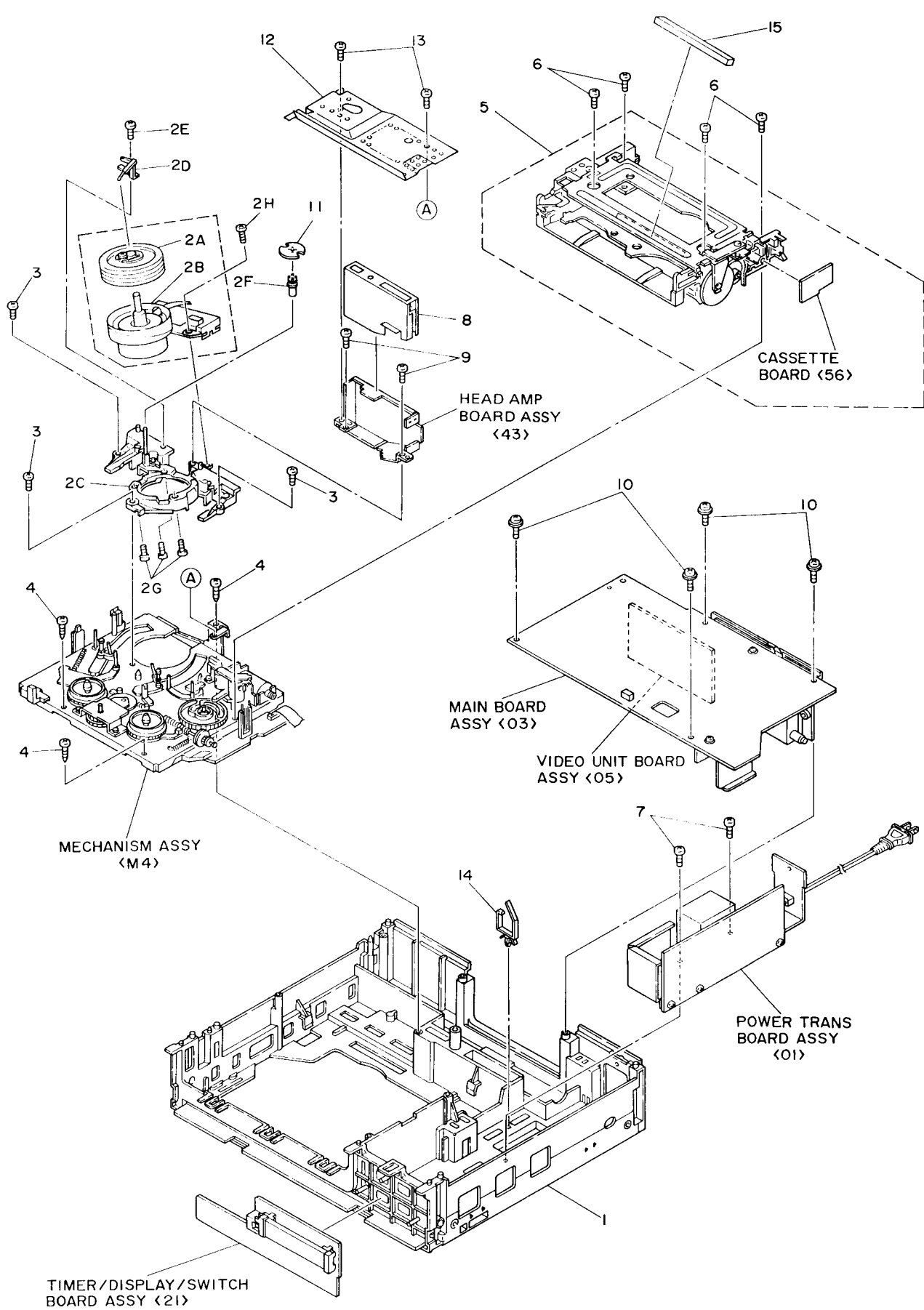
Models: VR9020AT01

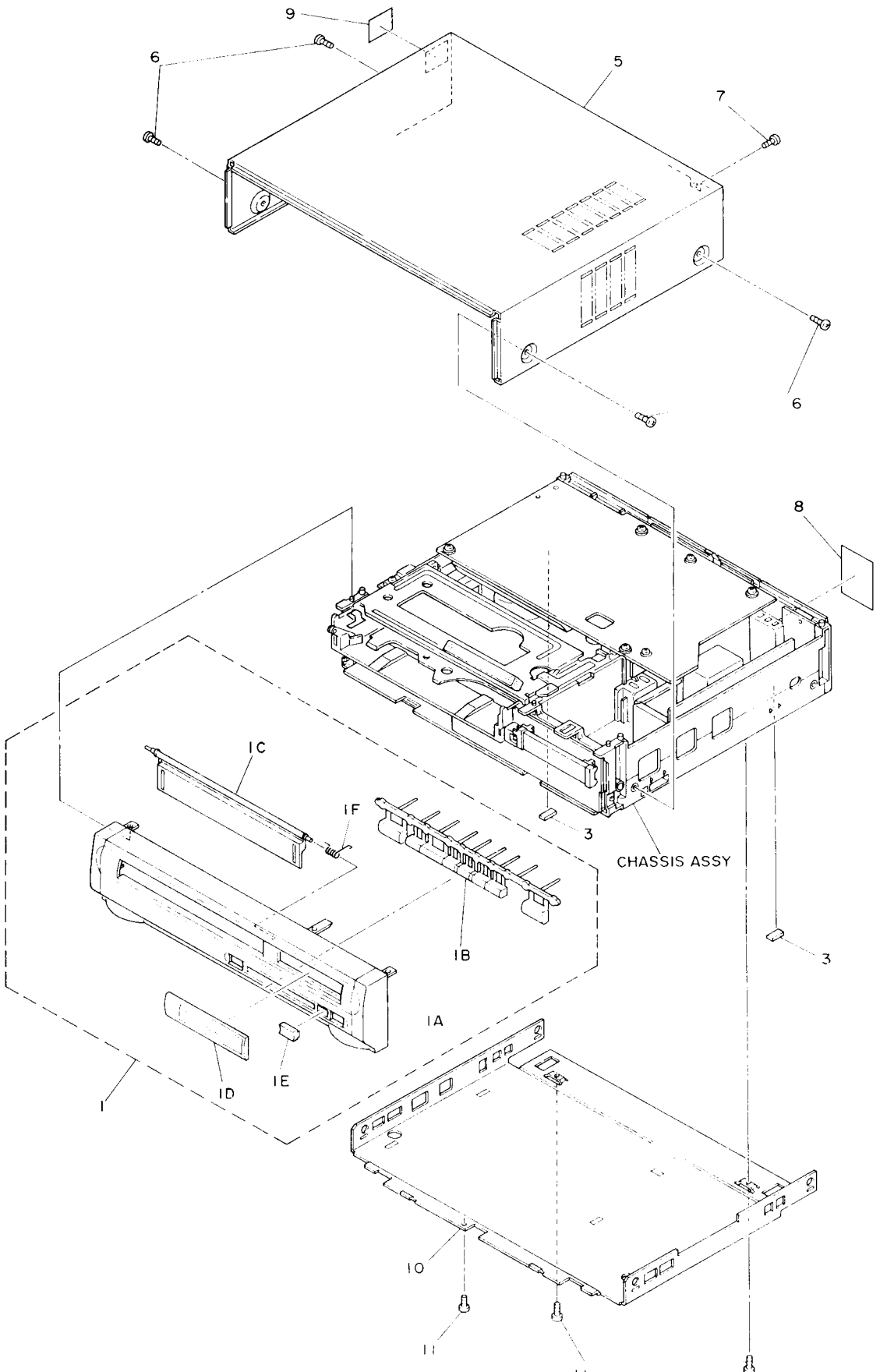
VR9040AT01

Magnavox Canada

Models: VR9020AT01

VR9040AT01





MECHANICAL REPLACEMENT PARTS LIST

Model No. VR9020AT01, VR9040AT01

ONLY USE ORIGINAL VIDEO REPLACEMENT PARTS : Maintain original FUNCTION and RELIABILITY of repaired units, only use ORIGINAL REPLACEMENT PARTS which are listed with their part numbers in the parts list section of the Service Manual.

Note:
1. Be sure to make your orders of replacement parts according to this list.

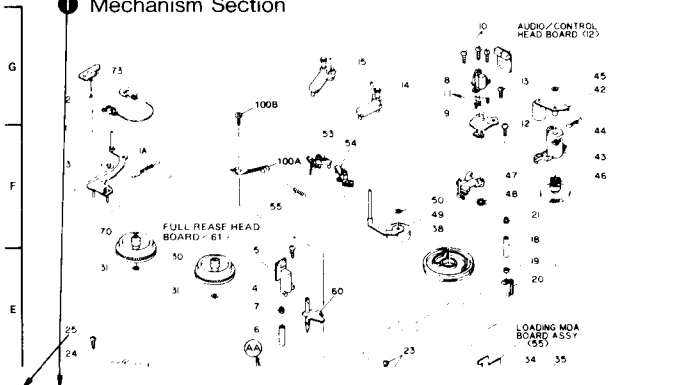
COMPARISON CHART OF MODELS & MARKS

MODEL	MARK	MODEL	MARK
VR9020AT01	A	VR9040AT01	B

<The complete Exploded Views are shown in this manual.>

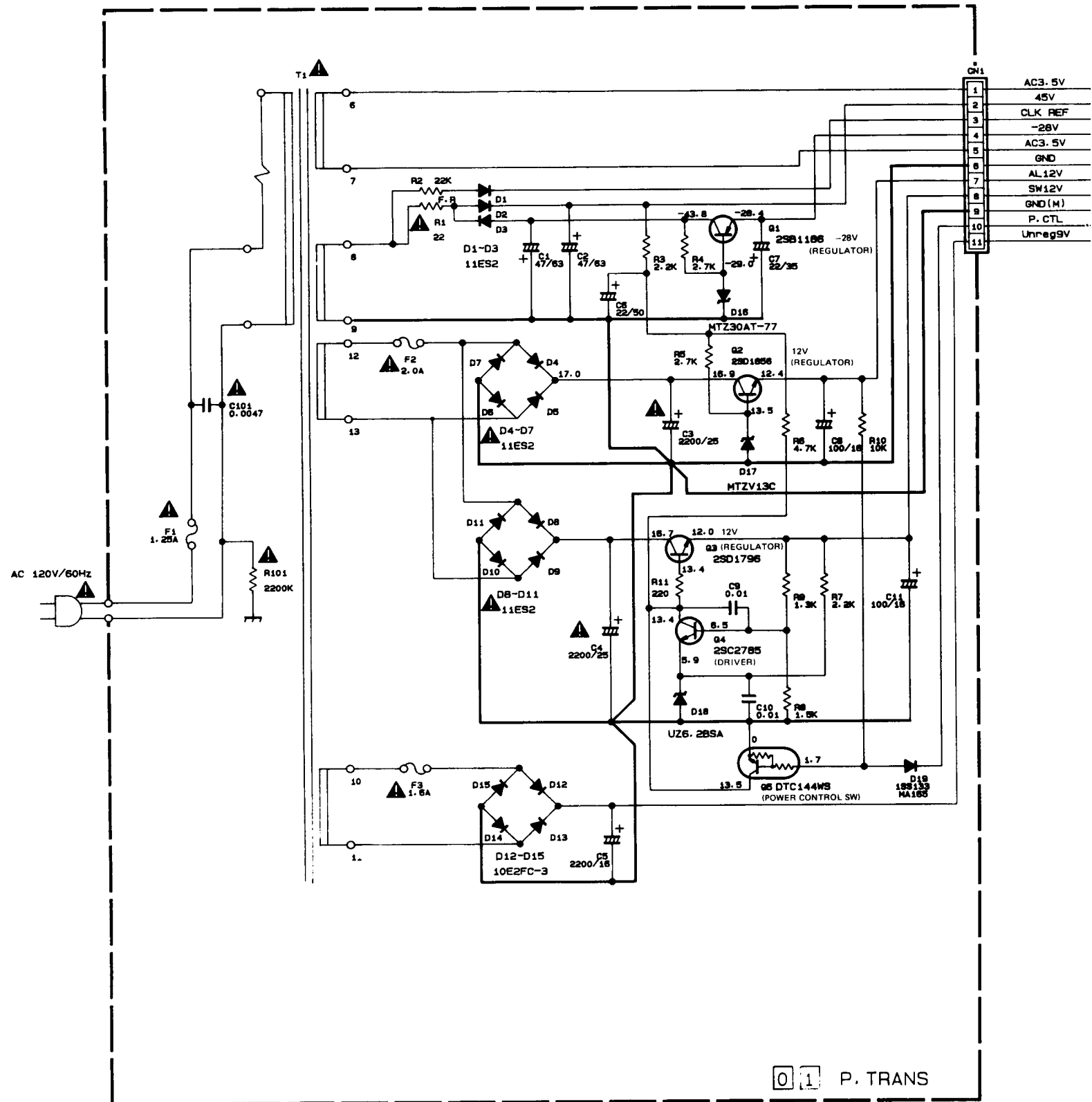
EXPLODED VIEWS

1 Mechanism Section

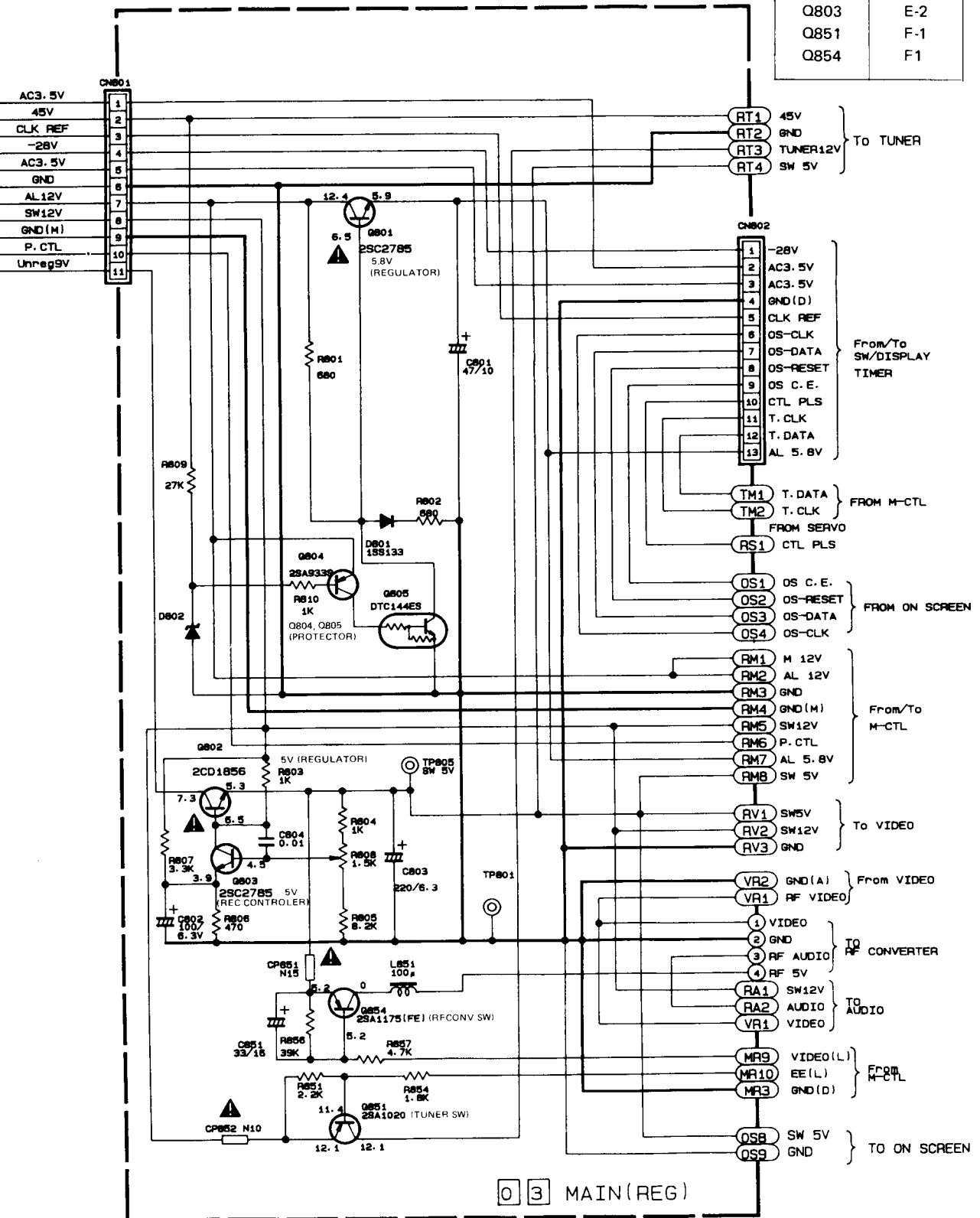


Item No.	Drawing No.	Description	Pcs/ Set	LD Number	PCEC Part No.
(MECHANISM ASSEMBLY)					
1	1	TENSION ARM ASSEMBLY	1	PQ43497G-8	4835 402 97415
1A	1	TENSION SPRING	1	PQ43500	---
2	1	TENSION BAND ASSEMBLY	1	PQ45023A	4835 463 17016
3	1	ADJUST PIN	1	PQ43503-1-4	---
4	1	FULL ERASE HEAD	1	PU60616	4835 249 47012
5	1	SCREW	1	SDSF2614Z	---
6	1	ROLLER	1	PQ43505-1-1	4835 528 77054
7	1	GP CAP	1	PQ43506	4835 443 67183
8	1	AUDIO/CTL HEAD	1	PEHE0174	4835 249 97039
9	1	HEAD BASE	1	PQ43509	---
10	1	SCREW	3	PQ43687A	---
11	1	COMPRESSION SPRING	3	PQM30002-192	4835 492 57049
12	1	SCREW	1	SPSF2608M	---
13	1	SCREW	1	SPSP2606Z	---
14	1	POLE BASE ASSEMBLY (TAKE UP)	1	PU61103-2	4835 464 57149
15	1	POLE BASE ASSEMBLY (SUPPLY)	1	PU61151-2-3	4835 464 57151
16	1	STOPPER 1	1	PQ43524	4835 462 57003
17	1	STOPPER 2	1	PQ43525	4835 462 57004
18	1	TAPE GUIDE	1	PQ43526-1-3	4835 402 97416
19	1	GUIDE FLANGE	1	PQ43670-1-1	4835 402 97424
20	1	TAPE GUARD	1	PQ43675	4835 402 97425
21	1	GP CAP	1	PQ43506	4835 443 67183
22	1	CAPSTAN MOTOR	1	PU61285	4835 361 27081
23	1	SCREW	3	SPSG2608Z	---
24	1	IDLER GEAR ASSEMBLY	1	PU60618-1-3	4835 522 37221
25	1	SCREW	2	SPST2606Z	---
26	1	CLUTCH ASSEMBLY	1	PU60953-1-2	4835 528 27011
27	1	SLIT WASHER	1	PQM30017-8	4835 530 87148
28	1	CHANGE LEVER ASSY	1	PQ43532A-1	4835 402 97417
29	1	BELT	1	PQM30003-24	4835 358 37115
30	1	REEL DISK (TAKE UP)	1	PU60858-1-4	4835 528 17028
31	1	SPACER	2	PQM30018-54	4835 532 97089
32	1	LOAD ARM SUPPLY	1	PQ43537A	4835 402 97418
33	1	LOAD ARM TAKE UP	1	PQ43542B	4835 402 97419
34	1	MODE MOTOR ASSEMBLY	1	PQ43676B-5	4835 361 27079
	1	or MODE MOTOR ASSEMBLY	1	PQ43676C	4835 361 27079
35	1	SCREW	2	SPST2606Z	---
36	1	WORM CLUTCH ASSEMBLY	1	PQ43548A-3	4835 522 37218
37	1	BELT	1	PQM30003-23	4835 358 37114
38	1	CONTROL CAM	1	PQ32413-1-6	4835 528 37014
39	1	PLATE ASSEMBLY	1	PQ43555B-6	4835 464 57146
40	1	SLIT WASHER	1	PQM30017-12	4835 530 87147

Item No.	Drawing No.	Description	Pcs/ Set	LD Number	PCEC Part No.
41	1	SLIT WASHER	1	PQM30017-8	4835 530 87148
42	1	PINCH ROLLER ARM	1	PQ43558C	4835 402 97421
43	1	PINCH ROLLER PRESS LEVER	1	PQ32415	4835 402 97414
44	1	TENSION SPRING	1	PQM30001-233	4835 492 67057
45	1	SLIT WASHER	1	PQM30017-12	4835 530 87147
46	1	PINCH ROLLER CAM	1	PQ32416-2	4835 528 37015
47	1	GUIDE ARM ASSEMBLY	1	PQ43567A-9	4835 402 97422
48	1	TORSION SPRING	1	PQ43569-1-3	4835 492 57051
49	1	HALF LOADING GEAR ASSEMBLY	1	PQ45073A	4835 522 37219
50	1	E RING	1	REE3000	---
51	1	CANCEL LEVER ASSEMBLY	1	PQ43575A-5	4835 402 97423
51A	1	TENSION SPRING	1	PQM30001-273	---
51B	1	TENSION SPRING	1	PQM30001-237	---
51C	1	TENSION SPRING	1	PQM30001-274	---
52	1	HOOK ASSEMBLY	1	PQ43578A-2	4835 464 57147
52A	1	TENSION SPRING	1	PQM30001-238	---
53	1	MAIN BRAKE ASSEMBLY (SUPPLY)	1	PQ43581A-6	4835 466 47021
54	1	MAIN BRAKE ASSEMBLY (TAKE UP)	1	PQ43582A-2	4835 466 47022
55	1	TENSION SPRING	1	PQM30001-251	4835 492 67059
56	1	SUB BRK ASSEMBLY	1	PQ43583A	4835 466 47023
57	1	TENSION SPRING	1	PQM30001-235	4835 492 67058
58	1	CAPSTAN BRAKE ASSY	1	PQ43584A-5	---
59	1	COMPRESSION SPRING	1	PQM30002-201	---
60	1	LED HOLDER	1	PU60621-1-2	---
61	1	REC SAFETY SWITCH	1	PU61281	4835 276 17181
62	1	SLIDE SWITCH	1	PU60622-1-1	4835 277 27055
63	1	SCREW	1	SDSF2614Z	---
64	1	PWB HOLDER	1	PQ32516	4835 256 97173
65	1	SCREW	2	SDST2616Z	---
66	1	SCREW	2	GPSF2608Z	---
70	1	REEL DISK SUPPLY	1	PU60859-1-4	4835 528 17029
73	1	TENSION BAND BRACKET	1	PQ44246	---
100	1	MAIN DECK ASSEMBLY	1	PQ20650H	---
100A	1	EARTH PLATE	1	PQ43849	---
100B	1	SCREW	1	SPST2604Z	---
(CHASSIS ASSEMBLY)					
1	2	BOTTOM CHASSIS	1	PQ11108	---
2A	2	UPPER CYL ASSEMBLY	1	---	---
		VR9020 (2 HEAD)	1	3103 149 04550	4835 691 27157
		VR9040 (4 HEAD)	1	3103 149 04560	4835 691 27159
2B	2	CYL DD ASSEMBLY	1	---	---
		VR9020	1	3103 149 04580	4835 691 27158
		VR9040	1	3103 149 04590	4835 691 27161
2C	2	DRUM BASE ASSEMBLY	1	PDM3290A	4835 464 57143
2D	2	BRUSH ASSEMBLY	1	PDM4269A	4835 464 57145
2E	2	SCREW	1	SPSG2606Z	---
2F	2	ROLLER ASSEMBLY	1	PDM4226A	4835 464 57144
2G	2	SCREW	3	SPSP2606Z	---
2H	2	SCREW	1	SPSP2606Z	---
3	2	SCREW	3	SDST2610Z	---
4	2	SCREW	3	SDSF3010Z	---
5	2	CASS COMPARTMENT	1	PUS29499E	4835 464 57148
6	2	SCREW	4	SDST2608Z	---
7	2	SCREW	2	SDSG2606Z	---
8	2	SHIELD COVER	1	PQ33729	---
9	2	SCREW	2	PQ43831	---
10	2	SCREW	4	GPSF2610Z	---
11	2	INERTIA PLATE	1	PQ44230	4835 466 97073
12	2	SHIELD PLATE	1	PQ33737	---
13	2	SCREW	2	SDST2608Z	---
14	2	WIRE CLAMP	1	PU54969-2	---
15	2	SPACER	1	PQM30029 164	---
(CABT ASSEMBLY)					
1	3	FRONT PANEL ASSEMBLY	1	---	---
		VR9020	1	PQ11080A	4835 443 47198
		VR9040	1	PQ11080B	4835 443 47199
1A	3	FRONT PANEL ASSEMBLY (RAW)	1	---	---
		VR9020	1	PQ11081	---
		VR9040	1	PQ11081-2	---
1B	3	BUTTON (OPERATION)	1	PQ21147	4835 410 37119
1C	3	CASSETTE DOOR	1	PQ21148	4835 443 67182
1D	3	WINDOW	1	PQ33597	4835 450 67054
1E	3	IR WINDOW	1	PQ44990	4835 450 67055
1F	3	TORSION SPRING	1	PQ44685-1-2	4835 492 57052



Q802	E-2
Q803	E-2
Q851	F-1
Q854	F1



0 3 MAIN (REG)

To TUNER

From/To SW/DISPLAY TIMER

FROM M-CTL

FROM SERV

FROM ON SCREEN

From/To M-CTL

To VIDEO

From VIDEO

TO RF CONVERTER

TO AUDIO

FROM M-CTL

TO ON SCREEN