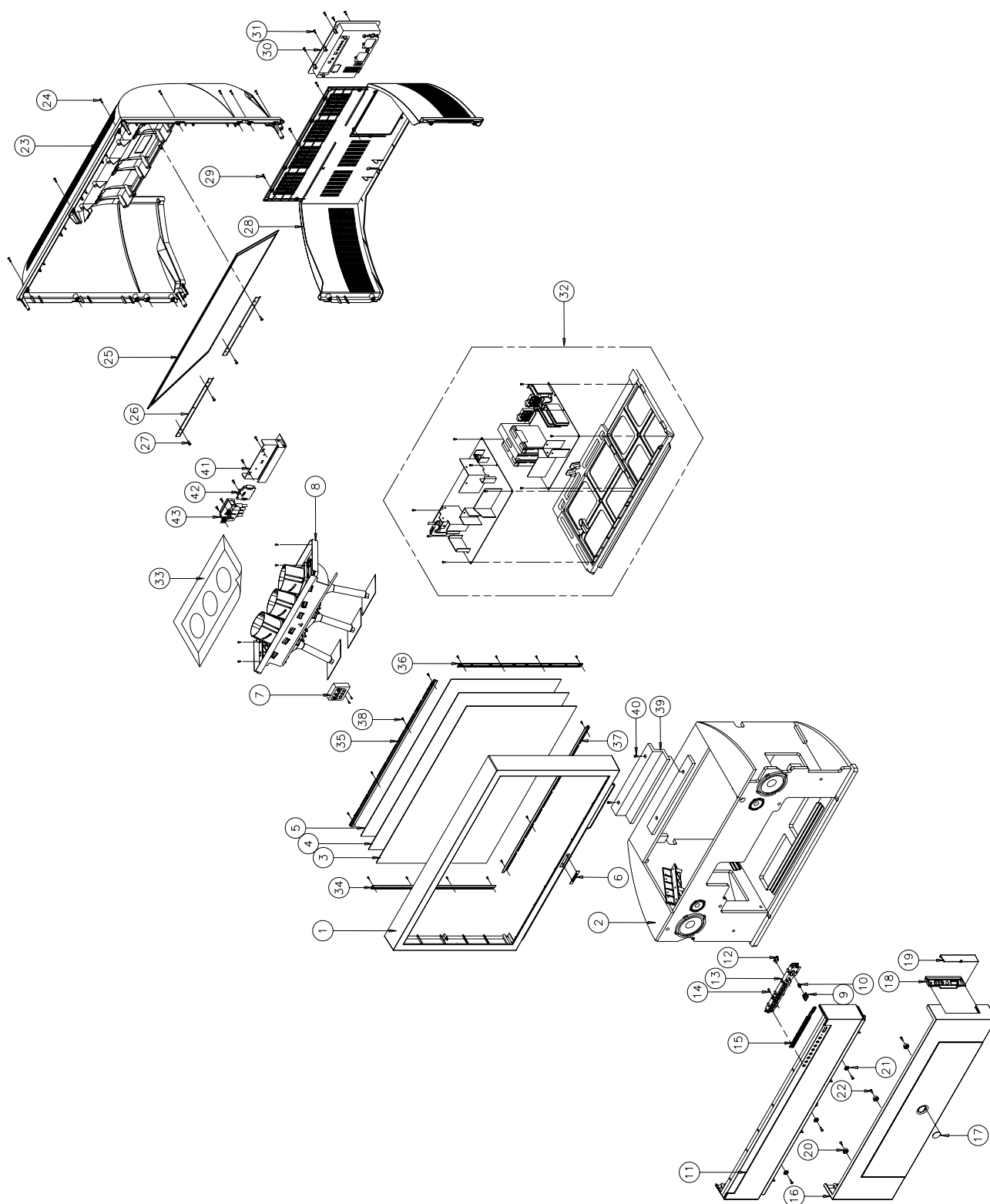


6. Exploded View & Parts List

6-1 42W5



6-2 HCM4215W3S/XAA

No	Code No	Description;Specification	Q'ty	Remark
1	AA64-02727J	CABINET-FRONT,MASK TOP;42W5,HIPS,HB,G430	1	
2	AA64-02724A	CABINET-WOOD;42W5,WOOD,SDE8336R	1	
3	AA67-00207A	SCREEN-FILTER;;T=82%,960*552*2,G=110,AG	1	
4	AA67-00193A	SCREEN-TINT;42W,958*550,T=0.73,P=052	1	
5	AA67-00193B	SCREEN-FRESNEL;42W,960*552,T=2.0	1	
6	AA64-02211D	BADGE-BRAND;72MM,AL FORGING,DG703P,SAMSU	1	
7	BP59-00005A	MODULE-FOCUS PACK ASS'Y;PJT TV,F301-P03A	1	
8	BP98-00091A	ASSY K/D-ASSY,CRT;HCM4215W3S/XAA,P55A	1	*
9	AA64-02740B	KNOB-POWER;42W5,ABS,HB,G3676,SVM3012	1	
10	AA61-60003J	SPRING-CS;-;SUS304;-;-OD6,N7,OD6;-;-;	1	
11	AA64-02726B	CABINET-PANEL CONTROL;42W5,HIPS,HB,G4309	1	
12	AA64-02742A	WINDOW-RMC,LED;42W5,PC,CLR	1	
13	BP64-00011B	KNOB-CONTROL;DP,42W5,AA64-02739B 10.5KG	1	
14	6003-001026	SCREW-TAPTITE;RH,+,B,M4,L15,ZPC(BLK),SWR	4	KC+CPC
15	AA61-01130B	GUIDE-KNOB,CONTROL;42W5,ABS HB,G3676,SVM	1	
16	AA64-02725G	CABINET-FRONT,BOT;42W5,HIPS,V0,G4309,DG7	1	
17	AA64-02743B	BADGE-DECORATION;42W5,AL,DG703P,NI,RS	1	
18	AA61-01128F	HOLDER-SIDE,A/V;42W5,ABS HB,G3676,DG703P	1	
19	AA64-02780F	DOOR-AV;42W5,ABS HB,G3676,DG703P	1	
20	AA61-01132A	VELCRO-A;COMMANDO,BST1 1/4H	3	
21	AA61-01133A	VELCRO-B;COMMANDO,BST1 1/4H	3	
22	6003-001019	SCREW-TAPTITE;RH,+,B,M4,L12,ZPC(BLK),SWR	4	VC+CPC
23	AA64-02728A	CABINET-BACK,TOP;42W5,HIPS,HB,G4309	1	
24	6003-001026	SCREW-TAPTITE;RH,+,B,M4,L15,ZPC(BLK),SWR	11	CBT+CF
25	AA67-00204A	MIRROR-FRONT;42W5,FSM,870*633*446	1	
26	BP61-00012A	BRACKET-MIRROR;DP,42W5,AA61-01123A,11.8K	2	
27	6003-001026	SCREW-TAPTITE;RH,+,B,M4,L15,ZPC(BLK),SWR	4	BM+CBT
28	AA64-02729B	CABINET-BACK,BOT;42W5,HIPS,V0,G4309	1	
29	6005-001003	SCREW-WOOD;HH,+,M4,L19,ZPC(BLK),SWRCH18A	3	HC+CW
30	BP96-00077E	ASSY COVER P-TERMINAL,ANT;DP,42W5,HIPS,V	1	
31	6003-001026	SCREW-TAPTITE;RH,+,B,M4,L15,ZPC(BLK),SWR	4	TB+RJK
32	BP91-00253A	ASSY CHASSIS;HCM4215W3S/XAA,P55A	1	*
33	AA60-00072B	SPACER-COVER,DUST;43,54,62J9,SPONGE 94HF	1	
34	BP61-00011A	BRACKET-SCREEN,RL;DP,42W5,AA61-01122A,13	2	
35	BP61-00010A	BRACKET-SCREEN,TB;DP,42W5,AA61-01121A,26	2	
36	BP61-00011A	BRACKET-SCREEN,RL;DP,42W5,AA61-01122A,13	2	
37	BP61-00010A	BRACKET-SCREEN,TB;DP,42W5,AA61-01121A,26	2	
38	AA60-10011A	SCREW-TAPTITE;-;SWRCH18A,M4,L12,HH,+,PC,	20	BS+CF
39	BP64-00029A	INLAY-SUPPORT;42W5,PS SHEET,T0.5,94V0	1	
40	6005-001003	SCREW-WOOD;HH,+,M4,L19,ZPC(BLK),SWRCH18A	2	IS+CW
41	BP94-00155A	ASSY PCB MISC-CG-AMP;DP,HCM4215W3S/XAA,P	1	
42	BP94-00239A	ASSY PCB MISC-DY-JACK;DP,HCM4215W3S/XAA,	1	
43	AA26-00101A	TRANS FBT;FWZ50A001E/FFA97513B,12KV,5P,-	1	

6-3 HCM4216W3S/XAA

No	Code No	Description;Specification	Q'ty	Remark
1	AA64-02727K	CABINET-FRONT,MASK TOP;42W5,HIPS,HB,G430	1	
2	AA64-02724A	CABINET-WOOD;42W5,WOOD,SDE8336R	1	
3	AA67-00207A	SCREEN-FILTER;;T=82%,960*552*2,G=110,AG	1	
4	AA67-00193A	SCREEN-TINT;42W,958*550,T=0.73,P=052	1	
5	AA67-00193B	SCREEN-FRESNEL;42W,960*552,T=2.0	1	
6	AA64-02211E	BADGE-BRAND;72MM,AL FORGING,SVM1132,SAMS	1	
7	BP59-00005A	MODULE-FOCUS PACK ASS'Y;PJT TV,F301-P03A	1	
8	BP98-00091A	ASSY K/D-ASSY,CRT;HCM4215W3S/XAA,P55A	1	*
9	AA64-02740A	KNOB-POWER;42W5,ABS,HB,G3676,COT	1	
10	AA61-60003J	SPRING-CS;-;SUS304;-;-OD6,N7,OD6;-;-;	1	
11	AA64-02726A	CABINET-PANEL,CONTROL;42W5,HIPS,HB,G4309	1	
12	AA64-02742A	WINDOW-RMC,LED;42W5,PC,CLR	1	
13	BP64-00011A	KNOB-CONTROL;DP,42W5,AA64-02739A 10.5KG	1	
14	6003-001026	SCREW-TAPTITE;RH,+,B,M4,L15,ZPC(BLK),SWR	4	KC+CPC
15	AA61-01130A	GUIDE-KNOB,CONTROL;42W5,ABS HB,G3676,SVM	1	
16	AA64-02725F	CABINET-FRONT,BOT;42W5,HIPS,V0,G4309,SVM	1	
17	AA64-02743A	BADGE-DECORATION;42W5,AL,NI,RS	1	
18	AA61-01128C	HOLDER-SIDE,A/V;42W5,ABS HB,G3676,SV-704	1	
19	AA64-02780C	DOOR-AV;42W5,ABS HB,G3676,SV-704P	1	
20	AA61-01132A	VELCRO-A;COMMANDO,BST1 1/4H	3	
21	AA61-01133A	VELCRO-B;COMMANDO,BST1 1/4H	3	
22	6003-001019	SCREW-TAPTITE;RH,+,B,M4,L12,ZPC(BLK),SWR	4	VC+CPC
23	AA64-02728A	CABINET-BACK,TOP;42W5,HIPS,HB,G4309	1	
24	6003-001026	SCREW-TAPTITE;RH,+,B,M4,L15,ZPC(BLK),SWR	11	CBT+CF
25	AA67-00204A	MIRROR-FRONT;42W5,FSM,870*633*446	1	
26	BP61-00012A	BRACKET-MIRROR;DP,42W5,AA61-01123A,11.8K	2	
27	6003-001026	SCREW-TAPTITE;RH,+,B,M4,L15,ZPC(BLK),SWR	4	BM+CBT
28	AA64-02729B	CABINET-BACK,BOT;42W5,HIPS,V0,G4309	1	
29	6005-001003	SCREW-WOOD;HH,+,M4,L19,ZPC(BLK),SWRCH18A	3	HC+CW
30	BP96-00077E	ASSY COVER P-TERMINAL,ANT;DP,42W5,HIPS,V	1	
31	6003-001026	SCREW-TAPTITE;RH,+,B,M4,L15,ZPC(BLK),SWR	4	TB+RJK
32	BP91-00286A	ASSY CHASSIS;HCM4216W3S/XAA,P55A	1	*
33	AA60-00072B	SPACER-COVER,DUST;43,54,62J9,SPONGE 94HF	1	
34	BP61-00011A	BRACKET-SCREEN,RL;DP,42W5,AA61-01122A,13	2	
35	BP61-00010A	BRACKET-SCREEN,TB;DP,42W5,AA61-01121A,26	2	
36	BP61-00011A	BRACKET-SCREEN,RL;DP,42W5,AA61-01122A,13	2	
37	BP61-00010A	BRACKET-SCREEN,TB;DP,42W5,AA61-01121A,26	2	
38	AA60-10011A	SCREW-TAPTITE;-;SWRCH18A,M4,L12,HH,+,PC,	20	BS+CF
39	BP64-00029A	INLAY-SUPPORT;42W5,PS SHEET,T0.5,94V0	1	
40	6005-001003	SCREW-WOOD;HH,+,M4,L19,ZPC(BLK),SWRCH18A	2	IS+CW
41	BP94-00155A	ASSY PCB MISC-CG-AMP;DP,HCM4215W3S/XAA,P	1	
42	BP94-00239A	ASSY PCB MISC-DY-JACK;DP,HCM4215W3S/XAA,	1	
43	AA26-00101A	TRANS FBT;FWZ50A001E/FFA97513B,12KV,5P,-	1	

6-4 ST42W5PCX/XAX

No	Code No	Description;Specification	Q'ty	Remark
1	AA64-02727K	CABINET-FRONT,MASK TOP;42W5,HIPS,HB,G430	1	
2	AA64-02724A	CABINET-WOOD;42W5,WOOD,SDE8336R	1	
3	AA67-00207A	SCREEN-FILTER;;T=82%,960*552*2,G=110,AG	1	
4	AA67-00193A	SCREEN-TINT;42W,958*550,T=0.73,P=052	1	
5	AA67-00193B	SCREEN-FRESNEL;42W,960*552,T=2.0	1	
6	AA64-02211E	BADGE-BRAND;72MM,AL FORGING,SVM1132,SAMS	1	
7	BP59-00005A	MODULE-FOCUS PACK ASS'Y;PJT TV,F301-P03A	1	
8	BP91-00423A	ASSY PRT;HCM4215WX/XAA,P55A,ASSY-PRT	1	*
9	AA64-02740A	KNOB-POWER;42W5,ABS,HB,G3676,COT	1	
10	AA61-60003J	SPRING-CS;-;SUS304;-;OD6,N7,OD6;-;-;	1	
11	AA64-02726A	CABINET-PANEL,CONTROL;42W5,HIPS,HB,G4309	1	
12	AA64-02742A	WINDOW-RMC,LED;42W5,PC,CLR	1	
13	AA64-02739A	KNOB-CONTROL;42W5,ABS,HB,G3676,COT	1	
14	6003-001019	SCREW-TAPTITE;RH,+,B,M4,L12,ZPC(BLK),SWR	4	KC+CPC
15	AA61-01130A	GUIDE-KNOB,CONTROL;42W5,ABS HB,G3676,SVM	1	GKC
16	AA64-02725B	CABINET-FRONT,BOT;42W5,HIPS,HB,G4309,SVM	1	
17	AA64-02743A	BADGE-DECORATION;42W5,AL,NI,RS	1	
18	AA61-01128C	HOLDER-SIDE,A/V;42W5,ABS HB,G3676,SV-704	1	
19	AA64-02780C	DOOR-AV;42W5,ABS HB,G3676,SV-704P	1	
20	AA61-01132A	VELCRO-A;COMMANDO,BST1 1/4H	3	
21	AA61-01133A	VELCRO-B;COMMANDO,BST1 1/4H	3	
22	6003-001019	SCREW-TAPTITE;RH,+,B,M4,L12,ZPC(BLK),SWR	4	VC+CPC
23	AA64-02728A	CABINET-BACK,TOP;42W5,HIPS,HB,G4309	1	CBT
24	6003-001026	SCREW-TAPTITE;RH,+,B,M4,L15,ZPC(BLK),SWR	11	CBT+CF
25	AA67-00204A	MIRROR-FRONT;42W5,FSM,870*633*446	1	
26	AA61-01123A	BRACKET-MIRROR;42W5,SECC,T1.0	1	
27	6003-001026	SCREW-TAPTITE;RH,+,B,M4,L15,ZPC(BLK),SWR	4	BM+CBT
28	AA64-02729C	CABINET-BACK,BOT;42W5,HIPS,HB,G4309	1	
29	6005-001003	SCREW-WOOD;HH,+,M4,L19,ZPC(BLK),SWRCH18A	3	HC+CW
30	BP96-00038A	ASSY COVER P-TERMINAL,ANT;42W5,HIPS VO,B	1	
31	6003-001026	SCREW-TAPTITE;RH,+,B,M4,L15,ZPC(BLK),SWR	4	TB+RJK
32	BP91-00373A	ASSY CHASSIS;ST42W5PCX/XAX,P55A	1	*
33	AA60-00072B	SPACER-COVER,DUST;43,54,62J9,SPONGE 94HF	1	
34	AA61-01122A	BRACKET-SCREEN,RL;42W5,SECC,T1.0	1	
35	AA61-01121A	BRACKET-SCREEN,TB;42W5,SECC,T1.0	1	
36	AA61-01122A	BRACKET-SCREEN,RL;42W5,SECC,T1.0	1	
37	AA61-01121A	BRACKET-SCREEN,TB;42W5,SECC,T1.0	1	
38	AA60-10011A	SCREW-TAPTITE;-;SWRCH18A,M4,L12,HH,+,PC,	20	BS+CF
39	BP64-00029A	INLAY-SUPPORT;42W5,PS SHEET,T0.5,94V0	1	
40	6005-001003	SCREW-WOOD;HH,+,M4,L19,ZPC(BLK),SWRCH18A	2	IS+CW
41	AA95-02002A	ASSY SUB-PCB,CG AMP;COMMANDO	1	
42	AA94-08270A	ASSY PCB MISC-DY JACK;COMMANDO	1	
43	AA26-00101A	TRANS FBT;FWZ50A001E/FFA97513B,12KV,5P,-	1	