

\* NOTES:

1. DC voltages were measured from points indicated to the circuit ground with a high-Z voltmeter.
2. Waveforms were taken using a standard color bar signal.
3. TP13, etc. show Test Points.
4. CAPACITORS

Value	Not indicated	PF, for numbers more than 1 μF, for numbers less than 1
Dielectric Strength	Not indicated	±50V
Tolerance	Not indicated = ±10%	No tolerance is indicated for electrolytic capacitors and ±20%
Type	I except for chips	Not indicated :Ceramic capacitor :Polyester capacitor :Polypropylene film capacitor :Aluminum electrolytic capacitor :Twin film capacitor :Semiconductor Ceramic capacitor :Metalized paper :Metalized plastic film capacitor :Metalized polyester capacitor :Polyester polypropylene film capacitor :Styrol capacitor :Tantalum capacitor :Electrolytic capacitor :Non polarized electrolytic capacitor
Characteristic (only ceramic capacitor)	Not indicated CH, SL, etc.	:F or B (high dielectric percentage) :Temperature compensating types

#### 5. RESISTORS

Value	Not indicated = Ohm K = 1,000 Ohm M = 1,000,000 Ohm		
Wattage	Parts except for chips	Not indicated = 1/4W or 1/6W	
	Chips	Not indicated = 1/10W	
Tolerance	Not indicated D = ±0.5% F = ±1%	= ±5% J = ±5% K = ±10%	
Type	I Parts except for chips	Not indicated (S) (MB) (CE) (W) (M) (MPC) (ML)	:Carbon resistor :Fixed composition resistor :Metal oxide film resistor (type B) :Cemented resistor :Wire wound resistor :Metal film resistor :Metal plate cement resistor :Metal liner resistor
	II Chip	Not indicated	:Chip resistor

6. This is a basic schematic diagram. Some sets may be subject to modification according to engineering improvement.

SHADED COMPONENTS HAVE SPECIAL CHARACTERISTICS IMPORTANT TO SAFETY. BEFORE REPLACING ANY OF THESE COMPONENTS, CAREFULLY READ THE PRODUCT SAFETY NOTICE IN THE SERVICE MANUAL. DO NOT DEGRADE THE SAFETY OF THE PRODUCT THROUGH IMPROPER SERVICING.

#### SERVICE TECHNICIAN WARNING:

##### X-RADIATION PRECAUTION

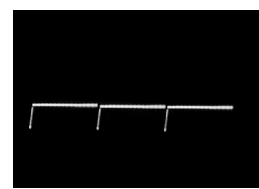
THIS PRODUCT INCLUDES CRITICAL ELECTRICAL AND MECHANICAL PARTS ESSENTIAL FOR X-RADIATION PROTECTION.

TO AVOID POSSIBLE EXPOSURE TO X-RADIATION, TAKE X-RADIATION PROTECTIVE MEASURES FOR PERSONNEL DURING SERVICING.

SEE SERVICE INSTRUCTIONS FOR SPECIFIED REPLACEMENT PARTS AND SERVICE ADJUSTMENTS.

CONTENTS  
PG.1... BLOCK DIAGRAM  
PG.2... MAIN  
PG.3... SIGNAL-1 (MICRO)  
PG.4... SIGNAL-2 (AV/IO)  
PG.5... SIGNAL-3 (VCJ/PIP)  
PG.6... SIGNAL-4 (CRT DRIVE/APERTURE)  
PG.7... SIGNAL-5 (CONV)  
PG.8... CRT / CONTROL / TERMINAL / PREAMP / DBF

VS-45609  
VS-50609  
VS-55609  
VS-60609  
VS-60719  
VS-70709



VS-45609  
VS-50609  
VS-55609  
VS-60609  
VS-60719  
VS-70709

A

B

C

D

E

F

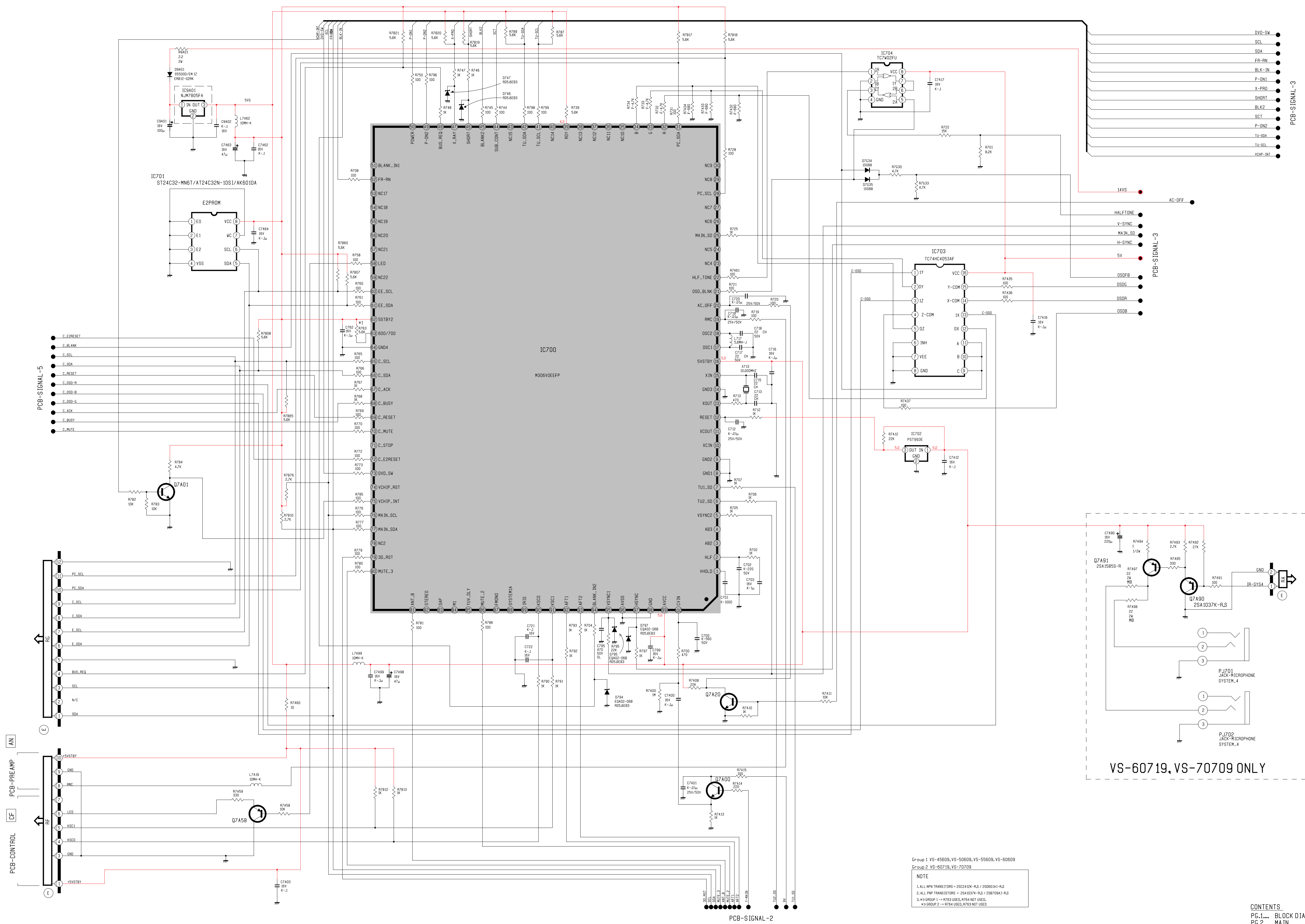
G

H

I

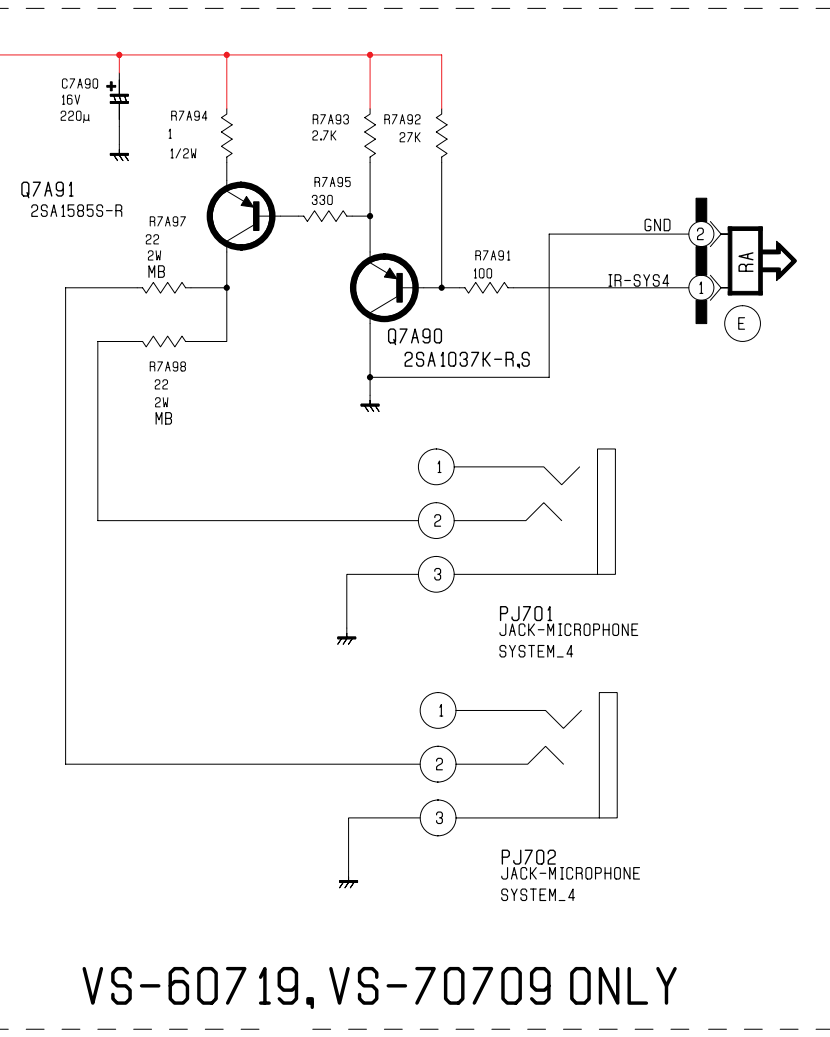
J

K



- PCB-SIGNAL-3
- DVD-SW
  - SCL
  - SDA
  - FR-RN
  - BLK-IN
  - P-DN1
  - X-PRO
  - SHORT
  - BLK2
  - SC1
  - P-DN2
  - TU-SDA
  - TU-SCL
  - VDP-INT

- PCB-SIGNAL-3
- HALF-TONE
  - V-SYNC
  - MAIN-SD
  - H-SYNC
  - 5V
  - OSDFB
  - OSDG
  - OSDR
  - OSDB



Group 1 VS-45609, VS-50609, VS-55609, VS-60609  
Group 2 VS-60719, VS-70709

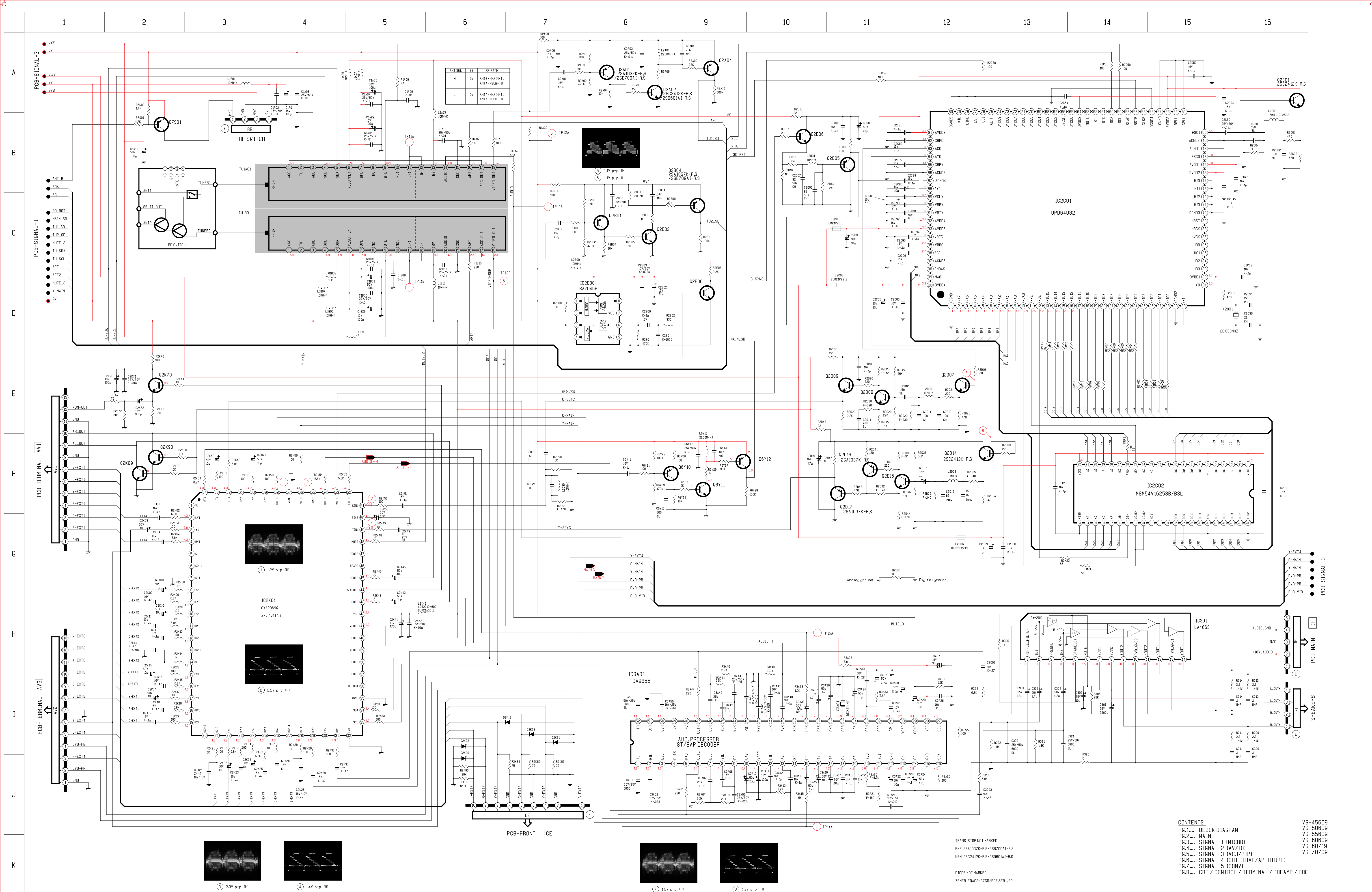
NOTE

1. ALL NPN TRANSISTORS = 2SC2412K-R/S / 2SC601A1-R/S  
2. ALL PNP TRANSISTORS = 2SA1037K-R/S / 2SB709A1-R/S  
3. \*1 GROUP 1 -> R793 USED, R704 NOT USED.  
\*2 GROUP 2 -> R794 USED, R793 NOT USED.

CONTENTS

PG.1...	BLOCK DIAGRAM	VS-45609
PG.2...	MAIN	VS-50609
PG.3...	SIGNAL-1 (MICRO)	VS-55609
PG.4...	SIGNAL-2 (AV/IO)	VS-60609
PG.5...	SIGNAL-3 (VCJ/P/IP)	VS-60719
PG.6...	SIGNAL-4 (CRT DRIVE/APERTURE)	VS-70709
PG.7...	SIGNAL-5 (CONV)	
PG.8...	CRT / CONTROL / TERMINAL / PREAMP / DBF	









A

B

C

D

E

F

G

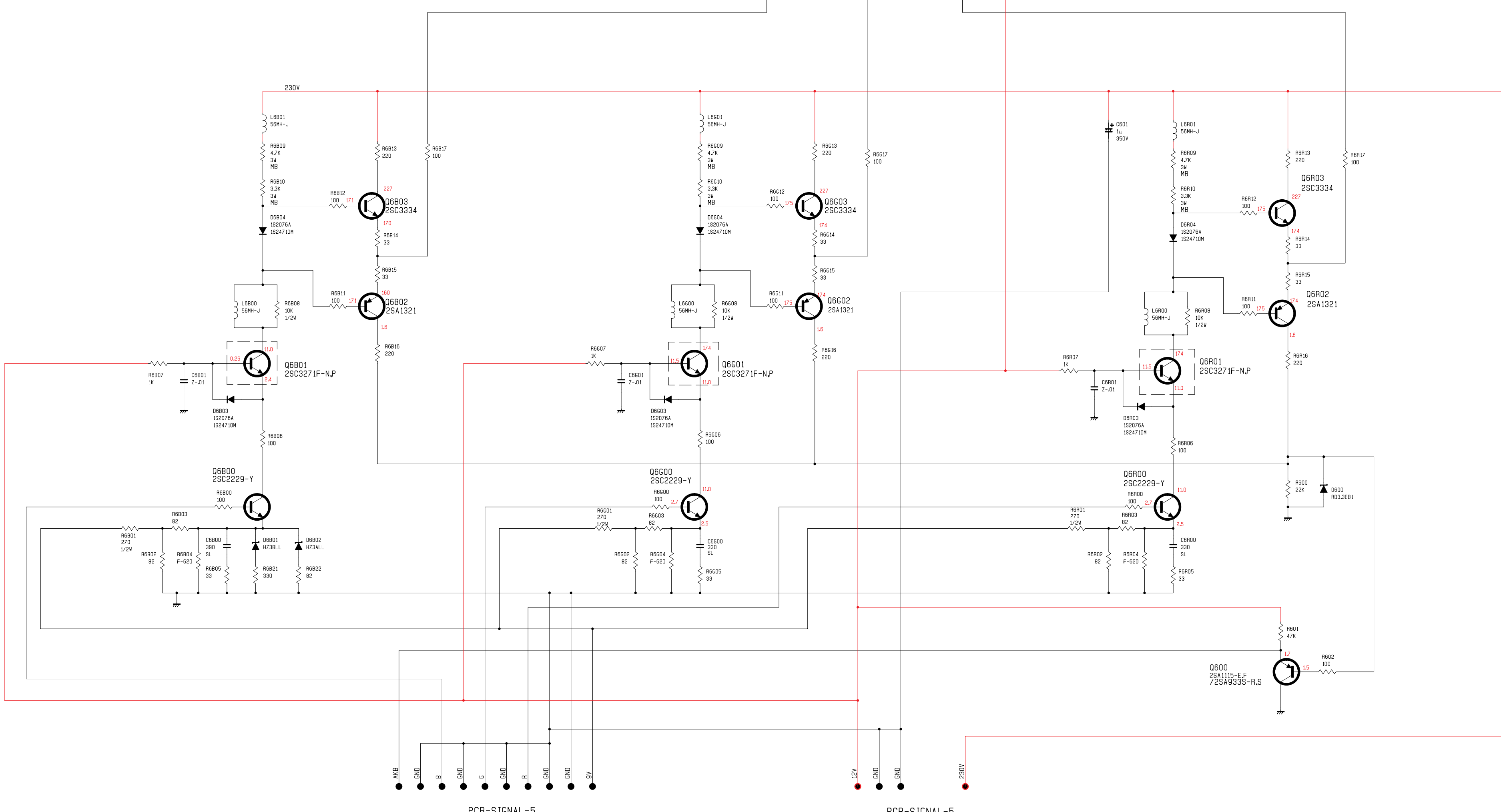
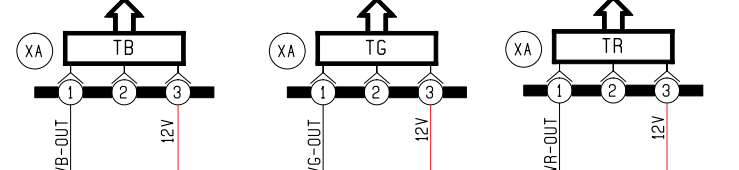
H

I

J

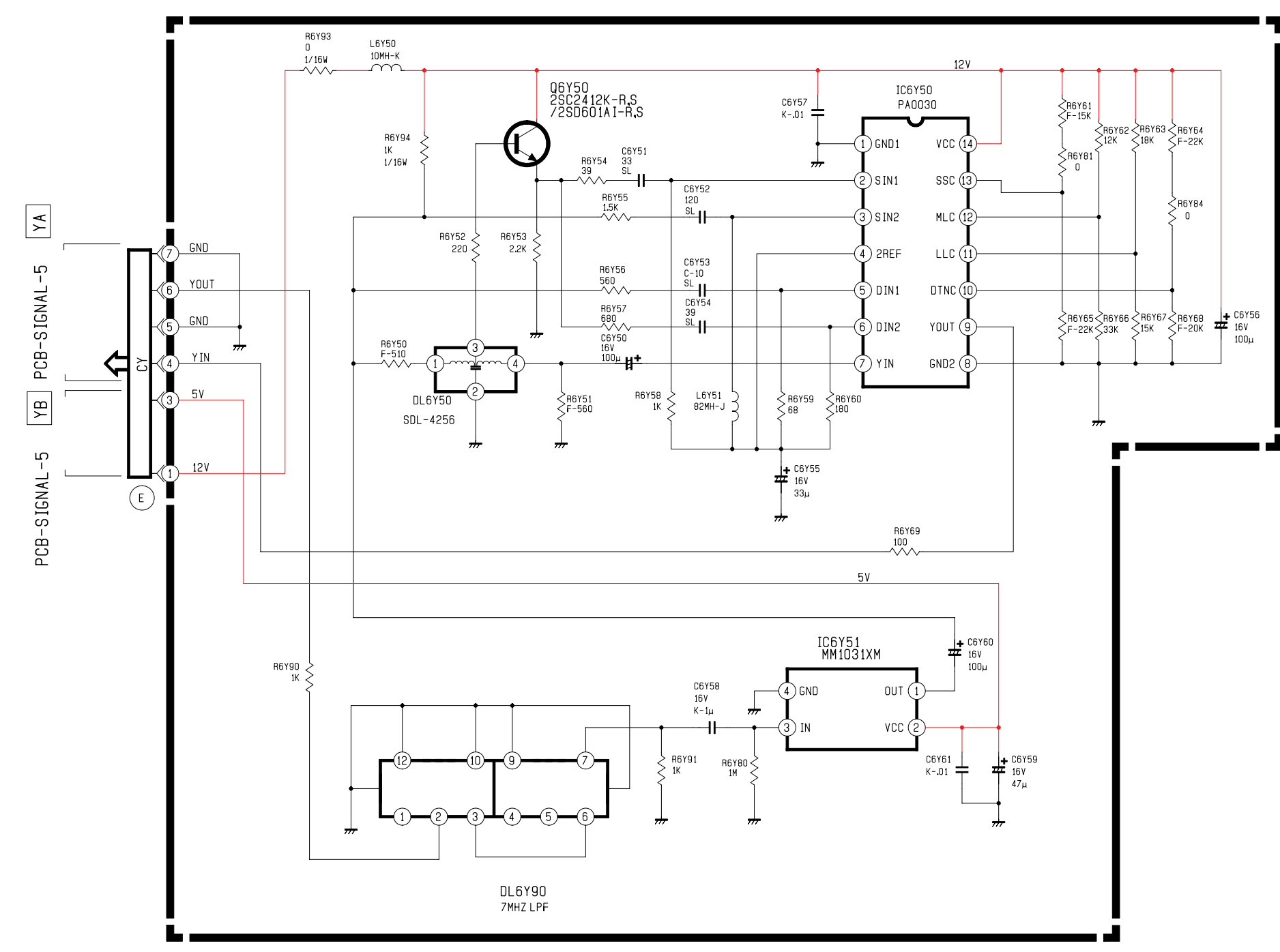
K

PCB-CRT (B) SB PCB-CRT (G) SG PCB-CRT (R) SR



PCB-SIGNAL-5

PCB-SIGNAL-5



CONTENTS		VS-45609
PG.1...	BLOCK DIAGRAM	VS-50609
PG.2...	MAIN	VS-55609
PG.3...	SIGNAL-1 (MICRO)	VS-60609
PG.4...	SIGNAL-2 (AV/I/O)	VS-60719
PG.5...	SIGNAL-3 (VCI/P/IP)	VS-70709
PG.6...	SIGNAL-4 (CRT DRIVE/APERTURE)	
PG.7...	SIGNAL-5 (CONV)	
PG.8...	CRT / CONTROL / TERMINAL / PREAMP / DBF	





