

RUN CHANGES

RUN 10 NEW CHASSIS START PRODUCTION

WARNINGS

USE ISOLATION TRANSFORMER WHEN SERVICING CHASSIS.
WHEN SERVICING, USE EXACT REPLACEMENT PARTS (SEE "SAFETY CRITICAL COMPONENTS" NOTICE). ALSO PERFORM ALL SAFETY CHECKS

VOLTAGE & WAVEFORM INFORMATION

DC VOLTAGES ARE MEASURED WITH RESPECT TO COMMON GROUND (B-) USING A VTVM, LINE VOLTAGE SET AT 120VAC AND ALL CONTROLS SET FOR NORMAL PICTURE. VOLTAGE READINGS TAKEN WITH SIGNAL.

SCHEMATIC NOTES

(UNLESS OTHERWISE INDICATED)

RESISTOR VALUES IN OHMS, $\pm 5\%$, 1/4W.
CAPACITOR VALUES 1 OR HIGHER IN PF, LESS THAN 1 IN UF, $\pm 20\%$, 50V
COIL RESISTANCE VALUES LESS THAN 1 OHM, NOT SHOWN.
⊖ COMMON GROUND (B-)
Ⓜ RUN NUMBER INDICATES CHANGE(S) INCORPORATED AS GIVEN UNDER THAT RUN NUMBER, AS WELL AS ALL LOWER RUN CHANGES.
ⓂF SYMBOL INDICATES MYLAR CAPACITOR.

SEMICONDUCTOR CAUTIONS

TO AVOID DAMAGE TO SEMICONDUCTOR DEVICES DO NOT ARC 2ND ANODE LEAD OR PICTURE TUBE ANODE TO GROUND. DISCHARGE ONLY TO PICTURE TUBE DAG OR DAG GROUND. DO NOT TURN SET ON WITH TRANSISTOR (S) REMOVED, OR PICTURE TUBE OR OTHER LEADS REMOVED OR UNSOLDERED. USE CAUTION TO PREVENT ACCIDENTAL SHORTS BETWEEN COMPONENT LEADS OR TO CHASSIS GROUND. MAKE CONTINUITY AND RESISTANCE MEASUREMENTS WITH VTVM, FIELD EFFECT METER, OR OTHER HIGH INPUT IMPEDANCE METER. DO NOT USE A VOLT-OHMMMETER HAVING LESS THAN 100K OHMS/VOLT FOR RESISTANCE MEASUREMENTS.

SAFETY CRITICAL PARTS LIST

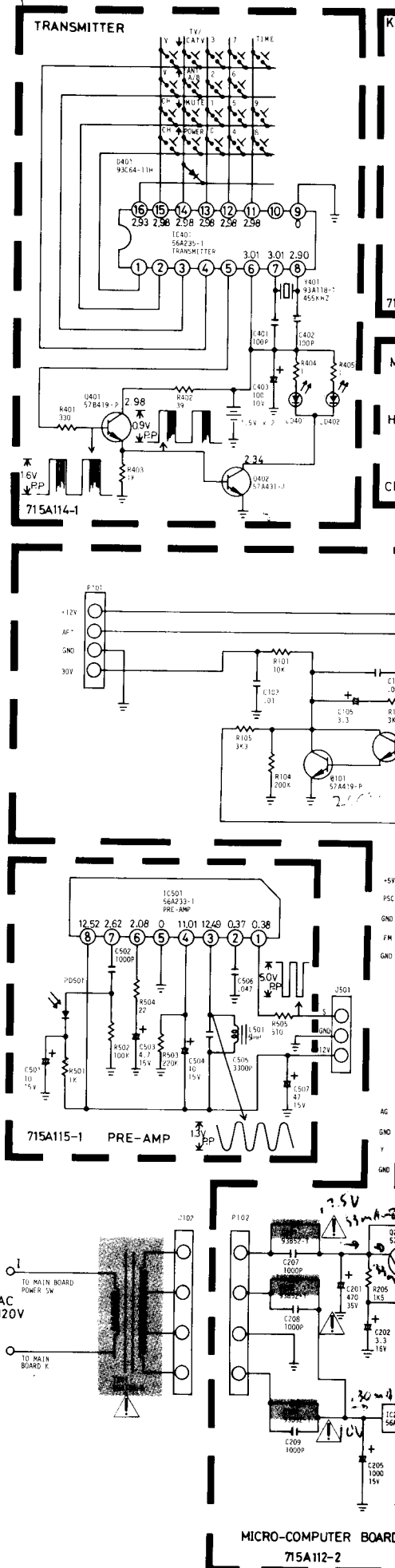
REF. NO.	PART NO.
C1100	63D34-1
C1101	63D34-1
D201	93B52-1
D202	93B52-1
D203	93B52-1
T201	80A134-4
RY101	77A260-2
ANT. SHIELD BOX	750A1823-1

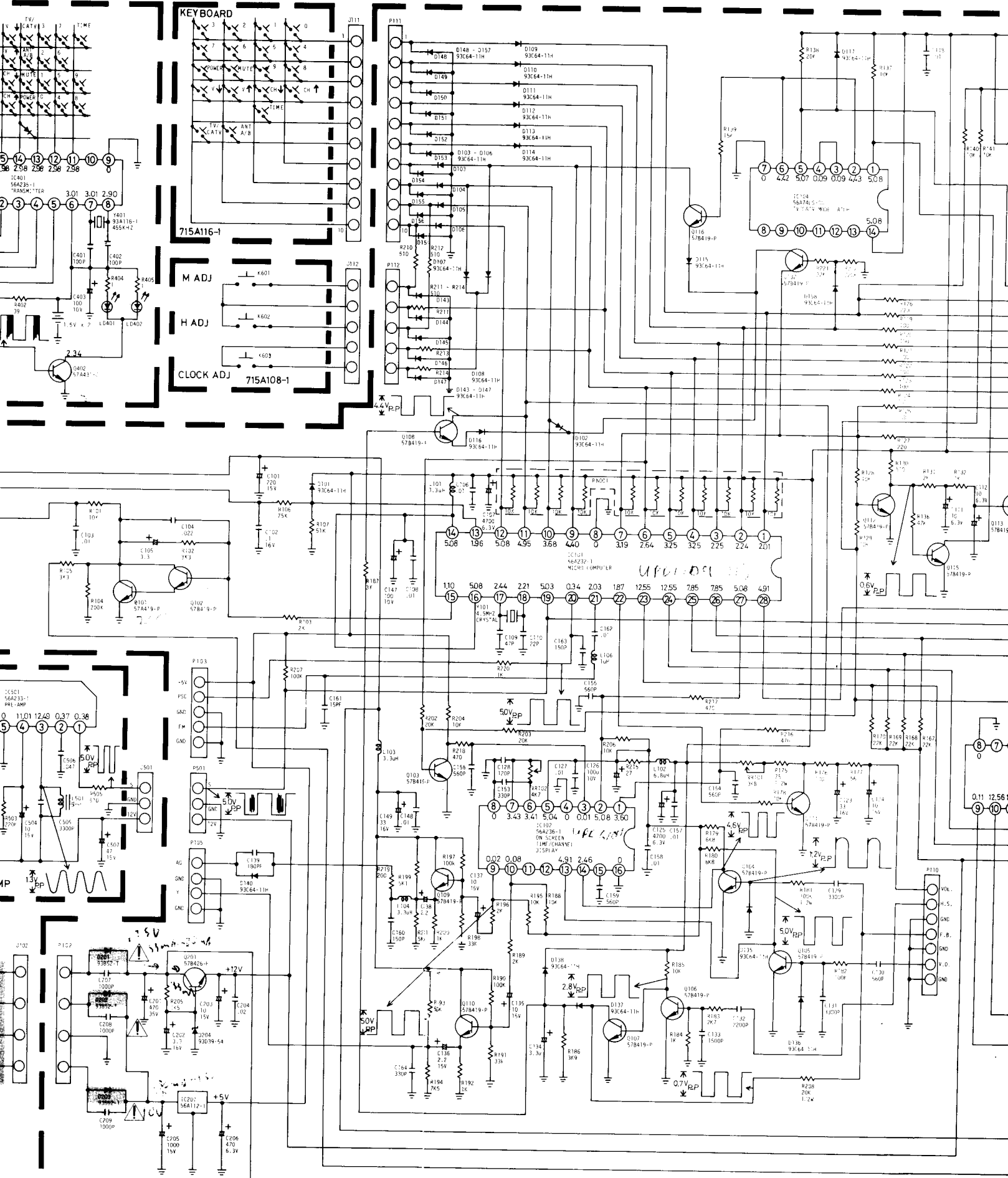
SAFETY CRITICAL COMPONENTS

THE DESIGN OF THIS RECEIVER CONTAINS MANY CIRCUITS AND COMPONENTS INCLUDED SPECIFICALLY FOR SAFETY PURPOSES. FOR CONTINUED PROTECTION, NO CHANGES SHOULD BE MADE TO THE ORIGINAL DESIGN AND COMPONENTS SHOWN IN SHADED AREAS ON THE SCHEMATIC SHOULD BE REPLACED WITH EXACT FACTORY REPLACEMENT PARTS. THE USE OF UNAUTHORIZED SUBSTITUTE PARTS MAY CREATE A SHOCK, FIRE, X-RADIATION, OR OTHER HAZARD. SERVICE SHOULD BE PERFORMED BY QUALIFIED PERSONNEL ONLY.

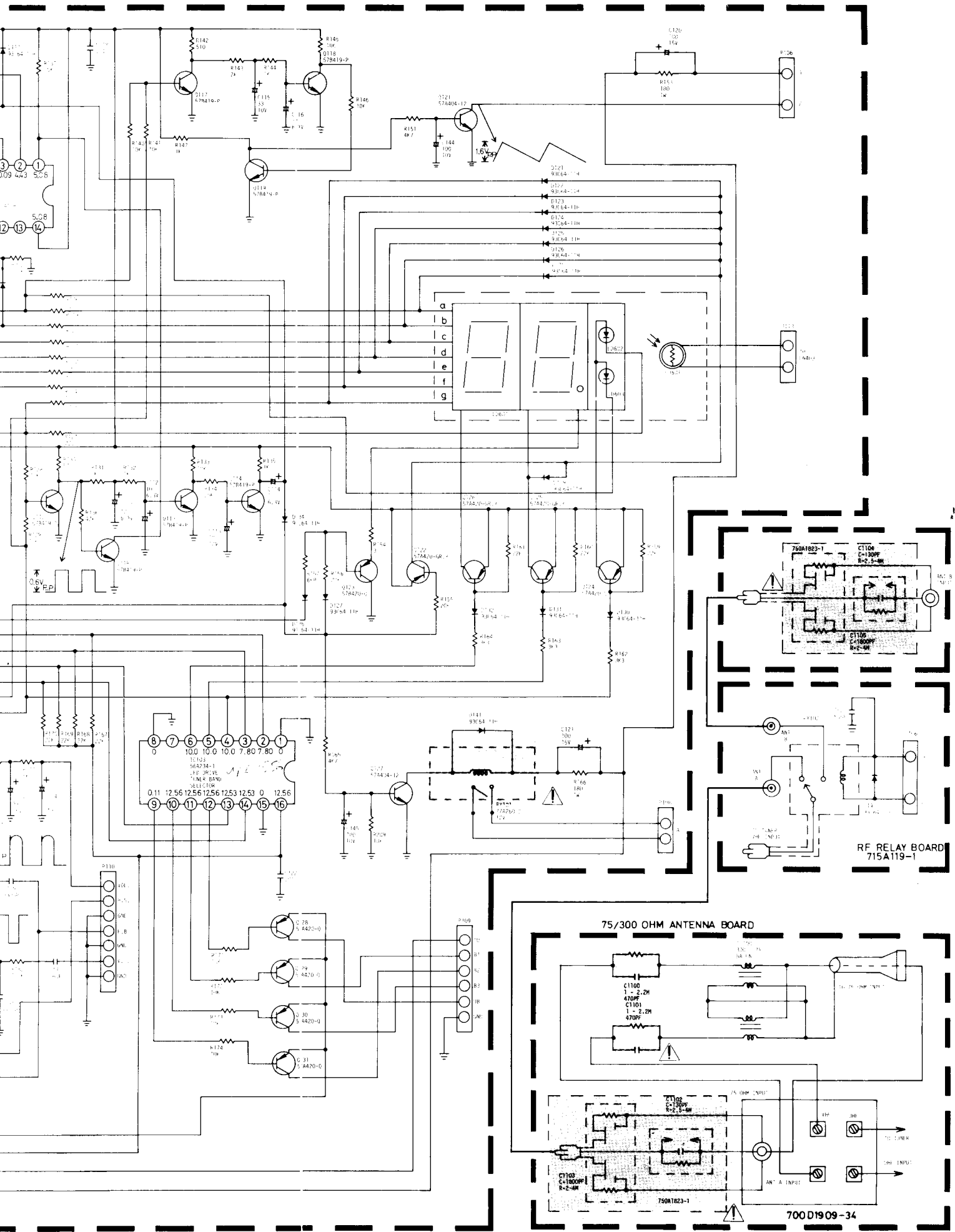
RELIABILITY AND PERFORMANCE

FOR CONTINUED RELIABILITY AND PERFORMANCE, EXACT FACTORY REPLACEMENTS ARE RECOMMENDED FOR ALL OTHER PARTS REPLACED. IF A SUBSTITUTE MUST BE USED, BE SURE ITS QUALITY AND SPECIFICATIONS ARE IDENTICAL TO THE ORIGINAL PART.

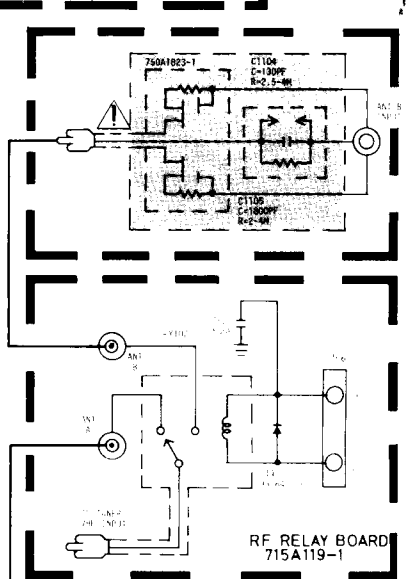
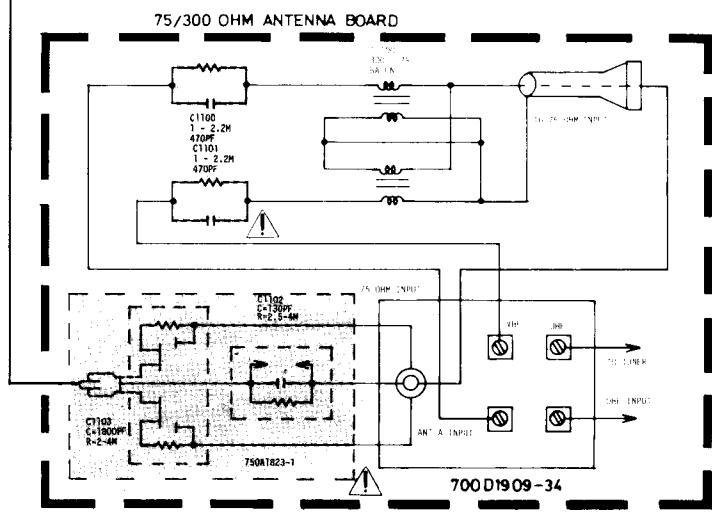




MICRO-COMPUTER BOARD
715A112-2



8	7	6	5	4	3	2	1
10.0	10.0	10.0	10.0	7.80	7.80	0	
0.11	12.56	12.56	12.56	12.53	12.53	0	12.56
9	10	11	12	13	14	15	16



RUN CHANGES

RUN 10 NEW CHASSIS START PRODUCTION

WARNINGS

USE ISOLATION TRANSFORMER WHEN SERVICING CHASSIS.
WHEN SERVICING, USE EXACT REPLACEMENT PARTS (SEE "SAFETY CRITICAL COMPONENTS" NOTICE). ALSO PERFORM ALL SAFETY CHECKS

VOLTAGE & WAVEFORM INFORMATION

DC VOLTAGES ARE MEASURED WITH RESPECT TO COMMON GROUND (B-) USING A VTVM, LINE VOLTAGE SET AT 120VAC AND ALL CONTROLS SET FOR NORMAL PICTURE. VOLTAGE READINGS TAKEN WITH SIGNAL.

SCHEMATIC NOTES

(UNLESS OTHERWISE INDICATED)
RESISTOR VALUES IN OHMS, 1/5%, 1/4W.
CAPACITOR VALUES 1 OR HIGHER IN PF, LESS THAN 1 IN UF, ± 20%, 50V.
COIL RESISTANCE VALUES LESS THAN 1 OHM, NOT SHOWN.
⊕ COMMON GROUND (B-)
① RUN NUMBER INDICATES CHANGE(S) INCORPORATED AS GIVEN UNDER THAT RUN NUMBER, AS WELL AS ALL LOWER RUN CHANGES.
Ⓜ SYMBOL INDICATES MYLAR CAPACITOR.

SEMICONDUCTOR CAUTIONS

TO AVOID DAMAGE TO SEMICONDUCTOR DEVICES DO NOT ARC 2ND ANODE LEAD OR PICTURE TUBE ANODE TO GROUND. DISCHARGE ONLY TO PICTURE TUBE DAG OR DAG GROUND. DO NOT TURN SET ON WITH TRANSISTOR (S) REMOVED, OR PICTURE TUBE OR OTHER LEADS REMOVED OR UNSOLDERED. USE CAUTION TO PREVENT ACCIDENTAL SHORTS BETWEEN COMPONENT LEADS OR TO CHASSIS GROUND. MAKE CONTINUITY AND RESISTANCE MEASUREMENTS WITH VTVM, FIELD EFFECT METER, OR OTHER HIGH INPUT IMPEDANCE METER. DO NOT USE A VOLT-OHM METER HAVING LESS THAN 100K OHMS/VOLT FOR RESISTANCE MEASUREMENTS.

NOTE

FOR 1800 79A307-1 PAIR WITH	FOR 1800 79A307-2 PAIR WITH	FOR 1800 79A307-3 PAIR WITH
1. LB01 33uH	1. LB01 100uH	1. LB01 SHORT
2. CB18 .012 200V	2. CB18 SHORT	2. CB18 OPEN
3. RB09 6K8 1/4W 2	3. RB09 5K1 1/4W 2	3. RB09 6K2 1/4W 2
4. RB10 3K 1/4W	4. RB10 3K9 1/4W	4. RB10 3K3 1/4W
5. RB11 510 1/4W 2	5. RB11 510 1/4W 2	5. RB11 SHORT
6. RB12 15 1/2W	6. RB12 100 1/2W	6. RB12 OPEN
7. RB26 0.2 2W	7. RB26 1.8 2W	7. RB26 1 2W
8. RB25 2K2 1/2W	8. RB25 820 1/2W	8. RB25 2K2 1/2W

FOR CRT 19498R22
1. LB01 33uH
2. LB01 56uH

FOR CRT 19498R22
1. LB01 33uH
2. LB01 56uH

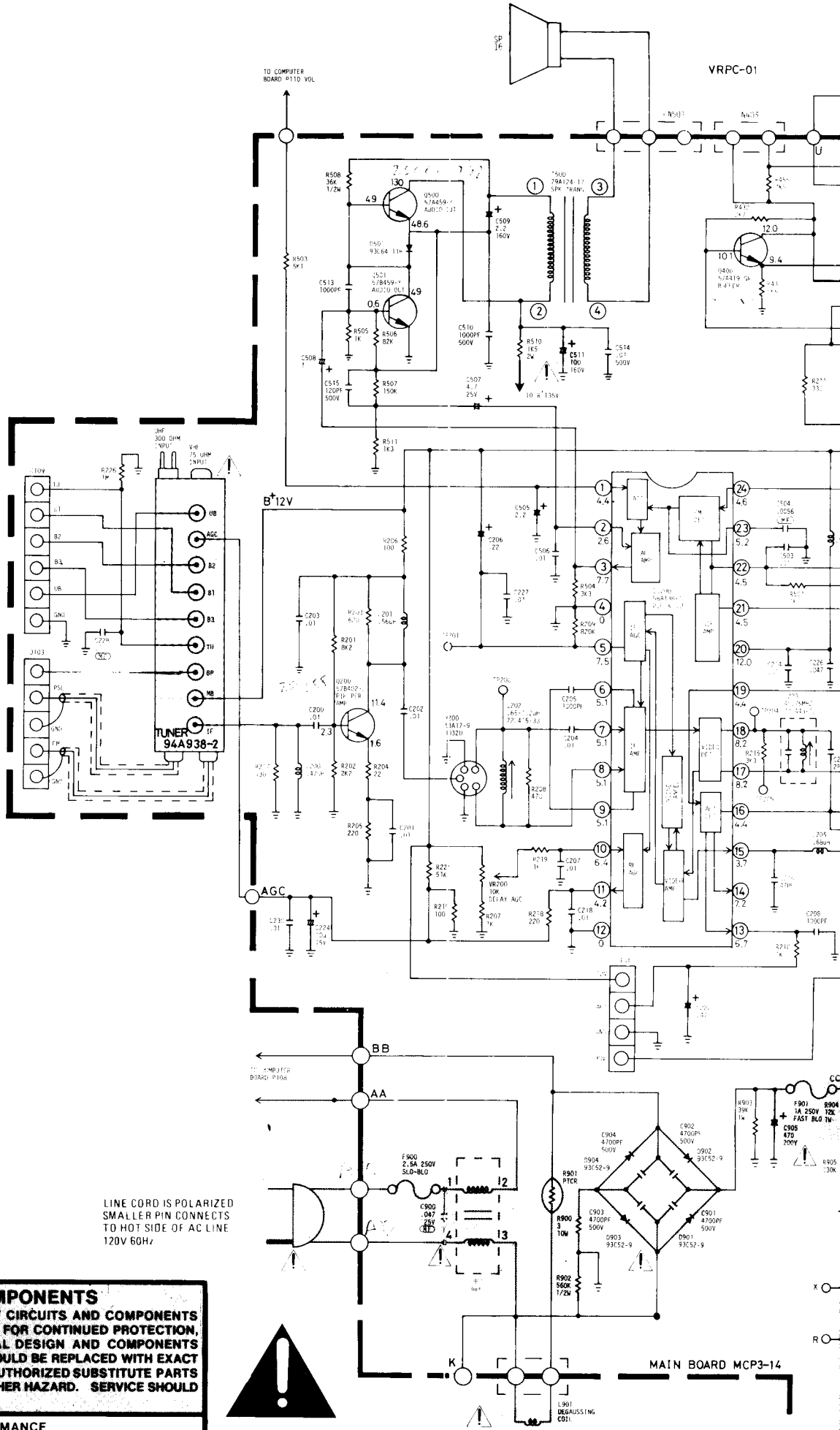
LINE CORD IS POLARIZED
SMALLER PIN CONNECTS TO
HOT SIDE OF AC LINE
120V 60Hz

SAFETY CRITICAL COMPONENTS

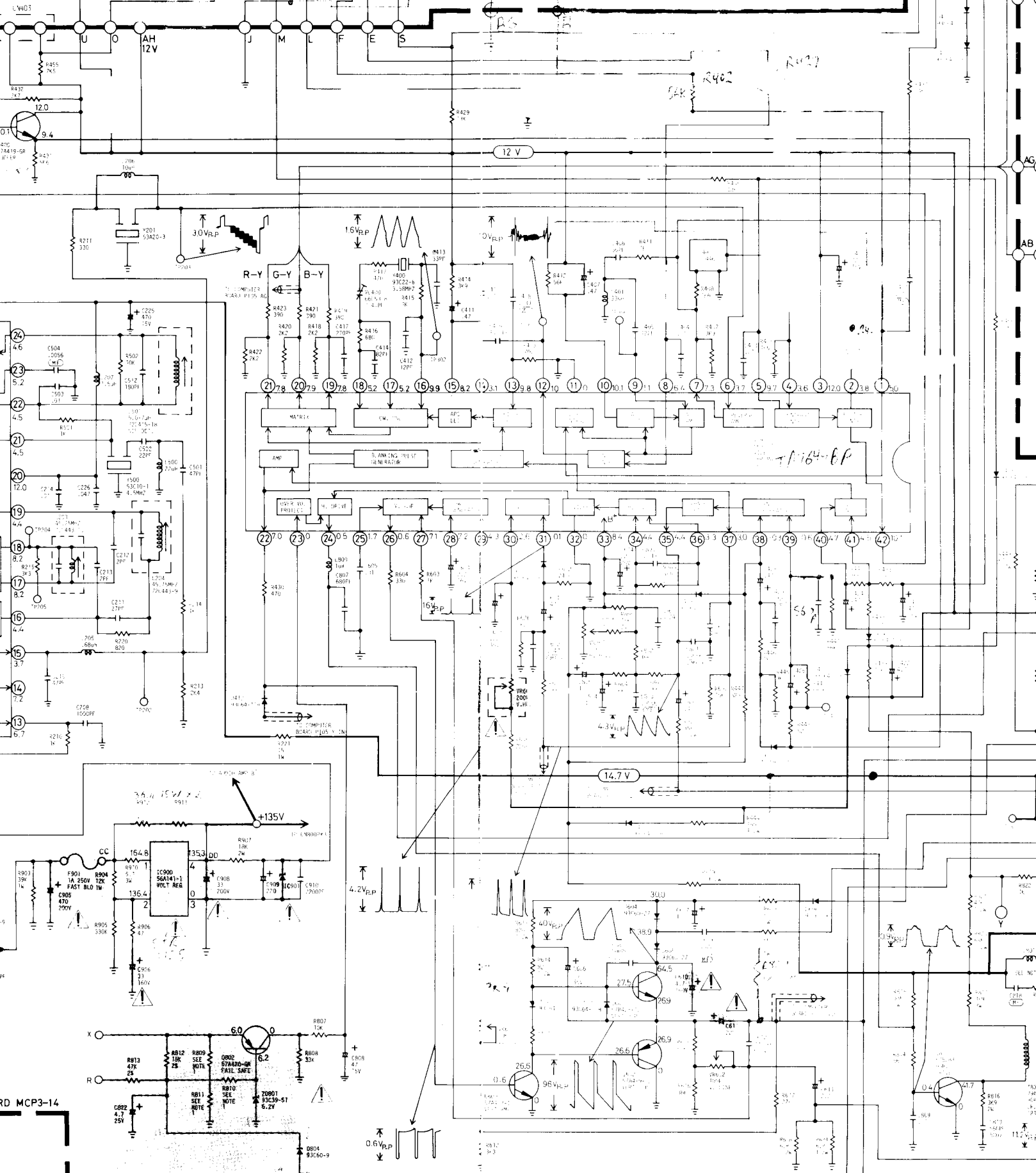
THE DESIGN OF THIS RECEIVER CONTAINS MANY CIRCUITS AND COMPONENTS INCLUDED SPECIFICALLY FOR SAFETY PURPOSES. FOR CONTINUED PROTECTION, NO CHANGES SHOULD BE MADE TO THE ORIGINAL DESIGN AND COMPONENTS SHOWN IN SHADED AREAS ON THE SCHEMATIC SHOULD BE REPLACED WITH EXACT FACTORY REPLACEMENT PARTS. THE USE OF UNAUTHORIZED SUBSTITUTE PARTS MAY CREATE A SHOCK, FIRE, X-RADIATION, OR OTHER HAZARD. SERVICE SHOULD BE PERFORMED BY QUALIFIED PERSONNEL ONLY.

RELIABILITY AND PERFORMANCE

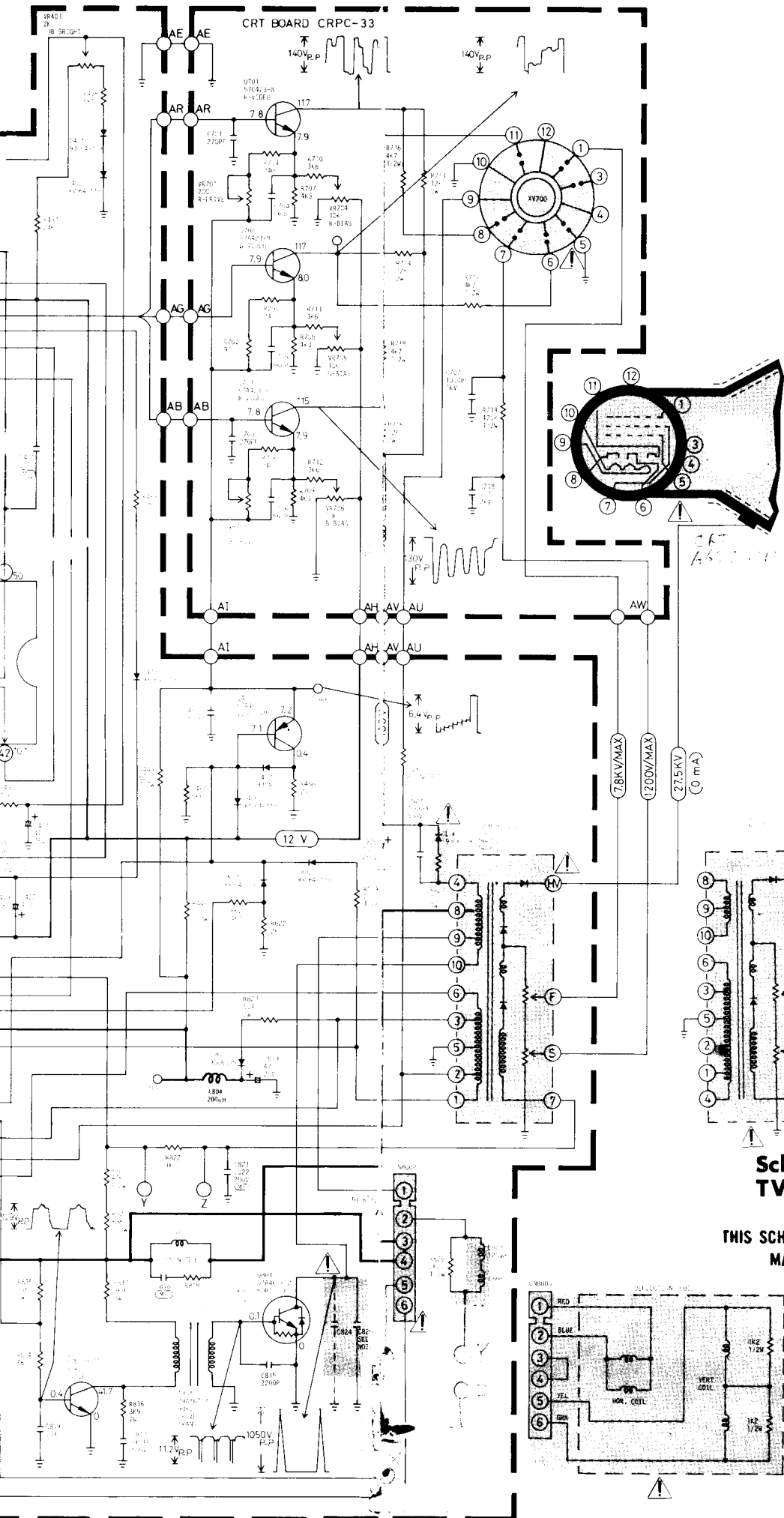
FOR CONTINUED RELIABILITY AND PERFORMANCE, EXACT FACTORY REPLACEMENTS ARE RECOMMENDED FOR ALL OTHER PARTS REPLACED. IF A SUBSTITUTE MUST BE USED, BE SURE ITS QUALITY AND SPECIFICATIONS ARE IDENTICAL TO THE ORIGINAL PART.



IPC-01



RD MCP3-14



SAFETY CRITICAL PARTS LIST

REF. NO.	PART NO.
C511	67S201-101-10M
C610	67S201-479-10
C611	67S201-221-7M
C825	64A103-9
C816	67S201-330-10M
C817	63S103-4
C822	67S201-479-7
C900	63A107-1
C905	67D30-38
C906	67S201-330-10M
C908	67D90-20
R808	61S172-333-57
R809	67S171-682-57
R810	61S172-302-57
R811	61S171-511-57
R812	61S171-153-57
R813	67S171-473-57
R827	61S208-100
R900	61D20-189
R901	61S52-7
R902	61S175-564
R910	61S153-519
R911	61D20-195
R912	61D20-195
VR404	75D308-5
VR405	75D308-3
VR406	75D308-3
VR407	75D308-3
VR600	75D308-4A
L900	73C140-4
L901	700D1697-51
L803	73C147-7
T800	79A307-1
T800	79A307-2 ALT
T800	79A307-3 ALT
F900	84C7-35
F901	84B4-6
D803	93C60-26
D804	93C60-9
D901	93C52-9
D902	93C52-9
D903	93C52-9
D904	93C52-9
ZD801	93C39-79
IC900	56A141-1
IC901	56A113-1
CN800P	33T3074-5
XV700	87A301-1
CRT	750A3700-2
CRT	750A4100-2 ALT
AC CORD	89S168-11
MAIN POWER SW.	77A267-1
TUNER	94A938-2

Schematic for M9C 2 Color TV Chassis Random Access Tuning Series

THIS SCHEMATIC MAY NOT INCLUDE CIRCUIT REFINEMENTS MADE DURING THE COURSE OF PRODUCTION.

