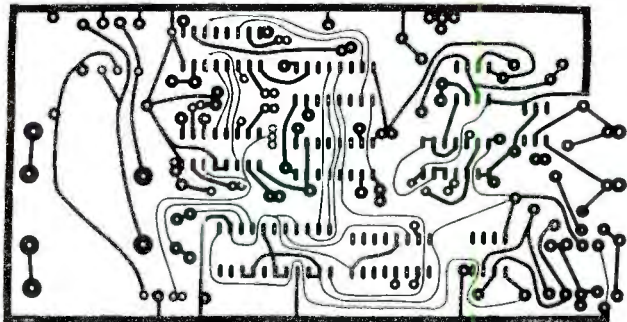


## Cleaner Copy

- The etching-and-drilling guide for the main pc board in Part 2 of the “Dual-Application Telephone Security System” that ap-



peared in the July 1990 issue of *Modern Electronics* appears to have a few short circuits between closely-spaced traces. Any chance of getting a ‘clean’ copy?

J.A. Furstman  
Brooklyn, NY

*The original pc guide appears to have suffered from “ink bleed” during printing. Here it is cleaned up but shown at 75% actual size. You can easily clean up the original by working from this copy. Alternatively, you can have this blown up to actual size for direct use. Also note that the trace that originates at the pin 12 pad for IC7 and passes between the pads for pins 11 and 12 for IC6 and terminates at the pin 21 pad of IC2 should also be connected to the pin-12 pad for IC6.—Ed.*