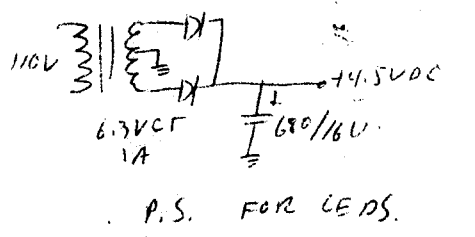
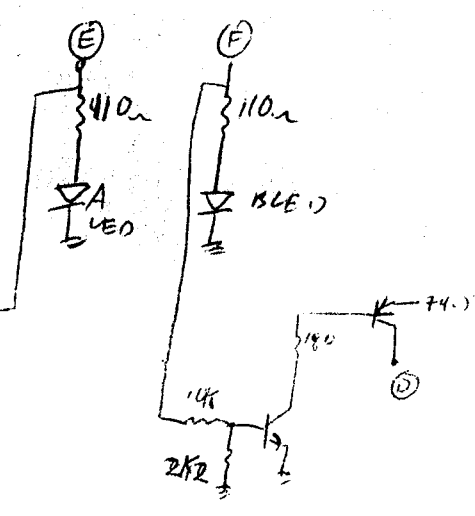
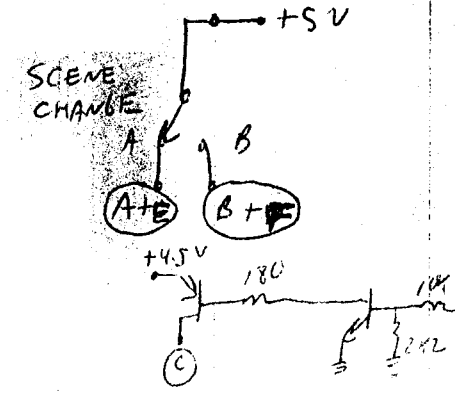
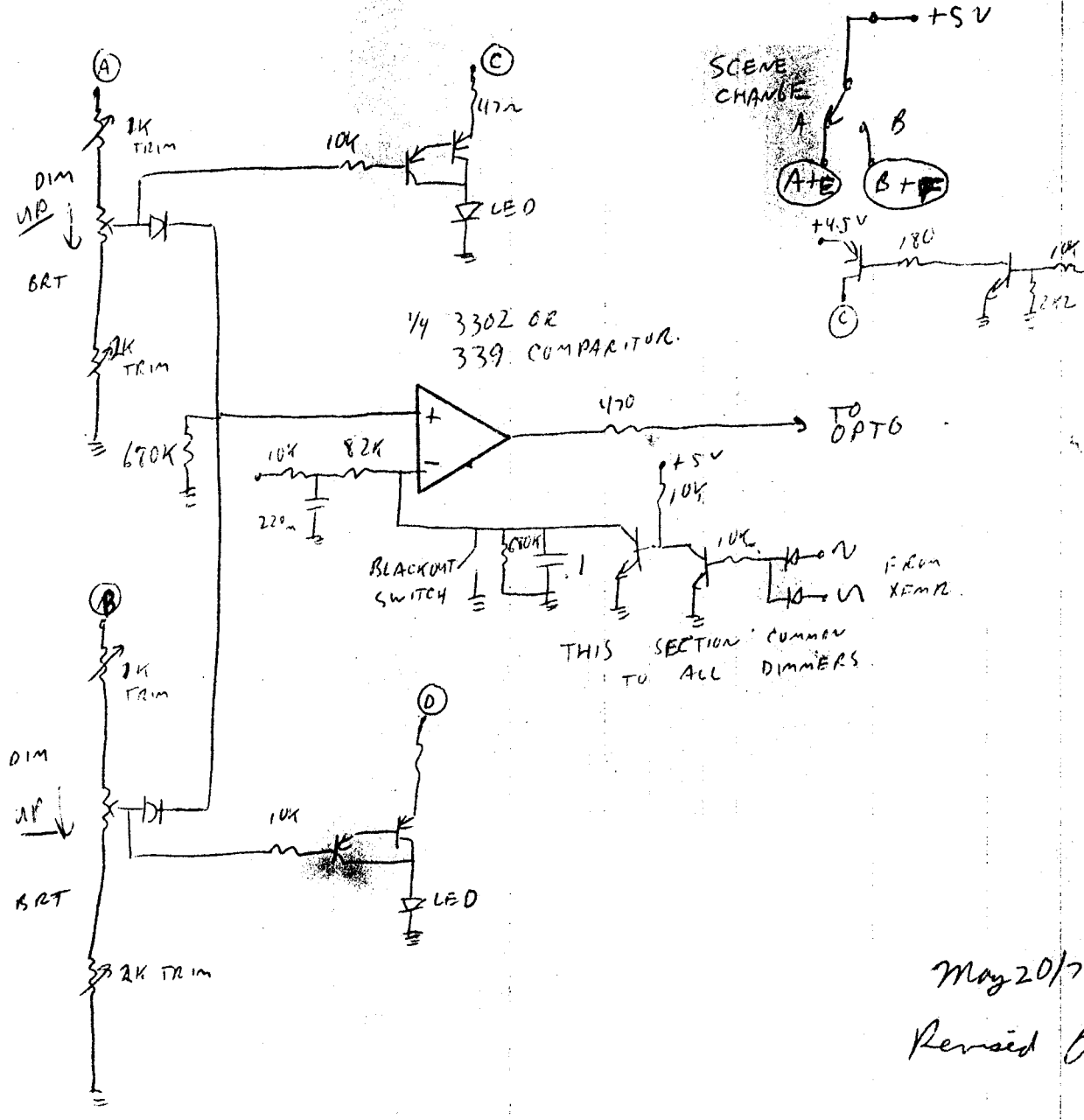


AWK TRIACS  
 HUTSON SIPT 325  
 GE SC 608 card.



# FRASER ELECTRONICS

P.O. BOX 778 - EDMONTON, ALBERTA T5J 2L4 · (403) 454-5412

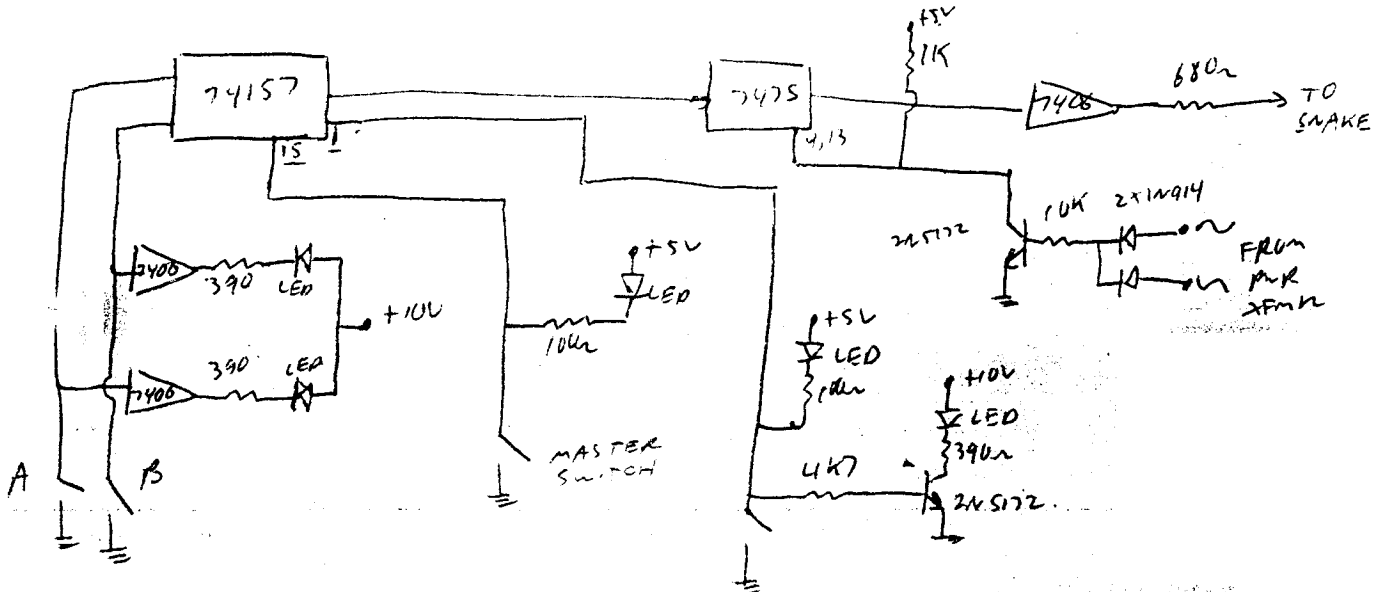


May 20/79  
 Revised June 7/1981  
 R5 Dimmer Board.  
 D. Fruse

# FRASER ELECTRONICS

P.O. BOX 778 · EDMONTON, ALBERTA T5J 2L4 · (403) 428-9655

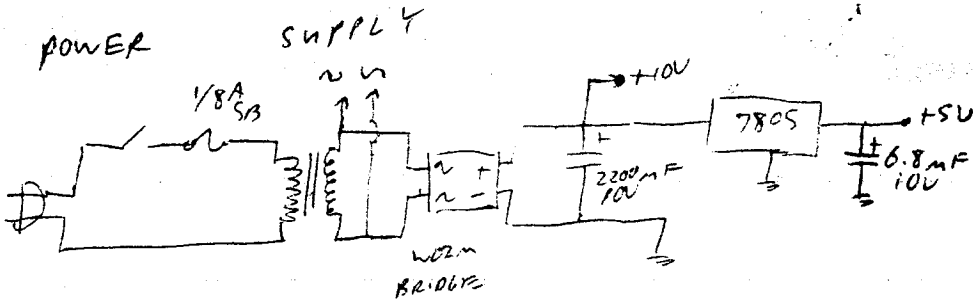
## CONTROL UNIT SCHEMATIC



LIGHT SWITCHES.

CLOSED SELECTS A  
OPEN FOR B

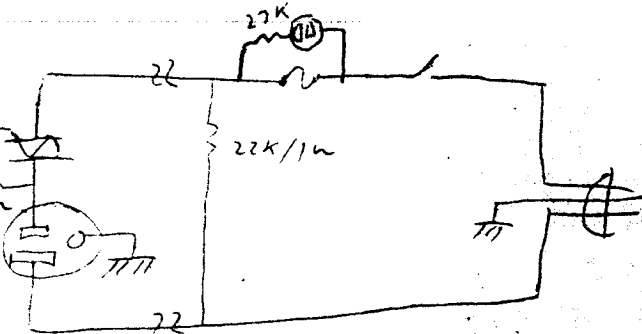
REPEATED  
12 TIMES  
EXCEPT FOR  
MASTER AND SELECT  
SWITCHES AND ZERO  
POINT DETECTOR



POWER

BOX  
MOC 3010

CM  
PIN 15  
TO JUMPS



REPEAT  
12 TIMES



# FRASER ELECTRONICS

P.O. BOX 778 - EDMONTON, ALBERTA T5J 2L4 - (403) 454-5412

CANNON	PLUG	PIN	OUT
DIMMER	PIN #	SWITCH	PIN #
1	A	1	S
2	B	2	T
3	C	3	X
4	D	4	Z
5	J	5	a
6	H	6	b
7	G	7	e
8	F	8	f
9	E	9	g
10	L	10	h
11	P	11	j
12	R	12	k

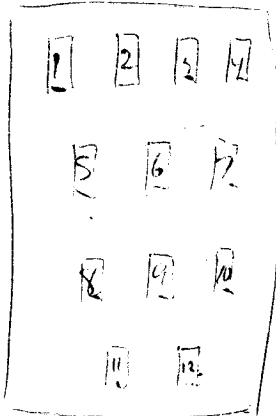
CANNON  
28-21 CONNECTOR

CHASER	PIN #
1	m
2	n
3	p
4	r

# FRASER ELECTRONICS

P.O. BOX 778 - EDMONTON, ALBERTA T5J 2L4 - (403) 428-9655

OUTPUT PCB.



IC 1, 2, 3, 4, 8, 12 7406  
 IC 5, 6, 7 7415  
 IC 8, 9, 10 7415

LINE	INPUTS		7406 I/P	7415 INPUT	7406 O/P	7415 OUTPUT	JWEL PIN #	IC W/IC	
	GPP A	BIP B						IN	OUT
1	5-2	5-3	5-4 1-1 1-3	8-2	1-2 1-4	8-16	1	11-1	11-2
2	5-5	5-6	5-7 1-7	8-3	1-6 1-8	8-15	2	11-3	11-4
3	5-11	5-10	5-9 1-13 1-11	8-6	1-12 1-10	8-10	3	11-5	11-6
4	5-14	5-13	5-12 2-3	8-7	2-4 2-2	8-9	4	11-9	11-8
5	6-2	6-3	6-4 2-5 2-9	9-2	2-6 2-8	9-16	5	11-11	11-10
6	6-5	6-6	6-7 2-4 2-13	9-3	2-12 2-12	9-15	6	11-13	11-12
7	6-11	6-10	6-9 3-3 3-1	9-6	3-4 3-2	9-10	7	12-1	12-2
8	6-14	6-13	6-12 3-9 3-6	9-7	3-8 3-6	9-9	8	12-3	12-4
9	7-2	7-3	7-4 3-12 3-13	10-2	3-20 3-12	10-16	9	12-5	12-6
10	7-5	7-6	7-7 4-1 4-3	10-3	4-2 4-4	10-15	10	12-9	12-8
11	7-11	7-10	7-9 4-13 4-5	10-6	4-12 4-12	10-10	11	12-11	12-10
12	7-14	7-13	7-12 4-11 4-4	10-7	4-10 4-8	10-9	12	12-13	12-12
							IC # FIRST		
							PIN # SECOND		
							ALL		
							LEDS		
							- TEXAS		
							TIL 220		