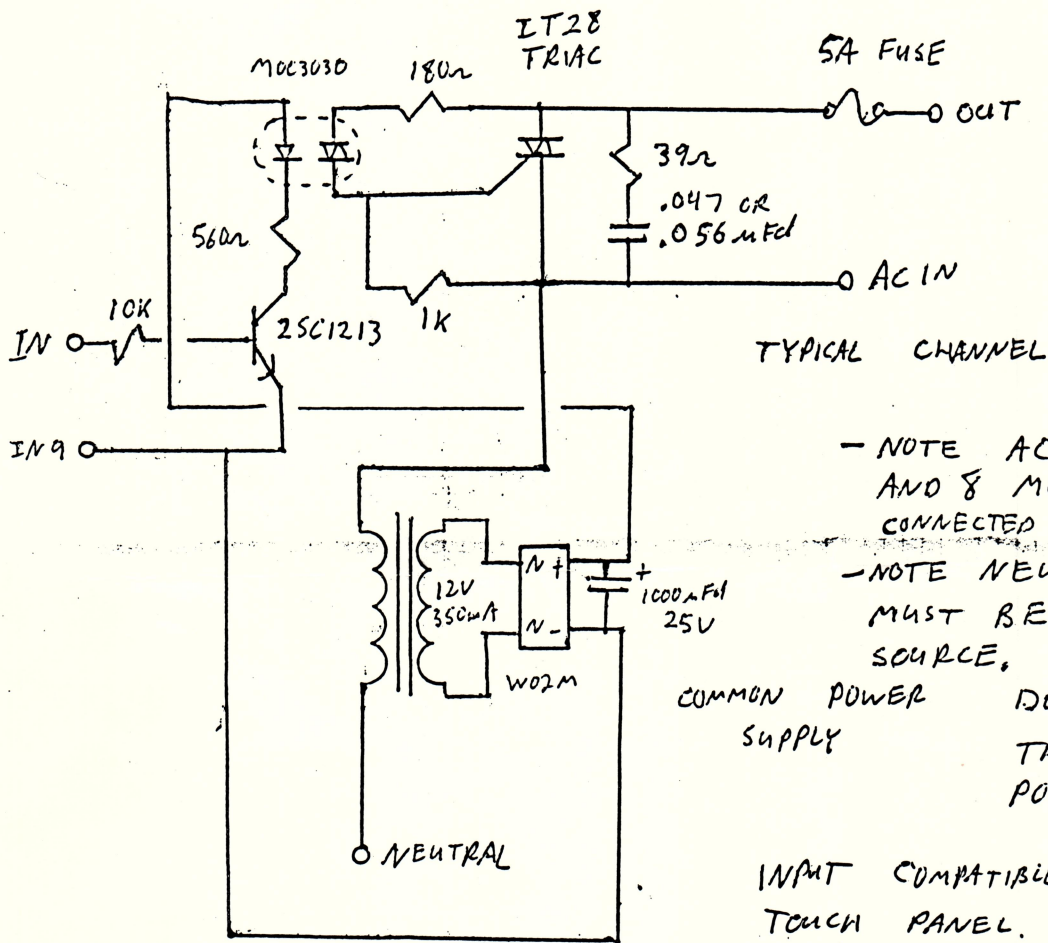


	PIN #	INPUT CONN (MALE PINS)	OUTPUT CONN (FEMALE PINS)
	1	IN 1	OUT 1
	2	IN 2	OUT 2
	3	IN 3	OUT 3
	4	IN 4	OUT 4
	5	IN 5	OUT 5
	6	IN 6	OUT 6
	7	AC CASE GROUND	AC IN 5, 6
	8	NC	AC IN 1, 2, 3, 4, POWER SUPPLY
	9	GND	NEUTRAL

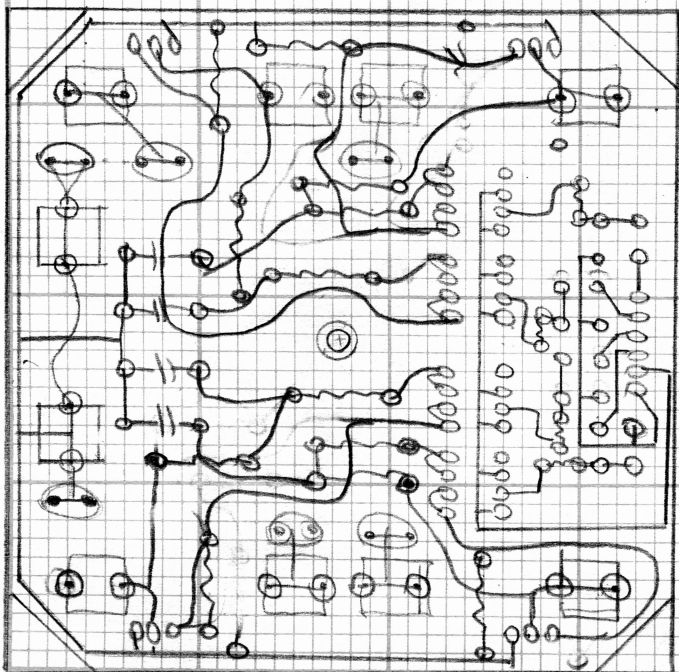
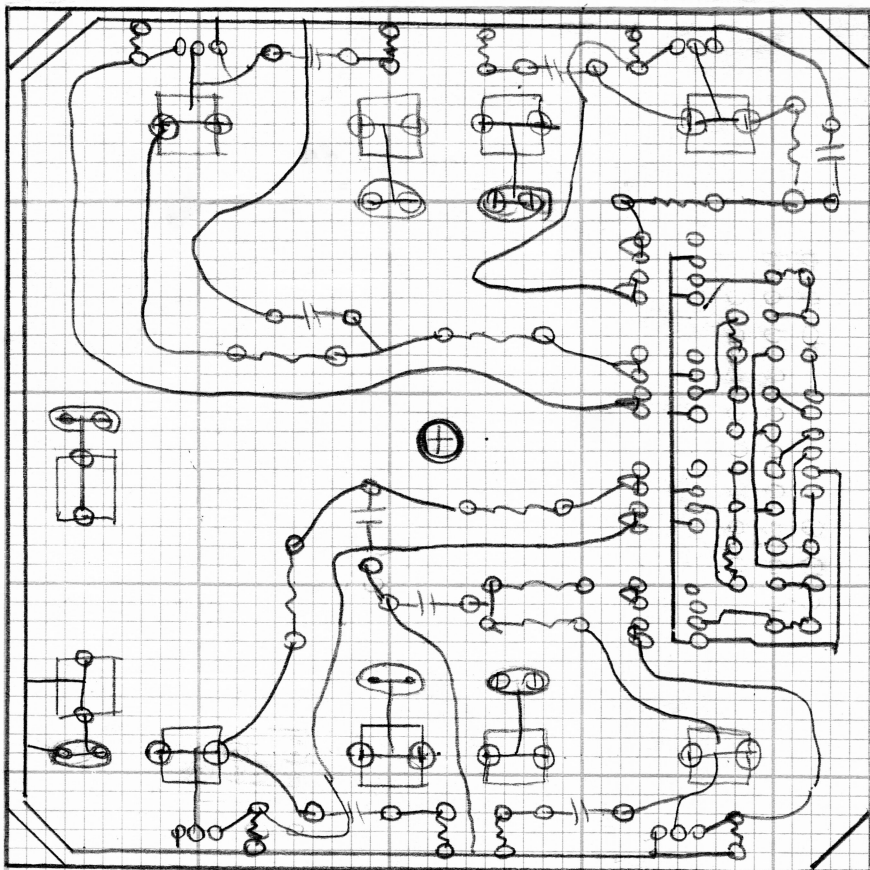


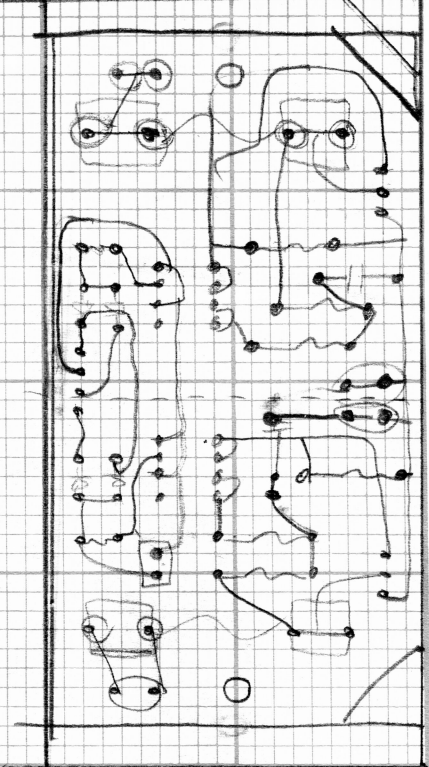
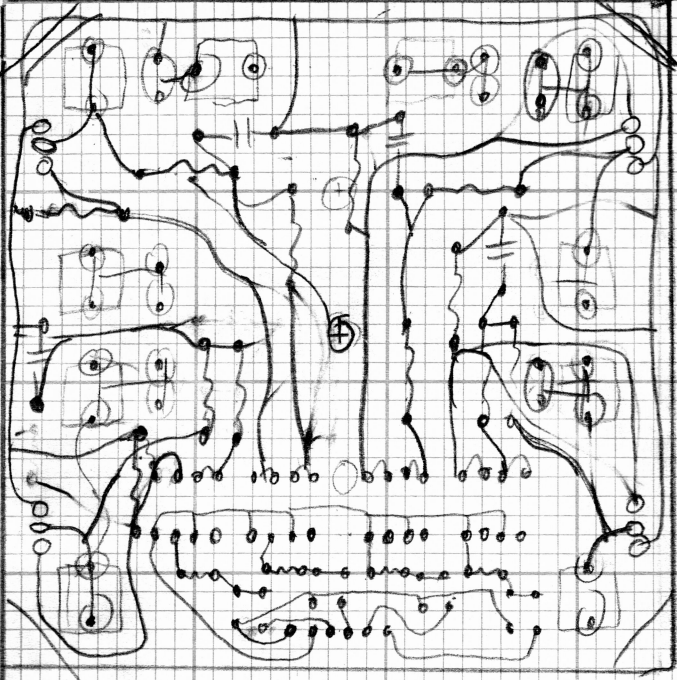
TYPICAL CHANNEL

- NOTE AC INPUTS ON PINS 7 AND 8 MUST BOTH BE CONNECTED TO AC.
- NOTE NEUTRAL OF LOAD MUST BE CONNECTED AT SOURCE, NEUTRAL FOR LOAD COMMON POWER DOES NOT GO THROUGH THIS POWER PACK SUPPLY

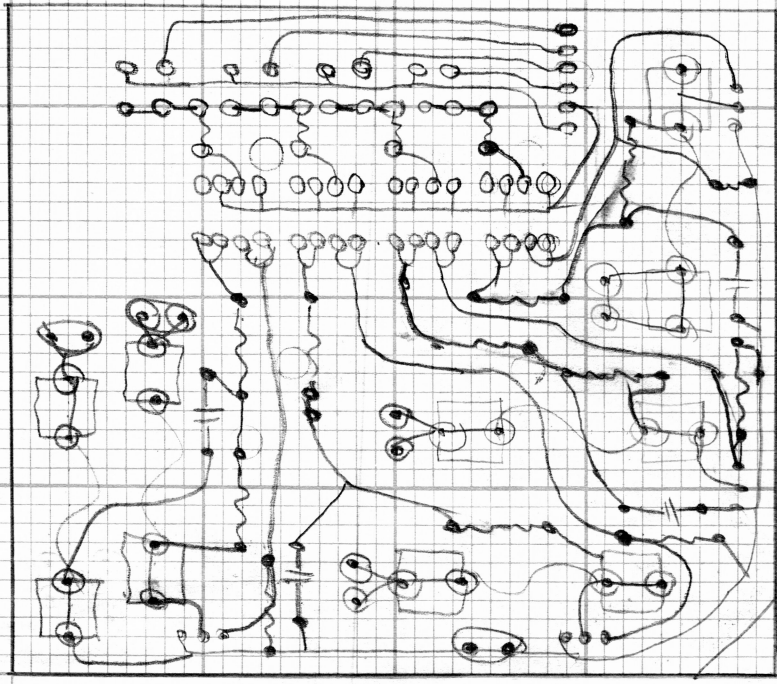
INPUT COMPATIBLE WITH PULSTAR TOUCH PANEL.

QND-1 POWER PACK FOR FLASHLIGHT

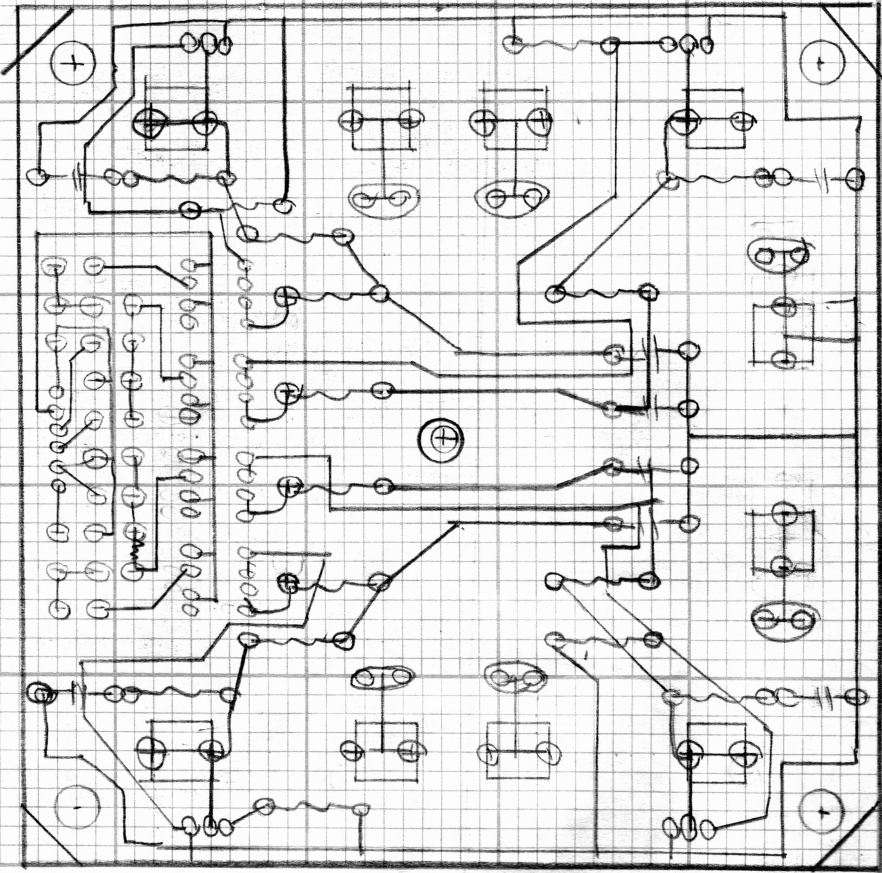
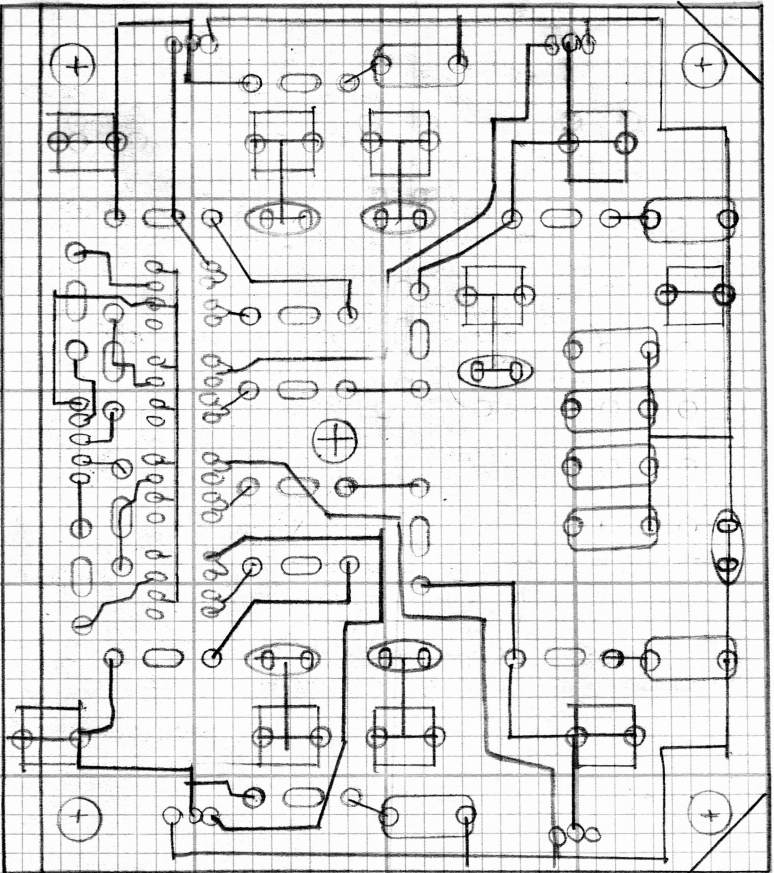




1/2cm pwr B0
2 m¹⁰
9x4 B0x



4cm FOR
5x5 BOX



1-25-55

