

Technical Support

D-Link's website contains the latest user documentation and software updates for D-Link products.

D-Link provides free technical support for customers within the United States and Canada for the duration of the product's warranty period. U.S. and Canadian customers can contact D-Link Technical Support through our website or by phone.

United States

Telephone
(877) 453-5465

24 hours a day 7 days a week

World Wide Web
<http://support.dlink.com>

E-mail
support@dlink.com

Canada

Telephone
(800) 361-5265

Monday through Friday, 7:30am to 03:00am ET.

World Wide Web
<http://support.dlink.ca>

E-mail
support@dlink.ca

©2005 D-Link Corporation/D-Link Systems, Inc. All rights reserved. D-Link, the D-Link logo, and Securicam are trademarks or registered trademarks of D-Link Corporation or its subsidiaries in the United States and other countries. Other trademarks are the property of their respective owners. All references to speed are for comparison purposes only. Product specifications, size, and shape are subject to change without notice, and actual product appearance may differ from that depicted herein. Visit www.dlink.com for more details.

D-Link®

Installation Guide

D-Link DFE-690TXD

32-bit Fast Ethernet Adapter

This Installation Guide includes instructions for:

- Windows XP
- Windows 2000
- Windows Me
- Windows 98/98se
- Macintosh OS 8/9



Installation Guide Contents:

- Section 1: Pre-Installing the Windows XP, 2000, Me and 98/98se Driver
- Section 2: Pre-Installing the Macintosh OS 8/9 Driver
- Section 3: Finishing Insert the DFE-690TXD into your Laptop
- Section 4: Finishing the Windows Installation
- Section 5: Finishing the Macintosh Installation
- Section 6: Technical Support

Package Contents:

Verify that your D-Link DFE-690TXD package contains the following items. If any items are missing, please contact your reseller.

- D-Link DFE-690TXD
- Drivers on CD-ROM
- Manual on CD-ROM



For Windows XP/2000/Me/98: Run the Install CD BEFORE installing the DFE-690TXD into your laptop.

Macintosh users: Proceed to Section 2: Pre-Installing the Macintosh OS 8/9 Driver

D-Link®

Building Networks for People

Ver.2.00(B)
2005/06/08

190/D6901 X16007

1 Pre-Installing the Windows XP, 2000, Me and 98/98se Driver

Macintosh users: Proceed to Section 2: Pre-Installing the Macintosh OS 8/9 Driver

- With your computer ON, insert the Driver CD of the DFE-690TXD into your CD-ROM Drive.
- The Autorun Screen will appear as shown here.
- Select "Install Drivers" to pre-install the drivers onto your computer.



- After a few moments, the "Install Finish" screen will appear. Select "OK".

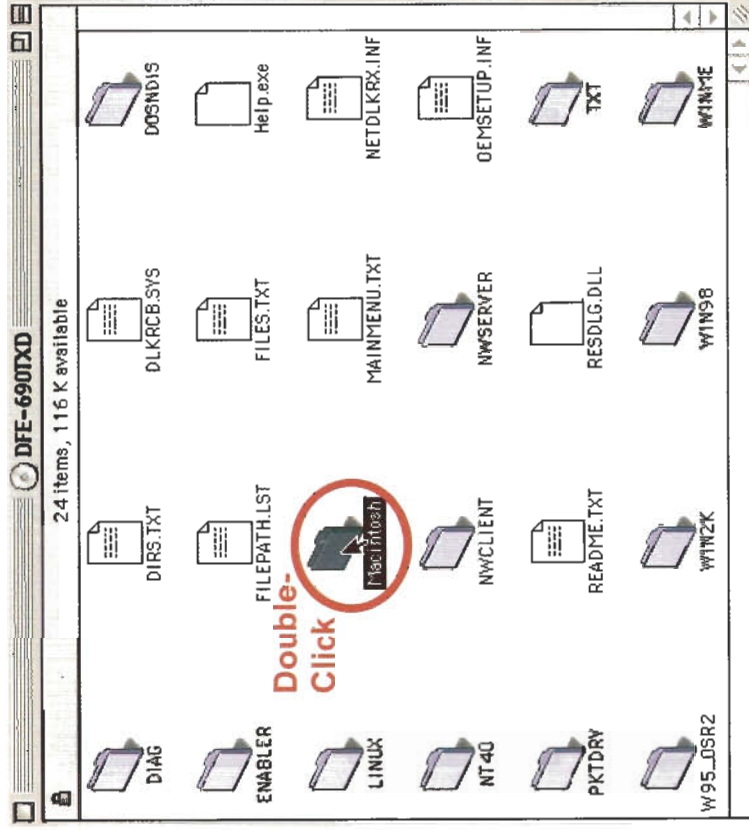


- Select "Yes," if you are prompted to restart your computer. Restart the computer manually if the prompt does not occur. (Go to Start > Shut down > Restart.)

- Windows XP/2000/Me/98 users:** Continue to **Section 3**.
- Macintosh users:** Continue to **Section 2**.

2 Pre-Installing the Macintosh OS 8/9 Driver

- Insert the Driver CD into your CD-ROM drive.
- When the CD-ROM icon appears on the Desktop, double-click it to open the contents of the CD.
- The window below will appear. Double-click the Macintosh folder.

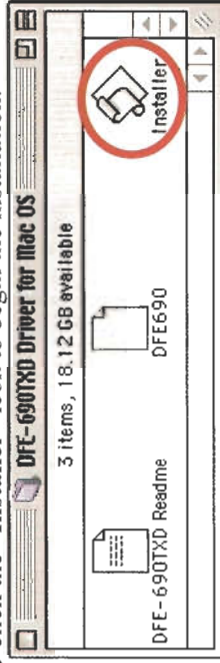


- **Drag & Drop** the “DFE-690TXD Driver for Mac OS” driver onto your Desktop and **double-click** the copied folder.

Desktop



- Double-click the “Installer” icon to begin the installation.



- Click the “Install” button to install the driver.



- Click “OK” to restart your computer.



- Proceed to Section 3.

3

Insert the DFE-690TXD into your Laptop

This section refers to all users, regardless of which operating system you use.

You must first install the drivers as explained in Section 1 (for Windows users), or Section 2 (for Macintosh users). If you have not done this and you have inserted the DFE-690TXD into the Cardbus slot, you will need to cancel the New Hardware Wizard (for Windows users), and start over at the beginning of this installation guide (for Windows or Macintosh).

- Insert the DFE-690TXD into the Cardbus slot of your laptop.



- Gently insert the front end of the DFE-690TXD into the Cardbus slot on your laptop until it is firmly seated. Make sure that the card is face-up, as shown. Do not force the insertion.
- Connect an Ethernet Cable (CAT5) from a switch or hub to the DFE-690TXD.
- Windows users: Continue to **Section 4**.
- Macintosh users: Continue to **Section 5**.

4

Finishing the Windows Installation

- To complete the installation of the DFE-690TXD:
- Make sure that the DFE-690TXD CD-ROM is inserted in the CD-ROM drive
- The DFE-690TXD is inserted into your laptop
- The laptop is turned ON
- See the section below that corresponds to your Operating System to complete the installation:

Windows XP Users

- Windows XP completes the installation of the DFE-690TXD automatically. A "Found New Hardware" message will appear in the task bar to indicate that the installation is complete.

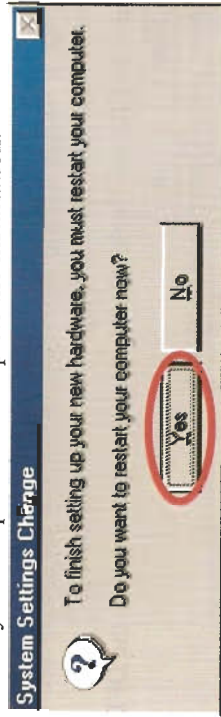


Windows 2000 Users

- Windows 2000 completes the installation of the DFE-690TXD automatically. When the "hour glass" disappears, the installation is complete.

Windows Me & 98/98se Users

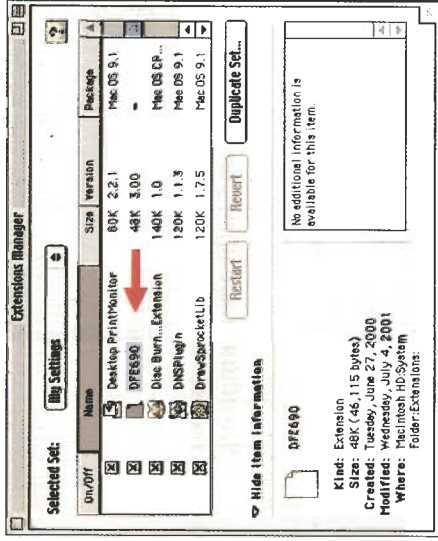
- Windows Me & 98/98se installs the drivers automatically.
- If a "Version Conflict" screen appears, select "Yes" to use the newer file and continue.
- A screen will appear asking you to restart your computer. Select "Yes" to restart your computer and complete the installation.



5

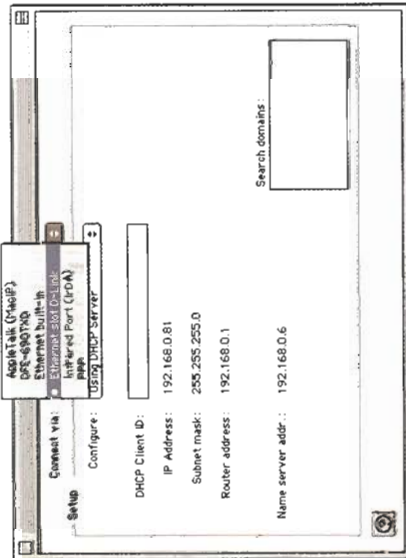
Finishing the Macintosh Installation

- After the Macintosh restarts, the driver will be installed. To check that the driver was installed correctly, open the **Apple Menu**, choose "Control Panel" and then choose "Extensions Manager". When it opens, you will see an "Extensions Manager" heading. Scroll down to the "Extensions" heading and look for an extension labeled "DFE-690". Make sure that the On/Off box to the left of the driver is checked to enable the DFE-690TXD.



- You must now configure the network adapter in order to access the network. From the Desktop, open the **Apple Menu**, choose **Control Panel** and click **TCP/IP**.
- Click the "Connect via" list box arrow and select "Ethernet slot D-Link". **Do not choose "DFE-690 Ethernet"**.
- Next, click on the "Configure" list box. Choose "Manual" (For Static Addressing, you set the IP address manually) or "Using DHCP Server" (for Dynamic Addressing, your computer receives an IP address from the server). If you choose "Manual", please specify the IP address in the box provided.

- Choose “Quit” from the File Menu. When prompted to save the new
- settings, Click “Save.”



- Restart your Macintosh one more time for your changes to take effect.
Your adapter is now ready to network with other computers.

MEMO
