

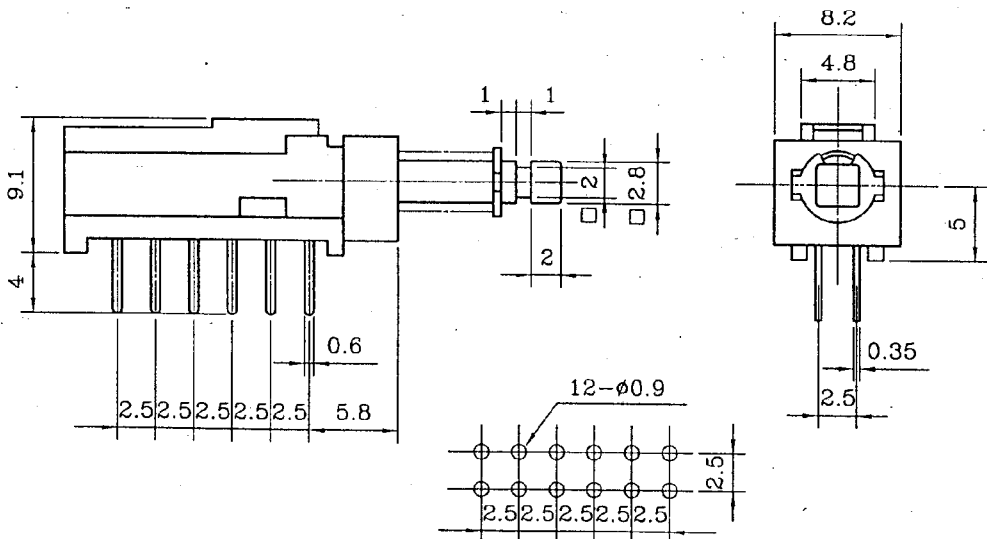
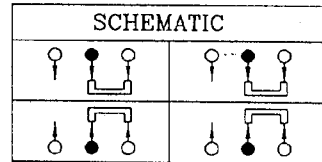
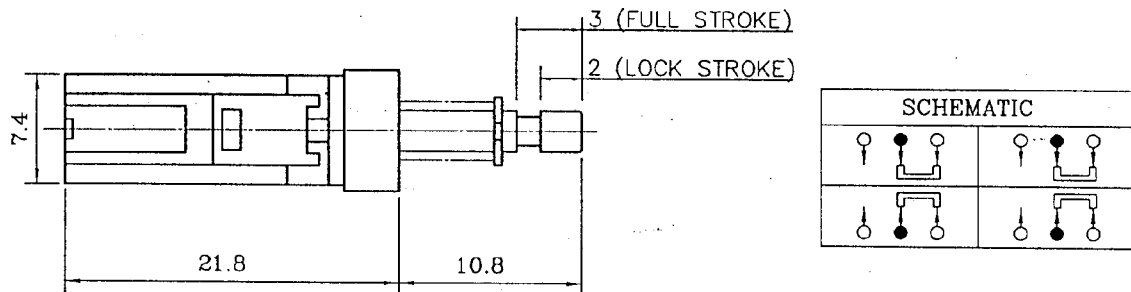
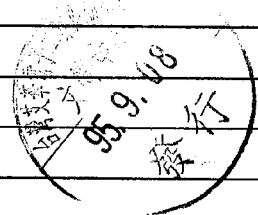
PUSH SWITCH

MODEL

SP70300F-0402-11F1-N

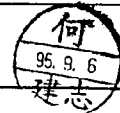
SPECIFICATIONS

Rating	DC30V 0.1A
Contact Resistance	50 mΩ Max.
Insulation Resistance	DC250V-100 MΩ Min.
Withstand Voltage	AC250V-1 Minute
Rotation Torque	300±150gf
Life cycle	10,000 Cycles
Sizes (m.m.)	As Following Drawings



NOTE:
 1. TOLERANCES UNLESS OTHERWISE SPECIFIED: ±0.3mm
 2. TIMING:NON- SHORTING(LOCK)

Date	2005.06.08	DWN	CHKD	APP'D
------	------------	-----	------	-------



TAIWAN ALPHA ELECTRONIC CO., LTD.