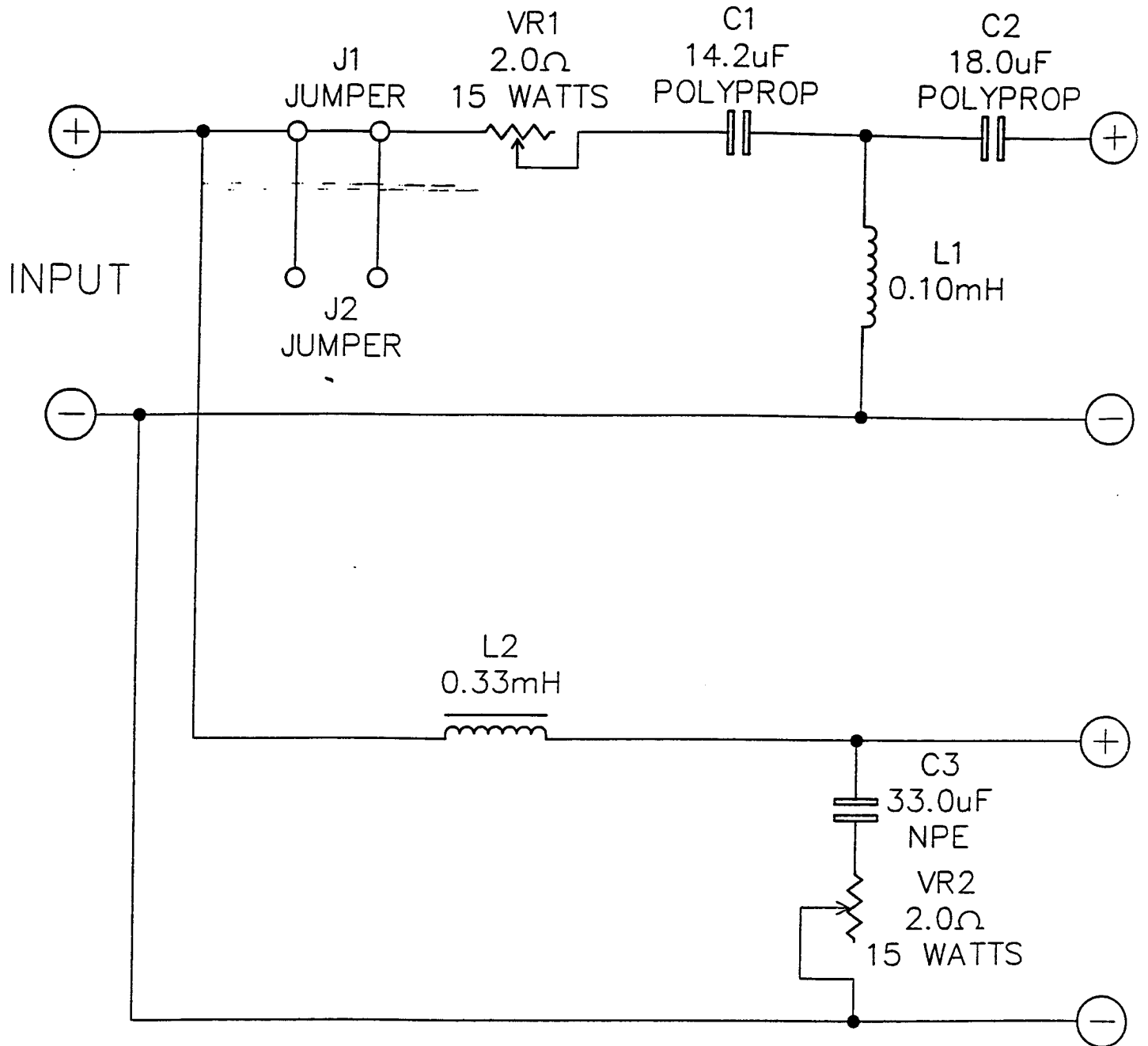


PRI



PRELIMINARY ONLY

REVISIONS				
ECO	REV.	DESCRIPTION	DATE	APPROVED
-	1	INITIAL PROTOTYPE DESIGN REPLACES 015-7717	07-19-95	J.J.
-	2	ADDED J2, CHANGE RESISTOR VR1 15 W WAS 5 W, VR2 WAS WIRE WOUND	09-11-95	<i>JJ</i> 9-11

BILL OF MATERIAL 06-21-95

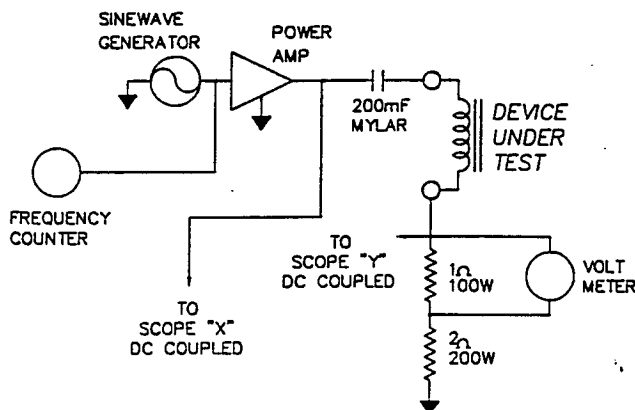
INDUCTORS		REF.	VALUE	TOL%	AMPS ^②	DCR	Q@1k	TYPE	AIR GAP	MATERIAL	SIZE
L1	0.10mH ^①	5	-	0.33	1.68	AIR	-	-	-	-	-
L2	0.33mH ^①	5	-	0.07	17.7	SLUG	-	-	-	IRON	10x40mm

CAPACITORS		REF.	VALUE	TOL%	D.F.%	(Hz)	AC VOLTS	TYPE	BRAND
C1	14.2uF	5	0.1	1K	100	POLYPROP	-	-	-
C2	18.0uF	5	0.1	1K	100	POLYPROP	-	-	-
C3	33.0uF	5	6.0	1K	100	NPE	-	-	-

RESISTORS		REF.	VALUE	TOL%	WATTS	TYPE
VR1	2.0 OHM	5	15	POTENTIOMETER	-	-
VR2	2.0 OHM	5	15	POTENTIOMETER	-	-

PROTECTION DEVICES: NONE
 BOARD: NONE
 WIRES: NONE
 CLIPS: NONE
 JUMPERS: J1 AND J2

- ① GenRad DigiBridge @1kHz.
- ② DC amps where inductance changes by 10%.
- ③ Tolerance applies to Inductance, DCR, and Q
- ④ Test set-up as shown:



INFINITY SYSTEMS, INC. PROPRIETARY

This document contains confidential and proprietary information that is the property of Infinity Systems, Inc. and may not be disclosed to or duplicated for others except as authorized by Infinity Systems, Inc.

Proto-Type Only
not for
Production

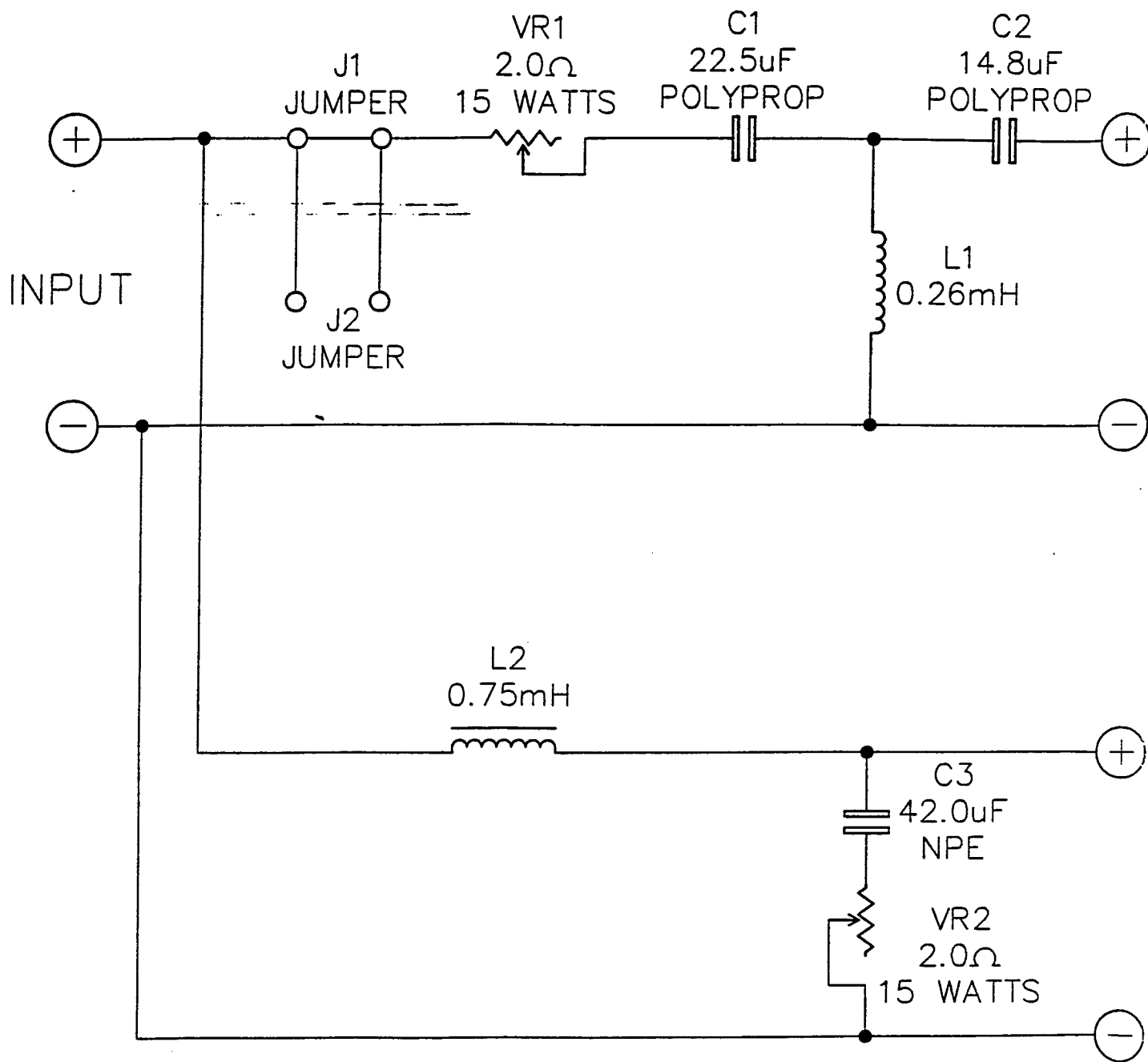
SEP 11 1995

BETA 10T XP TEN	
CROSSOVER SCHEMATIC WITH BETA 10T TWEETER	
P/N: .015...7739	
DWG NO: 015-7739-02262-38C	
DRAWN BY: R. RAHL	
DATE 07-19-95	
APPROVED: <i>JJ</i> 9-11-95	
DO NOT SCALE DRAWING	
SCALE N/A	
CAD FILE NOT TO BE USED FOR CNC PROGRAM	
CAD FILE NAME: CAR\BETA\10T\SCHEM1	
TOLERANCES: ANG: ± = .5° FRACT. ± = 1/32	
DECIMALS: .XX ± = .01 .XXX ± = .005	
REVISION: 2	
SHEET 1 OF 1	

TWEETER

WOOFER

PRE



ELIMINARY ONLY

REVISIONS				
ECO	REV.	DESCRIPTION	DATE	APPROVED
-	1	INITIAL PROTOTYPE DESIGN	06-20-95	J.I.
-	2	VR1 AND VR2 2.0 OHM WAS 1.5 OHM, ADD J2, L1 & L2: CHANGED DQ.	09-11-95	J.I. 9-11

BILL OF MATERIAL 06-20-95

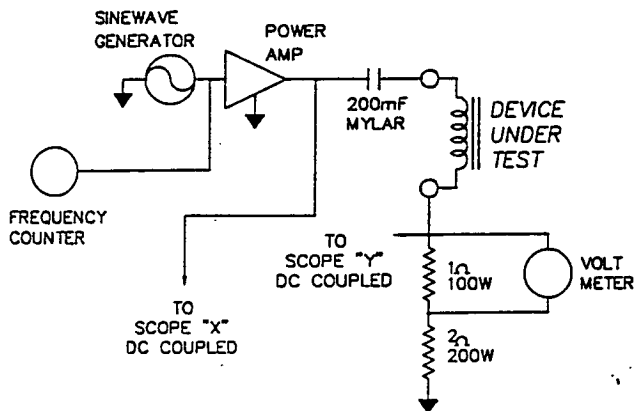
INDUCTORS						AIR GAP	MATERIAL	SIZE
REF.	VALUE	TOL%	AMPS ^②	DCR	DQ@1k	TYPE		
L1	0.26mH ^①	5	-	0.60	2.34	AIR	-	-
L2	0.75mH ^①	5	-	0.26	23.0	SLUG	-	IRON 10x40mm

CAPACITORS							
REF.	VALUE	TOL%	D.F.%	(Hz)	AC VOLTS	TYPE	BRAND
C1	22.5uF	5	0.1	1K	100	POLYPROP	-
C2	14.8uF	5	0.1	1K	100	POLYPROP	-
C3	42.0uF	5	6.0	1K	100	NPE	-

RESISTORS				
REF.	VALUE	TOL%	WATTS	TYPE
VR1	2.0 OHM	5	15	POTENTIOMETER
VR2	2.0 OHM	5	15	POTENTIOMETER

PROTECTION DEVICES: NONE
 BOARD: NONE
 WIRES: NONE
 CLIPS: NONE
 JUMPERS: J1 AND J2

- ① GenRad DigiBridge @1kHz.
- ② DC amps where inductance changes by 10%.
- ③ Tolerance applies to Inductance, DCR, and Q
- ④ Test set-up as shown:



INFINITY SYSTEMS, INC. PROPRIETARY

This document contains confidential and proprietary information that is the property of Infinity Systems, Inc. and may not be disclosed to or duplicated for others except as authorized by Infinity Systems, Inc.

Proto-Type Only
not for
Production

SEP 11 1995

Infinity	
BETA 4.5.8 X P ONE	
CROSSOVER SCHEMATIC - VERSION 1 WITH BETA 1 TWEETER	
P/N: .015...7717	
DWG NO: 015-7717-02242-38C	
DRAWN BY: R. RAHL	DATE 06-20-95
APPROVED: <i>[Signature]</i> 9-11-95	
DO NOT SCALE DRAWING	SCALE N/A
CAD FILE NOT TO BE USED FOR CNC PROGRAM	
CAD FILE NAME: CAR\BETA\1\SCHEM1	
TOLERANCES: ANG: ± = .5° FRACT. ± = 1/32	
DECIMALS: .XX ± = .01 .XXX ± = .005	
REVISION: 2	SHEET 1 OF 1

TWEETER

WOOFER