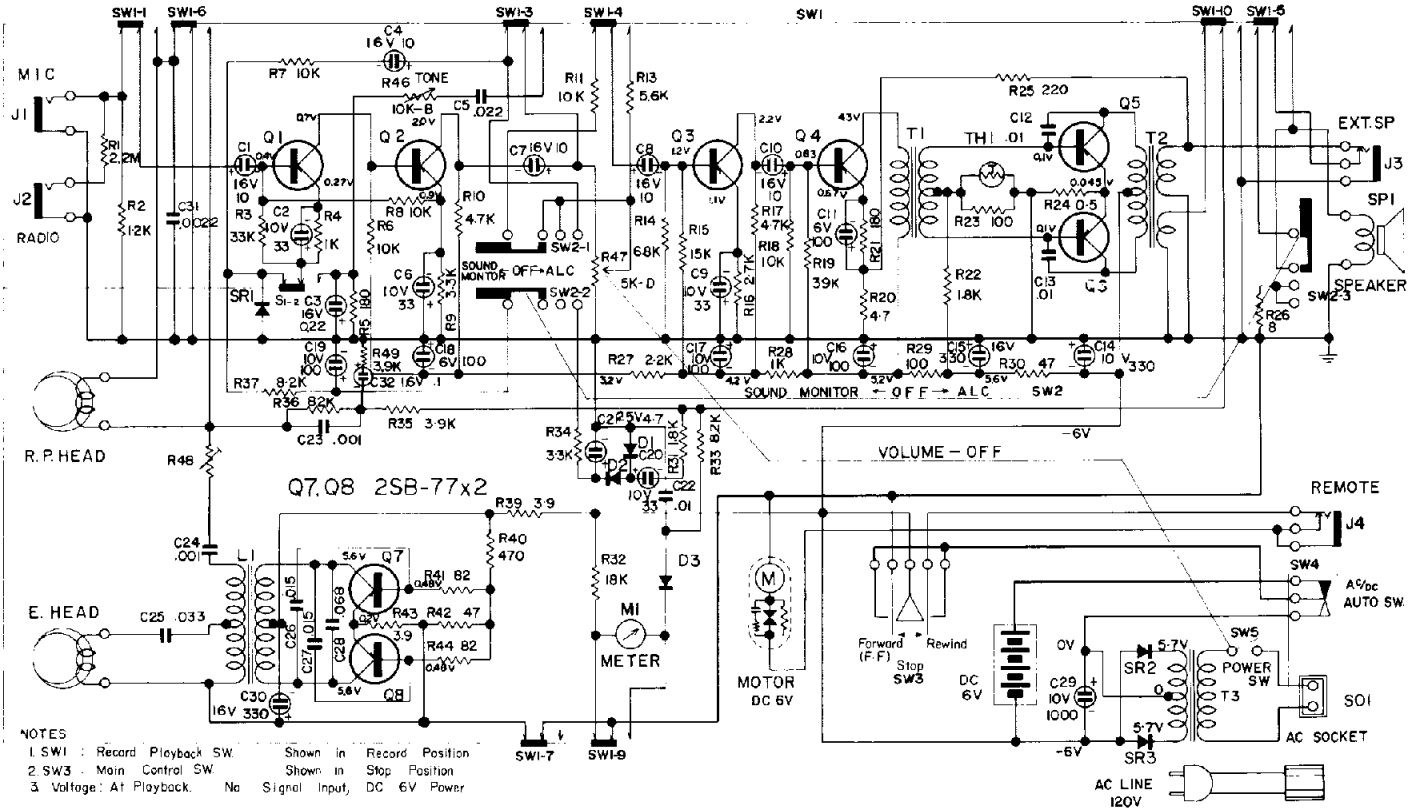




MODEL AV 80

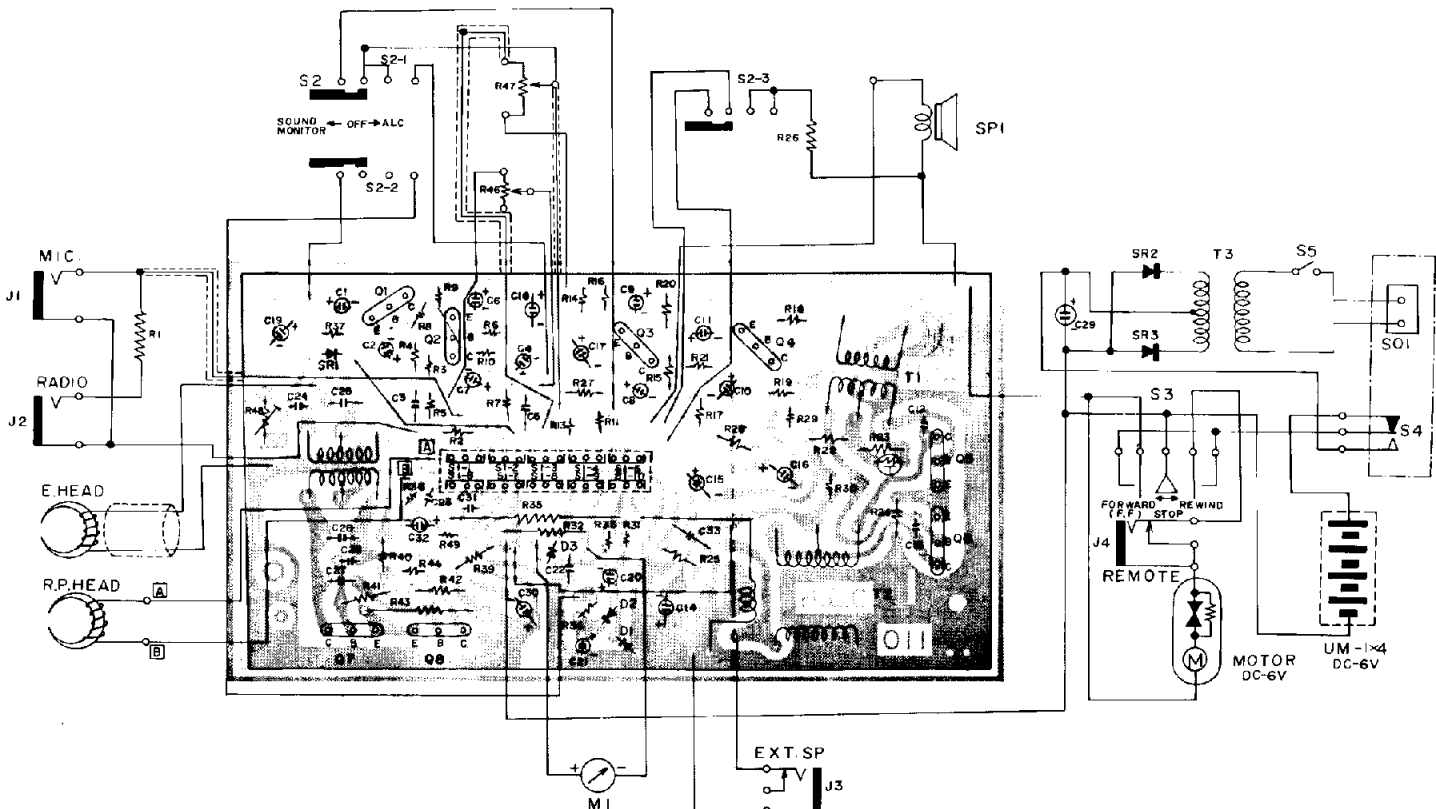
Q1 2SB-75 Q2 2SB-75 Q3 2SB-75 Q4 2SB-77 Q5,Q6 2SB-370x2

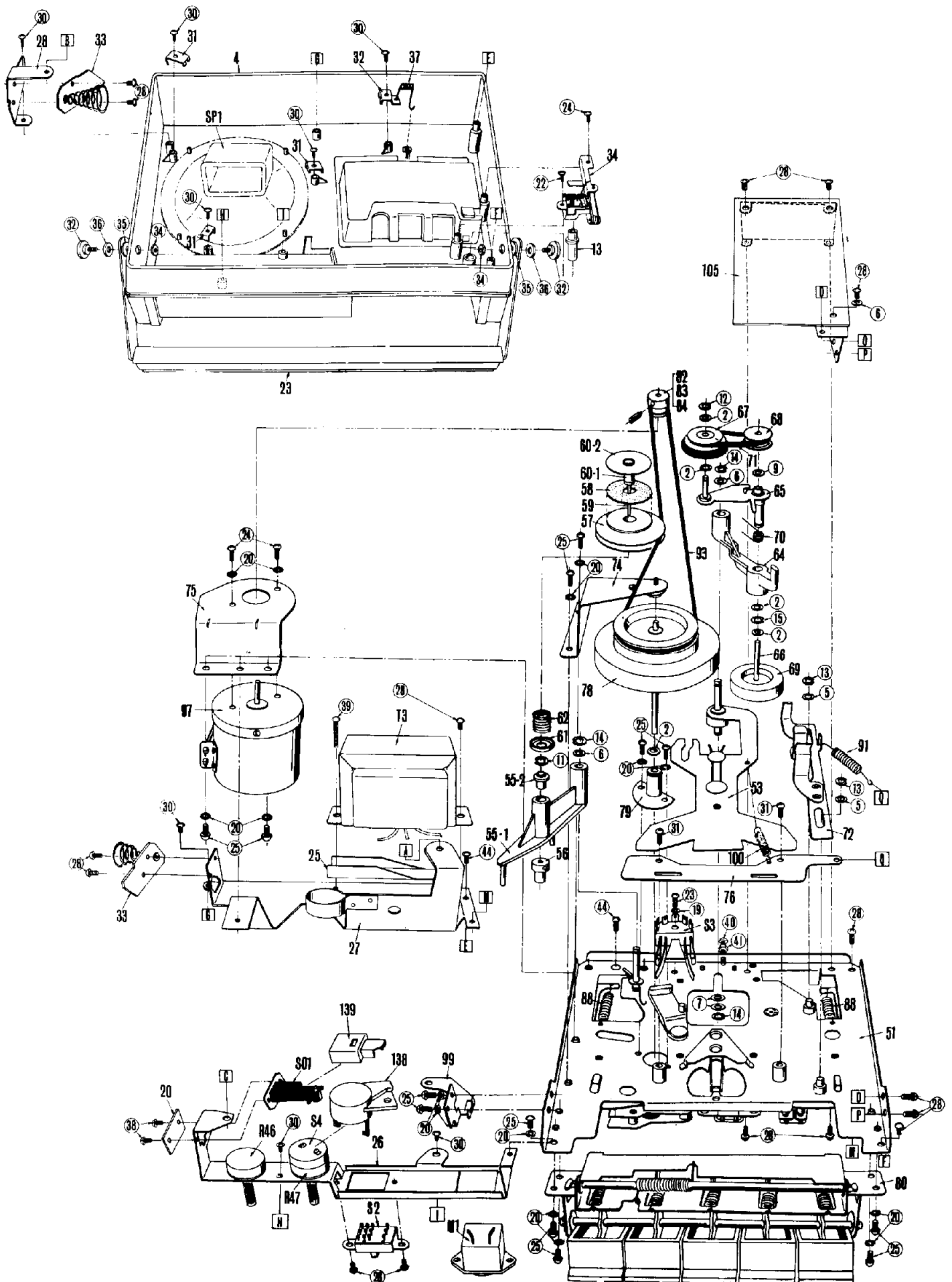


NOTES

1. SW1 : Record Playback SW Shown in Record Position
2. SW3 : Main Control SW Shown in Stop Position
3. Voltage : At Playback. No Signal Input, DC 6V Power

AV-80





EXPLODED VIEW, DECK MECHANISM (BOTTOM)