

- NOTES: UNLESS OTHERWISE SPECIFIED,
 1. ALL VOLTAGES 10% TOLERANCE MEASURED FROM CHASSIS WITH 100000Ω/V METER & NO SIGNAL APPLIED.
 2. ARROWS ON CONTROLS INDICATE CLOCKWISE ROTATION.
 3. ALL RESISTORS RATED IN OHMS, ± 10%, 1/2 WATT.
 4. ALL CAPACITORS RATED IN MFD, ± 20%, 50 VOLTS.
 5. CALIFONE PART NUMBERS SHOWN ().
 6. ADD (-01) TO (30-XXX) 60HZ MOTOR PART NO. TO ORDER CORRECT 50HZ EQUIVALENT. EXAMPLE: (30-101) FOR 60HZ BECOMES (30-101-1) FOR 50 HZ.

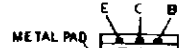
TRANSISTOR BASING



MPS70 (17-476)
 MPS55 (17-483)
 2N5087 (17-487)



2N5232A (17-482)
 2N3392 (17-451)



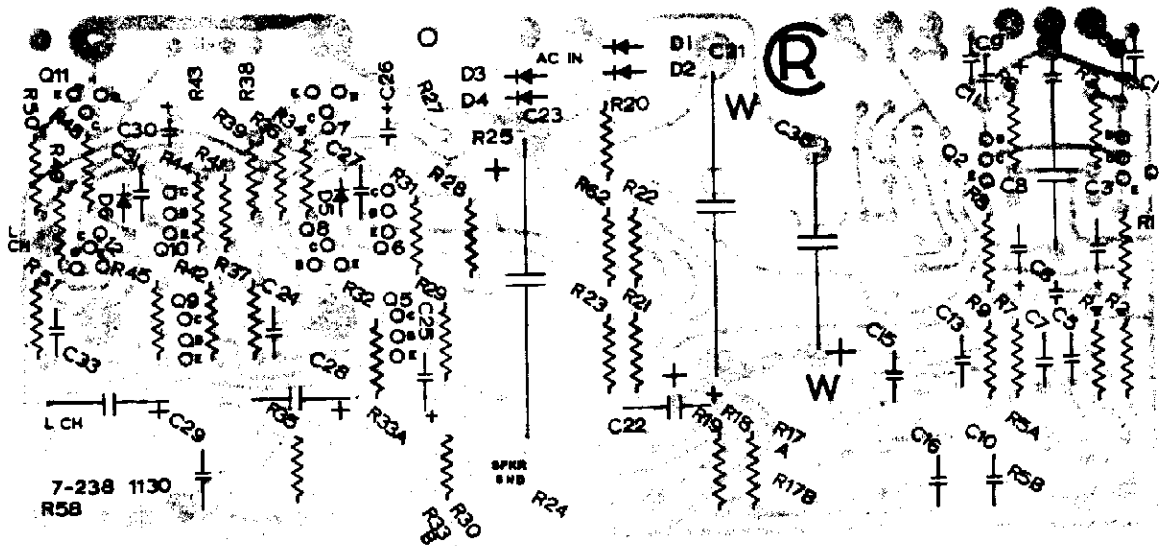
SJE227A (17-467)
 SJE228A (17-468)



SPS 2323 (17-479)
 MPS-U45



2N6121 (17-490)
 2N6124 (17-491)



DESCRIPTION OF CHANGES:

Added D7; R64 & R65 were 100Ω, 1/2 Watt.

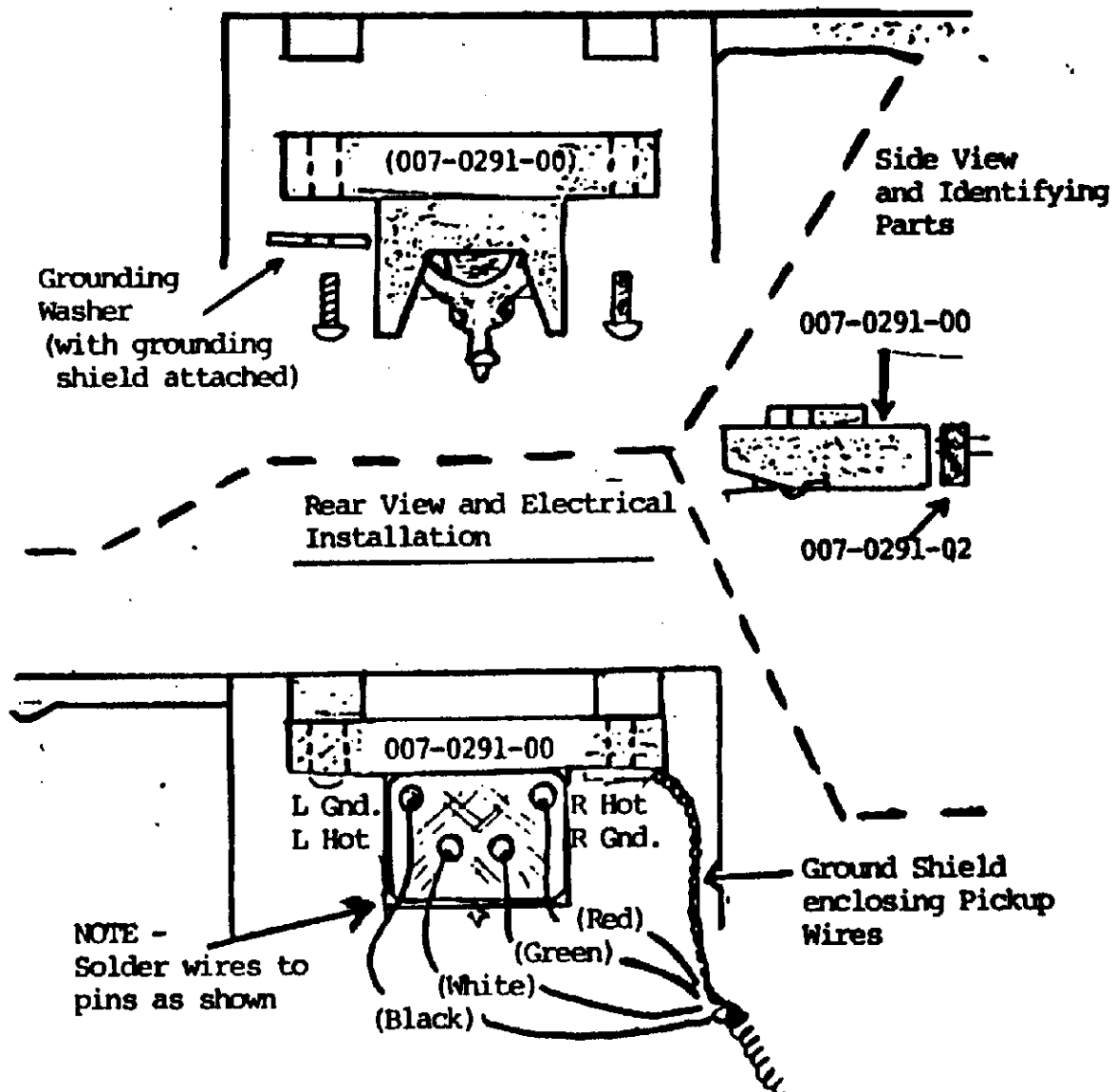
SPECIFICATIONS:

- Output at Clipping: 6-1/2 Volts (across 8 ohms)
- Signal-to-Noise Ratio: 45db
- Residual Noise: -30db
- Signal-to-Rumble: -15db
- Harmonic Distortion: 5%
- Stylus Pressure: 6 to 8 grams

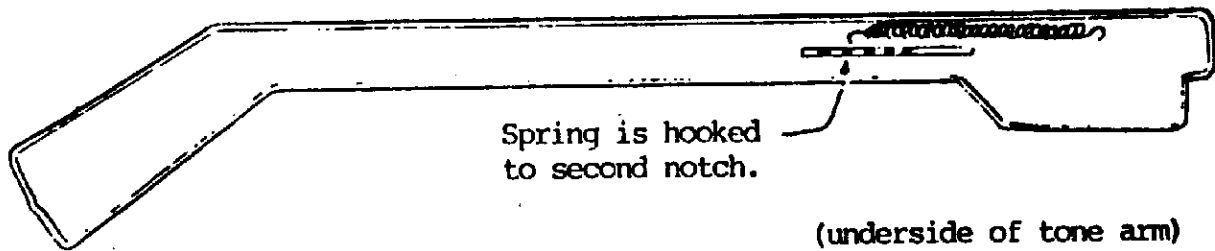
SUBSTITUTE STEREO CARTRIDGE ASSEMBLY (P/N 7-291)

INSTALLATION PROCEDURE FOR MODEL 1130K

1. Remove present cartridge (P/N 7-17-2) 13AT. Then unscrew the two screws from holder.
2. Unsolder all the wires attached to holder (P/N 6-106)
3. See drawing as shown below for electrical installation. On connector plug (P/N 7-291-2) and cartridge (7-291).

FRONT VIEW OF MECHANICAL INSTALLATION

4. Take out the needle before mounting the holder assembly. If new cartridge assembly (P/N 7-291) cannot be mounted using existing screws, substitute screws with P/N 2-436.
5. Reset arm tracking force as shown below.

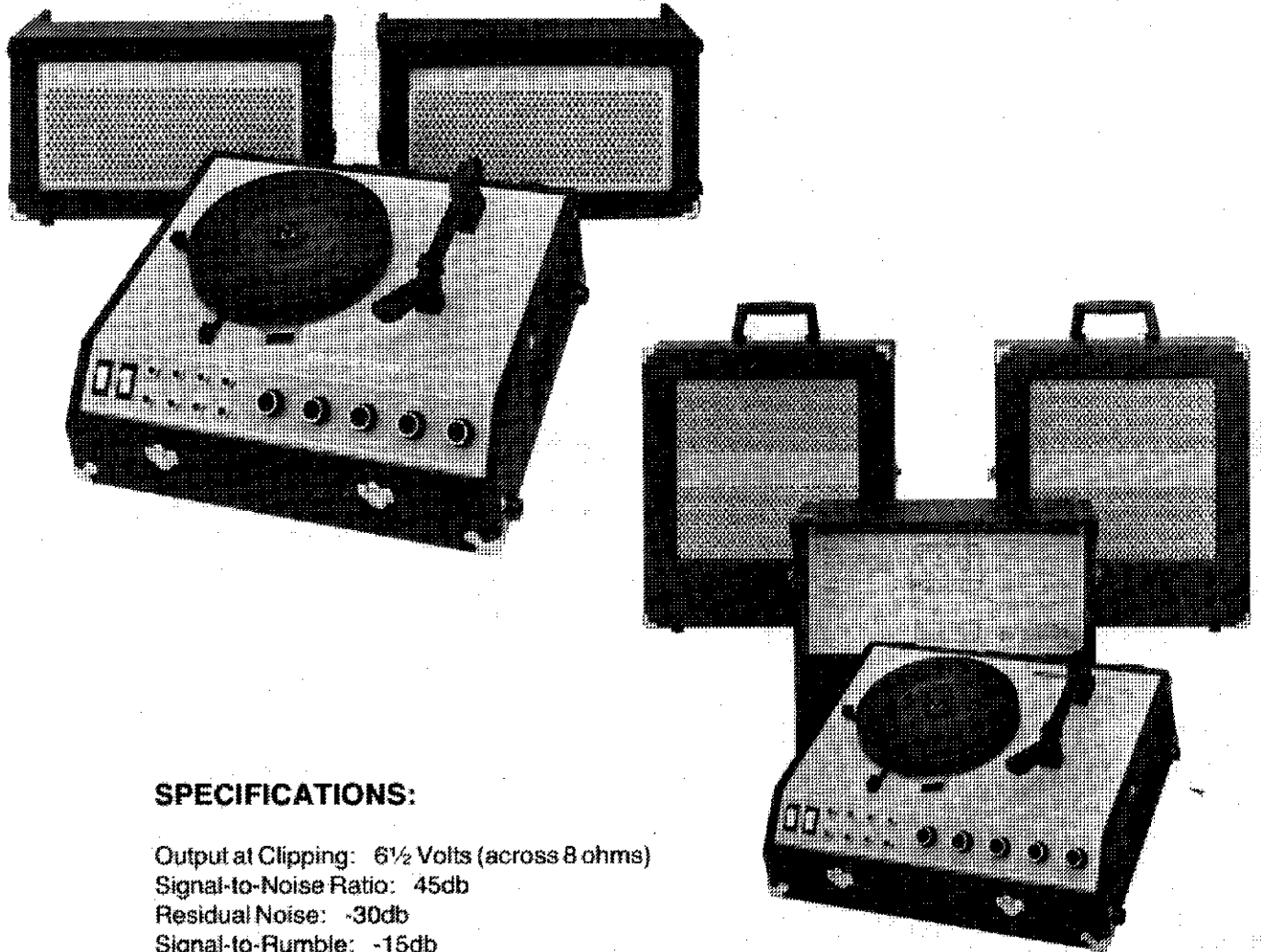


6. Make the following wiring changes on P.C. Board assembly.
 - * a) Both black, green and shield wire are soldered to ground eyelet.
 - b) White wire soldered to hot side left channel eyelet.
 - c) Red wire soldered to hot side right side right channel eyelet.

- * For 1155K - Both black, green and shield wire are soldered to ground lug.

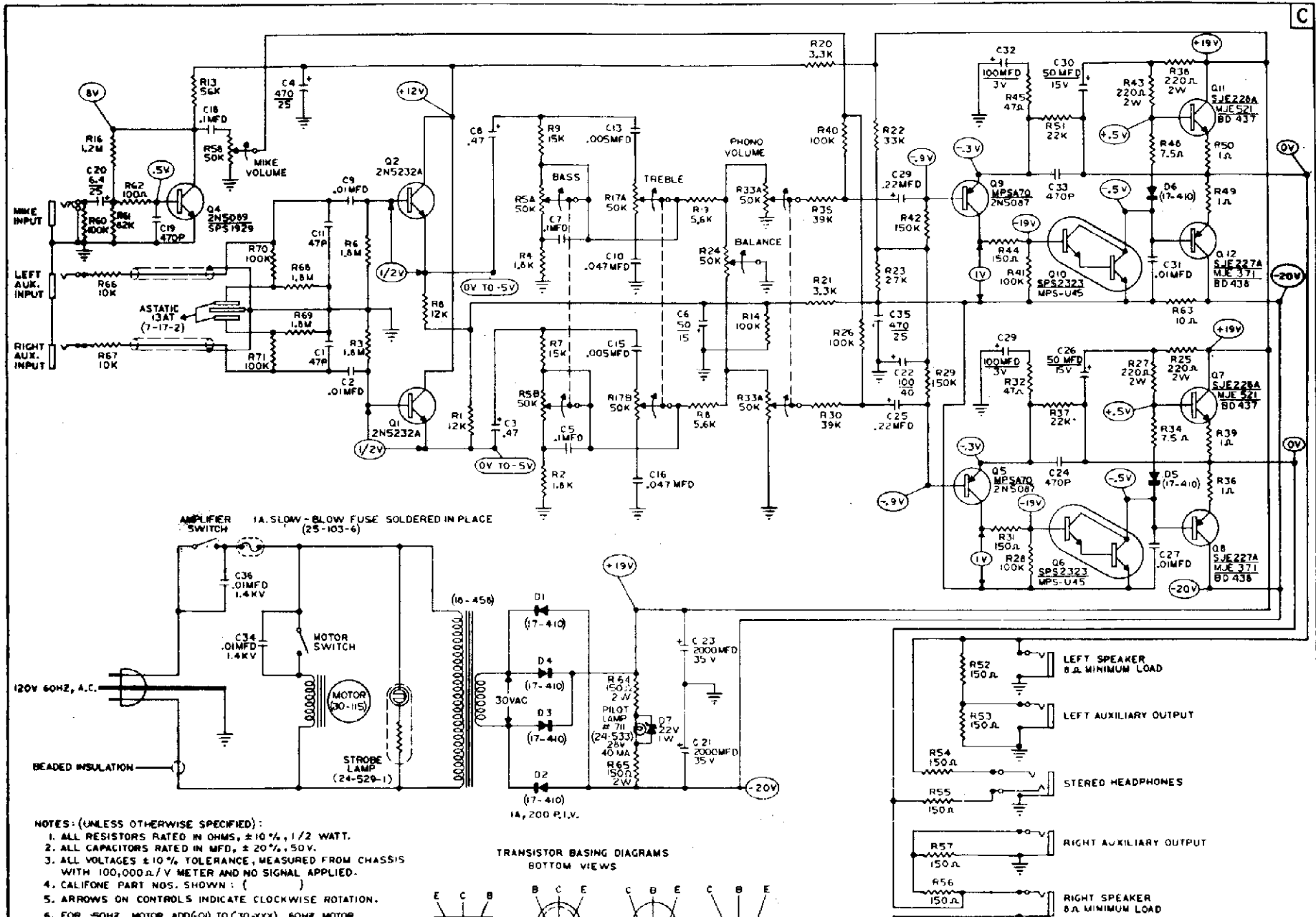


SERVICE DATA
MODELS 1155K/1155K-12

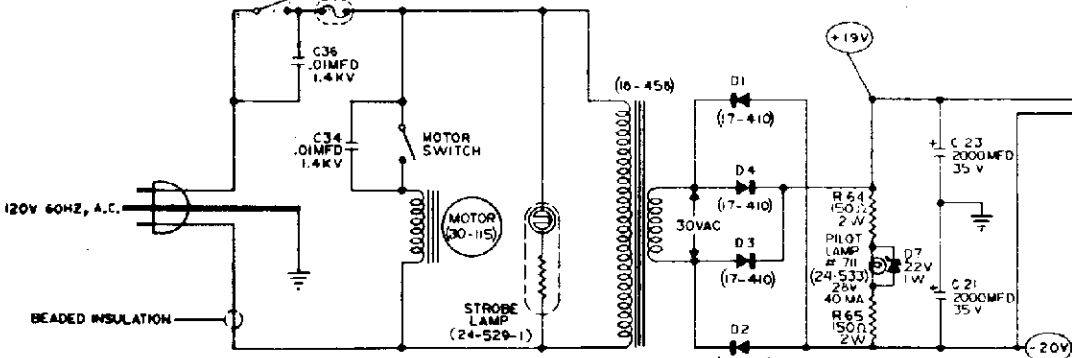


SPECIFICATIONS:

- Output at Clipping: $6\frac{1}{2}$ Volts (across 8 ohms)
- Signal-to-Noise Ratio: 45db
- Residual Noise: -30db
- Signal-to-Rumble: -15db
- Microphone Sensitivity: 3MV
- Auxiliary Sensitivity: 1 Volt
- Auxiliary Output: 1.2 Volts into 600 ohms
- Harmonic Distortion: 3%
- Stylus Pressure: 6 to 8 Grams
- Speed Variation: +10 to -20% of nominal

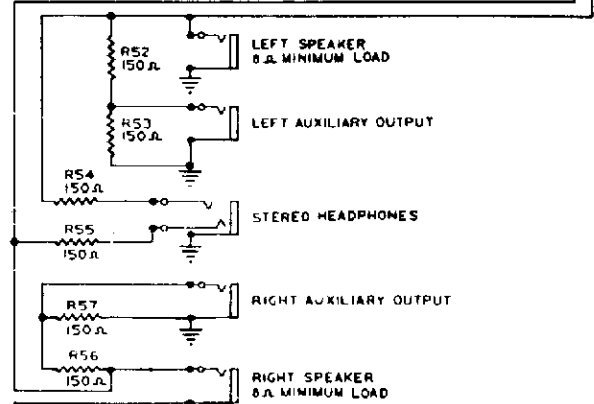
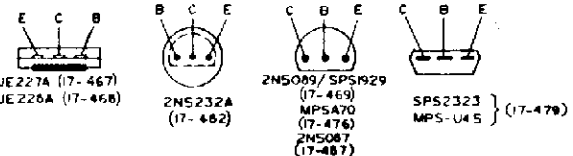


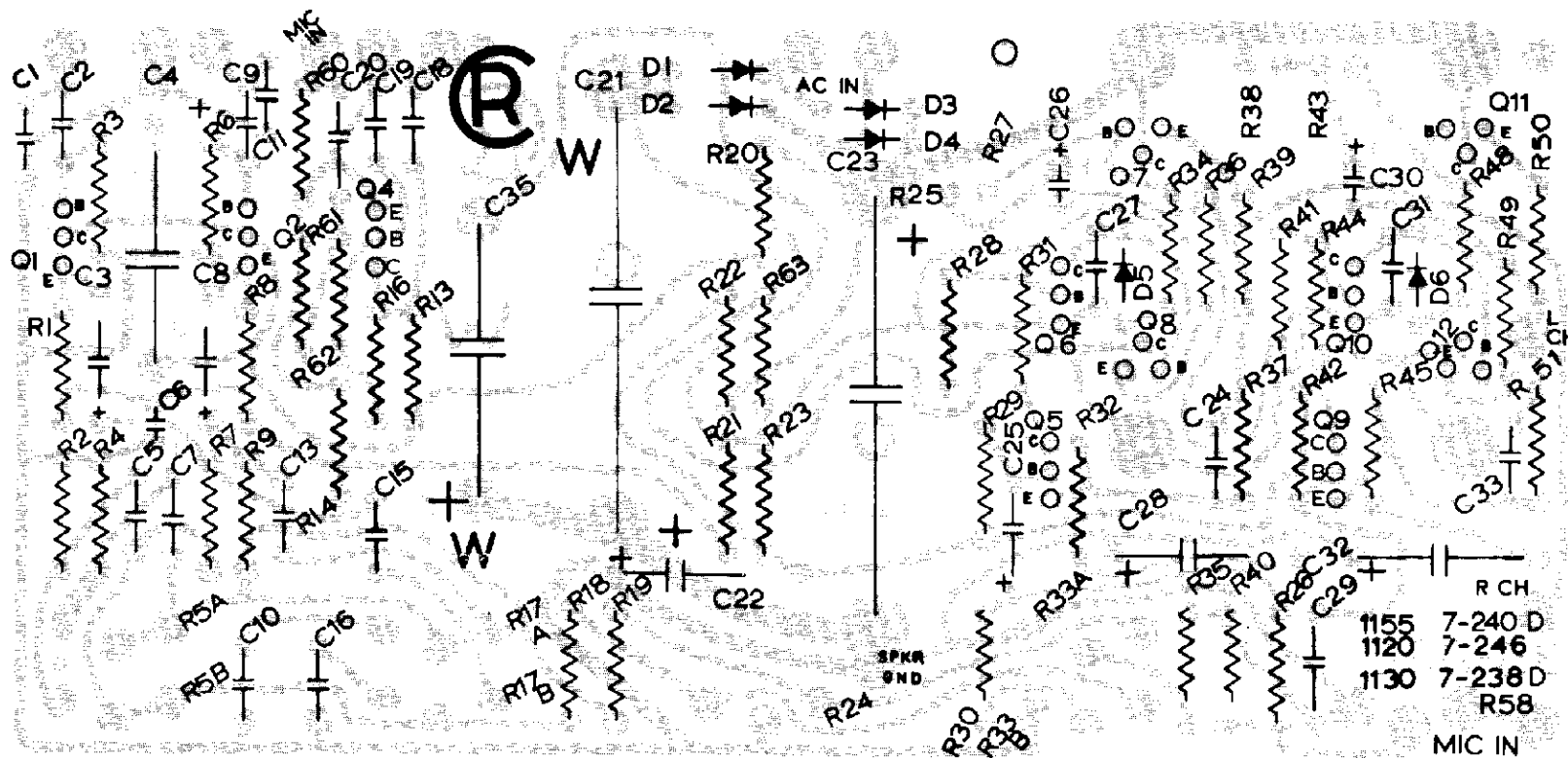
AMPLIFIER SWITCH 1A. SLOW-BLOW FUSE SOLDERED IN PLACE (25-103-6)



- NOTES: (UNLESS OTHERWISE SPECIFIED):
1. ALL RESISTORS RATED IN OHMS, $\pm 10\%$, 1/2 WATT.
 2. ALL CAPACITORS RATED IN MFD, $\pm 20\%$, 50V.
 3. ALL VOLTAGES $\pm 10\%$ TOLERANCE, MEASURED FROM CHASSIS WITH 100,000 Ω/V METER AND NO SIGNAL APPLIED.
 4. CALIFONE PART NOS. SHOWN: ()
 5. ARROWS ON CONTROLS INDICATE CLOCKWISE ROTATION.
 6. FOR 50HZ MOTOR ADD (-01) TO (30-XXX) 60HZ MOTOR PART NO. TO ORDER CORRECT 50HZ EQUIVALENT. EXAMPLE: (30-115) FOR 60HZ BECOMES (30-115-01) FOR 50HZ.

TRANSISTOR BASING DIAGRAMS
BOTTOM VIEWS





DESCRIPTION OF CHANGES: R64 and R65 were 100 ohms, 1/2 watt;
 C3 and C8 were 2 MFD; C25 and C9 were .47 MFD;
 R3 and R6 were 2.2M; added R66 thru R71.