



XG-SZ2

D

SERVICE MANUAL

COMPACT DISC STEREO
CASSETTE RECEIVER

BASIC TAPE MECHANISM: ZZM-2 APR1NC
BASIC CD MECHANISM: 3ZG-3 E8NC

- Replace this Service manual with "Revision Publishing" when it is issued.

aiwa

S/M Code No. 09-009-433-7T2

SIMPLE

DATA

製品を安全に修理(補修)するために

修理の前に「製品を安全に修理(補修)するために」をよくお読みの上、正しく修理を行ってください。
このサービスマニュアルでは、お客様が製品を安全に正しくお使いいただき、お客様や他の人々への危害や財産への損害を未然に防止するために、修理する場合必ず下記の項目をお守りください。

⚠警告

警告に示された次の内容を必ずお守りください。

もし守られないと、火災や感電、けがなどの重度の損害を負う原因となります。

1. ⚠安全規格部品注意文

製品の安全性を維持する為の重要部品で、安全上特別な規格で作られています。このマークの部品を交換する時は必ず指定の部品を使用してください。

2. 指定部品を使用すること。

セットの部品は難燃性や耐電圧など安全上の特性を持ったものとなっています。従って交換部品は、使用されていたものと同じ特性の部品を使用してください。特に回路図、部品表に⚠印で指定されている安全上重要な部品は必ず指定のものをご使用ください。

内部には高電圧の部分がありますので通電時の取り扱いに際しては注意してください。

5. 次の各項目は必ず修理前と同じ状態にすること。

- 1) ワイヤの半田付け状態(特にAC1次側の空間距離)
- 2) ワイヤの引き回しおよび束線状態等
- 3) ワイヤの種類
- 4) 各種絶縁物の取付状態

6. 部品の取り付けや配線の引き回しはもとどおりにすること。

ついたり、溶かしたりしないこと。

4. 感電に注意すること。

り、プリント基板から浮かしてとりつけた部品があります。また、内部配線は引き回しやクランパーによって発熱部品や高圧部品に接近しないよう配慮されていますのでこれらは必ずもとどおりにしてください。

PARTS LIST

! = Δ SAFTY PARTS
 C = Components marked

All components used on this model at the production line are shown in this service manual.

However, please note that not all components will be available as spare parts for after-sales service.

Components marked S and O are designated as spare parts for service and will be stocked at the spare parts centers.

Components marked X and R are not designated as spare parts for after sales service, and will not be stocked at the spare parts centers.

K NO. = Only use japanese.

! C	UNIT NAME	REF NO.	PARTS CODE	K NO.	DESCRIPTION	SUFFIX	MODEL NAME
O	AC	FC 0101	87-A90-505-080	0E	FUSE CLAMP, TP00351-51	SC1	CX-SNSZ2
O	AC	FC 0102	87-A90-505-080	0E	FUSE CLAMP, TP00351-51	SC1	CX-SNSZ2
O	AC	T 0101	87-A60-317-010	0E	TERMINAL, 1P MSC	SC1	CX-SNSZ2
O	AC	T 0102	87-A60-317-010	0E	TERMINAL, 1P MSC	SC1	CX-SNSZ2
O	ACCESSORY		87-043-115-010	1A	FEEDER-ANT, FM	SC1	CX-SNSZ2
O	ACCESSORY		87-A90-030-010	1B	ANT, LOOP AM-NC C	SC1	CX-SNSZ2
X	ACCESSORY		87-B30-274-010	0E	BAT, R6P ATC	SC1	CX-SNSZ2
O	ACCESSORY		8A-NEC-701-010	1E	RC UNIT, RC-AAS08	SC1	CX-SNSZ2
!	O APPEARANCE		87-B00-002-010	0E	BADGE, AIWA 30 ABS SIL	SC1	CX-SNSZ2
O	APPEARANCE		8A-NEC-001-010	1E	CABI, FR	SC1	CX-SNSZ2
O	APPEARANCE		8A-NEC-002-010	1B	BOX, CASS 1	SC1	CX-SNSZ2
O	APPEARANCE		8A-NEC-003-010	1A	BOX, CASS 2	SC1	CX-SNSZ2
O	APPEARANCE		8A-NEC-004-010	1A	PANEL, TRAY CD	SC1	CX-SNSZ2
O	APPEARANCE		8A-NEC-013-010	1B	PANEL, LEFT	SC1	CX-SNSZ2
O	APPEARANCE		8A-NEC-014-010	1B	PANEL, RIGHT	SC1	CX-SNSZ2
O	APPEARANCE		8A-NEC-015-010	1C	PANEL, TOP	SC1	CX-SNSZ2
O	APPEARANCE		8A-NEC-029-010	1C	CABI, REAR SC1	SC1	CX-SNSZ2
X	CD		M8-3ZG-38A-070	--	3ZG-3 E8NC	SC1	CX-SNSZ2
O	CD DRIVER	C 0371	87-010-221-080	0E	CAP, E 470-10 M SME	SC1	CX-SNSZ2
O	CD DRIVER	C 0372	87-010-759-080	0E	C-CAP, U 0.1-25 Z F	SC1	CX-SNSZ2
O	CD DRIVER	C 0373	87-010-544-080	0E	CAP, E 0.1-50 M 11L SME	SC1	CX-SNSZ2
O	CD DRIVER	C 0374	87-010-236-080	0E	CAP, E 1000-10 M SME	SC1	CX-SNSZ2
O	CD DRIVER	C 0375	87-010-759-080	0E	C-CAP, U 0.1-25 Z F	SC1	CX-SNSZ2
O	CD DRIVER	C 0376	87-010-263-080	0E	CAP, E 100-10 M 11L SME	SC1	CX-SNSZ2
O	CD DRIVER	C 0377	87-010-759-080	0E	C-CAP, U 0.1-25 Z F	SC1	CX-SNSZ2
O	CD DRIVER	C 0378	87-010-759-080	0E	C-CAP, U 0.1-25 Z F	SC1	CX-SNSZ2
O	CD DRIVER	C 0379	87-010-759-080	0E	C-CAP, U 0.1-25 Z F	SC1	CX-SNSZ2
O	CD DRIVER	C 0380	87-010-759-080	0E	C-CAP, U 0.1-25 Z F	SC1	CX-SNSZ2
O	CD DRIVER	C 0381	87-010-759-080	0E	C-CAP, U 0.1-25 Z F	SC1	CX-SNSZ2
O	CD DRIVER	C 0382	87-016-369-080	0E	C-CAP, S 0.033-25 K B GRM	SC1	CX-SNSZ2
O	CD DRIVER	C 0391	87-012-195-080	0E	C-CAP, U 100P-50 J CH	SC1	CX-SNSZ2
O	CD DRIVER	C 0392	87-012-195-080	0E	C-CAP, U 100P-50 J CH	SC1	CX-SNSZ2
O	CD DRIVER	C 0393	87-012-195-080	0E	C-CAP, U 100P-50 J CH	SC1	CX-SNSZ2
O	CD DRIVER	C 0394	87-012-195-080	0E	C-CAP, U 100P-50 J CH	SC1	CX-SNSZ2
O	CD DRIVER	C 0395	87-012-195-080	0E	C-CAP, U 100P-50 J CH	SC1	CX-SNSZ2
O	CD DRIVER	C 0396	87-012-195-080	0E	C-CAP, U 100P-50 J CH	SC1	CX-SNSZ2
!	O CD DRIVER	CN 0302	87-099-194-010	0E	CONN, 6P V BLK 6216	SC1	CX-SNSZ2
S	CD DRIVER	IC 0303	87-A21-722-010	1D	IC, LA6548D	SC1	CX-SNSZ2
S	CD DRIVER	Q 0306	87-026-609-080	0E	TR, KTA1266GR	SC1	CX-SNSZ2
X	CD DRIVER	R 0371	88-118-101-080	0E	C-RES, S 100-1/10W J	SC1	CX-SNSZ2
X	CD DRIVER	R 0372	88-128-229-080	0E	C-RES, 2.2-1/8W J	SC1	CX-SNSZ2
X	CD DRIVER	R 0373	88-121-561-080	0E	RES, 560-1/8W J	SC1	CX-SNSZ2
X	CD DRIVER	R 0375	88-128-100-080	0E	C-RES, 10-1/8W J	SC1	CX-SNSZ2
X	CD DRIVER	R 0376	88-128-100-080	0E	C-RES, 10-1/8W J	SC1	CX-SNSZ2
X	CD DRIVER	R 0377	88-118-102-080	0E	C-RES, S 1K-1/10W J	SC1	CX-SNSZ2
X	CD DRIVER	R 0378	88-118-683-080	0E	C-RES, S 68K-1/10W J	SC1	CX-SNSZ2
X	CD DRIVER	R 0379	88-118-000-080	0E	C-JUMPER, S	SC1	CX-SNSZ2
X	CD DRIVER	R 0380	88-118-683-080	0E	C-RES, S 68K-1/10W J	SC1	CX-SNSZ2
X	CD DRIVER	R 0381	88-128-100-080	0E	C-RES, 10-1/8W J	SC1	CX-SNSZ2
X	CD DRIVER	R 0382	88-128-100-080	0E	C-RES, 10-1/8W J	SC1	CX-SNSZ2
X	CD DRIVER	R 0383	88-118-000-080	0E	C-JUMPER, S	SC1	CX-SNSZ2
X	CD DRIVER	R 0384	88-118-683-080	0E	C-RES, S 68K-1/10W J	SC1	CX-SNSZ2
X	CD DRIVER	R 0385	88-118-103-080	0E	C-RES, S 10K-1/10W J	SC1	CX-SNSZ2
X	CD DRIVER	R 0386	88-118-101-080	0E	C-RES, S 100-1/10W J	SC1	CX-SNSZ2
X	CD DRIVER	R 0387	88-118-102-080	0E	C-RES, S 1K-1/10W J	SC1	CX-SNSZ2
X	CD DRIVER	R 0388	88-118-101-080	0E	C-RES, S 100-1/10W J	SC1	CX-SNSZ2
X	CD DRIVER	R 0389	88-118-102-080	0E	C-RES, S 1K-1/10W J	SC1	CX-SNSZ2
X	CD DRIVER	R 0390	88-118-101-080	0E	C-RES, S 100-1/10W J	SC1	CX-SNSZ2
X	CD DRIVER	R 0391	88-118-102-080	0E	C-RES, S 1K-1/10W J	SC1	CX-SNSZ2
X	CD DRIVER	R 0392	88-118-101-080	0E	C-RES, S 100-1/10W J	SC1	CX-SNSZ2
X	CD DRIVER	R 0393	88-118-102-080	0E	C-RES, S 1K-1/10W J	SC1	CX-SNSZ2
X	CD DRIVER	R 0394	88-118-101-080	0E	C-RES, S 100-1/10W J	SC1	CX-SNSZ2
X	CD DRIVER	R 0395	88-118-222-080	0E	C-RES, S 2.2K-1/10W J	SC1	CX-SNSZ2
X	CD DRIVER	R 0396	88-118-101-080	0E	C-RES, S 100-1/10W J	SC1	CX-SNSZ2
X	CD DRIVER	R 0397	88-118-102-080	0E	C-RES, S 1K-1/10W J	SC1	CX-SNSZ2
O	CD DSP	C 0331	87-A10-504-080	0E	C-CAP, U 0.047-16 K B	SC1	CX-SNSZ2
O	CD DSP	C 0332	87-010-401-080	0E	CAP, E 1-50 M 11L SME	SC1	CX-SNSZ2
O	CD DSP	C 0333	87-010-759-080	0E	C-CAP, U 0.1-25 Z F	SC1	CX-SNSZ2
O	CD DSP	C 0334	87-010-759-080	0E	C-CAP, U 0.1-25 Z F	SC1	CX-SNSZ2

PARTS LIST

! = Δ SAFTY PARTS
 C = Components marked

All components used on this model at the production line are shown in this service manual.

However, please note that not all components will be available as spare parts for after-sales service.

Components marked S and O are designated as spare parts for service and will be stocked at the spare parts centers.

Components marked X and R are not designated as spare parts for after sales service, and will not be stocked at the spare parts centers.

K NO. = Only use Japanese.

! C	UNIT NAME	REF NO.	PARTS CODE	K NO.	DESCRIPTION	SUFFIX	MODEL NAME	
O	CD DSP	C	0335	87-010-260-080	0E	CAP,E 47-25 M 11L SME	SC1	CX-SNSZ2
O	CD DSP	C	0336	87-012-195-080	0E	C-CAP,U 100P-50 J CH	SC1	CX-SNSZ2
O	CD DSP	C	0337	87-010-759-080	0E	C-CAP,U 0.1-25 Z F	SC1	CX-SNSZ2
O	CD DSP	C	0338	87-012-282-080	0E	C-CAP,U 4700P-50 K B	SC1	CX-SNSZ2
O	CD DSP	C	0339	87-A10-504-080	0E	C-CAP,U 0.047-16 K B	SC1	CX-SNSZ2
O	CD DSP	C	0340	87-012-195-080	0E	C-CAP,U 100P-50 J CH	SC1	CX-SNSZ2
O	CD DSP	C	0341	87-010-260-080	0E	CAP,E 47-25 M 11L SME	SC1	CX-SNSZ2
O	CD DSP	C	0342	87-012-286-080	0E	C-CAP,U 0.01-25 K B	SC1	CX-SNSZ2
O	CD DSP	C	0344	87-010-260-080	0E	CAP,E 47-25 M 11L SME	SC1	CX-SNSZ2
O	CD DSP	C	0345	87-012-286-080	0E	C-CAP,U 0.01-25 K B	SC1	CX-SNSZ2
O	CD DSP	C	0346	87-010-248-080	0E	CAP,E 220-10 M 11L SME	SC1	CX-SNSZ2
O	CD DSP	C	0347	87-012-286-080	0E	C-CAP,U 0.01-25 K B	SC1	CX-SNSZ2
O	CD DSP	C	0348	87-010-263-080	0E	CAP,E 100-10 M 11L SME	SC1	CX-SNSZ2
O	CD DSP	C	0349	87-012-286-080	0E	C-CAP,U 0.01-25 K B	SC1	CX-SNSZ2
O	CD DSP	C	0350	87-012-176-080	0E	C-CAP,U 15P-50 J CH	SC1	CX-SNSZ2
O	CD DSP	C	0351	87-012-176-080	0E	C-CAP,U 15P-50 J CH	SC1	CX-SNSZ2
O	CD DSP	C	0352	87-010-404-080	0E	CAP,E 4.7-50 M 11L SME	SC1	CX-SNSZ2
O	CD DSP	C	0353	87-012-286-080	0E	C-CAP,U 0.01-25 K B	SC1	CX-SNSZ2
O	CD DSP	C	0354	87-010-401-080	0E	CAP,E 1-50 M 11L SME	SC1	CX-SNSZ2
O	CD DSP	C	0355	87-010-759-080	0E	C-CAP,U 0.1-25 Z F	SC1	CX-SNSZ2
O	CD DSP	C	0356	87-010-759-080	0E	C-CAP,U 0.1-25 Z F	SC1	CX-SNSZ2
O	CD DSP	C	0357	87-010-759-080	0E	C-CAP,U 0.1-25 Z F	SC1	CX-SNSZ2
O	CD DSP	C	0358	87-010-405-080	0E	CAP,E 10-50 M 11L SME	SC1	CX-SNSZ2
O	CD DSP	C	0359	87-012-195-080	0E	C-CAP,U 100P-50 J CH	SC1	CX-SNSZ2
O	CD DSP	C	0360	87-012-349-080	0E	C-CAP,S 1000P-50 J CH GRM	SC1	CX-SNSZ2
O	CD DSP	C	0361	87-010-544-080	0E	CAP,E 0.1-50 M 11L SME	SC1	CX-SNSZ2
O	CD DSP	C	0362	87-010-544-080	0E	CAP,E 0.1-50 M 11L SME	SC1	CX-SNSZ2
O	CD DSP	C	0363	87-010-759-080	0E	C-CAP,U 0.1-25 Z F	SC1	CX-SNSZ2
S	CD DSP	D	0302	87-A40-747-080	0E	ZENER,UZ5.1BSB	SC1	CX-SNSZ2
S	CD DSP	D	0303	87-A40-743-080	0E	ZENER,UZ4.3BSA	SC1	CX-SNSZ2
S	CD DSP	IC	0302	87-A21-591-010	2A	C-IC,LC78641NE-D	SC1	CX-SNSZ2
S	CD DSP	Q	0305	87-A30-076-080	0E	C-TR,2SC3052F	SC1	CX-SNSZ2
X	CD DSP	R	0331	88-118-681-080	0E	C-RES,S 680-1/10W J	SC1	CX-SNSZ2
X	CD DSP	R	0332	88-118-681-080	0E	C-RES,S 680-1/10W J	SC1	CX-SNSZ2
X	CD DSP	R	0333	88-118-395-080	0E	C-RES,S 3.9M-1/10W J	SC1	CX-SNSZ2
X	CD DSP	R	0334	88-118-123-080	0E	C-RES,S 12K-1/10W J	SC1	CX-SNSZ2
X	CD DSP	R	0335	88-118-122-080	0E	C-RES,S 1.2K-1/10W J	SC1	CX-SNSZ2
X	CD DSP	R	0336	88-118-272-080	0E	C-RES,S 2.7K-1/10W J	SC1	CX-SNSZ2
X	CD DSP	R	0337	88-100-000-010	0E	PLATING-JW, 0.58 SN95	SC1	CX-SNSZ2
X	CD DSP	R	0338	88-118-331-080	0E	C-RES,S 330-1/10W J	SC1	CX-SNSZ2
X	CD DSP	R	0339	88-118-103-080	0E	C-RES,S 10K-1/10W J	SC1	CX-SNSZ2
X	CD DSP	R	0340	88-100-000-010	0E	PLATING-JW, 0.58 SN95	SC1	CX-SNSZ2
X	CD DSP	R	0341	88-118-000-080	0E	C-JUMPER,S	SC1	CX-SNSZ2
X	CD DSP	R	0342	88-118-104-080	0E	C-RES,S 100K-1/10W J	SC1	CX-SNSZ2
X	CD DSP	R	0343	88-118-104-080	0E	C-RES,S 100K-1/10W J	SC1	CX-SNSZ2
X	CD DSP	R	0344	88-128-104-080	0E	C-RES, 100K-1/8W J	SC1	CX-SNSZ2
X	CD DSP	R	0345	88-118-473-080	0E	C-RES,S 47K-1/10W J	SC1	CX-SNSZ2
X	CD DSP	R	0346	88-118-000-080	0E	C-JUMPER,S	SC1	CX-SNSZ2
X	CD DSP	R	0347	88-118-000-080	0E	C-JUMPER,S	SC1	CX-SNSZ2
X	CD DSP	R	0348	88-118-105-080	0E	C-RES,S 1M-1/10W J	SC1	CX-SNSZ2
X	CD DSP	R	0349	88-100-000-010	0E	PLATING-JW, 0.58 SN95	SC1	CX-SNSZ2
X	CD DSP	R	0350	88-100-000-010	0E	PLATING-JW, 0.58 SN95	SC1	CX-SNSZ2
X	CD DSP	R	0351	88-100-000-010	0E	PLATING-JW, 0.58 SN95	SC1	CX-SNSZ2
X	CD DSP	R	0353	88-128-470-080	0E	C-RES, 47-1/8W J	SC1	CX-SNSZ2
X	CD DSP	R	0354	88-128-152-080	0E	C-RES, 1.5K-1/8W J	SC1	CX-SNSZ2
X	CD DSP	R	0355	88-128-152-080	0E	C-RES, 1.5K-1/8W J	SC1	CX-SNSZ2
X	CD DSP	R	0356	88-128-100-080	0E	C-RES, 10-1/8W J	SC1	CX-SNSZ2
X	CD DSP	R	0357	88-118-101-080	0E	C-RES,S 100-1/10W J	SC1	CX-SNSZ2
X	CD DSP	R	0358	88-118-102-080	0E	C-RES,S 1K-1/10W J	SC1	CX-SNSZ2
X	CD DSP	R	0359	88-118-101-080	0E	C-RES,S 100-1/10W J	SC1	CX-SNSZ2
X	CD DSP	R	0360	88-128-152-080	0E	C-RES, 1.5K-1/8W J	SC1	CX-SNSZ2
X	CD DSP	R	0361	88-128-152-080	0E	C-RES, 1.5K-1/8W J	SC1	CX-SNSZ2
X	CD DSP	R	0363	88-118-222-080	0E	C-RES,S 2.2K-1/10W J	SC1	CX-SNSZ2
X	CD DSP	R	0364	88-118-222-080	0E	C-RES,S 2.2K-1/10W J	SC1	CX-SNSZ2
X	CD DSP	R	0365	88-118-473-080	0E	C-RES,S 47K-1/10W J	SC1	CX-SNSZ2
X	CD DSP	R	0366	88-118-683-080	0E	C-RES,S 68K-1/10W J	SC1	CX-SNSZ2
O	CD DSP	X	0301	87-A70-046-010	1B	VIB,XTAL 16.934MHZ	SC1	CX-SNSZ2
O	CD RF AMP	C	0301	87-010-374-080	0E	CAP,E 47-10 M 11L SME	SC1	CX-SNSZ2
O	CD RF AMP	C	0302	87-010-759-080	0E	C-CAP,U 0.1-25 Z F	SC1	CX-SNSZ2
O	CD RF AMP	C	0303	87-010-260-080	0E	CAP,E 47-25 M 11L SME	SC1	CX-SNSZ2

PARTS LIST

! = Δ SAFTY PARTS
 C = Components marked

All components used on this model at the production line are shown in this service manual.

However, please note that not all components will be available as spare parts for after-sales service.

Components marked S and O are designated as spare parts for service and will be stocked at the spare parts centers.

Components marked X and R are not designated as spare parts for after sales service, and will not be stocked at the spare parts centers.

K NO. = Only use japanese.

! C	UNIT NAME	REF NO.	PARTS CODE	K NO.	DESCRIPTION	SUFFIX	MODEL NAME	
O	CD RF AMP	C	0304	87-010-260-080	0E	CAP,E 47-25 M 11L SME	SC1	CX-SNSZ2
O	CD RF AMP	C	0305	87-012-286-080	0E	C-CAP,U 0.01-25 K B	SC1	CX-SNSZ2
O	CD RF AMP	C	0306	87-010-405-080	0E	CAP,E 10-50 M 11L SME	SC1	CX-SNSZ2
O	CD RF AMP	C	0307	87-010-263-080	0E	CAP,E 100-10 M 11L SME	SC1	CX-SNSZ2
O	CD RF AMP	C	0308	87-012-349-080	0E	C-CAP,S 1000P-50 J CH GRM	SC1	CX-SNSZ2
O	CD RF AMP	C	0309	87-010-546-080	0E	CAP,E 0.33-50 M 11L SME	SC1	CX-SNSZ2
O	CD RF AMP	C	0310	87-010-401-080	0E	CAP,E 1-50 M 11L SME	SC1	CX-SNSZ2
O	CD RF AMP	C	0311	87-012-193-080	0E	C-CAP,U 82P-50 J CH	SC1	CX-SNSZ2
O	CD RF AMP	C	0312	87-012-286-080	0E	C-CAP,U 0.01-25 K B	SC1	CX-SNSZ2
O	CD RF AMP	C	0313	87-010-260-080	0E	CAP,E 47-25 M 11L SME	SC1	CX-SNSZ2
!	O CD RF AMP	CN	0301	87-A60-424-010	0E	CONN,16P V TOC-B	SC1	CX-SNSZ2
S	CD RF AMP	IC	0301	87-A21-381-040	1E	C-IC,LA9235M	SC1	CX-SNSZ2
S	CD RF AMP	Q	0301	87-026-609-080	0E	TR,KTA1266GR	SC1	CX-SNSZ2
S	CD RF AMP	Q	0302	87-A30-076-080	0E	C-TR,2SC3052F	SC1	CX-SNSZ2
S	CD RF AMP	Q	0303	87-A30-076-080	0E	C-TR,2SC3052F	SC1	CX-SNSZ2
S	CD RF AMP	Q	0304	87-A30-076-080	0E	C-TR,2SC3052F	SC1	CX-SNSZ2
X	CD RF AMP	R	0301	88-118-223-080	0E	C-RES,S 22K-1/10W J	SC1	CX-SNSZ2
X	CD RF AMP	R	0302	88-118-223-080	0E	C-RES,S 22K-1/10W J	SC1	CX-SNSZ2
X	CD RF AMP	R	0303	88-118-223-080	0E	C-RES,S 22K-1/10W J	SC1	CX-SNSZ2
X	CD RF AMP	R	0304	88-118-223-080	0E	C-RES,S 22K-1/10W J	SC1	CX-SNSZ2
X	CD RF AMP	R	0305	88-118-104-080	0E	C-RES,S 100K-1/10W J	SC1	CX-SNSZ2
X	CD RF AMP	R	0306	88-118-104-080	0E	C-RES,S 100K-1/10W J	SC1	CX-SNSZ2
X	CD RF AMP	R	0307	88-118-820-080	0E	C-RES,S 82-1/10W J	SC1	CX-SNSZ2
X	CD RF AMP	R	0308	88-121-479-080	0E	RES,4.7-1/8W J	SC1	CX-SNSZ2
X	CD RF AMP	R	0309	88-118-000-080	0E	C-JUMPER,S	SC1	CX-SNSZ2
X	CD RF AMP	R	0310	88-118-472-080	0E	C-RES,S 4.7K-1/10W J	SC1	CX-SNSZ2
X	CD RF AMP	R	0311	88-118-472-080	0E	C-RES,S 4.7K-1/10W J	SC1	CX-SNSZ2
X	CD RF AMP	R	0312	88-118-272-080	0E	C-RES,S 2.7K-1/10W J	SC1	CX-SNSZ2
X	CD RF AMP	R	0313	88-118-122-080	0E	C-RES,S 1.2K-1/10W J	SC1	CX-SNSZ2
X	CD RF AMP	R	0314	88-118-472-080	0E	C-RES,S 4.7K-1/10W J	SC1	CX-SNSZ2
X	CD RF AMP	R	0315	88-118-472-080	0E	C-RES,S 4.7K-1/10W J	SC1	CX-SNSZ2
X	CD RF AMP	R	0316	88-118-153-080	0E	C-RES,S 15K-1/10W J	SC1	CX-SNSZ2
X	CD RF AMP	R	0317	88-118-103-080	0E	C-RES,S 10K-1/10W J	SC1	CX-SNSZ2
X	CD RF AMP	R	0318	88-118-123-080	0E	C-RES,S 12K-1/10W J	SC1	CX-SNSZ2
X	CD RF AMP	R	0319	88-118-122-080	0E	C-RES,S 1.2K-1/10W J	SC1	CX-SNSZ2
X	CD RF AMP	R	0320	88-118-561-080	0E	C-RES,S 560-1/10W J	SC1	CX-SNSZ2
X	CD RF AMP	R	0321	88-118-122-080	0E	C-RES,S 1.2K-1/10W J	SC1	CX-SNSZ2
X	CD RF AMP	R	0322	88-118-472-080	0E	C-RES,S 4.7K-1/10W J	SC1	CX-SNSZ2
X	CD RF AMP	R	0323	88-118-472-080	0E	C-RES,S 4.7K-1/10W J	SC1	CX-SNSZ2
!	X ELECTRICAL			87-069-033-010	0E	CABLE,TIE	SC1	CX-SNSZ2
!	X ELECTRICAL			87-069-033-010	0E	CABLE,TIE	SC1	CX-SNSZ2
!	X ELECTRICAL			87-830-712-010	0E	TUBE,UL 7-120	SC1	CX-SNSZ2
X	ELECTRICAL			87-A91-984-010	--	LBL,FUSE 800MA T L	SC1	CX-SNSZ2
O	ELECTRICAL			88-905-151-110	--	FF-CABLE, 5P 1.25 150MM	SC1	CX-SNSZ2
O	ELECTRICAL			88-906-151-110	0E	FF-CABLE, 6P 1.25	SC1	CX-SNSZ2
O	ELECTRICAL			8A-NEC-603-010	0E	FF-CABLE,16P -1.0	SC1	CX-SNSZ2
!	O ELECTRICAL	F	0101	87-035-221-010	1A	FUSE,800MA 250V T 218	SC1	CX-SNSZ2
!	O ELECTRICAL	PT	0001	8A-NEC-615-010	--	PT,ANE-C D	SC1	CX-SNSZ2
!	O ELECTRICAL	W	0001	87-A80-156-010	1B	AC CORD ASSY,D BLK CC	SC1	CX-SNSZ2
!	O FRCB MECHA	*		8A-NFA-208-010	0E	GUIDE,FL 100-25 ANFA	SC1	CX-SNSZ2
O	FUNC/E.VR	C	0605	87-012-275-080	0E	C-CAP,U 1200P-50 K B GRM	SC1	CX-SNSZ2
O	FUNC/E.VR	C	0606	87-012-275-080	0E	C-CAP,U 1200P-50 K B GRM	SC1	CX-SNSZ2
O	FUNC/E.VR	C	0609	87-010-785-080	0E	C-CAP,U 0.015-25 K B GRM	SC1	CX-SNSZ2
O	FUNC/E.VR	C	0610	87-010-785-080	0E	C-CAP,U 0.015-25 K B GRM	SC1	CX-SNSZ2
O	FUNC/E.VR	C	0611	87-010-545-080	0E	CAP,E 0.22-50 M 11L SME	SC1	CX-SNSZ2
O	FUNC/E.VR	C	0612	87-010-545-080	0E	CAP,E 0.22-50 M 11L SME	SC1	CX-SNSZ2
O	FUNC/E.VR	C	0613	87-010-545-080	0E	CAP,E 0.22-50 M 11L SME	SC1	CX-SNSZ2
O	FUNC/E.VR	C	0614	87-010-545-080	0E	CAP,E 0.22-50 M 11L SME	SC1	CX-SNSZ2
O	FUNC/E.VR	C	0615	87-012-172-080	0E	C-CAP,U 10P-50 D CH	SC1	CX-SNSZ2
O	FUNC/E.VR	C	0616	87-010-248-080	0E	CAP,E 220-10 M 11L SME	SC1	CX-SNSZ2
O	FUNC/E.VR	C	0617	87-010-221-080	0E	CAP,E 470-10 M SME	SC1	CX-SNSZ2
O	FUNC/E.VR	C	0618	87-010-405-080	0E	CAP,E 10-50 M 11L SME	SC1	CX-SNSZ2
O	FUNC/E.VR	C	0630	87-A10-248-080	0E	C-CAP,U 0.1-16 K BR	SC1	CX-SNSZ2
X	FUNC/E.VR	C	0678	88-118-000-080	0E	C-JUMPER,S	SC1	CX-SNSZ2
S	FUNC/E.VR	D	0601	87-A40-739-080	0E	ZENER,UZ2.7BSA	SC1	CX-SNSZ2
S	FUNC/E.VR	D	0602	87-A40-739-080	0E	ZENER,UZ2.7BSA	SC1	CX-SNSZ2
S	FUNC/E.VR	IC	0601	87-A21-443-040	1C	C-IC,M62495AFP	SC1	CX-SNSZ2
O	FUNC/E.VR	J	0602	87-A60-881-010	0E	JACK,PIN 2P MSP 242V05 PBSN	SC1	CX-SNSZ2
X	FUNC/E.VR	JR	0601	88-118-000-080	0E	C-JUMPER,S	SC1	CX-SNSZ2
S	FUNC/E.VR	Q	0605	87-A30-090-080	0E	FET,2SK2541	SC1	CX-SNSZ2

PARTS LIST

! = Δ SAFTY PARTS
 C = Components marked

All components used on this model at the production line are shown in this service manual.

However, please note that not all components will be available as spare parts for after-sales service.

Components marked S and O are designated as spare parts for service and will be stocked at the spare parts centers.

Components marked X and R are not designated as spare parts for after sales service, and will not be stocked at the spare parts centers.

K NO. = Only use japanese.

! C	UNIT NAME	REF NO.	PARTS CODE	K NO.	DESCRIPTION	SUFFIX	MODEL NAME
S	FUNC/E.VR	Q 0606	87-A30-090-080	0E	FET,2SK2541	SC1	CX-SNSZ2
S	FUNC/E.VR	Q 0607	87-A30-076-080	0E	C-TR,2SC3052F	SC1	CX-SNSZ2
X	FUNC/E.VR	R 0590	88-121-472-080	0E	RES,4.7K-1/8W J	SC1	CX-SNSZ2
X	FUNC/E.VR	R 0599	88-121-472-080	0E	RES,4.7K-1/8W J	SC1	CX-SNSZ2
X	FUNC/E.VR	R 0601	88-118-102-080	0E	C-RES,S 1K-1/10W J	SC1	CX-SNSZ2
X	FUNC/E.VR	R 0602	88-121-102-080	0E	RES,1K-1/8W J	SC1	CX-SNSZ2
X	FUNC/E.VR	R 0603	88-118-682-080	0E	C-RES,S 6.8K-1/10W J	SC1	CX-SNSZ2
X	FUNC/E.VR	R 0604	88-118-682-080	0E	C-RES,S 6.8K-1/10W J	SC1	CX-SNSZ2
X	FUNC/E.VR	R 0605	88-121-153-080	0E	RES,15K-1/8W J	SC1	CX-SNSZ2
X	FUNC/E.VR	R 0606	88-118-153-080	0E	C-RES,S 15K-1/10W J	SC1	CX-SNSZ2
X	FUNC/E.VR	R 0607	88-118-103-080	0E	C-RES,S 10K-1/10W J	SC1	CX-SNSZ2
X	FUNC/E.VR	R 0608	88-118-103-080	0E	C-RES,S 10K-1/10W J	SC1	CX-SNSZ2
X	FUNC/E.VR	R 0609	88-121-822-080	0E	RES,8.2K-1/8W J	SC1	CX-SNSZ2
X	FUNC/E.VR	R 0610	88-121-822-080	0E	RES,8.2K-1/8W J	SC1	CX-SNSZ2
X	FUNC/E.VR	R 0611	88-118-183-080	0E	C-RES,S 18K-1/10W J	SC1	CX-SNSZ2
X	FUNC/E.VR	R 0612	88-118-183-080	0E	C-RES,S 18K-1/10W J	SC1	CX-SNSZ2
X	FUNC/E.VR	R 0613	88-121-822-080	0E	RES,8.2K-1/8W J	SC1	CX-SNSZ2
X	FUNC/E.VR	R 0614	88-121-822-080	0E	RES,8.2K-1/8W J	SC1	CX-SNSZ2
X	FUNC/E.VR	R 0615	88-118-123-080	0E	C-RES,S 12K-1/10W J	SC1	CX-SNSZ2
X	FUNC/E.VR	R 0616	88-118-123-080	0E	C-RES,S 12K-1/10W J	SC1	CX-SNSZ2
X	FUNC/E.VR	R 0619	88-118-473-080	0E	C-RES,S 47K-1/10W J	SC1	CX-SNSZ2
X	FUNC/E.VR	R 0620	88-118-473-080	0E	C-RES,S 47K-1/10W J	SC1	CX-SNSZ2
X	FUNC/E.VR	R 0621	88-118-334-080	0E	C-RES,S 330K-1/10W J	SC1	CX-SNSZ2
X	FUNC/E.VR	R 0622	88-121-334-080	0E	RES,330K-1/8W J	SC1	CX-SNSZ2
X	FUNC/E.VR	R 0625	88-121-472-080	0E	RES,4.7K-1/8W J	SC1	CX-SNSZ2
X	FUNC/E.VR	R 0626	88-118-103-080	0E	C-RES,S 10K-1/10W J	SC1	CX-SNSZ2
X	FUNC/E.VR	R 0627	88-118-123-080	0E	C-RES,S 12K-1/10W J	SC1	CX-SNSZ2
X	FUNC/E.VR	R 0631	88-118-104-080	0E	C-RES,S 100K-1/10W J	SC1	CX-SNSZ2
X	FUNC/E.VR	R 0632	88-118-103-080	0E	C-RES,S 10K-1/10W J	SC1	CX-SNSZ2
X	FUNC/E.VR	R 0637	88-118-152-080	0E	C-RES,S 1.5K-1/10W J	SC1	CX-SNSZ2
X	FUNC/E.VR	R 0638	88-118-152-080	0E	C-RES,S 1.5K-1/10W J	SC1	CX-SNSZ2
X	FUNC/E.VR	R 0641	88-118-273-080	0E	C-RES,S 27K-1/10W J	SC1	CX-SNSZ2
X	FUNC/E.VR	R 0642	88-118-273-080	0E	C-RES,S 27K-1/10W J	SC1	CX-SNSZ2
X	FUNC/E.VR	R 0649	88-118-101-080	0E	C-RES,S 100-1/10W J	SC1	CX-SNSZ2
X	FUNC/E.VR	R 0650	88-118-101-080	0E	C-RES,S 100-1/10W J	SC1	CX-SNSZ2
X	FUNC/E.VR	R 0653	88-118-000-080	0E	C-JUMPER,S	SC1	CX-SNSZ2
X	FUNC/E.VR	R 0654	88-118-000-080	0E	C-JUMPER,S	SC1	CX-SNSZ2
X	FUNC/E.VR	R 0661	88-118-223-080	0E	C-RES,S 22K-1/10W J	SC1	CX-SNSZ2
X	FUNC/E.VR	R 0662	88-118-223-080	0E	C-RES,S 22K-1/10W J	SC1	CX-SNSZ2
O	KNOB		8A-NEC-008-010	1A	KEY,POWER	SC1	CX-SNSZ2
O	KNOB		8A-NEC-009-010	1A	KEY,OPEN/CLOSE	SC1	CX-SNSZ2
O	KNOB		8A-NEC-010-010	1A	KEY,CASS 1	SC1	CX-SNSZ2
O	KNOB		8A-NEC-011-010	1A	KEY,CASS 2	SC1	CX-SNSZ2
X	LBL,POP		8A-NEC-976-010	--	LBL,POP D1	SC1	CX-SNSZ2
X	LBL,POP		8A-NEC-977-010	--	LBL,POP D2	SC1	CX-SNSZ2
O	MACB MECHA		87-067-001-010	0E	S-SCREW,BVWWST2+3-12 W/O SLOT	SC1	CX-SNSZ2
O	MACB MECHA		87-067-579-010	0E	BVT2+3-8 W/O SLOT	SC1	CX-SNSZ2
O	MACB MECHA		87-NF4-224-010	0E	S-SCREW,IT3B+3-8 CU	SC1	CX-SNSZ2
X	MACB MECHA		8A-NEC-202-110	1A	HT-SINK,TR LOW	SC1	CX-SNSZ2
O	MECHANICAL		8A-NEC-205-010	1C	CABI,BOTTOM	SC1	CX-SNSZ2
O	MICON	C 0201	87-010-401-040	0E	CAP,E 1-50 M 11L SME	SC1	CX-SNSZ2
O	MICON	C 0202	87-010-759-080	0E	C-CAP,U 0.1-25 Z F	SC1	CX-SNSZ2
O	MICON	C 0203	87-010-260-040	0E	CAP,E 47-25 M 11L SME	SC1	CX-SNSZ2
O	MICON	C 0204	87-016-251-040	0E	CAP,E 220-16 M SMG	SC1	CX-SNSZ2
O	MICON	C 0500	87-010-759-080	0E	C-CAP,U 0.1-25 Z F	SC1	CX-SNSZ2
O	MICON	C 0501	87-010-406-040	0E	CAP,E 22-50 M 11L SME	SC1	CX-SNSZ2
O	MICON	C 0505	87-010-829-080	0E	C-CAP,U 0.047-16 Z F	SC1	CX-SNSZ2
O	MICON	C 0506	87-010-263-040	0E	CAP,E 100-10 M 11L SME	SC1	CX-SNSZ2
O	MICON	C 0507	87-010-246-040	0E	CAP,E 47-35 M 11L SME	SC1	CX-SNSZ2
O	MICON	C 0508	87-010-192-080	0E	C-CAP,S 0.022-50 Z F C2012	SC1	CX-SNSZ2
O	MICON	C 0509	87-010-404-040	0E	CAP,E 4.7-50 M 11L SME	SC1	CX-SNSZ2
O	MICON	C 0510	87-010-404-040	0E	CAP,E 4.7-50 M 11L SME	SC1	CX-SNSZ2
O	MICON	C 0511	87-010-759-080	0E	C-CAP,U 0.1-25 Z F	SC1	CX-SNSZ2
O	MICON	C 0512	87-010-263-040	0E	CAP,E 100-10 M 11L SME	SC1	CX-SNSZ2
O	MICON	C 0514	87-012-274-080	0E	C-CAP,U 1000P-50 K B	SC1	CX-SNSZ2
O	MICON	C 0515	87-012-274-080	0E	C-CAP,U 1000P-50 K B	SC1	CX-SNSZ2
O	MICON	C 0517	87-010-759-080	0E	C-CAP,U 0.1-25 Z F	SC1	CX-SNSZ2
O	MICON	C 0518	87-012-268-080	0E	C-CAP,U 330P-50 K B GRM	SC1	CX-SNSZ2
O	MICON	C 0523	87-010-248-040	0E	CAP,E 220-10 M 11L SME	SC1	CX-SNSZ2
O	MICON	C 0524	87-010-192-080	0E	C-CAP,S 0.022-50 Z F C2012	SC1	CX-SNSZ2

PARTS LIST

! = Δ SAFTY PARTS
 C = Components marked

All components used on this model at the production line are shown in this service manual.

However, please note that not all components will be available as spare parts for after-sales service.

Components marked S and O are designated as spare parts for service and will be stocked at the spare parts centers.

Components marked X and R are not designated as spare parts for after sales service, and will not be stocked at the spare parts centers.

K NO. = Only use Japanese.

! C	UNIT NAME	REF NO.	PARTS CODE	K NO.	DESCRIPTION	SUFFIX	MODEL NAME	
O	MICON	C	0525	87-010-401-040	0E	CAP,E 1-50 M 11L SME	SC1	CX-SNSZ2
O	MICON	C	0526	87-012-172-080	0E	C-CAP,U 10P-50 D CH	SC1	CX-SNSZ2
O	MICON	C	0527	87-012-274-080	0E	C-CAP,U 1000P-50 K B	SC1	CX-SNSZ2
O	MICON	C	0528	87-010-175-080	0E	C-CAP,S 560P-50 J SL	SC1	CX-SNSZ2
O	MICON	C	0530	87-012-195-080	0E	C-CAP,U 100P-50 J CH	SC1	CX-SNSZ2
O	MICON	C	0531	87-012-195-080	0E	C-CAP,U 100P-50 J CH	SC1	CX-SNSZ2
O	MICON	C	0532	87-012-195-080	0E	C-CAP,U 100P-50 J CH	SC1	CX-SNSZ2
O	MICON	C	0533	87-012-195-080	0E	C-CAP,U 100P-50 J CH	SC1	CX-SNSZ2
O	MICON	C	0534	87-012-195-080	0E	C-CAP,U 100P-50 J CH	SC1	CX-SNSZ2
O	MICON	C	0535	87-012-195-080	0E	C-CAP,U 100P-50 J CH	SC1	CX-SNSZ2
O	MICON	C	0536	87-012-195-080	0E	C-CAP,U 100P-50 J CH	SC1	CX-SNSZ2
O	MICON	C	0537	87-012-195-080	0E	C-CAP,U 100P-50 J CH	SC1	CX-SNSZ2
O	MICON	C	0538	87-012-195-080	0E	C-CAP,U 100P-50 J CH	SC1	CX-SNSZ2
O	MICON	C	0539	87-012-199-080	0E	C-CAP,U 220P-50 J CH	SC1	CX-SNSZ2
O	MICON	C	0540	87-010-759-080	0E	C-CAP,U 0.1-25 Z F	SC1	CX-SNSZ2
O	MICON	C	0541	87-016-459-040	0E	CAP,E 470-10 M SMG	SC1	CX-SNSZ2
O	MICON	C	0590	87-010-384-040	0E	CAP,E 100-25 M 11L SME	SC1	CX-SNSZ2
!	O MICON	CN	0201	87-A60-062-010	0E	CONN,05P V 9604S-05C	SC1	CX-SNSZ2
O	MICON	CN	0501	87-A60-673-010	0E	CONN,9P H 2MM JMT	SC1	CX-SNSZ2
S	MICON	D	0201	87-A40-758-080	0E	ZENER,UZ8.2BSB	SC1	CX-SNSZ2
S	MICON	D	0202	87-A40-313-080	0E	C-DIODE,MC2840	SC1	CX-SNSZ2
S	MICON	D	0501	87-020-465-080	0E	DIODE,1SS133	SC1	CX-SNSZ2
S	MICON	D	0503	87-020-465-080	0E	DIODE,1SS133	SC1	CX-SNSZ2
S	MICON	D	0507	87-020-465-080	0E	DIODE,1SS133	SC1	CX-SNSZ2
S	MICON	D	0540	87-A40-749-080	0E	ZENER,UZ5.6BSB	SC1	CX-SNSZ2
S	MICON	D	0541	87-020-465-080	0E	DIODE,1SS133	SC1	CX-SNSZ2
S	MICON	D	0542	87-020-465-080	0E	DIODE,1SS133	SC1	CX-SNSZ2
S	MICON	D	0543	87-020-465-080	0E	DIODE,1SS133	SC1	CX-SNSZ2
O	MICON	FL	0501	8A-NEC-601-010	1H	FL,HNA-10SS15T	SC1	CX-SNSZ2
S	MICON	IC	0501	8A-NEC-602-110	1H	C-IC,M38B57MCH-E258FP	SC1	CX-SNSZ2
S	MICON	IC	0502	87-070-083-010	1C	IC,GP1U281X	SC1	CX-SNSZ2
X	MICON	JR	0201	88-118-000-080	0E	C-JUMPER,S	SC1	CX-SNSZ2
X	MICON	JR	0202	88-118-000-080	0E	C-JUMPER,S	SC1	CX-SNSZ2
X	MICON	JR	0203	88-118-000-080	0E	C-JUMPER,S	SC1	CX-SNSZ2
X	MICON	JR	0204	88-129-000-080	0E	C-JUMPER,3216	SC1	CX-SNSZ2
X	MICON	JR	0502	88-118-000-080	0E	C-JUMPER,S	SC1	CX-SNSZ2
X	MICON	JR	0503	88-118-000-080	0E	C-JUMPER,S	SC1	CX-SNSZ2
X	MICON	JR	0504	88-118-000-080	0E	C-JUMPER,S	SC1	CX-SNSZ2
X	MICON	JR	0505	88-118-000-080	0E	C-JUMPER,S	SC1	CX-SNSZ2
X	MICON	JR	0506	88-118-000-080	0E	C-JUMPER,S	SC1	CX-SNSZ2
X	MICON	JR	0509	88-118-000-080	0E	C-JUMPER,S	SC1	CX-SNSZ2
O	MICON	L	0501	87-A50-655-010	0E	COIL,CLK 4.19MHZ (TOKO)7KLY	SC1	CX-SNSZ2
S	MICON	Q	0201	87-A30-076-080	0E	C-TR,2SC3052F	SC1	CX-SNSZ2
S	MICON	Q	0202	87-026-609-080	0E	TR,KTA1266GR	SC1	CX-SNSZ2
S	MICON	Q	0203	87-026-609-080	0E	TR,KTA1266GR	SC1	CX-SNSZ2
S	MICON	Q	0204	87-026-609-080	0E	TR,KTA1266GR	SC1	CX-SNSZ2
S	MICON	Q	0205	87-026-609-080	0E	TR,KTA1266GR	SC1	CX-SNSZ2
S	MICON	Q	0208	87-A30-104-080	0E	C-TR,RT1N 441C	SC1	CX-SNSZ2
S	MICON	Q	0209	87-A30-104-080	0E	C-TR,RT1N 441C	SC1	CX-SNSZ2
S	MICON	Q	0210	87-A30-520-080	0E	TR,2SC5342Y	SC1	CX-SNSZ2
S	MICON	Q	0211	87-A30-520-080	0E	TR,2SC5342Y	SC1	CX-SNSZ2
S	MICON	Q	0212	87-A30-520-080	0E	TR,2SC5342Y	SC1	CX-SNSZ2
S	MICON	Q	0213	87-A30-520-080	0E	TR,2SC5342Y	SC1	CX-SNSZ2
S	MICON	Q	0501	87-A30-076-080	0E	C-TR,2SC3052F	SC1	CX-SNSZ2
S	MICON	Q	0507	87-A30-234-080	0E	TR,CSC4115BC	SC1	CX-SNSZ2
X	MICON	R	0201	88-121-102-080	0E	RES,1K-1/8W J	SC1	CX-SNSZ2
X	MICON	R	0202	88-118-102-080	0E	C-RES,S 1K-1/10W J	SC1	CX-SNSZ2
X	MICON	R	0203	88-118-681-080	0E	C-RES,S 680-1/10W J	SC1	CX-SNSZ2
X	MICON	R	0204	88-128-392-080	0E	C-RES, 3.9K-1/8W J	SC1	CX-SNSZ2
X	MICON	R	0205	88-128-100-080	0E	C-RES, 10-1/8W J	SC1	CX-SNSZ2
X	MICON	R	0206	88-128-100-080	0E	C-RES, 10-1/8W J	SC1	CX-SNSZ2
X	MICON	R	0207	88-128-100-080	0E	C-RES, 10-1/8W J	SC1	CX-SNSZ2
X	MICON	R	0208	88-128-100-080	0E	C-RES, 10-1/8W J	SC1	CX-SNSZ2
X	MICON	R	0210	88-128-109-080	0E	C-RES, 1-1/8W J	SC1	CX-SNSZ2
X	MICON	R	0211	88-128-109-080	0E	C-RES, 1-1/8W J	SC1	CX-SNSZ2
X	MICON	R	0212	88-128-109-080	0E	C-RES, 1-1/8W J	SC1	CX-SNSZ2
X	MICON	R	0213	88-128-109-080	0E	C-RES, 1-1/8W J	SC1	CX-SNSZ2
X	MICON	R	0216	88-121-100-080	0E	RES,10-1/8W J	SC1	CX-SNSZ2
X	MICON	R	0217	88-128-100-080	0E	C-RES, 10-1/8W J	SC1	CX-SNSZ2
X	MICON	R	0218	88-128-100-080	0E	C-RES, 10-1/8W J	SC1	CX-SNSZ2

PARTS LIST

! = Δ SAFTY PARTS
 C = Components marked

All components used on this model at the production line are shown in this service manual.

However, please note that not all components will be available as spare parts for after-sales service.

Components marked S and O are designated as spare parts for service and will be stocked at the spare parts centers.

Components marked X and R are not designated as spare parts for after sales service, and will not be stocked at the spare parts centers.

K NO. = Only use Japanese.

! C	UNIT NAME	REF NO.	PARTS CODE	K NO.	DESCRIPTION	SUFFIX	MODEL NAME
X	MICON	R 0219	88-128-100-080	0E	C-RES, 10-1/8W J	SC1	CX-SNSZ2
X	MICON	R 0220	88-128-100-080	0E	C-RES, 10-1/8W J	SC1	CX-SNSZ2
X	MICON	R 0221	88-128-100-080	0E	C-RES, 10-1/8W J	SC1	CX-SNSZ2
X	MICON	R 0222	88-118-101-080	0E	C-RES,S 100-1/10W J	SC1	CX-SNSZ2
X	MICON	R 0223	88-118-182-080	0E	C-RES,S 1.8K-1/10W J	SC1	CX-SNSZ2
X	MICON	R 0224	88-118-182-080	0E	C-RES,S 1.8K-1/10W J	SC1	CX-SNSZ2
X	MICON	R 0225	88-121-101-080	0E	RES,100-1/8W J	SC1	CX-SNSZ2
X	MICON	R 0226	88-118-223-080	0E	C-RES,S 22K-1/10W J	SC1	CX-SNSZ2
X	MICON	R 0227	88-121-102-080	0E	RES,1K-1/8W J	SC1	CX-SNSZ2
X	MICON	R 0228	88-118-472-080	0E	C-RES,S 4.7K-1/10W J	SC1	CX-SNSZ2
X	MICON	R 0229	88-118-472-080	0E	C-RES,S 4.7K-1/10W J	SC1	CX-SNSZ2
X	MICON	R 0230	88-118-103-080	0E	C-RES,S 10K-1/10W J	SC1	CX-SNSZ2
X	MICON	R 0231	88-118-102-080	0E	C-RES,S 1K-1/10W J	SC1	CX-SNSZ2
X	MICON	R 0232	88-118-821-080	0E	C-RES,S 820-1/10W J	SC1	CX-SNSZ2
X	MICON	R 0233	88-118-102-080	0E	C-RES,S 1K-1/10W J	SC1	CX-SNSZ2
X	MICON	R 0234	88-118-122-080	0E	C-RES,S 1.2K-1/10W J	SC1	CX-SNSZ2
X	MICON	R 0235	88-118-122-080	0E	C-RES,S 1.2K-1/10W J	SC1	CX-SNSZ2
X	MICON	R 0236	88-118-122-080	0E	C-RES,S 1.2K-1/10W J	SC1	CX-SNSZ2
X	MICON	R 0237	88-118-103-080	0E	C-RES,S 10K-1/10W J	SC1	CX-SNSZ2
X	MICON	R 0238	88-118-102-080	0E	C-RES,S 1K-1/10W J	SC1	CX-SNSZ2
X	MICON	R 0239	88-118-821-080	0E	C-RES,S 820-1/10W J	SC1	CX-SNSZ2
X	MICON	R 0240	88-118-102-080	0E	C-RES,S 1K-1/10W J	SC1	CX-SNSZ2
X	MICON	R 0241	88-118-122-080	0E	C-RES,S 1.2K-1/10W J	SC1	CX-SNSZ2
X	MICON	R 0250	88-121-102-080	0E	RES,1K-1/8W J	SC1	CX-SNSZ2
X	MICON	R 0251	88-121-102-080	0E	RES,1K-1/8W J	SC1	CX-SNSZ2
X	MICON	R 0253	88-118-272-080	0E	C-RES,S 2.7K-1/10W J	SC1	CX-SNSZ2
X	MICON	R 0254	88-118-102-080	0E	C-RES,S 1K-1/10W J	SC1	CX-SNSZ2
X	MICON	R 0255	88-118-101-080	0E	C-RES,S 100-1/10W J	SC1	CX-SNSZ2
X	MICON	R 0256	88-118-101-080	0E	C-RES,S 100-1/10W J	SC1	CX-SNSZ2
X	MICON	R 0257	88-118-101-080	0E	C-RES,S 100-1/10W J	SC1	CX-SNSZ2
X	MICON	R 0258	88-118-101-080	0E	C-RES,S 100-1/10W J	SC1	CX-SNSZ2
X	MICON	R 0259	88-118-101-080	0E	C-RES,S 100-1/10W J	SC1	CX-SNSZ2
X	MICON	R 0260	88-118-101-080	0E	C-RES,S 100-1/10W J	SC1	CX-SNSZ2
X	MICON	R 0261	88-121-222-080	0E	RES,2.2K-1/8W J	SC1	CX-SNSZ2
X	MICON	R 0297	88-121-182-080	0E	RES,1.8K-1/8W J	SC1	CX-SNSZ2
X	MICON	R 0501	88-118-102-080	0E	C-RES,S 1K-1/10W J	SC1	CX-SNSZ2
X	MICON	R 0502	88-118-102-080	0E	C-RES,S 1K-1/10W J	SC1	CX-SNSZ2
X	MICON	R 0503	88-118-102-080	0E	C-RES,S 1K-1/10W J	SC1	CX-SNSZ2
X	MICON	R 0504	88-118-102-080	0E	C-RES,S 1K-1/10W J	SC1	CX-SNSZ2
X	MICON	R 0505	88-121-393-080	0E	RES,39K-1/8W J	SC1	CX-SNSZ2
X	MICON	R 0506	88-121-101-080	0E	RES,100-1/8W J	SC1	CX-SNSZ2
X	MICON	R 0508	88-118-102-080	0E	C-RES,S 1K-1/10W J	SC1	CX-SNSZ2
X	MICON	R 0509	88-121-101-080	0E	RES,100-1/8W J	SC1	CX-SNSZ2
X	MICON	R 0510	88-118-101-080	0E	C-RES,S 100-1/10W J	SC1	CX-SNSZ2
X	MICON	R 0511	88-118-101-080	0E	C-RES,S 100-1/10W J	SC1	CX-SNSZ2
X	MICON	R 0512	88-118-101-080	0E	C-RES,S 100-1/10W J	SC1	CX-SNSZ2
X	MICON	R 0513	88-128-109-080	0E	C-RES, 1-1/8W J	SC1	CX-SNSZ2
X	MICON	R 0514	88-128-109-080	0E	C-RES, 1-1/8W J	SC1	CX-SNSZ2
X	MICON	R 0515	88-128-100-080	0E	C-RES, 10-1/8W J	SC1	CX-SNSZ2
X	MICON	R 0516	88-100-000-010	0E	PLATING-JW, 0.58 SN95	SC1	CX-SNSZ2
X	MICON	R 0517	88-118-473-080	0E	C-RES,S 47K-1/10W J	SC1	CX-SNSZ2
X	MICON	R 0519	88-118-103-080	0E	C-RES,S 10K-1/10W J	SC1	CX-SNSZ2
X	MICON	R 0522	88-118-683-080	0E	C-RES,S 68K-1/10W J	SC1	CX-SNSZ2
X	MICON	R 0523	88-121-102-080	0E	RES,1K-1/8W J	SC1	CX-SNSZ2
X	MICON	R 0524	88-121-472-080	0E	RES,4.7K-1/8W J	SC1	CX-SNSZ2
X	MICON	R 0525	88-121-472-080	0E	RES,4.7K-1/8W J	SC1	CX-SNSZ2
X	MICON	R 0526	88-121-681-080	0E	RES,680-1/8W J	SC1	CX-SNSZ2
X	MICON	R 0527	88-121-681-080	0E	RES,680-1/8W J	SC1	CX-SNSZ2
X	MICON	R 0529	88-118-563-080	0E	C-RES,S 56K-1/10W J	SC1	CX-SNSZ2
X	MICON	R 0530	88-121-331-080	0E	RES,330-1/8W J	SC1	CX-SNSZ2
X	MICON	R 0531	88-118-100-080	0E	C-RES,S 10-1/10W J	SC1	CX-SNSZ2
X	MICON	R 0532	88-121-223-080	0E	RES,22K-1/8W J	SC1	CX-SNSZ2
X	MICON	R 0533	88-118-823-080	0E	C-RES,S 82K-1/10W J	SC1	CX-SNSZ2
X	MICON	R 0534	88-118-683-080	0E	C-RES,S 68K-1/10W J	SC1	CX-SNSZ2
X	MICON	R 0535	88-118-683-080	0E	C-RES,S 68K-1/10W J	SC1	CX-SNSZ2
X	MICON	R 0536	88-118-683-080	0E	C-RES,S 68K-1/10W J	SC1	CX-SNSZ2
X	MICON	R 0537	88-118-103-080	0E	C-RES,S 10K-1/10W J	SC1	CX-SNSZ2
X	MICON	R 0538	88-118-683-080	0E	C-RES,S 68K-1/10W J	SC1	CX-SNSZ2
X	MICON	R 0539	88-121-224-080	0E	RES,220K-1/8W J	SC1	CX-SNSZ2
X	MICON	R 0540	88-118-683-080	0E	C-RES,S 68K-1/10W J	SC1	CX-SNSZ2

PARTS LIST

! = Δ SAFTY PARTS
 C = Components marked

All components used on this model at the production line are shown in this service manual.

However, please note that not all components will be available as spare parts for after-sales service.

Components marked S and O are designated as spare parts for service and will be stocked at the spare parts centers.

Components marked X and R are not designated as spare parts for after sales service, and will not be stocked at the spare parts centers.

K NO. = Only use Japanese.

! C	UNIT NAME	REF NO.	PARTS CODE	K NO.	DESCRIPTION	SUFFIX	MODEL NAME
X	MICON	R 0541	88-118-683-080	0E	C-RES,S 68K-1/10W J	SC1	CX-SNSZ2
X	MICON	R 0542	88-121-330-080	0E	RES,33-1/8W J	SC1	CX-SNSZ2
X	MICON	R 0543	88-121-330-080	0E	RES,33-1/8W J	SC1	CX-SNSZ2
X	MICON	R 0544	88-121-330-080	0E	RES,33-1/8W J	SC1	CX-SNSZ2
X	MICON	R 0545	88-121-330-080	0E	RES,33-1/8W J	SC1	CX-SNSZ2
X	MICON	R 0546	88-100-000-010	0E	PLATING-JW, 0.58 SN95	SC1	CX-SNSZ2
X	MICON	R 0547	88-118-102-080	0E	C-RES,S 1K-1/10W J	SC1	CX-SNSZ2
X	MICON	R 0548	88-118-183-080	0E	C-RES,S 18K-1/10W J	SC1	CX-SNSZ2
X	MICON	R 0549	88-118-822-080	0E	C-RES,S 8.2K-1/10W J	SC1	CX-SNSZ2
X	MICON	R 0550	88-118-000-080	0E	C-JUMPER,S	SC1	CX-SNSZ2
X	MICON	R 0551	88-118-392-080	0E	C-RES,S 3.9K-1/10W J	SC1	CX-SNSZ2
X	MICON	R 0552	88-118-224-080	0E	C-RES,S 220K-1/10W J	SC1	CX-SNSZ2
X	MICON	R 0553	88-118-472-080	0E	C-RES,S 4.7K-1/10W J	SC1	CX-SNSZ2
X	MICON	R 0555	88-118-101-080	0E	C-RES,S 100-1/10W J	SC1	CX-SNSZ2
X	MICON	R 0556	88-118-683-080	0E	C-RES,S 68K-1/10W J	SC1	CX-SNSZ2
X	MICON	R 0581	88-118-104-080	0E	C-RES,S 100K-1/10W J	SC1	CX-SNSZ2
X	MICON	R 0582	88-118-104-080	0E	C-RES,S 100K-1/10W J	SC1	CX-SNSZ2
X	MICON	R 0583	88-118-104-080	0E	C-RES,S 100K-1/10W J	SC1	CX-SNSZ2
X	MICON	R 0584	88-118-104-080	0E	C-RES,S 100K-1/10W J	SC1	CX-SNSZ2
X	MICON	R 0585	88-118-104-080	0E	C-RES,S 100K-1/10W J	SC1	CX-SNSZ2
X	MICON	R 0586	88-118-104-080	0E	C-RES,S 100K-1/10W J	SC1	CX-SNSZ2
X	MICON	R 0587	88-118-104-080	0E	C-RES,S 100K-1/10W J	SC1	CX-SNSZ2
X	MICON	R 0588	88-118-104-080	0E	C-RES,S 100K-1/10W J	SC1	CX-SNSZ2
X	MICON	R 0589	88-128-102-080	0E	C-RES, 1K-1/8W J	SC1	CX-SNSZ2
X	MICON	R 0591	88-118-102-080	0E	C-RES,S 1K-1/10W J	SC1	CX-SNSZ2
X	MICON	R 0592	88-118-101-080	0E	C-RES,S 100-1/10W J	SC1	CX-SNSZ2
X	MICON	R 0593	88-118-821-080	0E	C-RES,S 820-1/10W J	SC1	CX-SNSZ2
X	MICON	R 0594	88-118-151-080	0E	C-RES,S 150-1/10W J	SC1	CX-SNSZ2
X	MICON	R 0595	88-118-122-080	0E	C-RES,S 1.2K-1/10W J	SC1	CX-SNSZ2
X	MICON	R 0596	88-118-332-080	0E	C-RES,S 3.3K-1/10W J	SC1	CX-SNSZ2
X	MICON	R 0597	88-118-331-080	0E	C-RES,S 330-1/10W J	SC1	CX-SNSZ2
X	MICON	R 0598	88-118-123-080	0E	C-RES,S 12K-1/10W J	SC1	CX-SNSZ2
O	MICON	S 0201	87-A90-095-080	0E	SW,TACT EVQ11G04M	SC1	CX-SNSZ2
O	MICON	S 0202	87-A90-095-080	0E	SW,TACT EVQ11G04M	SC1	CX-SNSZ2
O	MICON	S 0203	87-A90-095-080	0E	SW,TACT EVQ11G04M	SC1	CX-SNSZ2
O	MICON	S 0204	87-A90-095-080	0E	SW,TACT EVQ11G04M	SC1	CX-SNSZ2
O	MICON	S 0205	87-A90-095-080	0E	SW,TACT EVQ11G04M	SC1	CX-SNSZ2
O	MICON	S 0206	87-A90-095-080	0E	SW,TACT EVQ11G04M	SC1	CX-SNSZ2
O	MICON	S 0208	87-A90-095-080	0E	SW,TACT EVQ11G04M	SC1	CX-SNSZ2
O	MICON	S 0209	87-A90-095-080	0E	SW,TACT EVQ11G04M	SC1	CX-SNSZ2
O	MICON	S 0210	87-A90-095-080	0E	SW,TACT EVQ11G04M	SC1	CX-SNSZ2
O	MICON	S 0211	87-A90-095-080	0E	SW,TACT EVQ11G04M	SC1	CX-SNSZ2
O	MICON	S 0212	87-A90-095-080	0E	SW,TACT EVQ11G04M	SC1	CX-SNSZ2
O	MICON	S 0213	87-A90-095-080	0E	SW,TACT EVQ11G04M	SC1	CX-SNSZ2
O	MICON	SFR0501	87-024-431-080	0E	SFR,3.3K H RH063MC	SC1	CX-SNSZ2
O	OTHERS		82-NF7-218-010	0E	SPR-T,CASS	SC1	CX-SNSZ2
O	OTHERS		86-NFZ-231-010	1A	DMPR,70	SC1	CX-SNSZ2
O	OTHERS		8A-NEC-201-010	0E	HLDR,PT	SC1	CX-SNSZ2
O	OTHERS		8A-NEC-203-010	0E	HLDR,CD L	SC1	CX-SNSZ2
O	OTHERS		8A-NEC-204-010	0E	HLDR,CD R	SC1	CX-SNSZ2
O	OTHERS		8A-NEC-206-010	0E	HLDR,DECK	SC1	CX-SNSZ2
X	OTHERS		8A-NED-207-010	0E	CUSH, 12.5-15.5-2	SC1	CX-SNSZ2
O	P-AMP	C 0101	87-012-284-080	0E	C-CAP,U 6800P-50 K B GRM	SC1	CX-SNSZ2
O	P-AMP	C 0102	87-012-284-080	0E	C-CAP,U 6800P-50 K B GRM	SC1	CX-SNSZ2
O	P-AMP	C 0103	87-010-544-080	0E	CAP,E 0.1-50 M 11L SME	SC1	CX-SNSZ2
O	P-AMP	C 0104	87-010-544-080	0E	CAP,E 0.1-50 M 11L SME	SC1	CX-SNSZ2
O	P-AMP	C 0105	87-012-282-080	0E	C-CAP,U 4700P-50 K B	SC1	CX-SNSZ2
O	P-AMP	C 0106	87-012-282-080	0E	C-CAP,U 4700P-50 K B	SC1	CX-SNSZ2
O	P-AMP	C 0107	87-010-403-080	0E	CAP,E 3.3-50 M 11L SME	SC1	CX-SNSZ2
O	P-AMP	C 0108	87-010-403-080	0E	CAP,E 3.3-50 M 11L SME	SC1	CX-SNSZ2
O	P-AMP	C 0111	87-010-406-080	0E	CAP,E 22-50 M 11L SME	SC1	CX-SNSZ2
O	P-AMP	C 0112	87-010-406-080	0E	CAP,E 22-50 M 11L SME	SC1	CX-SNSZ2
O	P-AMP	C 0113	87-012-195-080	0E	C-CAP,U 100P-50 J CH	SC1	CX-SNSZ2
O	P-AMP	C 0114	87-012-195-080	0E	C-CAP,U 100P-50 J CH	SC1	CX-SNSZ2
O	P-AMP	C 0117	87-012-286-080	0E	C-CAP,U 0.01-25 K B	SC1	CX-SNSZ2
O	P-AMP	C 0118	87-012-286-080	0E	C-CAP,U 0.01-25 K B	SC1	CX-SNSZ2
O	P-AMP	C 0119	87-012-286-080	0E	C-CAP,U 0.01-25 K B	SC1	CX-SNSZ2
O	P-AMP	C 0120	87-012-286-080	0E	C-CAP,U 0.01-25 K B	SC1	CX-SNSZ2
O	P-AMP	C 0125	87-010-759-080	0E	C-CAP,U 0.1-25 Z F	SC1	CX-SNSZ2
O	P-AMP	C 0126	87-010-759-080	0E	C-CAP,U 0.1-25 Z F	SC1	CX-SNSZ2

PARTS LIST

! = Δ SAFTY PARTS
 C = Components marked

All components used on this model at the production line are shown in this service manual.

However, please note that not all components will be available as spare parts for after-sales service.

Components marked S and O are designated as spare parts for service and will be stocked at the spare parts centers.

Components marked X and R are not designated as spare parts for after sales service, and will not be stocked at the spare parts centers.

K NO. = Only use Japanese.

! C	UNIT NAME	REF NO.	PARTS CODE	K NO.	DESCRIPTION	SUFFIX	MODEL NAME	
O	P-AMP	C	0127	87-010-759-080	0E	C-CAP,U 0.1-25 Z F	SC1	CX-SNSZ2
O	P-AMP	C	0128	87-010-759-080	0E	C-CAP,U 0.1-25 Z F	SC1	CX-SNSZ2
O	P-AMP	C	0140	87-010-190-080	0E	C-CAP,S 0.01-50 Z F C2012	SC1	CX-SNSZ2
S	P-AMP	D	0101	87-A40-269-080	0E	C-DIODE,MC2836	SC1	CX-SNSZ2
S	P-AMP	D	0103	87-020-465-080	0E	DIODE,1SS133	SC1	CX-SNSZ2
S	P-AMP	D	0104	87-020-465-080	0E	DIODE,1SS133	SC1	CX-SNSZ2
S	P-AMP	D	0105	87-A40-269-080	0E	C-DIODE,MC2836	SC1	CX-SNSZ2
S	P-AMP	D	0106	87-A40-269-080	0E	C-DIODE,MC2836	SC1	CX-SNSZ2
S	P-AMP	D	0115	87-A40-270-080	0E	C-DIODE,MC2838	SC1	CX-SNSZ2
S	P-AMP	D	0129	87-A40-270-080	0E	C-DIODE,MC2838	SC1	CX-SNSZ2
O	P-AMP	J	0101	87-A60-602-010	1A	JACK,DIA6.3 BLK ST W/SW TC	SC1	CX-SNSZ2
O	P-AMP	J	0103	87-A61-452-010	0E	TERMINAL, SP 4P(MSC)	SC1	CX-SNSZ2
X	P-AMP	JR	0101	88-118-000-080	0E	C-JUMPER,S	SC1	CX-SNSZ2
O	P-AMP	L	0101	87-A50-610-010	0E	COIL,1UH K(MDEC)	SC1	CX-SNSZ2
O	P-AMP	L	0102	87-A50-610-010	0E	COIL,1UH K(MDEC)	SC1	CX-SNSZ2
S	P-AMP	Q	0103	87-A30-075-080	0E	C-TR,2SA1235F	SC1	CX-SNSZ2
S	P-AMP	Q	0104	87-A30-075-080	0E	C-TR,2SA1235F	SC1	CX-SNSZ2
S	P-AMP	Q	0105	87-A30-075-080	0E	C-TR,2SA1235F	SC1	CX-SNSZ2
S	P-AMP	Q	0106	87-A30-075-080	0E	C-TR,2SA1235F	SC1	CX-SNSZ2
S	P-AMP	Q	0107	87-A30-076-080	0E	C-TR,2SC3052F	SC1	CX-SNSZ2
S	P-AMP	Q	0108	87-A30-076-080	0E	C-TR,2SC3052F	SC1	CX-SNSZ2
S	P-AMP	Q	0109	87-A30-076-080	0E	C-TR,2SC3052F	SC1	CX-SNSZ2
S	P-AMP	Q	0110	87-A30-076-080	0E	C-TR,2SC3052F	SC1	CX-SNSZ2
S	P-AMP	Q	0111	87-026-610-080	0E	TR,KTC3198GR	SC1	CX-SNSZ2
S	P-AMP	Q	0112	87-026-610-080	0E	TR,KTC3198GR	SC1	CX-SNSZ2
S	P-AMP	Q	0113	87-A30-076-080	0E	C-TR,2SC3052F	SC1	CX-SNSZ2
S	P-AMP	Q	0114	87-A30-076-080	0E	C-TR,2SC3052F	SC1	CX-SNSZ2
S	P-AMP	Q	0115	87-A30-256-010	1A	TR,2SD1933	SC1	CX-SNSZ2
S	P-AMP	Q	0116	87-A30-256-010	1A	TR,2SD1933	SC1	CX-SNSZ2
S	P-AMP	Q	0117	87-A30-255-010	1A	TR,2SB1342	SC1	CX-SNSZ2
S	P-AMP	Q	0118	87-A30-255-010	1A	TR,2SB1342	SC1	CX-SNSZ2
S	P-AMP	Q	0123	87-A30-075-080	0E	C-TR,2SA1235F	SC1	CX-SNSZ2
S	P-AMP	Q	0124	87-A30-075-080	0E	C-TR,2SA1235F	SC1	CX-SNSZ2
S	P-AMP	Q	0126	87-A30-075-080	0E	C-TR,2SA1235F	SC1	CX-SNSZ2
S	P-AMP	Q	0130	87-A30-076-080	0E	C-TR,2SC3052F	SC1	CX-SNSZ2
X	P-AMP	R	0103	88-118-472-080	0E	C-RES,S 4.7K-1/10W J	SC1	CX-SNSZ2
X	P-AMP	R	0104	88-118-472-080	0E	C-RES,S 4.7K-1/10W J	SC1	CX-SNSZ2
X	P-AMP	R	0105	88-118-223-080	0E	C-RES,S 22K-1/10W J	SC1	CX-SNSZ2
X	P-AMP	R	0106	88-118-223-080	0E	C-RES,S 22K-1/10W J	SC1	CX-SNSZ2
X	P-AMP	R	0107	88-118-101-080	0E	C-RES,S 100-1/10W J	SC1	CX-SNSZ2
X	P-AMP	R	0108	88-118-101-080	0E	C-RES,S 100-1/10W J	SC1	CX-SNSZ2
X	P-AMP	R	0109	88-118-222-080	0E	C-RES,S 2.2K-1/10W J	SC1	CX-SNSZ2
X	P-AMP	R	0110	88-118-222-080	0E	C-RES,S 2.2K-1/10W J	SC1	CX-SNSZ2
X	P-AMP	R	0111	88-118-102-080	0E	C-RES,S 1K-1/10W J	SC1	CX-SNSZ2
X	P-AMP	R	0112	88-118-102-080	0E	C-RES,S 1K-1/10W J	SC1	CX-SNSZ2
X	P-AMP	R	0113	88-118-223-080	0E	C-RES,S 22K-1/10W J	SC1	CX-SNSZ2
X	P-AMP	R	0114	88-118-223-080	0E	C-RES,S 22K-1/10W J	SC1	CX-SNSZ2
X	P-AMP	R	0115	88-128-109-080	0E	C-RES, 1-1/8W J	SC1	CX-SNSZ2
X	P-AMP	R	0116	88-128-109-080	0E	C-RES, 1-1/8W J	SC1	CX-SNSZ2
X	P-AMP	R	0117	88-118-103-080	0E	C-RES,S 10K-1/10W J	SC1	CX-SNSZ2
X	P-AMP	R	0118	88-118-103-080	0E	C-RES,S 10K-1/10W J	SC1	CX-SNSZ2
X	P-AMP	R	0119	88-118-101-080	0E	C-RES,S 100-1/10W J	SC1	CX-SNSZ2
X	P-AMP	R	0120	88-118-101-080	0E	C-RES,S 100-1/10W J	SC1	CX-SNSZ2
X	P-AMP	R	0121	88-118-101-080	0E	C-RES,S 100-1/10W J	SC1	CX-SNSZ2
X	P-AMP	R	0122	88-118-101-080	0E	C-RES,S 100-1/10W J	SC1	CX-SNSZ2
X	P-AMP	R	0123	88-121-222-080	0E	RES,2.2K-1/8W J	SC1	CX-SNSZ2
X	P-AMP	R	0124	88-121-222-080	0E	RES,2.2K-1/8W J	SC1	CX-SNSZ2
X	P-AMP	R	0125	88-121-222-080	0E	RES,2.2K-1/8W J	SC1	CX-SNSZ2
X	P-AMP	R	0126	88-121-222-080	0E	RES,2.2K-1/8W J	SC1	CX-SNSZ2
X	P-AMP	R	0127	88-118-390-080	0E	C-RES,S 39-1/10W J	SC1	CX-SNSZ2
X	P-AMP	R	0128	88-118-390-080	0E	C-RES,S 39-1/10W J	SC1	CX-SNSZ2
X	P-AMP	R	0131	88-128-109-080	0E	C-RES, 1-1/8W J	SC1	CX-SNSZ2
X	P-AMP	R	0132	88-128-109-080	0E	C-RES, 1-1/8W J	SC1	CX-SNSZ2
X	P-AMP	R	0133	88-118-102-080	0E	C-RES,S 1K-1/10W J	SC1	CX-SNSZ2
X	P-AMP	R	0134	88-118-102-080	0E	C-RES,S 1K-1/10W J	SC1	CX-SNSZ2
X	P-AMP	R	0135	88-118-182-080	0E	C-RES,S 1.8K-1/10W J	SC1	CX-SNSZ2
X	P-AMP	R	0136	88-118-182-080	0E	C-RES,S 1.8K-1/10W J	SC1	CX-SNSZ2
X	P-AMP	R	0137	88-118-101-080	0E	C-RES,S 100-1/10W J	SC1	CX-SNSZ2
X	P-AMP	R	0138	88-118-101-080	0E	C-RES,S 100-1/10W J	SC1	CX-SNSZ2
X	P-AMP	R	0139	88-121-562-080	0E	RES,5.6K-1/8W J	SC1	CX-SNSZ2

PARTS LIST

! = Δ SAFTY PARTS
 C = Components marked

All components used on this model at the production line are shown in this service manual.

However, please note that not all components will be available as spare parts for after-sales service.

Components marked S and O are designated as spare parts for service and will be stocked at the spare parts centers.

Components marked X and R are not designated as spare parts for after sales service, and will not be stocked at the spare parts centers.

K NO. = Only use Japanese.

! C	UNIT NAME	REF NO.	PARTS CODE	K NO.	DESCRIPTION	SUFFIX	MODEL NAME
X	P-AMP	R 0140	88-121-562-080	0E	RES,5.6K-1/8W J	SC1	CX-SNSZ2
X	P-AMP	R 0141	88-118-102-080	0E	C-RES,S 1K-1/10W J	SC1	CX-SNSZ2
X	P-AMP	R 0142	88-121-102-080	0E	RES,1K-1/8W J	SC1	CX-SNSZ2
X	P-AMP	R 0143	88-130-221-080	0E	RES,220-1/4W J	SC1	CX-SNSZ2
X	P-AMP	R 0144	88-130-221-080	0E	RES,220-1/4W J	SC1	CX-SNSZ2
X	P-AMP	R 0145	88-130-221-080	0E	RES,220-1/4W J	SC1	CX-SNSZ2
X	P-AMP	R 0146	88-130-221-080	0E	RES,220-1/4W J	SC1	CX-SNSZ2
X	P-AMP	R 0147	88-130-100-080	0E	RES,10-1/4W J	SC1	CX-SNSZ2
X	P-AMP	R 0148	88-130-100-080	0E	RES,10-1/4W J	SC1	CX-SNSZ2
X	P-AMP	R 0149	88-128-100-080	0E	C-RES, 10-1/8W J	SC1	CX-SNSZ2
X	P-AMP	R 0150	88-128-100-080	0E	C-RES, 10-1/8W J	SC1	CX-SNSZ2
X	P-AMP	R 0151	88-130-102-080	0E	RES,1K-1/4W J	SC1	CX-SNSZ2
X	P-AMP	R 0152	88-140-471-080	0E	RES,470-1/2W J	SC1	CX-SNSZ2
X	P-AMP	R 0157	88-118-472-080	0E	C-RES,S 4.7K-1/10W J	SC1	CX-SNSZ2
X	P-AMP	R 0159	88-118-103-080	0E	C-RES,S 10K-1/10W J	SC1	CX-SNSZ2
X	P-AMP	R 0160	88-118-103-080	0E	C-RES,S 10K-1/10W J	SC1	CX-SNSZ2
X	P-AMP	R 0165	88-118-272-080	0E	C-RES,S 2.7K-1/10W J	SC1	CX-SNSZ2
X	P-AMP	R 0166	88-118-272-080	0E	C-RES,S 2.7K-1/10W J	SC1	CX-SNSZ2
X	P-AMP	R 0167	88-118-103-080	0E	C-RES,S 10K-1/10W J	SC1	CX-SNSZ2
X	P-AMP	R 0168	88-118-473-080	0E	C-RES,S 47K-1/10W J	SC1	CX-SNSZ2
X	P-AMP	R 0169	88-118-222-080	0E	C-RES,S 2.2K-1/10W J	SC1	CX-SNSZ2
X	P-AMP	R 0170	88-118-222-080	0E	C-RES,S 2.2K-1/10W J	SC1	CX-SNSZ2
X	P-AMP	R 0171	88-118-122-080	0E	C-RES,S 1.2K-1/10W J	SC1	CX-SNSZ2
X	P-AMP	R 0172	88-118-122-080	0E	C-RES,S 1.2K-1/10W J	SC1	CX-SNSZ2
X	P-AMP	R 0175	88-118-331-080	0E	C-RES,S 330-1/10W J	SC1	CX-SNSZ2
X	P-AMP	R 0176	88-118-331-080	0E	C-RES,S 330-1/10W J	SC1	CX-SNSZ2
X	P-AMP	R 0178	88-118-103-080	0E	C-RES,S 10K-1/10W J	SC1	CX-SNSZ2
X	P-AMP	R 0179	88-118-473-080	0E	C-RES,S 47K-1/10W J	SC1	CX-SNSZ2
X	P-AMP	R 0180	88-118-473-080	0E	C-RES,S 47K-1/10W J	SC1	CX-SNSZ2
!	O P-AMP	RY 0101	87-045-389-010	1C	RELAY,12V OSA-SS-212DM5	SC1	CX-SNSZ2
O	P-AMP	TH 0101	87-A91-042-080	0E	C-THMS,100K 55001	SC1	CX-SNSZ2
O	P-AMP	TH 0102	87-A91-042-080	0E	C-THMS,100K 55001	SC1	CX-SNSZ2
X	P-SUPPLY/PWB/FUN		8A-NEC-640-210	1F	PWB,COMB MAIN	SC1	CX-SNSZ2
X	P-SUPPLY/PWB/FUN		8A-NEC-641-210	--	PWB,MAIN	SC1	CX-SNSZ2
X	P-SUPPLY/PWB/FUN		8A-NEC-642-210	--	PWB,HLDR WIRE	SC1	CX-SNSZ2
X	P-SUPPLY/PWB/FUN		8A-NEC-643-210	--	PWB,HLDR FFC	SC1	CX-SNSZ2
O	P-SUPPLY/PWB/FUN	C 0009	87-010-759-080	0E	C-CAP,U 0.1-25 Z F	SC1	CX-SNSZ2
O	P-SUPPLY/PWB/FUN	C 0010	87-010-759-080	0E	C-CAP,U 0.1-25 Z F	SC1	CX-SNSZ2
O	P-SUPPLY/PWB/FUN	C 0011	87-010-759-080	0E	C-CAP,U 0.1-25 Z F	SC1	CX-SNSZ2
O	P-SUPPLY/PWB/FUN	C 0012	87-010-759-080	0E	C-CAP,U 0.1-25 Z F	SC1	CX-SNSZ2
O	P-SUPPLY/PWB/FUN	C 0021	87-A12-442-000	1H	CAP,E 3300-25 M 85 IV LELON	SC1	CX-SNSZ2
O	P-SUPPLY/PWB/FUN	C 0022	87-A10-831-080	1A	CAP,E 1000-25 M SMG	SC1	CX-SNSZ2
O	P-SUPPLY/PWB/FUN	C 0023	87-010-387-080	1A	CAP,E 470-25 M SME	SC1	CX-SNSZ2
O	P-SUPPLY/PWB/FUN	C 0025	87-010-408-080	0E	CAP,E 47-50 M 11L SME	SC1	CX-SNSZ2
O	P-SUPPLY/PWB/FUN	C 0026	87-010-408-080	0E	CAP,E 47-50 M 11L SME	SC1	CX-SNSZ2
O	P-SUPPLY/PWB/FUN	C 0031	87-010-759-080	0E	C-CAP,U 0.1-25 Z F	SC1	CX-SNSZ2
O	P-SUPPLY/PWB/FUN	C 0032	87-012-286-080	0E	C-CAP,U 0.01-25 K B	SC1	CX-SNSZ2
O	P-SUPPLY/PWB/FUN	C 0034	87-010-260-080	0E	CAP,E 47-25 M 11L SME	SC1	CX-SNSZ2
O	P-SUPPLY/PWB/FUN	C 0035	87-010-406-080	0E	CAP,E 22-50 M 11L SME	SC1	CX-SNSZ2
O	P-SUPPLY/PWB/FUN	C 0036	87-010-112-080	0E	CAP,E 100-16 M 11L SME	SC1	CX-SNSZ2
O	P-SUPPLY/PWB/FUN	C 0050	87-010-247-080	0E	CAP,E 100-50 M SME	SC1	CX-SNSZ2
O	P-SUPPLY/PWB/FUN	C 0051	87-010-247-080	0E	CAP,E 100-50 M SME	SC1	CX-SNSZ2
O	P-SUPPLY/PWB/FUN	C 0060	87-010-403-080	0E	CAP,E 3.3-50 M 11L SME	SC1	CX-SNSZ2
O	P-SUPPLY/PWB/FUN	C 0061	87-010-260-080	0E	CAP,E 47-25 M 11L SME	SC1	CX-SNSZ2
S	P-SUPPLY/PWB/FUN	D 0005	87-A40-535-080	0E	DIODE,1N5393-GOODARK	SC1	CX-SNSZ2
S	P-SUPPLY/PWB/FUN	D 0006	87-A40-535-080	0E	DIODE,1N5393-GOODARK	SC1	CX-SNSZ2
S	P-SUPPLY/PWB/FUN	D 0007	87-A40-535-080	0E	DIODE,1N5393-GOODARK	SC1	CX-SNSZ2
S	P-SUPPLY/PWB/FUN	D 0008	87-A40-535-080	0E	DIODE,1N5393-GOODARK	SC1	CX-SNSZ2
S	P-SUPPLY/PWB/FUN	D 0026	87-A40-553-080	0E	DIODE,1N4003 LES	SC1	CX-SNSZ2
S	P-SUPPLY/PWB/FUN	D 0027	87-A40-553-080	0E	DIODE,1N4003 LES	SC1	CX-SNSZ2
S	P-SUPPLY/PWB/FUN	D 0029	87-A40-777-080	0E	ZENER,UZ30BSB	SC1	CX-SNSZ2
S	P-SUPPLY/PWB/FUN	D 0030	87-020-465-080	0E	DIODE,1SS133	SC1	CX-SNSZ2
S	P-SUPPLY/PWB/FUN	D 0031	87-A40-764-080	0E	ZENER,UZ10BSC	SC1	CX-SNSZ2
S	P-SUPPLY/PWB/FUN	D 0032	87-A40-764-080	0E	ZENER,UZ10BSC	SC1	CX-SNSZ2
S	P-SUPPLY/PWB/FUN	D 0034	87-020-465-080	0E	DIODE,1SS133	SC1	CX-SNSZ2
S	P-SUPPLY/PWB/FUN	D 0035	87-020-465-080	0E	DIODE,1SS133	SC1	CX-SNSZ2
S	P-SUPPLY/PWB/FUN	D 0063	87-A40-313-080	0E	C-DIODE,MC2840	SC1	CX-SNSZ2
S	P-SUPPLY/PWB/FUN	D 0064	87-A40-313-080	0E	C-DIODE,MC2840	SC1	CX-SNSZ2
X	P-SUPPLY/PWB/FUN	JR 0002	88-118-000-080	0E	C-JUMPER,S	SC1	CX-SNSZ2
S	P-SUPPLY/PWB/FUN	Q 0002	87-026-609-080	0E	TR,KTA1266GR	SC1	CX-SNSZ2

PARTS LIST

! = Δ SAFTY PARTS
 C = Components marked

All components used on this model at the production line are shown in this service manual.

However, please note that not all components will be available as spare parts for after-sales service.

Components marked S and O are designated as spare parts for service and will be stocked at the spare parts centers.

Components marked X and R are not designated as spare parts for after sales service, and will not be stocked at the spare parts centers.

K NO. = Only use japanese.

! C	UNIT NAME	REF NO.	PARTS CODE	K NO.	DESCRIPTION	SUFFIX	MODEL NAME
S	P-SUPPLY/PWB/FUN	Q 0003	89-213-702-010	1A	TR,2SB1370E	SC1	CX-SNSZ2
S	P-SUPPLY/PWB/FUN	Q 0005	87-026-610-080	0E	TR,KTC3198GR	SC1	CX-SNSZ2
S	P-SUPPLY/PWB/FUN	Q 0006	87-A30-076-080	0E	C-TR,2SC3052F	SC1	CX-SNSZ2
S	P-SUPPLY/PWB/FUN	Q 0009	87-026-609-080	0E	TR,KTA1266GR	SC1	CX-SNSZ2
S	P-SUPPLY/PWB/FUN	Q 0010	87-A30-076-080	0E	C-TR,2SC3052F	SC1	CX-SNSZ2
S	P-SUPPLY/PWB/FUN	Q 0058	87-A30-074-080	0E	C-TR,RT1P 141C	SC1	CX-SNSZ2
S	P-SUPPLY/PWB/FUN	Q 0059	87-A30-075-080	0E	C-TR,2SA1235F	SC1	CX-SNSZ2
S	P-SUPPLY/PWB/FUN	Q 0060	87-A30-076-080	0E	C-TR,2SC3052F	SC1	CX-SNSZ2
S	P-SUPPLY/PWB/FUN	Q 0061	87-A30-075-080	0E	C-TR,2SA1235F	SC1	CX-SNSZ2
S	P-SUPPLY/PWB/FUN	Q 0062	87-A30-076-080	0E	C-TR,2SC3052F	SC1	CX-SNSZ2
S	P-SUPPLY/PWB/FUN	Q 0063	87-A30-075-080	0E	C-TR,2SA1235F	SC1	CX-SNSZ2
S	P-SUPPLY/PWB/FUN	Q 0064	87-A30-076-080	0E	C-TR,2SC3052F	SC1	CX-SNSZ2
X	P-SUPPLY/PWB/FUN	R 0001	88-128-159-080	0E	C-RES, 1.5-1/8W J	SC1	CX-SNSZ2
X	P-SUPPLY/PWB/FUN	R 0005	88-128-109-080	0E	C-RES, 1-1/8W J	SC1	CX-SNSZ2
X	P-SUPPLY/PWB/FUN	R 0009	88-121-273-080	0E	RES,27K-1/8W J	SC1	CX-SNSZ2
X	P-SUPPLY/PWB/FUN	R 0010	88-118-273-080	0E	C-RES,S 27K-1/10W J	SC1	CX-SNSZ2
X	P-SUPPLY/PWB/FUN	R 0012	88-118-472-080	0E	C-RES,S 4.7K-1/10W J	SC1	CX-SNSZ2
X	P-SUPPLY/PWB/FUN	R 0013	88-118-472-080	0E	C-RES,S 4.7K-1/10W J	SC1	CX-SNSZ2
X	P-SUPPLY/PWB/FUN	R 0014	88-128-470-080	0E	C-RES, 47-1/8W J	SC1	CX-SNSZ2
X	P-SUPPLY/PWB/FUN	R 0016	88-118-473-080	0E	C-RES,S 47K-1/10W J	SC1	CX-SNSZ2
X	P-SUPPLY/PWB/FUN	R 0018	88-118-221-080	0E	C-RES,S 220-1/10W J	SC1	CX-SNSZ2
X	P-SUPPLY/PWB/FUN	R 0020	88-118-680-080	0E	C-RES,S 68-1/10W J	SC1	CX-SNSZ2
X	P-SUPPLY/PWB/FUN	R 0021	88-118-472-080	0E	C-RES,S 4.7K-1/10W J	SC1	CX-SNSZ2
X	P-SUPPLY/PWB/FUN	R 0022	88-118-221-080	0E	C-RES,S 220-1/10W J	SC1	CX-SNSZ2
X	P-SUPPLY/PWB/FUN	R 0023	88-118-103-080	0E	C-RES,S 10K-1/10W J	SC1	CX-SNSZ2
X	P-SUPPLY/PWB/FUN	R 0027	88-118-471-080	0E	C-RES,S 470-1/10W J	SC1	CX-SNSZ2
X	P-SUPPLY/PWB/FUN	R 0030	88-118-393-080	0E	C-RES,S 39K-1/10W J	SC1	CX-SNSZ2
X	P-SUPPLY/PWB/FUN	R 0032	88-121-102-080	0E	RES,1K-1/8W J	SC1	CX-SNSZ2
X	P-SUPPLY/PWB/FUN	R 0033	88-118-101-080	0E	C-RES,S 100-1/10W J	SC1	CX-SNSZ2
X	P-SUPPLY/PWB/FUN	R 0037	88-129-000-080	0E	C-JUMPER,3216	SC1	CX-SNSZ2
X	P-SUPPLY/PWB/FUN	R 0038	88-100-000-010	0E	PLATING-JW, 0.58 SN95	SC1	CX-SNSZ2
X	P-SUPPLY/PWB/FUN	R 0040	88-129-000-080	0E	C-JUMPER,3216	SC1	CX-SNSZ2
X	P-SUPPLY/PWB/FUN	R 0041	88-121-181-080	0E	RES,180-1/8W J	SC1	CX-SNSZ2
X	P-SUPPLY/PWB/FUN	R 0042	88-128-181-080	0E	C-RES, 180-1/8W J	SC1	CX-SNSZ2
X	P-SUPPLY/PWB/FUN	R 0043	88-128-181-080	0E	C-RES, 180-1/8W J	SC1	CX-SNSZ2
X	P-SUPPLY/PWB/FUN	R 0044	88-128-221-080	0E	C-RES, 220-1/8W J	SC1	CX-SNSZ2
X	P-SUPPLY/PWB/FUN	R 0045	88-128-221-080	0E	C-RES, 220-1/8W J	SC1	CX-SNSZ2
X	P-SUPPLY/PWB/FUN	R 0046	88-129-000-080	0E	C-JUMPER,3216	SC1	CX-SNSZ2
X	P-SUPPLY/PWB/FUN	R 0047	88-121-181-080	0E	RES,180-1/8W J	SC1	CX-SNSZ2
X	P-SUPPLY/PWB/FUN	R 0048	88-121-181-080	0E	RES,180-1/8W J	SC1	CX-SNSZ2
X	P-SUPPLY/PWB/FUN	R 0049	88-128-181-080	0E	C-RES, 180-1/8W J	SC1	CX-SNSZ2
X	P-SUPPLY/PWB/FUN	R 0050	88-128-221-080	0E	C-RES, 220-1/8W J	SC1	CX-SNSZ2
X	P-SUPPLY/PWB/FUN	R 0051	88-128-221-080	0E	C-RES, 220-1/8W J	SC1	CX-SNSZ2
X	P-SUPPLY/PWB/FUN	R 0052	88-128-682-080	0E	C-RES, 6.8K-1/8W J	SC1	CX-SNSZ2
X	P-SUPPLY/PWB/FUN	R 0053	88-128-822-080	0E	C-RES, 8.2K-1/8W J	SC1	CX-SNSZ2
X	P-SUPPLY/PWB/FUN	R 0057	88-118-272-080	0E	C-RES,S 2.7K-1/10W J	SC1	CX-SNSZ2
X	P-SUPPLY/PWB/FUN	R 0058	88-118-103-080	0E	C-RES,S 10K-1/10W J	SC1	CX-SNSZ2
X	P-SUPPLY/PWB/FUN	R 0060	88-118-393-080	0E	C-RES,S 39K-1/10W J	SC1	CX-SNSZ2
X	P-SUPPLY/PWB/FUN	R 0061	88-121-333-080	0E	RES,33K-1/8W J	SC1	CX-SNSZ2
X	P-SUPPLY/PWB/FUN	R 0065	88-118-153-080	0E	C-RES,S 15K-1/10W J	SC1	CX-SNSZ2
X	P-SUPPLY/PWB/FUN	R 0066	88-118-104-080	0E	C-RES,S 100K-1/10W J	SC1	CX-SNSZ2
X	P-SUPPLY/PWB/FUN	R 0067	88-118-103-080	0E	C-RES,S 10K-1/10W J	SC1	CX-SNSZ2
X	P-SUPPLY/PWB/FUN	R 0072	88-121-563-080	0E	RES,56K-1/8W J	SC1	CX-SNSZ2
X	P-SUPPLY/PWB/FUN	R 0073	88-121-563-080	0E	RES,56K-1/8W J	SC1	CX-SNSZ2
X	P-SUPPLY/PWB/FUN	R 0076	88-118-183-080	0E	C-RES,S 18K-1/10W J	SC1	CX-SNSZ2
X	PACKING DU		87-B40-097-010	1A	BAG,PV 0.04-650-650 PL	SC1	CX-SNSZ2
X	PACKING DU		8A-NEC-854-010	--	CUSHION,FRONT/LHC1	SC1	CX-SNSZ2
X	PACKING DU		8A-NEC-855-010	--	CUSHION,REAR/LHC1	SC1	CX-SNSZ2
X	PACKING DU		8A-NEC-875-010	--	CTN,INDIV SC1	SC1	CX-SNSZ2
X	PACKING DU		94-875-574-010	1A	SH,FOAMED-MAT 0.31-650-450	SC1	CX-SNSZ2
X	PLATE		87-B40-281-010	0E	LBL,BAR-CODE A 35X8	SC1	CX-SNSZ2
O	PLATE		8A-NEC-006-010	0E	WINDOW,CASS 1	SC1	CX-SNSZ2
O	PLATE		8A-NEC-007-010	0E	WINDOW,CASS 2	SC1	CX-SNSZ2
O	PLATE		8A-NEC-033-010	1B	WINDOW,DISP D	SC1	CX-SNSZ2
X	PLATE		8A-NED-039-010	--	LBL,CAUTION AC CODE	SC1	CX-SNSZ2
X	PRINTED DU		87-056-131-110	0E	BAG,PV WARR-D	SC1	CX-SNSZ2
X	PRINTED DU		87-B40-085-010	0E	BAG,PV 0.04-200-350 PL	SC1	CX-SNSZ2
X	PRINTED DU		87-B50-069-010	0E	LIST,SERVICE JP-TOKYO	SC1	CX-SNSZ2
O	PRINTED DU		8A-NEC-908-010	--	IB,D(J)B	SC1	CX-SNSZ2
X	PRINTED DU		8A-NEC-909-010	--	CARD,CUST XG-SZ2	SC1	CX-SNSZ2

PARTS LIST

! = Δ SAFTY PARTS
 C = Components marked

All components used on this model at the production line are shown in this service manual.

However, please note that not all components will be available as spare parts for after-sales service.

Components marked S and O are designated as spare parts for service and will be stocked at the spare parts centers.

Components marked X and R are not designated as spare parts for after sales service, and will not be stocked at the spare parts centers.

K NO. = Only use japanese.

! C	UNIT NAME	REF NO.	PARTS CODE	K NO.	DESCRIPTION	SUFFIX	MODEL NAME
X	PRINTED DU		8A-NEC-910-010	--	WARR-CARD,XG-SZ2	SC1	CX-SNSZ2
O	SCREW		87-067-641-010	0E	UTT2+3-8 W/O SLOT BLK	SC1	CX-SNSZ2
O	SCREW		87-067-703-010	0E	BVT2+3-10 W/O SLOT	SC1	CX-SNSZ2
O	SCREW		87-067-822-010	0E	BVT2+3-20 W/O SLOT	SC1	CX-SNSZ2
O	SCREW		87-067-975-010	0E	S-SCREW,IT+4-8 SWCH12A	SC1	CX-SNSZ2
O	SCREW		87-571-092-410	0E	VIT+3-4	SC1	CX-SNSZ2
O	TAPE		8A-NEC-633-010	0E	CONN ASSY,3P (PH)	SC1	CX-SNSZ2
O	TAPE		8A-NEC-634-010	1A	CONN ASSY,8P RPB	SC1	CX-SNSZ2
X	TAPE		M8-ZZM-29C-070	2M	ZZM-2 APR1NC	SC1	CX-SNSZ2
O	TAPE DECK	C 0401	87-010-759-080	0E	C-CAP,U 0.1-25 Z F	SC1	CX-SNSZ2
O	TAPE DECK	C 0402	87-010-759-080	0E	C-CAP,U 0.1-25 Z F	SC1	CX-SNSZ2
O	TAPE DECK	C 0403	87-012-193-080	0E	C-CAP,U 82P-50 J CH	SC1	CX-SNSZ2
O	TAPE DECK	C 0404	87-012-193-080	0E	C-CAP,U 82P-50 J CH	SC1	CX-SNSZ2
O	TAPE DECK	C 0405	87-012-286-080	0E	C-CAP,U 0.01-25 K B	SC1	CX-SNSZ2
O	TAPE DECK	C 0406	87-012-286-080	0E	C-CAP,U 0.01-25 K B	SC1	CX-SNSZ2
O	TAPE DECK	C 0407	87-012-286-080	0E	C-CAP,U 0.01-25 K B	SC1	CX-SNSZ2
O	TAPE DECK	C 0408	87-012-286-080	0E	C-CAP,U 0.01-25 K B	SC1	CX-SNSZ2
O	TAPE DECK	C 0409	87-012-278-080	0E	C-CAP,U 2200P-50 K B	SC1	CX-SNSZ2
O	TAPE DECK	C 0410	87-012-278-080	0E	C-CAP,U 2200P-50 K B	SC1	CX-SNSZ2
O	TAPE DECK	C 0411	87-010-405-080	0E	CAP,E 10-50 M 11L SME	SC1	CX-SNSZ2
O	TAPE DECK	C 0412	87-010-405-080	0E	CAP,E 10-50 M 11L SME	SC1	CX-SNSZ2
O	TAPE DECK	C 0413	87-010-197-080	0E	C-CAP,S 0.01-25 K B C2012	SC1	CX-SNSZ2
O	TAPE DECK	C 0421	87-012-275-080	0E	C-CAP,U 1200P-50 K B GRM	SC1	CX-SNSZ2
O	TAPE DECK	C 0422	87-012-275-080	0E	C-CAP,U 1200P-50 K B GRM	SC1	CX-SNSZ2
O	TAPE DECK	C 0423	87-012-274-080	0E	C-CAP,U 1000P-50 K B	SC1	CX-SNSZ2
O	TAPE DECK	C 0424	87-012-274-080	0E	C-CAP,U 1000P-50 K B	SC1	CX-SNSZ2
O	TAPE DECK	C 0425	87-010-263-080	0E	CAP,E 100-10 M 11L SME	SC1	CX-SNSZ2
O	TAPE DECK	C 0426	87-010-263-080	0E	CAP,E 100-10 M 11L SME	SC1	CX-SNSZ2
O	TAPE DECK	C 0427	87-012-188-080	0E	C-CAP,U 47P-50 J CH	SC1	CX-SNSZ2
O	TAPE DECK	C 0428	87-012-188-080	0E	C-CAP,U 47P-50 J CH	SC1	CX-SNSZ2
O	TAPE DECK	C 0429	87-010-598-080	0E	C-CAP,S 0.068-16 K R GRM	SC1	CX-SNSZ2
O	TAPE DECK	C 0430	87-010-598-080	0E	C-CAP,S 0.068-16 K R GRM	SC1	CX-SNSZ2
O	TAPE DECK	C 0431	87-012-284-080	0E	C-CAP,U 6800P-50 K B GRM	SC1	CX-SNSZ2
O	TAPE DECK	C 0432	87-012-284-080	0E	C-CAP,U 6800P-50 K B GRM	SC1	CX-SNSZ2
O	TAPE DECK	C 0433	87-010-546-080	0E	CAP,E 0.33-50 M 11L SME	SC1	CX-SNSZ2
O	TAPE DECK	C 0434	87-010-546-080	0E	CAP,E 0.33-50 M 11L SME	SC1	CX-SNSZ2
O	TAPE DECK	C 0435	87-010-263-080	0E	CAP,E 100-10 M 11L SME	SC1	CX-SNSZ2
O	TAPE DECK	C 0441	87-010-759-080	0E	C-CAP,U 0.1-25 Z F	SC1	CX-SNSZ2
O	TAPE DECK	C 0442	87-010-759-080	0E	C-CAP,U 0.1-25 Z F	SC1	CX-SNSZ2
O	TAPE DECK	C 0443	87-010-759-080	0E	C-CAP,U 0.1-25 Z F	SC1	CX-SNSZ2
O	TAPE DECK	C 0445	87-A10-039-080	0E	C-CAP,U 470P-50 J CH	SC1	CX-SNSZ2
O	TAPE DECK	C 0452	87-010-382-080	0E	CAP,E 22-25 M 11L SME	SC1	CX-SNSZ2
O	TAPE DECK	C 0453	87-012-279-080	0E	C-CAP,U 2700P-50 K B GRM	SC1	CX-SNSZ2
O	TAPE DECK	C 0454	87-012-279-080	0E	C-CAP,U 2700P-50 K B GRM	SC1	CX-SNSZ2
O	TAPE DECK	C 0455	87-012-279-080	0E	C-CAP,U 2700P-50 K B GRM	SC1	CX-SNSZ2
O	TAPE DECK	C 0456	87-012-286-080	0E	C-CAP,U 0.01-25 K B	SC1	CX-SNSZ2
O	TAPE DECK	C 0457	87-A12-361-080	0E	CAP,M 5600P-100 J CP	SC1	CX-SNSZ2
O	TAPE DECK	C 0460	87-010-759-080	0E	C-CAP,U 0.1-25 Z F	SC1	CX-SNSZ2
O	TAPE DECK	C 0461	87-012-158-080	0E	C-CAP,S 390P-50 J CH GRM	SC1	CX-SNSZ2
O	TAPE DECK	C 0462	87-012-158-080	0E	C-CAP,S 390P-50 J CH GRM	SC1	CX-SNSZ2
O	TAPE DECK	C 0470	87-A10-039-080	0E	C-CAP,U 470P-50 J CH	SC1	CX-SNSZ2
X	TAPE DECK	CLP0302	87-A60-884-010	0E	PIN,DIAL COATING-SHS	SC1	CX-SNSZ2
O	TAPE DECK	CN 0351	87-A60-625-010	0E	CONN,8P V 2MM JMT	SC1	CX-SNSZ2
O	TAPE DECK	CN 0401	87-A60-620-010	0E	CONN,3P V 2MM JMT	SC1	CX-SNSZ2
S	TAPE DECK	D 0401	87-020-465-080	0E	DIODE,1SS133	SC1	CX-SNSZ2
X	TAPE DECK	FB 0401	88-100-000-010	0E	PLATING-JW, 0.58 SN95	SC1	CX-SNSZ2
S	TAPE DECK	IC 0401	87-A21-419-040	0E	C-IC,NJM14558MD-TE2	SC1	CX-SNSZ2
S	TAPE DECK	IC 0471	87-A21-419-040	0E	C-IC,NJM14558MD-TE2	SC1	CX-SNSZ2
X	TAPE DECK	JR 0301	88-118-000-080	0E	C-JUMPER,S	SC1	CX-SNSZ2
X	TAPE DECK	JR 0302	88-118-000-080	0E	C-JUMPER,S	SC1	CX-SNSZ2
X	TAPE DECK	JR 0303	88-118-000-080	0E	C-JUMPER,S	SC1	CX-SNSZ2
X	TAPE DECK	JR 0304	88-118-000-080	0E	C-JUMPER,S	SC1	CX-SNSZ2
X	TAPE DECK	JR 0305	88-118-000-080	0E	C-JUMPER,S	SC1	CX-SNSZ2
X	TAPE DECK	JR 0306	88-129-000-080	0E	C-JUMPER,3216	SC1	CX-SNSZ2
X	TAPE DECK	JR 0307	88-118-000-080	0E	C-JUMPER,S	SC1	CX-SNSZ2
X	TAPE DECK	JR 0308	88-129-000-080	0E	C-JUMPER,3216	SC1	CX-SNSZ2
X	TAPE DECK	JR 0309	88-129-000-080	0E	C-JUMPER,3216	SC1	CX-SNSZ2
X	TAPE DECK	JR 0310	88-129-000-080	0E	C-JUMPER,3216	SC1	CX-SNSZ2
X	TAPE DECK	JR 0311	88-118-000-080	0E	C-JUMPER,S	SC1	CX-SNSZ2
X	TAPE DECK	JR 0320	88-118-000-080	0E	C-JUMPER,S	SC1	CX-SNSZ2

PARTS LIST

! = Δ SAFTY PARTS
 C = Components marked

All components used on this model at the production line are shown in this service manual.

However, please note that not all components will be available as spare parts for after-sales service.

Components marked S and O are designated as spare parts for service and will be stocked at the spare parts centers.

Components marked X and R are not designated as spare parts for after sales service, and will not be stocked at the spare parts centers.

K NO. = Only use japanese.

! C	UNIT NAME	REF NO.	PARTS CODE	K NO.	DESCRIPTION	SUFFIX	MODEL NAME
X	TAPE DECK	JR 0401	88-118-000-080	0E	C-JUMPER, S	SC1	CX-SNSZ2
X	TAPE DECK	JR 0402	88-118-000-080	0E	C-JUMPER, S	SC1	CX-SNSZ2
X	TAPE DECK	JR 0403	88-118-000-080	0E	C-JUMPER, S	SC1	CX-SNSZ2
X	TAPE DECK	JR 0404	88-118-000-080	0E	C-JUMPER, S	SC1	CX-SNSZ2
X	TAPE DECK	JR 0405	88-118-000-080	0E	C-JUMPER, S	SC1	CX-SNSZ2
X	TAPE DECK	JR 0406	88-118-000-080	0E	C-JUMPER, S	SC1	CX-SNSZ2
O	TAPE DECK	L 0451	87-007-342-010	0E	COIL, OSC 85KHZ BIAS	SC1	CX-SNSZ2
S	TAPE DECK	Q 0401	87-A30-091-080	1E	FET, 2SJ460	SC1	CX-SNSZ2
S	TAPE DECK	Q 0402	87-A30-091-080	1E	FET, 2SJ460	SC1	CX-SNSZ2
S	TAPE DECK	Q 0403	87-A30-090-080	0E	FET, 2SK2541	SC1	CX-SNSZ2
S	TAPE DECK	Q 0404	87-A30-090-080	0E	FET, 2SK2541	SC1	CX-SNSZ2
S	TAPE DECK	Q 0405	87-A30-091-080	1E	FET, 2SJ460	SC1	CX-SNSZ2
S	TAPE DECK	Q 0406	87-A30-062-080	0E	C-TR, KRC104S	SC1	CX-SNSZ2
S	TAPE DECK	Q 0407	87-A30-091-080	1E	FET, 2SJ460	SC1	CX-SNSZ2
S	TAPE DECK	Q 0408	87-A30-091-080	1E	FET, 2SJ460	SC1	CX-SNSZ2
S	TAPE DECK	Q 0409	87-A30-075-080	0E	C-TR, 2SA1235F	SC1	CX-SNSZ2
S	TAPE DECK	Q 0410	87-A30-075-080	0E	C-TR, 2SA1235F	SC1	CX-SNSZ2
S	TAPE DECK	Q 0443	87-A30-075-080	0E	C-TR, 2SA1235F	SC1	CX-SNSZ2
S	TAPE DECK	Q 0444	87-A30-075-080	0E	C-TR, 2SA1235F	SC1	CX-SNSZ2
S	TAPE DECK	Q 0451	87-A30-318-080	0E	TR, CSA952K	SC1	CX-SNSZ2
S	TAPE DECK	Q 0453	87-A30-492-080	0E	TR, 2SC5343G	SC1	CX-SNSZ2
S	TAPE DECK	Q 0454	87-A30-492-080	0E	TR, 2SC5343G	SC1	CX-SNSZ2
X	TAPE DECK	R 0401	88-121-823-080	0E	RES, 82K-1/8W J	SC1	CX-SNSZ2
X	TAPE DECK	R 0402	88-121-823-080	0E	RES, 82K-1/8W J	SC1	CX-SNSZ2
X	TAPE DECK	R 0403	88-118-102-080	0E	C-RES, S 1K-1/10W J	SC1	CX-SNSZ2
X	TAPE DECK	R 0404	88-118-102-080	0E	C-RES, S 1K-1/10W J	SC1	CX-SNSZ2
X	TAPE DECK	R 0405	88-118-822-080	0E	C-RES, S 8.2K-1/10W J	SC1	CX-SNSZ2
X	TAPE DECK	R 0406	88-118-822-080	0E	C-RES, S 8.2K-1/10W J	SC1	CX-SNSZ2
X	TAPE DECK	R 0407	88-118-102-080	0E	C-RES, S 1K-1/10W J	SC1	CX-SNSZ2
X	TAPE DECK	R 0408	88-118-102-080	0E	C-RES, S 1K-1/10W J	SC1	CX-SNSZ2
X	TAPE DECK	R 0409	88-118-122-080	0E	C-RES, S 1.2K-1/10W J	SC1	CX-SNSZ2
X	TAPE DECK	R 0410	88-118-122-080	0E	C-RES, S 1.2K-1/10W J	SC1	CX-SNSZ2
X	TAPE DECK	R 0411	88-118-153-080	0E	C-RES, S 15K-1/10W J	SC1	CX-SNSZ2
X	TAPE DECK	R 0412	88-118-153-080	0E	C-RES, S 15K-1/10W J	SC1	CX-SNSZ2
X	TAPE DECK	R 0413	88-118-222-080	0E	C-RES, S 2.2K-1/10W J	SC1	CX-SNSZ2
X	TAPE DECK	R 0414	88-118-222-080	0E	C-RES, S 2.2K-1/10W J	SC1	CX-SNSZ2
X	TAPE DECK	R 0415	88-118-681-080	0E	C-RES, S 680-1/10W J	SC1	CX-SNSZ2
X	TAPE DECK	R 0416	88-118-681-080	0E	C-RES, S 680-1/10W J	SC1	CX-SNSZ2
X	TAPE DECK	R 0417	88-121-103-080	0E	RES, 10K-1/8W J	SC1	CX-SNSZ2
X	TAPE DECK	R 0418	88-118-103-080	0E	C-RES, S 10K-1/10W J	SC1	CX-SNSZ2
X	TAPE DECK	R 0419	88-118-222-080	0E	C-RES, S 2.2K-1/10W J	SC1	CX-SNSZ2
X	TAPE DECK	R 0420	88-121-222-080	0E	RES, 2.2K-1/8W J	SC1	CX-SNSZ2
X	TAPE DECK	R 0421	88-118-223-080	0E	C-RES, S 22K-1/10W J	SC1	CX-SNSZ2
X	TAPE DECK	R 0422	88-118-223-080	0E	C-RES, S 22K-1/10W J	SC1	CX-SNSZ2
X	TAPE DECK	R 0423	88-118-183-080	0E	C-RES, S 18K-1/10W J	SC1	CX-SNSZ2
X	TAPE DECK	R 0424	88-118-183-080	0E	C-RES, S 18K-1/10W J	SC1	CX-SNSZ2
X	TAPE DECK	R 0453	88-118-152-080	0E	C-RES, S 1.5K-1/10W J	SC1	CX-SNSZ2
X	TAPE DECK	R 0454	88-121-829-080	0E	RES, 8.2-1/8W J	SC1	CX-SNSZ2
X	TAPE DECK	R 0455	88-118-183-080	0E	C-RES, S 18K-1/10W J	SC1	CX-SNSZ2
X	TAPE DECK	R 0456	88-118-183-080	0E	C-RES, S 18K-1/10W J	SC1	CX-SNSZ2
X	TAPE DECK	R 0457	88-128-100-080	0E	C-RES, 10-1/8W J	SC1	CX-SNSZ2
X	TAPE DECK	R 0458	88-118-104-080	0E	C-RES, S 100K-1/10W J	SC1	CX-SNSZ2
X	TAPE DECK	R 0459	88-130-100-080	0E	RES, 10-1/4W J	SC1	CX-SNSZ2
X	TAPE DECK	R 0460	88-121-689-080	0E	RES, 6.8-1/8W J	SC1	CX-SNSZ2
X	TAPE DECK	R 0463	88-121-829-080	0E	RES, 8.2-1/8W J	SC1	CX-SNSZ2
X	TAPE DECK	R 0464	88-130-150-080	0E	RES, 15-1/4W J	SC1	CX-SNSZ2
X	TAPE DECK	R 0465	88-118-332-080	0E	C-RES, S 3.3K-1/10W J	SC1	CX-SNSZ2
X	TAPE DECK	R 0466	88-118-332-080	0E	C-RES, S 3.3K-1/10W J	SC1	CX-SNSZ2
X	TAPE DECK	R 0471	88-118-104-080	0E	C-RES, S 100K-1/10W J	SC1	CX-SNSZ2
X	TAPE DECK	R 0472	88-118-104-080	0E	C-RES, S 100K-1/10W J	SC1	CX-SNSZ2
X	TAPE DECK	R 0473	88-118-104-080	0E	C-RES, S 100K-1/10W J	SC1	CX-SNSZ2
X	TAPE DECK	R 0474	88-118-104-080	0E	C-RES, S 100K-1/10W J	SC1	CX-SNSZ2
X	TAPE DECK	R 0475	88-118-224-080	0E	C-RES, S 220K-1/10W J	SC1	CX-SNSZ2
X	TAPE DECK	R 0476	88-118-682-080	0E	C-RES, S 6.8K-1/10W J	SC1	CX-SNSZ2
X	TAPE DECK	R 0477	88-118-471-080	0E	C-RES, S 470-1/10W J	SC1	CX-SNSZ2
X	TAPE DECK	R 0478	88-118-471-080	0E	C-RES, S 470-1/10W J	SC1	CX-SNSZ2
X	TAPE DECK	R 0479	88-118-560-080	0E	C-RES, S 56-1/10W J	SC1	CX-SNSZ2
X	TAPE DECK	R 0480	88-118-560-080	0E	C-RES, S 56-1/10W J	SC1	CX-SNSZ2
X	TAPE DECK	R 0481	88-118-680-080	0E	C-RES, S 68-1/10W J	SC1	CX-SNSZ2
X	TAPE DECK	R 0482	88-118-680-080	0E	C-RES, S 68-1/10W J	SC1	CX-SNSZ2

PARTS LIST

! = Δ SAFTY PARTS
 C = Components marked

All components used on this model at the production line are shown in this service manual.

However, please note that not all components will be available as spare parts for after-sales service.

Components marked S and O are designated as spare parts for service and will be stocked at the spare parts centers.

Components marked X and R are not designated as spare parts for after sales service, and will not be stocked at the spare parts centers.

K NO. = Only use Japanese.

! C	UNIT NAME	REF NO.	PARTS CODE	K NO.	DESCRIPTION	SUFFIX	MODEL NAME
X	TAPE DECK	R 0483	88-118-183-080	0E	C-RES,S 18K-1/10W J	SC1	CX-SNSZ2
X	TAPE DECK	R 0484	88-118-183-080	0E	C-RES,S 18K-1/10W J	SC1	CX-SNSZ2
X	TAPE DECK	R 0485	88-118-394-080	0E	C-RES,S 390K-1/10W J	SC1	CX-SNSZ2
X	TAPE DECK	R 0486	88-118-394-080	0E	C-RES,S 390K-1/10W J	SC1	CX-SNSZ2
X	TAPE DECK	R 0487	88-118-102-080	0E	C-RES,S 1K-1/10W J	SC1	CX-SNSZ2
X	TAPE DECK	R 0488	88-118-102-080	0E	C-RES,S 1K-1/10W J	SC1	CX-SNSZ2
X	TAPE DECK	R 0489	88-118-472-080	0E	C-RES,S 4.7K-1/10W J	SC1	CX-SNSZ2
X	TAPE DECK	R 0490	88-118-102-080	0E	C-RES,S 1K-1/10W J	SC1	CX-SNSZ2
X	TAPE DECK	R 0491	88-118-102-080	0E	C-RES,S 1K-1/10W J	SC1	CX-SNSZ2
X	TAPE DECK	R 0492	88-121-101-080	0E	RES,100-1/8W J	SC1	CX-SNSZ2
X	TAPE DECK	R 0493	88-118-105-080	0E	C-RES,S 1M-1/10W J	SC1	CX-SNSZ2
O	TUNER(IF)	C 0771	87-010-263-080	0E	CAP,E 100-10 M 11L SME	SC1	CX-SNSZ2
O	TUNER(IF)	C 0772	87-012-286-080	0E	C-CAP,U 0.01-25 K B	SC1	CX-SNSZ2
X	TUNER(IF)	C 0781	88-118-000-080	0E	C-JUMPER,S	SC1	CX-SNSZ2
O	TUNER(IF)	C 0782	87-012-286-080	0E	C-CAP,U 0.01-25 K B	SC1	CX-SNSZ2
O	TUNER(IF)	C 0783	87-012-286-080	0E	C-CAP,U 0.01-25 K B	SC1	CX-SNSZ2
O	TUNER(IF)	C 0784	87-012-286-080	0E	C-CAP,U 0.01-25 K B	SC1	CX-SNSZ2
O	TUNER(IF)	C 0785	87-012-286-080	0E	C-CAP,U 0.01-25 K B	SC1	CX-SNSZ2
O	TUNER(IF)	C 0786	87-012-286-080	0E	C-CAP,U 0.01-25 K B	SC1	CX-SNSZ2
O	TUNER(IF)	C 0788	87-012-167-080	0E	C-CAP,U 5P-50 C CH	SC1	CX-SNSZ2
O	TUNER(IF)	C 0789	87-A10-801-080	0E	C-CAP,S 0.022-16 J B CM	SC1	CX-SNSZ2
O	TUNER(IF)	C 0790	87-A10-801-080	0E	C-CAP,S 0.022-16 J B CM	SC1	CX-SNSZ2
O	TUNER(IF)	C 0791	87-010-759-080	0E	C-CAP,U 0.1-25 Z F	SC1	CX-SNSZ2
O	TUNER(IF)	C 0792	87-012-286-080	0E	C-CAP,U 0.01-25 K B	SC1	CX-SNSZ2
O	TUNER(IF)	C 0793	87-010-404-080	0E	CAP,E 4.7-50 M 11L SME	SC1	CX-SNSZ2
O	TUNER(IF)	C 0795	87-012-286-080	0E	C-CAP,U 0.01-25 K B	SC1	CX-SNSZ2
O	TUNER(IF)	C 0796	87-012-286-080	0E	C-CAP,U 0.01-25 K B	SC1	CX-SNSZ2
O	TUNER(IF)	C 0797	87-010-405-080	0E	CAP,E 10-50 M 11L SME	SC1	CX-SNSZ2
O	TUNER(IF)	C 0798	87-012-286-080	0E	C-CAP,U 0.01-25 K B	SC1	CX-SNSZ2
O	TUNER(IF)	C 0799	87-010-407-080	0E	CAP,E 33-50 M 11L SME	SC1	CX-SNSZ2
O	TUNER(IF)	C 0800	87-010-829-080	0E	C-CAP,U 0.047-16 Z F	SC1	CX-SNSZ2
O	TUNER(IF)	C 0801	87-010-403-080	0E	CAP,E 3.3-50 M 11L SME	SC1	CX-SNSZ2
O	TUNER(IF)	C 0802	87-010-829-080	0E	C-CAP,U 0.047-16 Z F	SC1	CX-SNSZ2
O	TUNER(IF)	C 0803	87-010-787-080	0E	C-CAP,U 0.022-25 K B	SC1	CX-SNSZ2
O	TUNER(IF)	C 0804	87-010-263-080	0E	CAP,E 100-10 M 11L SME	SC1	CX-SNSZ2
O	TUNER(IF)	C 0807	87-010-400-080	0E	CAP,E 0.47-50 M 11L SME	SC1	CX-SNSZ2
O	TUNER(IF)	C 0808	87-010-401-080	0E	CAP,E 1-50 M 11L SME	SC1	CX-SNSZ2
O	TUNER(IF)	C 0809	87-010-401-080	0E	CAP,E 1-50 M 11L SME	SC1	CX-SNSZ2
O	TUNER(IF)	C 0810	87-010-759-080	0E	C-CAP,U 0.1-25 Z F	SC1	CX-SNSZ2
O	TUNER(IF)	C 0814	87-012-286-080	0E	C-CAP,U 0.01-25 K B	SC1	CX-SNSZ2
O	TUNER(IF)	C 0815	87-010-400-080	0E	CAP,E 0.47-50 M 11L SME	SC1	CX-SNSZ2
O	TUNER(IF)	C 0816	87-010-400-080	0E	CAP,E 0.47-50 M 11L SME	SC1	CX-SNSZ2
O	TUNER(IF)	C 0821	87-010-405-080	0E	CAP,E 10-50 M 11L SME	SC1	CX-SNSZ2
X	TUNER(IF)	C 0822	88-118-000-080	0E	C-JUMPER,S	SC1	CX-SNSZ2
O	TUNER(IF)	C 0823	87-010-177-080	0E	C-CAP,S 820P-50 J SL C2012	SC1	CX-SNSZ2
O	TUNER(IF)	C 0824	87-010-404-080	0E	CAP,E 4.7-50 M 11L SME	SC1	CX-SNSZ2
O	TUNER(IF)	C 0825	87-010-596-080	0E	C-CAP,S 0.047-16 K R C2012	SC1	CX-SNSZ2
S	TUNER(IF)	D 0801	87-020-465-080	0E	DIODE,1SS133	SC1	CX-SNSZ2
S	TUNER(IF)	D 0803	87-020-465-080	0E	DIODE,1SS133	SC1	CX-SNSZ2
S	TUNER(IF)	IC 0801	87-A21-560-010	1C	IC,LA1844L-A	SC1	CX-SNSZ2
X	TUNER(IF)	JR 0780	88-129-000-080	0E	C-JUMPER,3216	SC1	CX-SNSZ2
X	TUNER(IF)	JR 0781	88-129-000-080	0E	C-JUMPER,3216	SC1	CX-SNSZ2
X	TUNER(IF)	JR 0785	88-118-000-080	0E	C-JUMPER,S	SC1	CX-SNSZ2
X	TUNER(IF)	JR 0786	88-118-000-080	0E	C-JUMPER,S	SC1	CX-SNSZ2
X	TUNER(IF)	JR 0792	88-118-000-080	0E	C-JUMPER,S	SC1	CX-SNSZ2
O	TUNER(IF)	L 0801	87-A50-608-010	0E	COIL,FM DET-N(TOK)	SC1	CX-SNSZ2
O	TUNER(IF)	L 0802	87-A91-553-010	1B	FLTR,PCFMT-060L (TOK)	SC1	CX-SNSZ2
O	TUNER(IF)	L 0811	87-005-847-080	0E	COIL,2.2UH K CECS	SC1	CX-SNSZ2
X	TUNER(IF)	R 0789	88-118-333-080	0E	C-RES,S 33K-1/10W J	SC1	CX-SNSZ2
X	TUNER(IF)	R 0790	88-118-271-080	0E	C-RES,S 270-1/10W J	SC1	CX-SNSZ2
X	TUNER(IF)	R 0791	88-118-102-080	0E	C-RES,S 1K-1/10W J	SC1	CX-SNSZ2
X	TUNER(IF)	R 0793	88-118-000-080	0E	C-JUMPER,S	SC1	CX-SNSZ2
X	TUNER(IF)	R 0795	88-118-000-080	0E	C-JUMPER,S	SC1	CX-SNSZ2
X	TUNER(IF)	R 0801	88-118-103-080	0E	C-RES,S 10K-1/10W J	SC1	CX-SNSZ2
X	TUNER(IF)	R 0802	88-118-223-080	0E	C-RES,S 22K-1/10W J	SC1	CX-SNSZ2
X	TUNER(IF)	R 0803	88-128-183-080	0E	C-RES, 18K-1/8W J	SC1	CX-SNSZ2
X	TUNER(IF)	R 0804	88-118-000-080	0E	C-JUMPER,S	SC1	CX-SNSZ2
X	TUNER(IF)	R 0805	88-118-332-080	0E	C-RES,S 3.3K-1/10W J	SC1	CX-SNSZ2
X	TUNER(IF)	R 0806	88-118-682-080	0E	C-RES,S 6.8K-1/10W J	SC1	CX-SNSZ2
X	TUNER(IF)	R 0809	88-118-333-080	0E	C-RES,S 33K-1/10W J	SC1	CX-SNSZ2

PARTS LIST

! = Δ SAFTY PARTS
 C = Components marked

All components used on this model at the production line are shown in this service manual.

However, please note that not all components will be available as spare parts for after-sales service.

Components marked S and O are designated as spare parts for service and will be stocked at the spare parts centers.

Components marked X and R are not designated as spare parts for after sales service, and will not be stocked at the spare parts centers.

K NO. = Only use japanese.

! C	UNIT NAME	REF NO.	PARTS CODE	K NO.	DESCRIPTION	SUFFIX	MODEL NAME
X	TUNER (IF)	R 0810	88-118-333-080	0E	C-RES,S 33K-1/10W J	SC1	CX-SNSZ2
X	TUNER (IF)	R 0813	88-118-224-080	0E	C-RES,S 220K-1/10W J	SC1	CX-SNSZ2
X	TUNER (IF)	R 0814	88-118-105-080	0E	C-RES,S 1M-1/10W J	SC1	CX-SNSZ2
X	TUNER (IF)	R 0815	88-121-682-080	0E	RES,6.8K-1/8W J	SC1	CX-SNSZ2
X	TUNER (IF)	R 0818	88-118-103-080	0E	C-RES,S 10K-1/10W J	SC1	CX-SNSZ2
X	TUNER (IF)	R 0821	88-118-000-080	0E	C-JUMPER,S	SC1	CX-SNSZ2
X	TUNER (IF)	R 0823	88-118-333-080	0E	C-RES,S 33K-1/10W J	SC1	CX-SNSZ2
X	TUNER (IF)	R 0826	88-118-223-080	0E	C-RES,S 22K-1/10W J	SC1	CX-SNSZ2
O	TUNER (PLL)	C 0971	87-010-381-080	0E	CAP,E 330-16 M SME	SC1	CX-SNSZ2
O	TUNER (PLL)	C 0972	87-010-404-080	0E	CAP,E 4.7-50 M 11L SME	SC1	CX-SNSZ2
O	TUNER (PLL)	C 0973	87-010-197-080	0E	C-CAP,S 0.01-25 K B C2012	SC1	CX-SNSZ2
O	TUNER (PLL)	C 0974	87-010-197-080	0E	C-CAP,S 0.01-25 K B C2012	SC1	CX-SNSZ2
O	TUNER (PLL)	C 0979	87-012-195-080	0E	C-CAP,U 100P-50 J CH	SC1	CX-SNSZ2
O	TUNER (PLL)	C 0981	87-010-260-080	0E	CAP,E 47-25 M 11L SME	SC1	CX-SNSZ2
O	TUNER (PLL)	C 0982	87-010-759-080	0E	C-CAP,U 0.1-25 Z F	SC1	CX-SNSZ2
O	TUNER (PLL)	C 0983	87-010-197-080	0E	C-CAP,S 0.01-25 K B C2012	SC1	CX-SNSZ2
O	TUNER (PLL)	C 0984	87-010-197-080	0E	C-CAP,S 0.01-25 K B C2012	SC1	CX-SNSZ2
O	TUNER (PLL)	C 0987	87-010-197-080	0E	C-CAP,S 0.01-25 K B C2012	SC1	CX-SNSZ2
O	TUNER (PLL)	C 0990	87-012-195-080	0E	C-CAP,U 100P-50 J CH	SC1	CX-SNSZ2
O	TUNER (PLL)	C 0991	87-012-176-080	0E	C-CAP,U 15P-50 J CH	SC1	CX-SNSZ2
O	TUNER (PLL)	C 0992	87-012-176-080	0E	C-CAP,U 15P-50 J CH	SC1	CX-SNSZ2
O	TUNER (PLL)	C 0993	87-012-274-080	0E	C-CAP,U 1000P-50 K B	SC1	CX-SNSZ2
O	TUNER (PLL)	C 0994	87-012-195-080	0E	C-CAP,U 100P-50 J CH	SC1	CX-SNSZ2
O	TUNER (PLL)	C 0995	87-012-274-080	0E	C-CAP,U 1000P-50 K B	SC1	CX-SNSZ2
O	TUNER (PLL)	C 0996	87-012-195-080	0E	C-CAP,U 100P-50 J CH	SC1	CX-SNSZ2
O	TUNER (PLL)	C 0997	87-010-759-080	0E	C-CAP,U 0.1-25 Z F	SC1	CX-SNSZ2
O	TUNER (PLL)	C 0998	87-010-260-080	0E	CAP,E 47-25 M 11L SME	SC1	CX-SNSZ2
O	TUNER (PLL)	C 0999	87-A11-155-080	0E	CAP,TC U 0.01-16 Z F	SC1	CX-SNSZ2
S	TUNER (PLL)	D 0991	87-A40-748-080	0E	ZENER,UZ5.6BSA	SC1	CX-SNSZ2
S	TUNER (PLL)	D 0993	87-A40-760-080	0E	ZENER,UZ9.1BSA	SC1	CX-SNSZ2
S	TUNER (PLL)	IC 0991	87-070-127-110	1C	IC,LC72131D	SC1	CX-SNSZ2
X	TUNER (PLL)	JR 0972	88-118-000-080	0E	C-JUMPER,S	SC1	CX-SNSZ2
X	TUNER (PLL)	JR 0973	88-129-000-080	0E	C-JUMPER,3216	SC1	CX-SNSZ2
X	TUNER (PLL)	JR 0974	88-118-000-080	0E	C-JUMPER,S	SC1	CX-SNSZ2
X	TUNER (PLL)	JR 0976	88-118-000-080	0E	C-JUMPER,S	SC1	CX-SNSZ2
X	TUNER (PLL)	JR 0977	88-118-000-080	0E	C-JUMPER,S	SC1	CX-SNSZ2
X	TUNER (PLL)	JR 0988	88-118-000-080	0E	C-JUMPER,S	SC1	CX-SNSZ2
S	TUNER (PLL)	Q 0981	87-A30-234-080	0E	TR,CSC4115BC	SC1	CX-SNSZ2
X	TUNER (PLL)	R 0975	88-118-562-080	0E	C-RES,S 5.6K-1/10W J	SC1	CX-SNSZ2
X	TUNER (PLL)	R 0976	88-118-102-080	0E	C-RES,S 1K-1/10W J	SC1	CX-SNSZ2
X	TUNER (PLL)	R 0977	88-118-102-080	0E	C-RES,S 1K-1/10W J	SC1	CX-SNSZ2
X	TUNER (PLL)	R 0978	88-118-681-080	0E	C-RES,S 680-1/10W J	SC1	CX-SNSZ2
X	TUNER (PLL)	R 0980	88-118-684-080	0E	C-RES,S 680K-1/10W J	SC1	CX-SNSZ2
X	TUNER (PLL)	R 0981	88-121-471-080	0E	RES,470-1/8W J	SC1	CX-SNSZ2
X	TUNER (PLL)	R 0983	88-118-101-080	0E	C-RES,S 100-1/10W J	SC1	CX-SNSZ2
X	TUNER (PLL)	R 0984	88-121-181-080	0E	RES,180-1/8W J	SC1	CX-SNSZ2
X	TUNER (PLL)	R 0985	88-121-471-080	0E	RES,470-1/8W J	SC1	CX-SNSZ2
X	TUNER (PLL)	R 0986	88-118-222-080	0E	C-RES,S 2.2K-1/10W J	SC1	CX-SNSZ2
X	TUNER (PLL)	R 0988	88-118-103-080	0E	C-RES,S 10K-1/10W J	SC1	CX-SNSZ2
X	TUNER (PLL)	R 0989	88-121-102-080	0E	RES,1K-1/8W J	SC1	CX-SNSZ2
X	TUNER (PLL)	R 0990	88-118-563-080	0E	C-RES,S 56K-1/10W J	SC1	CX-SNSZ2
X	TUNER (PLL)	R 0992	88-118-103-080	0E	C-RES,S 10K-1/10W J	SC1	CX-SNSZ2
X	TUNER (PLL)	R 0994	88-118-103-080	0E	C-RES,S 10K-1/10W J	SC1	CX-SNSZ2
X	TUNER (PLL)	R 0996	88-118-103-080	0E	C-RES,S 10K-1/10W J	SC1	CX-SNSZ2
X	TUNER (PLL)	R 0997	88-118-154-080	0E	C-RES,S 150K-1/10W J	SC1	CX-SNSZ2
X	TUNER (PLL)	R 0998	88-118-102-080	0E	C-RES,S 1K-1/10W J	SC1	CX-SNSZ2
X	TUNER (PLL)	R 0999	88-118-103-080	0E	C-RES,S 10K-1/10W J	SC1	CX-SNSZ2
O	TUNER (PLL)	X 0991	87-A70-061-010	1A	VIB,XTAL 4.500MHZ CSA-309	SC1	CX-SNSZ2
O	TUNER (RF)	C 0836	87-012-286-080	0E	C-CAP,U 0.01-25 K B	SC1	CX-SNSZ2
O	TUNER (RF)	C 0837	87-012-286-080	0E	C-CAP,U 0.01-25 K B	SC1	CX-SNSZ2
O	TUNER (RF)	C 0842	87-012-286-080	0E	C-CAP,U 0.01-25 K B	SC1	CX-SNSZ2
X	TUNER (RF)	C 0843	88-118-000-080	0E	C-JUMPER,S	SC1	CX-SNSZ2
O	TUNER (RF)	C 0844	87-012-286-080	0E	C-CAP,U 0.01-25 K B	SC1	CX-SNSZ2
X	TUNER (RF)	C 0845	88-118-000-080	0E	C-JUMPER,S	SC1	CX-SNSZ2
X	TUNER (RF)	C 0846	88-118-000-080	0E	C-JUMPER,S	SC1	CX-SNSZ2
X	TUNER (RF)	C 0847	88-118-000-080	0E	C-JUMPER,S	SC1	CX-SNSZ2
X	TUNER (RF)	C 0848	88-118-000-080	0E	C-JUMPER,S	SC1	CX-SNSZ2
X	TUNER (RF)	C 0849	88-118-000-080	0E	C-JUMPER,S	SC1	CX-SNSZ2
O	TUNER (RF)	C 0850	87-010-260-080	0E	CAP,E 47-25 M 11L SME	SC1	CX-SNSZ2
O	TUNER (RF)	C 0851	87-012-286-080	0E	C-CAP,U 0.01-25 K B	SC1	CX-SNSZ2

PARTS LIST

! = Δ SAFTY PARTS
 C = Components marked

All components used on this model at the production line are shown in this service manual.

However, please note that not all components will be available as spare parts for after-sales service.

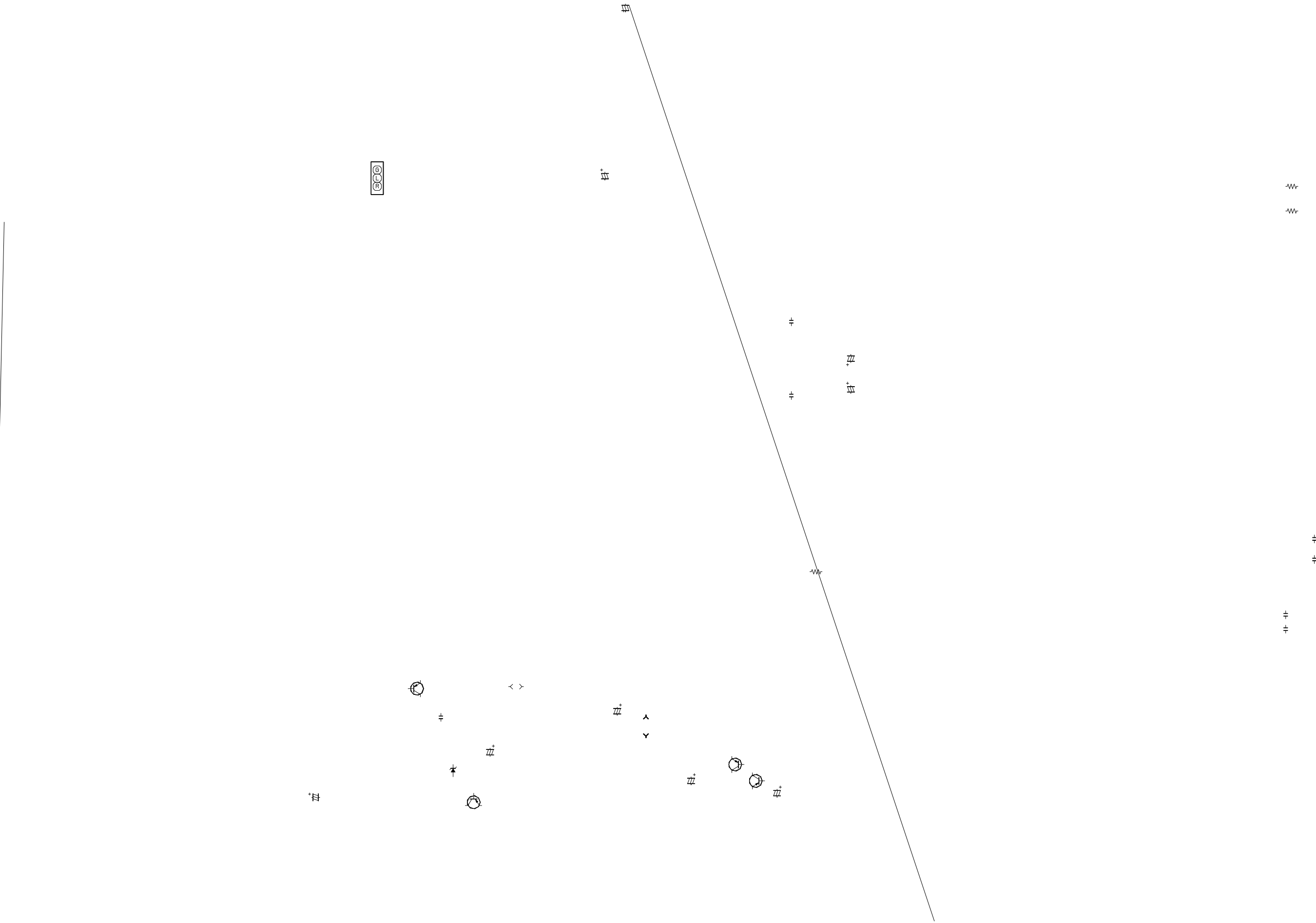
Components marked S and O are designated as spare parts for service and will be stocked at the spare parts centers.

Components marked X and R are not designated as spare parts for after sales service, and will not be stocked at the spare parts centers.

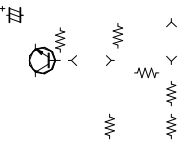
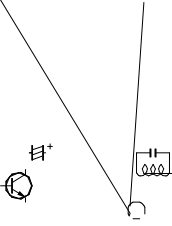
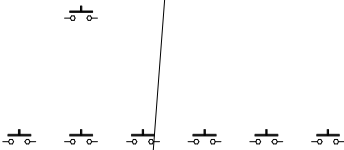
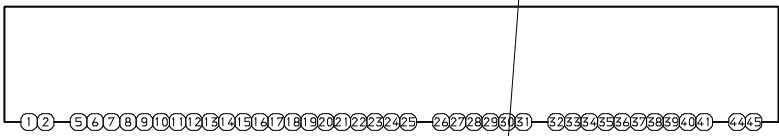
K NO. = Only use Japanese.

! C	UNIT NAME	REF NO.	PARTS CODE	K NO.	DESCRIPTION	SUFFIX	MODEL NAME
O	TUNER(RF)	C 0852	87-012-286-080	0E	C-CAP,U 0.01-25 K B	SC1	CX-SNSZ2
O	TUNER(RF)	C 0853	87-012-286-080	0E	C-CAP,U 0.01-25 K B	SC1	CX-SNSZ2
O	TUNER(RF)	C 0858	87-010-759-080	0E	C-CAP,U 0.1-25 Z F	SC1	CX-SNSZ2
O	TUNER(RF)	C 0859	87-010-759-080	0E	C-CAP,U 0.1-25 Z F	SC1	CX-SNSZ2
O	TUNER(RF)	C 0860	87-012-286-080	0E	C-CAP,U 0.01-25 K B	SC1	CX-SNSZ2
O	TUNER(RF)	C 0961	87-012-170-080	0E	C-CAP,U 8P-50 D CH	SC1	CX-SNSZ2
O	TUNER(RF)	C 0962	87-010-401-080	0E	CAP,E 1-50 M 11L SME	SC1	CX-SNSZ2
O	TUNER(RF)	CF 0831	87-008-261-010	1A	FLTR,CF SFE10.7MA5	SC1	CX-SNSZ2
O	TUNER(RF)	CF 0832	87-008-261-010	1A	FLTR,CF SFE10.7MA5	SC1	CX-SNSZ2
O	TUNER(RF)	FFE0831	A8-6ZA-19D-070	1H	6ZA-1 YFEJNC	SC1	CX-SNSZ2
!	O TUNER(RF)	J 0831	87-A60-202-010	1A	TERMINAL,ANT 4P MSP-154V-02	SC1	CX-SNSZ2
X	TUNER(RF)	JR 0831	88-118-000-080	0E	C-JUMPER,S	SC1	CX-SNSZ2
X	TUNER(RF)	JR 0833	88-118-000-080	0E	C-JUMPER,S	SC1	CX-SNSZ2
X	TUNER(RF)	JR 0834	88-118-000-080	0E	C-JUMPER,S	SC1	CX-SNSZ2
X	TUNER(RF)	JR 0835	88-118-000-080	0E	C-JUMPER,S	SC1	CX-SNSZ2
X	TUNER(RF)	JR 0836	88-118-000-080	0E	C-JUMPER,S	SC1	CX-SNSZ2
X	TUNER(RF)	JR 0837	88-118-000-080	0E	C-JUMPER,S	SC1	CX-SNSZ2
X	TUNER(RF)	JR 0838	88-129-000-080	0E	C-JUMPER,3216	SC1	CX-SNSZ2
X	TUNER(RF)	JR 0946	88-118-000-080	0E	C-JUMPER,S	SC1	CX-SNSZ2
X	TUNER(RF)	JR 0947	88-118-000-080	0E	C-JUMPER,S	SC1	CX-SNSZ2
X	TUNER(RF)	JR 0948	88-118-000-080	0E	C-JUMPER,S	SC1	CX-SNSZ2
X	TUNER(RF)	JR 0951	88-118-000-080	0E	C-JUMPER,S	SC1	CX-SNSZ2
X	TUNER(RF)	JR 0954	88-118-000-080	0E	C-JUMPER,S	SC1	CX-SNSZ2
X	TUNER(RF)	JR 0955	88-118-000-080	0E	C-JUMPER,S	SC1	CX-SNSZ2
X	TUNER(RF)	JR 0956	88-118-000-080	0E	C-JUMPER,S	SC1	CX-SNSZ2
O	TUNER(RF)	L 0832	87-005-847-080	0E	COIL,2.2UH K CECS	SC1	CX-SNSZ2
O	TUNER(RF)	L 0951	8A-NF8-667-010	1C	COIL,AM PACK 4 (TOK)	SC1	CX-SNSZ2
S	TUNER(RF)	Q 0835	89-327-143-080	0E	C-TR,2SC2714O	SC1	CX-SNSZ2
S	TUNER(RF)	Q 0836	87-A30-489-080	0E	C-TR,KRA107S	SC1	CX-SNSZ2
X	TUNER(RF)	R 0832	88-118-391-080	0E	C-RES,S 390-1/10W J	SC1	CX-SNSZ2
X	TUNER(RF)	R 0836	88-118-102-080	0E	C-RES,S 1K-1/10W J	SC1	CX-SNSZ2
X	TUNER(RF)	R 0839	88-118-151-080	0E	C-RES,S 150-1/10W J	SC1	CX-SNSZ2
X	TUNER(RF)	R 0840	88-118-221-080	0E	C-RES,S 220-1/10W J	SC1	CX-SNSZ2
X	TUNER(RF)	R 0850	88-118-103-080	0E	C-RES,S 10K-1/10W J	SC1	CX-SNSZ2
X	TUNER(RF)	R 0851	88-118-470-080	0E	C-RES,S 47-1/10W J	SC1	CX-SNSZ2
X	TUNER(RF)	R 0853	88-118-102-080	0E	C-RES,S 1K-1/10W J	SC1	CX-SNSZ2
X	TUNER(RF)	R 0854	88-118-331-080	0E	C-RES,S 330-1/10W J	SC1	CX-SNSZ2
X	TUNER(RF)	R 0855	88-118-183-080	0E	C-RES,S 18K-1/10W J	SC1	CX-SNSZ2
X	TUNER(RF)	R 0856	88-118-103-080	0E	C-RES,S 10K-1/10W J	SC1	CX-SNSZ2
X	TUNER(RF)	R 0857	88-118-181-080	0E	C-RES,S 180-1/10W J	SC1	CX-SNSZ2
X	TUNER(RF)	R 0858	88-118-101-080	0E	C-RES,S 100-1/10W J	SC1	CX-SNSZ2
X	TUNER(RF)	R 0860	88-118-101-080	0E	C-RES,S 100-1/10W J	SC1	CX-SNSZ2
X	TUNER(RF)	R 0945	88-118-104-080	0E	C-RES,S 100K-1/10W J	SC1	CX-SNSZ2
X	TUNER(RF)	R 0949	88-118-000-080	0E	C-JUMPER,S	SC1	CX-SNSZ2
X	TUNER(RF)	R 0962	88-121-221-080	0E	RES,220-1/8W J	SC1	CX-SNSZ2
X	TUNER(RF)	R 0963	88-118-330-080	0E	C-RES,S 33-1/10W J	SC1	CX-SNSZ2
X	TUNER(RF)	R 0964	88-118-000-080	0E	C-JUMPER,S	SC1	CX-SNSZ2

SCHEMATIC DIAGRAM - 1 (MAIN 1/4 : AMP SECTION)



SCHEMATIC DIAGRAM - 2 (MAIN 2/4 : MICON SECTION)



⊥

⊥

⊥

⊥

⊥

⊥

⊥

⊥

⊥

⊥

⊥

⊥

⊥

⊥

⊥

⊥

⊥

⊥

⊥

⊥

⊥

>

>

⊥

⊥

>

>

>

>

>

>

>

>

>

>

>

>

>

>

>

>

>

>

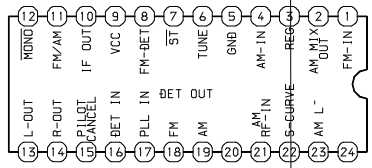
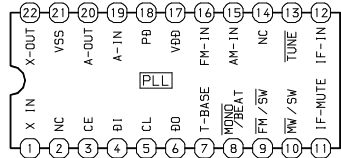
>

>

>

>

SCHEMATIC DIAGRAM - 3 (MAIN 3/4 : TUNER SECTION)



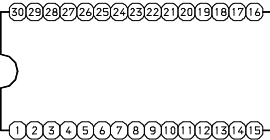
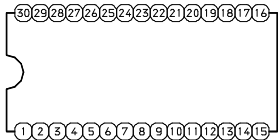
SCHEMATIC DIAGRAM - 4 (MAIN 4/4 : CD SECTION)



+ +

~
~
~
~
~

≡ ≡ ≡



~ -

~

