

SERVICE MANUAL

COMPACT DISC STEREO
CASSETTE RECEIVER

BASIC TAPE MECHANISM : 2ZM-3MK2 YPR4N
BASIC CD MECHANISM : 6ZG-1 YZRNDKM

SYSTEM	CD CASSEIVER	SPEAKERS	REMOTE CONTROL
NSX-T96	CX-NT96	SX-WNT99	RC-ZAS04

- This Service Manual is the "Supplement" and replaces "Simple Manual" NSX-T96, (S/M Code No. 09-005-426-5T3).
- This Service Manual contains information about the difference between NSX-T96 (LH) and NSX-T99 (LH).
If requiring other information, see Service Manual of NSX-T99/99E (LH,HA), (S/M Code No. 09-003-426-5R1).
- If requiring information about the CD mechanisim, see Service Manual of 6ZG-1, (S/M Code No. 09-001-338-7N2)

SPECIFICATIONS

<FM Tuner section>

Tuning range	87.5 MHz to 108 MHz
Usable sensitivity(IHF)	13.2 dBf
Antenna terminals	75 ohms (unbalanced)

<AM Tuner section>

Tuning range	531 kHz to 1602 kHz (9 kHz step) 530 kHz to 1710 kHz (10 kHz step)
Usable sensitivity	350 uV/m
Antenna	Loop antenna

<Amplifier section>

Mid-high frequency amplifier

Power output*	Rated: 56 W + 56 W (8 ohms, THD 1 %,1 kHz) Reference: 70 W + 70 W (8 ohms, THD 10 %,1 kHz)
Total harmonic distortion	0.3 % (28 W, 1 kHz, 8 ohms, DIN AUDIO)

Low frequency amplifier

Power output*	Rated: 167 W + 167 W (6 ohms, THD 1 %,75 Hz) Reference: 210 W + 210 W (6 ohms, THD 10 %,75 Hz)
Total harmonic distortion	0.3 % (84 W,75 Hz,6 ohms, DIN AUDIO)

* without connecting to surround speakers

Inputs	VIDEO/AUX : 300 mV (adjustable) MD : 300 mV (adjustable) MIC1,MIC2 : 1.0 mV (10 kohms) LINE OUT : 150 mV
---------------	---

Outputs

SPEAKERS HIGH FREQ :
accept speakers of 8 ohms or more
SPEAKERS LOW FREQ :
accept speakers of 6 ohms or more
SURROUND SPEAKERS : accept
speakers of 8 to 16 ohms
PHONES (stereo jack) : accepts
headphones of 32 ohms or more

<Cassette deck section>

Track format	4 tracks, 2 channels stereo
Frequency response	CrO2 tape: 50 Hz – 16000 Hz Normal tape: 50 Hz – 15000 Hz
Signal to noise ratio	60dB (Dolby B NR ON, CrO2 tape peak level)
Recording system	AC bias
Heads	Deck 1: Playback head x 1 Deck 2: Recording/Playback head x 1, erase head x 1

<Compact disc player section>

Laser	Semiconductor laser ($\lambda = 780 \text{ nm}$)
D-A converter	1 bit dual
Signal-to-noise ratio	83 dB (1 kHz, 0 dB)
Harmonic distortion	0.05 % (1 kHz, 0 dB)
Wow and flutter	Unmeasurable

<Speaker system SX-WNT99>

Cabinet type	4 way, built-in subwoofer
Speakers	Subwoofer : 200 mm ($7\frac{7}{8}$ in.) cone type Mid range: 100 mm ($3\frac{15}{16}$ in.) cone type Tweeter : 60 mm ($2\frac{3}{8}$ in.) cone type Super Tweeter : 20 mm ($\frac{13}{16}$ in.) ceramic type

Impedance


Output sound pressure level	87 dB/W/m
Dimensions (W x H x D)	260 x 463 x 314 mm ($10\frac{1}{4}$ x $18\frac{1}{4}$ x $12\frac{3}{8}$ in.)
Weight	8.0 kg (17 lbs. 10 oz)

<General>

Power requirements	120 V/220-230 V/240 V (switchable) 50/60Hz
Power consumption	275W
Dimensions of main unit	300 x 382.6 x 396.4mm ($11\frac{7}{8}$ x $15\frac{1}{8}$ x $15\frac{5}{8}$ in.)
Weight of main unit	13.7 kg (30 lbs. 3 oz)

Standby power consumption

If the power-economizing mode is OFF: 36 W
If the power-economizing mode is ON: 0.9 W

- Design and specifications are subject to change without notice.
- Dolby noise reduction manufactured under license from Dolby Laboratories Licensing Corporation.
"DOLBY" and the double-D symbol  are trademarks of Dolby Laboratories Licensing Corporation.
- The word "BBE" and the "BBE symbol" are trademarks of BBE Sound, Inc.
Under license from BBE Sound, Inc.

ELECTRICAL MAIN PARTS LIST

REF. NO.	PART NO.	KANRI NO.	DESCRIPTION	REF. NO.	PART NO.	KANRI NO.	DESCRIPTION
IC							
	8A-NF3-635-010		C-IC,LC876596W-5P49		87-A40-749-080		ZENER,UZ5.6BSB
	87-A21-482-010		IC,RPM6938-H4		87-020-465-080		DIODE,1SS133
	87-A20-869-040		C-IC,M62449FP		87-A40-438-080		ZENER,MTZJ4.7A
	87-A21-398-010		IC,STK490-110		87-017-149-080		ZENER,HZS6A2L
	87-A20-355-010		IC,CXA1553P	MAIN C.B			
	87-A20-783-040		C-IC,BA7762AFS	C3	87-012-368-080		C-CAP,S 0.1-50 F
	87-A21-577-040		C-IC,M61506FP	C4	87-012-368-080		C-CAP,S 0.1-50 F
	87-070-289-040		IC,BU 2092F	C21	87-016-035-090		CAP, E 6800-35 VR
	87-A21-021-040		C-IC,BU2099FV	C22	87-016-035-090		CAP, E 6800-35 VR
	87-A21-018-040		C-IC,M65849BFP631D	C25	87-010-990-080		CAP,E 33-100 SME
	87-A21-452-030		C-IC,BD3876KS2	C26	87-010-990-080		CAP,E 33-100 SME
	87-A21-051-040		C-IC,BU9990-03FS	C27	87-010-990-080		CAP,E 33-100 SME
	87-A21-560-010		IC,LA1844L-A	C28	87-010-990-080		CAP,E 33-100 SME
	87-070-127-110		IC,LC72131 D	C31	87-010-263-080		CAP, ELECT 100-10V
	87-020-454-010		IC,DN 6851	C32	87-010-197-080		CAP, CHIP 0.01 DM
TRANSISTOR				C34	87-010-247-080		CAP, ELECT 100-50V
	87-026-245-080		TR,DTC114ES	C35	87-010-406-080		CAP, ELECT 22-50V
	87-A30-217-010		TR,2SB1436(R)	C36	87-010-381-080		CAP, ELECT 330-16V
	87-A30-198-080		TR,KTC3199GR	C38	87-010-393-080		CAP, ELECT 100-35V
	89-213-702-010		TR,2SB1370 (1.8W)	C39	87-010-393-080		CAP, ELECT 100-35V
	87-A30-218-080		TR,2SB1237(Q)	C40	87-010-190-080		S CHIP F 0.01
	87-A30-087-080		C-FET,2SK2158	C60	87-010-403-080		CAP, ELECT 3.3-50V
	87-A30-086-040		C-TR,CSD1306E	C80	87-010-401-080		CAP, ELECT 1-50V
	87-A30-076-080		C-TR,2SC3052F	C81	87-010-374-080		CAP, ELECT 47-10V
	87-A30-107-070		C-TR,CMBT5401	C82	87-010-260-080		CAP, ELECT 47-25V
	87-A30-074-080		C-TR,RT1P 141C	C104	87-010-196-080		CHIP CAPACITOR,0.1-25
	87-A30-190-080		TR,CC5551	C105	87-010-196-080		CHIP CAPACITOR,0.1-25
	87-A30-204-010		TR,2SD2439	C111	87-010-401-080		CAP, ELECT 1-50V
	87-A30-205-010		TR,2SB1588	C112	87-010-401-080		CAP, ELECT 1-50V
	87-A30-106-040		C-TR,CMBT5551	C115	87-010-401-080		CAP, ELECT 1-50V
	87-A30-276-040		C-TR,DTA143EKA	C116	87-010-401-080		CAP, ELECT 1-50V
	87-A30-063-080		C-TR,KRA104S	C121	87-010-406-080		CAP, ELECT 22-50
	87-026-609-080		TR,KTA1266GR	C122	87-010-406-080		CAP, ELECT 22-50
	87-A30-186-010		FET,2SK3053	C152	87-010-260-080		CAP, ELECT 47-25V
	87-A30-075-080		C-TR,2SA1235F	C163	87-010-196-080		CHIP CAPACITOR,0.1-25
	87-A30-329-080		TR,CD1585BC	C171	87-012-368-080		C-CAP,S 0.1-50 F
	87-A30-318-080		TR,CSA952K	C172	87-012-368-080		C-CAP,S 0.1-50 F
	89-327-143-080		TR,2SC2714 (0.1W)	C173	87-012-368-080		C-CAP,S 0.1-50 F
	87-A30-072-080		C-TR,RT1P 144C	C174	87-012-368-080		C-CAP,S 0.1-50 F
	87-A30-234-080		TR,CSC4115BC	C175	87-A11-572-080		C-CAP,S 0.015-50 K B
	87-026-463-080		TR,2SA933S	C176	87-A11-572-080		C-CAP,S 0.015-50 K B
	87-A30-484-080		C-TR,KRA102S	C177	87-010-197-080		CAP, CHIP 0.01 DM
	87-A30-468-080		C-TR,KRC102S-RTK	C178	87-010-197-080		CAP, CHIP 0.01 DM
	87-A30-489-080		C-TR,KRA107S	C301	87-010-318-080		C-CAP,S 47P-50 CH
	87-A30-105-080		C-TR,RT1P441C	C302	87-010-318-080		C-CAP,S 47P-50 CH
DIODE				C303	87-012-157-080		C-CAP,S 330P-50 CH
	87-A40-673-090		DIODE,D10XB20	C304	87-012-157-080		C-CAP,S 330P-50 CH
	87-017-447-010		DIODE,GBU4DL-6419	C305	87-012-157-080		C-CAP,S 330P-50 CH
	87-A40-224-010		DIODE,GBU8DL	C306	87-012-157-080		C-CAP,S 330P-50 CH
	87-017-654-060		DIODE,GBU6JL6131	C307	87-010-196-080		CHIP CAPACITOR,0.1-25
	87-A40-736-080		DIODE,1N4148M(SEM)	C311	87-010-198-080		CAP, CHIP 0.022
	87-A40-553-080		DIODE,1N4003 LES	C312	87-010-198-080		CAP, CHIP 0.022
	87-A40-781-080		ZENER,UZ36BSA	C313	87-010-180-080		C-CER 1500P
	87-070-274-080		DIODE,1N4003 SEM	C314	87-010-180-080		C-CER 1500P
	87-A40-768-080		ZENER,UZ16BSA	C315	87-010-178-080		CHIP CAP 1000P
	87-017-154-080		ZENER,HZS6C3L	C316	87-010-178-080		CHIP CAP 1000P
	87-A40-488-080		DIODE,1SS244	C317	87-A10-201-080		C-CAP,S0.33-16 KB
	87-020-331-080		CHIP-DIODE,DAN202K	C318	87-A10-201-080		C-CAP,S0.33-16 KB
	87-A40-313-080		C-DIODE,MC 2840	C319	87-012-141-080		CHIP-CAPACITOR,0.22-16F
	87-A40-270-080		C-DIODE,MC2838	C320	87-012-141-080		CHIP-CAPACITOR,0.22-16F
	87-A40-751-080		ZENER,UZ6.2BSB	C324	87-010-260-080		CAP, ELECT 47-25V
	87-A40-747-080		ZENER,UZ5.1BSB	C325	87-010-370-080		CAP,E 330-6.3 SME
	87-A40-646-010		DIODE,FMB-G16L	C327	87-010-404-080		CAP, ELECT 4.7-50V
	87-A40-764-080		ZENER,UZ10BSC	C328	87-010-404-080		CAP, ELECT 4.7-50V
	87-A40-745-080		ZENER,UZ4.7BSA	C332	87-010-196-080		CHIP CAPACITOR,0.1-25
				C335	87-010-401-080		CAP, ELECT 1-50V

REF. NO.	PART NO.	KANRI NO.	DESCRIPTION	REF. NO.	PART NO.	KANRI NO.	DESCRIPTION
C336	87-010-401-080		CAP, ELECT 1-50V	C626	87-010-992-080		C-CAP,S 0.047-25 B
C337	87-010-196-080		CHIP CAPACITOR,0.1-25	C627	87-010-400-080		CAP, ELECT 0.47-50V
C339	87-010-196-080		CHIP CAPACITOR,0.1-25	C628	87-010-400-080		CAP, ELECT 0.47-50V
C340	87-010-196-080		CHIP CAPACITOR,0.1-25	C629	87-010-992-080		C-CAP,S 0.047-25 B
C351	87-012-140-080		CAP 470P	C630	87-010-383-080		CAP, ELECT 33-25V
C352	87-012-140-080		CAP 470P	C631	87-010-185-080		C-CAP,S 3900P-50 B
C354	87-010-175-080		CAP 560P	C632	87-010-185-080		C-CAP,S 3900P-50 B
C355	87-012-349-080		C-CAP,S 1000P-50 CH	C634	87-010-196-080		CHIP CAPACITOR,0.1-25
C356	87-010-260-080		CAP, ELECT 47-25V	C635	87-A10-307-080		CAP,M 0.1-50 J
C357	87-010-197-080		CAP, CHIP 0.01 DM	C636	87-A10-307-080		CAP,M 0.1-50 J
C358	87-010-183-080		C-CAP,S 2700P-50 B	C637	87-A10-307-080		CAP,M 0.1-50 J
C359	87-010-183-080		C-CAP,S 2700P-50 B	C638	87-A10-307-080		CAP,M 0.1-50 J
C360	87-010-183-080		C-CAP,S 2700P-50 B	C639	87-010-405-080		CAP, ELECT 10-50V
C370	87-010-196-080		CHIP CAPACITOR,0.1-25	C641	87-010-401-080		CAP, ELECT 1-50V
C371	87-010-175-080		CAP 560P	C642	87-010-401-080		CAP, ELECT 1-50V
C372	87-010-175-080		CAP 560P	C643	87-010-196-080		CHIP CAPACITOR,0.1-25
C373	87-010-179-080		CAP,CHIP S B1200P	C644	87-010-401-080		CAP, ELECT 1-50V
C374	87-010-179-080		CAP,CHIP S B1200P	C671	87-010-322-080		C-CAP,S 100P-50 CH
C375	87-010-545-080		CAP, ELECT 0.22-50V	C672	87-010-322-080		C-CAP,S 100P-50 CH
C376	87-010-545-080		CAP, ELECT 0.22-50V	C673	87-010-197-080		CAP, CHIP 0.01 DM
C378	87-010-196-080		CHIP CAPACITOR,0.1-25	C675	87-010-196-080		CHIP CAPACITOR,0.1-25
C381	87-010-197-080		CAP, CHIP 0.01 DM	C679	87-010-196-080		CHIP CAPACITOR,0.1-25
C382	87-010-318-080		C-CAP,S 47P-50 CH	C680	87-010-197-080		CAP, CHIP 0.01 DM
C383	87-010-197-080		CAP, CHIP 0.01 DM	C682	87-010-196-080		CHIP CAPACITOR,0.1-25
C384	87-010-402-080		CAP, ELECT 2.2-50V	C771	87-010-263-080		CAP, ELECT 100-10V
C385	87-010-184-080		CHIP CAPACITOR 3300P(K)	C772	87-010-197-080		CAP, CHIP 0.01 DM
C386	87-010-196-080		CHIP CAPACITOR,0.1-25	C773	87-010-184-080		CHIP CAPACITOR 3300P(K)
C388	87-012-156-080		C-CAP,S 220P-50 CH	C774	87-010-184-080		CHIP CAPACITOR 3300P(K)
C501	87-010-263-080		CAP, ELECT 100-10V	C782	87-010-197-080		CAP, CHIP 0.01 DM
C502	87-010-196-080		CHIP CAPACITOR,0.1-25	C783	87-010-197-080		CAP, CHIP 0.01 DM
C503	87-016-460-080		C-CAP,S 0.22-16 B	C784	87-010-197-080		CAP, CHIP 0.01 DM
C504	87-016-460-080		C-CAP,S 0.22-16 B	C785	87-010-197-080		CAP, CHIP 0.01 DM
C505	87-012-141-080		CHIP-CAPACITOR,0.22-16F	C786	87-010-197-080		CAP, CHIP 0.01 DM
C506	87-010-184-080		CHIP CAPACITOR 3300P(K)	C788	87-010-149-080		C-CAP,S 5P-50 CH
C507	87-A11-550-080		C-CAP,S 820P-50 K B	C789	87-012-365-080		C-CAP,S 0.027-25VBK
C508	87-016-669-080		C-CAP,S 0.1-25 K B	C790	87-012-365-080		C-CAP,S 0.027-25VBK
C509	87-016-669-080		C-CAP,S 0.1-25 K B	C791	87-010-196-080		CHIP CAPACITOR,0.1-25
C510	87-010-184-080		CHIP CAPACITOR 3300P(K)	C792	87-010-197-080		CAP, CHIP 0.01 DM
C511	87-A11-550-080		C-CAP,S 820P-50 K B	C793	87-010-404-080		CAP, ELECT 4.7-50V
C512	87-016-460-080		C-CAP,S 0.22-16 B	C795	87-010-197-080		CAP, CHIP 0.01 DM
C513	87-010-544-080		CAP, ELECT 0.1-50V	C796	87-010-197-080		CAP, CHIP 0.01 DM
C514	87-010-374-080		CAP, ELECT 47-10V	C797	87-010-405-080		CAP, ELECT 10-50V
C515	87-010-401-080		CAP, ELECT 1-50V	C798	87-010-197-080		CAP, CHIP 0.01 DM
C516	87-010-401-080		CAP, ELECT 1-50V	C799	87-010-407-080		CAP, ELECT 33-50V
C517	87-010-183-080		C-CAP,S 2700P-50 B	C800	87-012-369-080		C-CAP,S 0.047-50F
C518	87-010-183-080		C-CAP,S 2700P-50 B	C801	87-010-403-080		CAP, ELECT 3.3-50V
C531	87-010-560-080		CAP,E 10-50 GAS	C802	87-012-369-080		C-CAP,S 0.047-50F
C532	87-010-196-080		CHIP CAPACITOR,0.1-25	C803	87-010-198-080		CAP, CHIP 0.022
C533	87-010-196-080		CHIP CAPACITOR,0.1-25	C804	87-010-263-080		CAP, ELECT 100-10V
C534	87-012-156-080		C-CAP,S 220P-50 CH	C807	87-010-400-080		CAP, ELECT 0.47-50V
C535	87-010-178-080		CHIP CAP 1000P	C808	87-010-401-080		CAP, ELECT 1-50V
C536	87-010-196-080		CHIP CAPACITOR,0.1-25	C809	87-010-401-080		CAP, ELECT 1-50V
C538	87-010-318-080		C-CAP,S 47P-50 CH	C810	87-010-196-080		CHIP CAPACITOR,0.1-25
C541	87-010-178-080		CHIP CAP 1000P	C811	87-010-403-080		CAP, ELECT 3.3-50V
C603	87-010-318-080		C-CAP,S 47P-50 CH	C812	87-010-403-080		CAP, ELECT 3.3-50V
C604	87-010-318-080		C-CAP,S 47P-50 CH	C814	87-010-197-080		CAP, CHIP 0.01 DM
C605	87-010-318-080		C-CAP,S 47P-50 CH	C815	87-010-400-080		CAP, ELECT 0.47-50V
C606	87-010-318-080		C-CAP,S 47P-50 CH	C816	87-010-400-080		CAP, ELECT 0.47-50V
C611	87-010-956-080		CHIP-CAP,S 0.068-25B	C819	87-010-179-080		CAP,CHIP S B1200P
C612	87-010-369-080		C-CAP,S 0.033-25 K B	C820	87-010-179-080		CAP,CHIP S B1200P
C613	87-010-197-080		CAP, CHIP 0.01 DM	C821	87-010-405-080		CAP, ELECT 10-50V
C614	87-016-669-080		C-CAP,S 0.1-25 K B	C824	87-010-404-080		CAP, ELECT 4.7-50V
C616	87-010-180-080		C-CER 1500P	C825	87-010-596-080		CAP, S 0.047-16
C617	87-010-198-080		CAP, CHIP 0.022	C959	87-010-196-080		CHIP CAPACITOR,0.1-25
C618	87-010-401-080		CAP, ELECT 1-50V	C960	87-010-196-080		CHIP CAPACITOR,0.1-25
C619	87-010-263-080		CAP, ELECT 100-10V	C961	87-010-152-080		C-CAP,S 8P-50 CH
C620	87-016-669-080		C-CAP,S 0.1-25 K B	C963	87-015-785-080		CHIP CAPACITOR, 0.1FZ-25Z
C621	87-010-197-080		CAP, CHIP 0.01 DM	C971	87-010-381-080		CAP, ELECT 330-16V
C623	87-010-401-080		CAP, ELECT 1-50V	C972	87-010-404-080		CAP, ELECT 4.7-50V
C624	87-010-401-080		CAP, ELECT 1-50V	C973	87-010-197-080		CAP, CHIP 0.01 DM

REF. NO.	PART NO.	KANRI NO.	DESCRIPTION	REF. NO.	PART NO.	KANRI NO.	DESCRIPTION
C974	87-010-197-080		CAP, CHIP 0.01 DM	C107	87-012-157-080		C-CAP,S 330P-50 CH
C979	87-010-322-080		C-CAP,S 100P-50 CH	C108	87-015-681-040		E/CAP 10-16
C981	87-010-260-080		CAP, ELECT 47-25V	C109	87-010-401-040		CAP,E 1-50 SME
C982	87-010-196-080		CHIP CAPACITOR,0.1-25	C110	87-010-196-080		CHIP CAPACITOR,0.1-25
C983	87-010-197-080		CAP, CHIP 0.01 DM	C112	87-016-460-080		C-CAP,S 0.22-16 B
C984	87-010-197-080		CAP, CHIP 0.01 DM	C113	87-A10-189-040		CAP,E 220-10
C987	87-010-197-080		CAP, CHIP 0.01 DM	C114	87-010-196-080		CHIP CAPACITOR,0.1-25
C991	87-010-312-080		C-CAP,S 15P-50 CH	C115	87-010-198-080		CAP, CHIP 0.022
C992	87-010-312-080		C-CAP,S 15P-50 CH	C116	87-010-493-040		CAP,E 0.47-50 GAS
C993	87-010-178-080		CHIP CAP 1000P	C117	87-010-498-040		CAP,E 10-16 GAS
C995	87-010-178-080		CHIP CAP 1000P	C118	87-010-194-080		CAP, CHIP 0.047
C997	87-010-196-080		CHIP CAPACITOR,0.1-25	C119	87-A10-797-040		CAP,E 47-35 M 5L SRM
C998	87-010-260-080		CAP, ELECT 47-25V	C120	87-015-699-040		CAP,E 10-50 7L
C999	87-A11-155-080		CAP,TC U 0.01-16 Z F	C121	87-015-699-040		CAP,E 10-50 7L
CN1	87-A60-996-010		CONN,13P V BLK TAC-L13X-A3	C122	87-010-197-080		CAP, CHIP 0.01 DM
CN91	87-A60-619-010		CONN,2P V 2MM JMT	C123	87-010-196-080		CHIP CAPACITOR,0.1-25
CN92	87-A60-619-010		CONN,2P V 2MM JMT	C125	87-010-196-080		CHIP CAPACITOR,0.1-25
CN101	87-A60-996-010		CONN,13P V BLK TAC-L13X-A3	C128	87-010-178-080		CHIP CAP 1000P
CN301	87-A60-620-010		CONN,3P V 2MM JMT	C129	87-010-194-080		CAP, CHIP 0.047
CN351	87-A60-625-010		CONN,8P V 2MM JMT	C131	87-A10-189-040		CAP,E 220-10
CN601	87-099-719-010		CONN,30P TYK-B(X)	C132	87-A10-189-040		CAP,E 220-10
CN602	87-A60-131-010		CONN,6P V FE	C151	87-010-194-080		CAP, CHIP 0.047
CN605	87-099-568-010		CONN,11P TUC-P11P-B1	C192	87-015-785-080		CHIP CAPACITOR, 0.1FZ-25Z
CNA1	8A-NF8-653-010		CONN ASSY,9P TID-A(480)	C196	87-010-194-080		CAP, CHIP 0.047
CNA2	8A-NF3-640-110		CONN ASSY,3P (VM) ANF-3	C197	87-010-194-080		CAP, CHIP 0.047
FB501	87-008-372-080		FILTER, EMI BL OIRNI	C213	87-A10-189-040		CAP,E 220-10
FFC302	88-906-481-110		FF-CABLE,6P 1.25 480MM	C301	87-010-318-080		C-CAP,S 47P-50 CH
FFE831	A8-8ZA-190-030		8ZA-1 FEUMM	C303	87-016-460-080		C-CAP,S 0.22-16 B
J102	87-A60-238-010		TERMINAL,SP 4P (MSC)	C304	87-016-460-080		C-CAP,S 0.22-16 B
J103	87-A60-483-010		JACK,DIA6.3 BLK ST W/S KM	C305	87-010-196-080		CHIP CAPACITOR,0.1-25
J601	87-A60-885-010		JACK,PIN 6P R/W MSC	C306	87-010-196-080		CHIP CAPACITOR,0.1-25
J831	87-A60-202-010		TERMINAL,ANT 4P MSP-154V-02	C310	87-010-067-040		CAP,E 0.1-50 5L
L101	87-A50-610-010		COIL,1UH K(MDEC)	C701	87-010-981-040		CAP,E 22-35 5L SRE
L102	87-A50-610-010		COIL,1UH K(MDEC)	C801	87-012-156-080		C-CAP,S 220P-50 CH
L301	87-A50-625-010		COIL,TRAP 85K(SANWA)	C802	87-010-176-080		C-CAP,S 680P-50 SL
L302	87-A50-625-010		COIL,TRAP 85K(SANWA)	C803	87-010-187-080		CAP CHIP S5600P
L351	87-007-342-010		COIL,OSC 85K BIAS	C804	87-010-213-080		C-CAP,S 0.015-50 B
L801	87-A50-608-010		COIL,FM DET-N(TOK)	C805	87-010-197-080		CAP, CHIP 0.01 DM
L802	87-A91-551-010		FLTR,PCFJZH-450 L(TOK)	C806	87-010-071-040		CAP,E 1-50 M 5L SRE
L811	87-005-847-080		COIL,2.2UH(CECS)	C807	87-010-197-080		CAP, CHIP 0.01 DM
L821	87-A50-209-010		COIL,1POLE MPX(MIT)	C809	87-012-155-080		C-CAP 180P-50CH
L822	87-A50-209-010		COIL,1POLE MPX(MIT)	C810	87-010-264-040		CAP,E 100-10 5L
L832	87-005-847-080		COIL,2.2UH(CECS)	C811	87-010-244-040		CAP,E 22-16 5L
L951	8A-NF8-667-010		COIL,AM PACK 4(TOK)	C812	87-016-044-040		CAP,E 100-16 GAS
R117	87-012-368-080		C-CAP,S 0.1-50 ZF	C821	87-010-196-080		CHIP CAPACITOR,0.1-25
R118	87-012-368-080		C-CAP,S 0.1-50 ZF	C833	87-010-322-080		C-CAP,S 100P-50 CH
R161	87-A00-441-050		RES,270-1/2W J RP	C901	87-012-157-080		C-CAP,S 330P-50 CH
R162	87-A00-441-050		RES,270-1/2W J RP	C902	87-010-176-080		C-CAP,S 680P-50 SL
R163	87-A00-441-050		RES,270-1/2W J RP	C903	87-010-176-080		C-CAP,S 680P-50 SL
R164	87-A00-441-050		RES,270-1/2W J RP	C904	87-010-176-080		C-CAP,S 680P-50 SL
R790	87-010-197-080		CAP, CHIP 0.01 DM	C905	87-010-176-080		C-CAP,S 680P-50 SL
R991	87-010-322-080		C-CAP,S 100P-50 CH	C906	87-010-176-080		C-CAP,S 680P-50 SL
R993	87-010-322-080		C-CAP,S 100P-50 CH	C907	87-010-176-080		C-CAP,S 680P-50 SL
R995	87-010-322-080		C-CAP,S 100P-50 CH	C908	87-010-176-080		C-CAP,S 680P-50 SL
SFR301	87-024-355-080		SFR,33K DIA6 H	C909	87-010-176-080		C-CAP,S 680P-50 SL
SFR302	87-024-355-080		SFR,33K DIA6 H	C910	87-010-176-080		C-CAP,S 680P-50 SL
SFR303	87-024-355-080		SFR,33K DIA6 H	C911	87-010-176-080		C-CAP,S 680P-50 SL
SFR304	87-024-355-080		SFR,33K DIA6 H	C912	87-010-176-080		C-CAP,S 680P-50 SL
SFR305	87-024-356-080		SFR,47K DIA6 H	C913	87-010-176-080		C-CAP,S 680P-50 SL
SFR306	87-024-356-080		SFR,47K DIA6 H	C914	87-012-145-080		CAP, CHIP S 270P CH
SFR351	87-024-356-080		SFR,47K DIA6 H	CN101	87-099-720-010		CONN,30P TYK-B(P)
SFR352	87-024-356-080		SFR,47K DIA6 H	CN102	87-A60-054-010		CONN,14P V 9604S-14C
X991	87-A70-061-010		VIB,XTAL 4.500MHZ CSA-309	CN103	87-099-750-010		CONN,15P V 9604SC
				CN601	87-A60-062-010		CONN,05P V 9604S-05C
				CN701	87-099-750-010		CONN,15P V 9604SC
DISPLAY C.B				FFC102	88-914-481-110		FF-CABLE,14P 1.25 480MM
C103	87-010-196-080		CHIP CAPACITOR,0.1-25	FFC104	88-915-161-110		FF-CABLE,15P 1.25
C104	87-010-313-080		CAP, CHIP 18P	FFC601	88-905-081-110		FF-CABLE,5P 1.25
C105	87-010-322-080		C-CAP,S 100P-50 CH	FFC701	88-915-161-110		FF-CABLE,15P 1.25
C106	87-012-145-080		CAP, CHIP S 270P CH	FL101	8A-NF3-613-010		FL,BJ752GK-ANF3

REF. NO.	PART NO.	KANRI NO.	DESCRIPTION	REF. NO.	PART NO.	KANRI NO.	DESCRIPTION
JR102	83-XM1-617-080		C-COIL,BK2125HM601	S207	87-A90-095-080		SW, TACT EVQ11G04M
JW315	87-A90-896-080		F-BEAD, 035600STY7	S208	87-A90-095-080		SW, TACT EVQ11G04M
JW316	87-A90-896-080		F-BEAD, 035600STY7	S211	87-A90-095-080		SW, TACT EVQ11G04M
L101	87-A50-333-010		COIL,OSC 9.43MHZ	S212	87-A90-095-080		SW, TACT EVQ11G04M
L801	87-A50-093-010		COIL,CLOCK 5.76MHZ	S213	87-A90-095-080		SW, TACT EVQ11G04M
L802	87-003-098-080		COIL,2.2UH	S214	87-A90-095-080		SW, TACT EVQ11G04M
				S215	87-A90-095-080		SW, TACT EVQ11G04M
				S216	87-A90-095-080		SW, TACT EVQ11G04M
				S217	87-A90-095-080		SW, TACT EVQ11G04M
				S221	87-A90-095-080		SW, TACT EVQ11G04M
CD KEY C.B							
CN301	87-A60-079-010		CONN,08P H 9604S-08F	S222	87-A90-095-080		SW, TACT EVQ11G04M
FFC302	88-908-381-110		FF-CABLE,8P 1.25	S223	87-A90-095-080		SW, TACT EVQ11G04M
LED311	87-A40-380-180		LED,SEL6510C-TP5 GRN	S224	87-A90-095-080		SW, TACT EVQ11G04M
LED312	87-A40-380-180		LED,SEL6510C-TP5 GRN	S225	87-A90-095-080		SW, TACT EVQ11G04M
LED313	87-A40-380-180		LED,SEL6510C-TP5 GRN	S226	87-A90-095-080		SW, TACT EVQ11G04M
LED314	87-A40-380-180		LED,SEL6510C-TP5 GRN	S227	87-A90-095-080		SW, TACT EVQ11G04M
LED315	87-A40-380-180		LED,SEL6510C-TP5 GRN	S228	87-A90-095-080		SW, TACT EVQ11G04M
S311	87-A90-095-080		SW, TACT EVQ11G04M	S229	87-A90-095-080		SW, TACT EVQ11G04M
S312	87-A90-095-080		SW, TACT EVQ11G04M	S230	87-A90-095-080		SW, TACT EVQ11G04M
S313	87-A90-095-080		SW, TACT EVQ11G04M	S231	87-A90-095-080		SW, TACT EVQ11G04M
S314	87-A90-095-080		SW, TACT EVQ11G04M	S232	87-A90-095-080		SW, TACT EVQ11G04M
S315	87-A90-095-080		SW, TACT EVQ11G04M	S241	87-A90-095-080		SW, TACT EVQ11G04M
S316	87-A90-095-080		SW, TACT EVQ11G04M	S242	87-A90-095-080		SW, TACT EVQ11G04M
S317	87-A90-095-080		SW, TACT EVQ11G04M	S243	87-A90-095-080		SW, TACT EVQ11G04M
				S244	87-A90-095-080		SW, TACT EVQ11G04M
CONTROL C.B							
C401	87-010-196-080		CHIP CAPACITOR,0.1-25	S245	87-A90-095-080		SW, TACT EVQ11G04M
C407	87-010-322-080		C-CAP,S 100P-50 CH	S246	87-A90-095-080		SW, TACT EVQ11G04M
C410	87-010-196-080		CHIP CAPACITOR,0.1-25	S247	87-A90-095-080		SW, TACT EVQ11G04M
C417	87-010-322-080		C-CAP,S 100P-50 CH	S248	87-A90-095-080		SW, TACT EVQ11G04M
C423	87-010-196-080		CHIP CAPACITOR,0.1-25	S249	87-A90-095-080		SW, TACT EVQ11G04M
C424	87-010-196-080		CHIP CAPACITOR,0.1-25	S250	87-A90-095-080		SW, TACT EVQ11G04M
C501	87-010-178-080		CHIP CAP 1000P	S251	87-A90-095-080		SW, TACT EVQ11G04M
C502	87-012-156-080		C-CAP,S 220P-50 CH	SW501	87-A91-739-010		SW,RTRY EC12E12404-25MM RT
C531	87-010-196-080		CHIP CAPACITOR,0.1-25				
C532	87-010-196-080		CHIP CAPACITOR,0.1-25	VOLUME C.B			
CN104	87-099-750-010		CONN,15P V 9604SC	C161	87-010-178-080		CHIP CAP 1000P
CN302	87-A60-059-010		CONN,08P V 9604S-08C	C162	87-012-156-080		C-CAP,S 220P-50 CH
LED101	87-A40-317-080		LED,SLR-342VCT31 RED	S511	87-A90-095-080		SW, TACT EVQ11G04M
LED421	87-A40-831-010		LED,SELU1E10CXM-LF70 BLUE-DEF	S512	87-A90-095-080		SW, TACT EVQ11G04M
LED422	87-A40-831-010		LED,SELU1E10CXM-LF70 BLUE-DEF	S513	87-A90-095-080		SW, TACT EVQ11G04M
LED440	87-A40-380-180		LED,SEL6510C-TP5 GRN	S514	87-A90-095-080		SW, TACT EVQ11G04M
LED441	87-A40-380-180		LED,SEL6510C-TP5 GRN	S515	87-A90-095-080		SW, TACT EVQ11G04M
LED442	87-A40-380-180		LED,SEL6510C-TP5 GRN	SW101	87-A91-740-010		SW,RTRY EC12E24308-30MM
LED443	87-A40-380-180		LED,SEL6510C-TP5 GRN				
LED444	87-A40-380-180		LED,SEL6510C-TP5 GRN	MIC C.B			
LED445	87-A40-380-180		LED,SEL6510C-TP5 GRN	C601	87-010-196-080		CHIP CAPACITOR,0.1-25
LED446	87-A40-380-180		LED,SEL6510C-TP5 GRN	C602	87-010-186-080		CAP,CHIP 4700P
LED447	87-A40-380-180		LED,SEL6510C-TP5 GRN	C603	87-010-112-040		CAP,E 100-16
LED448	87-A40-380-180		LED,SEL6510C-TP5 GRN	C604	87-010-405-040		CAP,E 10-50
LED449	87-A40-380-180		LED,SEL6510C-TP5 GRN	C605	87-010-546-040		CAP,E 0.33-50
LED451	87-A40-809-040		LED,LTL-307KK PGRN	C606	87-010-320-080		CHIP CAP 68P
LED452	87-A40-809-040		LED,LTL-307KK PGRN	C608	87-012-157-080		C-CAP,S 330P-50 CH
LED453	87-A40-809-040		LED,LTL-307KK PGRN	C621	87-010-178-080		CHIP CAP 1000P
LED454	87-A40-809-040		LED,LTL-307KK PGRN	CN602	87-A60-082-010		CONN,05P H 9604S-05F
LED455	87-A40-809-040		LED,LTL-307KK PGRN	J601	87-A61-242-010		JACK,6.3 BLK MONO W/SW V KM
LED456	87-A40-809-040		LED,LTL-307KK PGRN	J602	87-A61-242-010		JACK,6.3 BLK MONO W/SW V KM
LED461	87-A40-317-080		LED,SLR-342VCT31 RED	L601	87-003-098-080		COIL,2.2UH
LED462	87-A40-317-080		LED,SLR-342VCT31 RED				
LED463	87-A40-317-080		LED,SLR-342VCT31 RED	AMP C.B			
LED464	87-A40-317-080		LED,SLR-342VCT31 RED	C101	87-010-188-080		CAP,CHIP 6800P
LED465	87-A40-317-080		LED,SLR-342VCT31 RED	C102	87-010-188-080		CAP,CHIP 6800P
LED521	87-A40-678-010		LED,SELU1E10CXM BLUE-DEF	C103	87-010-405-080		CAP, ELECT 10-50V
LED522	87-A40-678-010		LED,SELU1E10CXM BLUE-DEF	C104	87-010-405-080		CAP, ELECT 10-50V
S201	87-A90-095-080		SW, TACT EVQ11G04M	C107	87-010-404-080		CAP, ELECT 4.7-50V
S202	87-A90-095-080		SW, TACT EVQ11G04M	C108	87-010-404-080		CAP, ELECT 4.7-50V
S203	87-A90-095-080		SW, TACT EVQ11G04M	C111	87-010-322-080		C-CAP,S 100P-50 CH
S204	87-A90-095-080		SW, TACT EVQ11G04M	C112	87-010-322-080		C-CAP,S 100P-50 CH
S205	87-A90-095-080		SW, TACT EVQ11G04M				
S206	87-A90-095-080		SW, TACT EVQ11G04M				

REF. NO.	PART NO.	KANRI NO.	DESCRIPTION	REF. NO.	PART NO.	KANRI NO.	DESCRIPTION
C113	87-A10-812-080		C-CAP,S 220P-200 J CH	C19	87-A11-148-080		CAP,TC U 0.1-50 Z F
C114	87-A10-812-080		C-CAP,S 220P-200 J CH	C20	87-A11-148-080		CAP,TC U 0.1-50 Z F
C119	87-010-197-080		CAP, CHIP 0.01 DM	C21	87-A11-148-080		CAP,TC U 0.1-50 Z F
C120	87-010-197-080		CAP, CHIP 0.01 DM	C22	87-A10-231-090		CAP,E 3300-80
C121	87-010-260-080		CAP, ELECT 47-25V	C23	87-A10-231-090		CAP,E 3300-80
C122	87-010-260-080		CAP, ELECT 47-25V	C24	87-A11-148-080		CAP,TC U 0.1-50 Z F
C173	87-010-186-080		CAP,CHIP 4700P	C25	87-A11-148-080		CAP,TC U 0.1-50 Z F
C174	87-010-186-080		CAP,CHIP 4700P	C27	87-A11-148-080		CAP,TC U 0.1-50 Z F
C205	87-010-187-080		CAP,CHIP S5600P	C28	87-A11-148-080		CAP,TC U 0.1-50 Z F
C206	87-010-187-080		CAP,CHIP S5600P	C29	87-A11-148-080		CAP,TC U 0.1-50 Z F
C207	87-010-403-080		CAP, ELECT 3.3-50V	C30	87-A11-148-080		CAP,TC U 0.1-50 Z F
C208	87-010-403-080		CAP, ELECT 3.3-50V	C31	87-A11-148-080		CAP,TC U 0.1-50 Z F
C209	87-010-184-080		CHIP CAPACITOR 3300P(K)	C32	87-A11-148-080		CAP,TC U 0.1-50 Z F
C210	87-010-184-080		CHIP CAPACITOR 3300P(K)	C33	87-A11-148-080		CAP,TC U 0.1-50 Z F
C211	87-010-401-080		CAP, ELECT 1-50V	C34	87-A11-148-080		CAP,TC U 0.1-50 Z F
C212	87-010-401-080		CAP, ELECT 1-50V	C35	87-A11-148-080		CAP,TC U 0.1-50 Z F
C215	87-012-156-080		C-CAP,S 220P-50 CH	C36	87-A11-148-080		CAP,TC U 0.1-50 Z F
C216	87-012-156-080		C-CAP,S 220P-50 CH	C37	87-A11-148-080		CAP,TC U 0.1-50 Z F
C217	87-010-260-080		CAP, ELECT 47-25V	C38	87-A11-148-080		CAP,TC U 0.1-50 Z F
C218	87-010-260-080		CAP, ELECT 47-25V	CN1	87-A61-110-010		CONN,9P V TID-A
C221	87-016-100-080		CAP, ELECT 10-50 M BP SME	CN2	87-A61-109-010		CONN,7P V TID-A
C222	87-016-100-080		CAP, ELECT 10-50 M BP SME	△ F101	87-035-459-010		FUSE,5A 250V
C223	87-010-197-080		CAP, CHIP 0.01 DM	△ F102	87-035-459-010		FUSE,5A 250V
C224	87-010-197-080		CAP, CHIP 0.01 DM	△ FB101	87-A90-562-010		F-BEAD,9.5-17.5.5-28.5 BRH
C249	87-012-368-080		C-CAP,S 0.1-50 F	△ FC1	87-033-213-080		FUSE CLAMP,PFC5000
C251	87-010-993-080		C-CAP,S 0.056-25 B	△ FC2	87-033-213-080		FUSE CLAMP,PFC5000
C252	87-010-196-080		CHIP CAPACITOR,0.1-25	△ FC3	87-033-213-080		FUSE CLAMP,PFC5000
C253	87-010-196-080		CHIP CAPACITOR,0.1-25	△ FC4	87-033-213-080		FUSE CLAMP,PFC5000
C254	87-010-993-080		C-CAP,S 0.056-25 B	△ PR1	87-026-682-080		PROTECTOR,10A 60V491
C255	87-010-190-080		S CHIP F 0.01	△ PR2	87-026-682-080		PROTECTOR,10A 491 SERIES 60V
C256	87-010-190-080		S CHIP F 0.01	△ PR3	87-A90-195-080		PROTECTOR,7A 125V 49
C265	87-010-260-080		CAP,E 47-25V	△ PR4	87-A90-195-080		PROTECTOR,7A 125V 49
C402	87-010-196-080		CHIP CAPACITOR,0.1-25	△ PR5	87-A90-195-080		PROTECTOR,7A 125V 49
C413	87-A10-119-080		CAP,E 10-100 REA	△ PR6	87-A90-195-080		PROTECTOR,7A 125V 49
C414	87-A10-119-080		CAP,E 10-100 REA	△ PR7	87-026-682-080		PROTECTOR,10A 491 SERIES 60V
CNA101	8A-NF8-652-010		CONN ASSY,7P TID-A(480)	△ PR8	87-026-682-080		PROTECTOR,10A 491 SERIES 60V
CON101	87-A61-011-010		CONN,13P H BLK TAC-L13P-A3	△ PT2	8A-NF8-673-010		PT,SUB ANF-8 (H)KAMI
CON102	87-A61-011-010		CONN,13P H BLK TAC-L13P-A3	△ PT101	8A-NF3-602-010		PT,LH EI105-60 ANF-3
J201	87-A61-148-010		JACK,PIN 4P R/W BLUE	△ RY2	87-A91-300-010		RELAY,AC 12V-AL2PF12
JW138	87-A90-896-080		F-BEAD, 035600STY7	△ S1	87-A90-165-010		SW,SL 1-2-3 SWS2301
JW944	87-A90-896-080		F-BEAD, 035600STY7	△ T1	87-A60-317-010		TERMINAL, 1P MSC
L251	87-A50-610-010		COIL,1UH K(MDEC)	△ T2	87-A60-317-010		TERMINAL, 1P MSC
L252	87-A50-610-010		COIL,1UH K(MDEC)				
R161	87-A00-418-010		RES,M/F 0.15-3W J				
R162	87-A00-418-010		RES,M/F 0.15-3W J		VM C.B		
R165	87-A00-418-010		RES,M/F 0.15-3W J		CNA3	87-049-919-010	CONN,3P EH V WHT
R166	87-A00-418-010		RES,M/F 0.15-3W J				
R231	87-A00-669-080		RES,M/F 0.22-2W J RA				
R232	87-A00-669-080		RES,M/F 0.22-2W J RA		GEQ C.B		
R243	87-A00-669-080		RES,M/F 0.22-2W J RA				
R244	87-A00-669-080		RES,M/F 0.22-2W J RA		C201	87-010-402-080	CAP, ELECT 2.2-50V
TH101	87-A91-042-080		C-THMS,100K 55001		C202	87-010-402-080	CAP, ELECT 2.2-50V
TH102	87-A91-042-080		C-THMS,100K 55001		C205	87-010-404-080	CAP, ELECT 4.7-50V
WH101	87-A90-460-010		HLDR,WIRE 2.5-7P		C207	87-016-669-080	C-CAP,S 0.1-25 K B
					C208	87-016-669-080	C-CAP,S 0.1-25 K B
PT C.B					C209	87-016-460-080	C-CAP,S 0.22-16 B
C1	87-010-387-080		CAP,E 470-25 SME		C210	87-016-460-080	C-CAP,S 0.22-16 B
C4	87-A11-148-080		CAP,TC U 0.1-50 Z F		C211	87-012-365-080	C-CAP,S 0.027-25VBK
C5	87-A11-148-080		CAP,TC U 0.1-50 Z F		C212	87-012-365-080	C-CAP,S 0.027-25VBK
C6	87-010-917-000		CAP,E 3300-50 M SMG		C213	87-010-956-080	CHIP-CAP,S 0.068-25B
C7	87-010-917-000		CAP,E 3300-50 M SMG		C214	87-010-956-080	CHIP-CAP,S 0.068-25B
C8	87-A11-148-080		CAP,TC U 0.1-50 Z F		C215	87-010-197-080	CAP, CHIP 0.01 DM
C9	87-A11-148-080		CAP,TC U 0.1-50 Z F		C216	87-010-197-080	CAP, CHIP 0.01 DM
C10	87-A11-148-080		CAP,TC U 0.1-50 Z F		C217	87-010-198-080	CAP, CHIP 0.022
C11	87-A11-148-080		CAP,TC U 0.1-50 Z F		C218	87-010-198-080	CAP, CHIP 0.022
C12	87-010-917-000		CAP,E 3300-50 M SMG		C219	87-010-183-080	C-CAP,S 2700P-50 B
C13	87-010-917-000		CAP,E 3300-50 M SMG		C220	87-010-183-080	C-CAP,S 2700P-50 B
C16	87-010-403-040		CAP,E 3.3-50 SME		C221	87-010-188-080	CAP,CHIP 6800P
C18	87-A11-148-080		CAP,TC U 0.1-50 Z F		C222	87-010-188-080	CAP,CHIP 6800P
					C223	87-010-178-080	CHIP CAP 1000P

REF. NO.	PART NO.	KANRI NO.	DESCRIPTION	REF. NO.	PART NO.	KANRI NO.	DESCRIPTION
C224	87-010-178-080		CHIP CAP 1000P	SW8	87-A90-248-010		SW,MICRO ESE11SH2CXQ
C225	87-010-182-080		C-CAP,S 2200P-50 B	SW9	87-A90-248-010		SW,MICRO ESE11SH2CXQ
C226	87-010-182-080		C-CAP,S 2200P-50 B				
C227	87-010-112-080		CAP, ELECT 100-16V				
C228	87-010-196-080		CHIP CAPACITOR,0.1-25				
				HEAD-1			C.B
C229	87-010-322-080		C-CAP,S 100P-50 CH		85-ZM3-602-010		PWB,FLEX A
C230	87-010-322-080		C-CAP,S 100P-50 CH	CON301	87-NF6-615-010		CONN ASSY,3P-RPB
C231	87-010-322-080		C-CAP,S 100P-50 CH				
CN201	87-A60-546-010		CONN,11P H GRY TUC-P11X-C1				
				HEAD-2			C.B
					85-ZM3-602-010		PWB,FLEX A
				CON351	87-NF6-616-010		CONN ASSY,8P-RPB
DECK C.B							
CN502	87-099-756-010		CONN,15P 9604S F				
SFR1	87-024-581-010		SFR,3.3K DIA 6H				
SOL1	82-ZM1-618-410		SOL ASSY,27				
SOL2	82-ZM1-618-410		SOL ASSY,27				
SW1	87-A90-248-010		SW,MICRO ESE11SH2CXQ				
SW2	87-A90-248-010		SW,MICRO ESE11SH2CXQ				
SW3	87-A90-248-010		SW,MICRO ESE11SH2CXQ				
SW4	87-036-110-010		SW,MICRO SPPB62				
SW5	87-036-110-010		SW,MICRO SPPB62				
SW6	87-036-110-010		SW,MICRO SPPB62				

○チップ抵抗部品コード/CHIP RESISTOR PART CODE

チップ抵抗部品コードの成り立ち

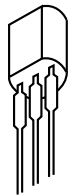
Chip Resistor Part Coding



チップ抵抗
Chip resistor

容量 Wattage	種類 Type	許容誤差 Tolerance	記号 Symbol	寸法/Dimensions (mm)			抵抗コード : A Resistor Code : A	
				外形/Form	L	W		t
1/16W	1005	± 5%	CJ		1.0	0.5	0.35	104
1/16W	1608	± 5%	CJ		1.6	0.8	0.45	108
1/10W	2125	± 5%	CJ		2	1.25	0.45	118
1/8W	3216	± 5%	CJ		3.2	1.6	0.55	128

TRANSISTOR ILLUSTRATION



E C B

KTA1266GR
KTC3199GR
CSA952K



E C B

CC5551



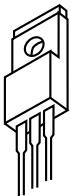
E C B

DTC114ES
2SA933S



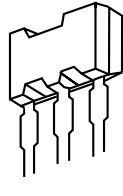
E C B

2SB1436



B C E

2SB1370
2SB1588
2SD2439



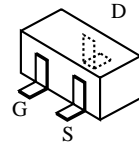
E C B

2SB1237Q

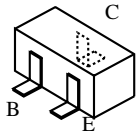


G D S

2SK3053



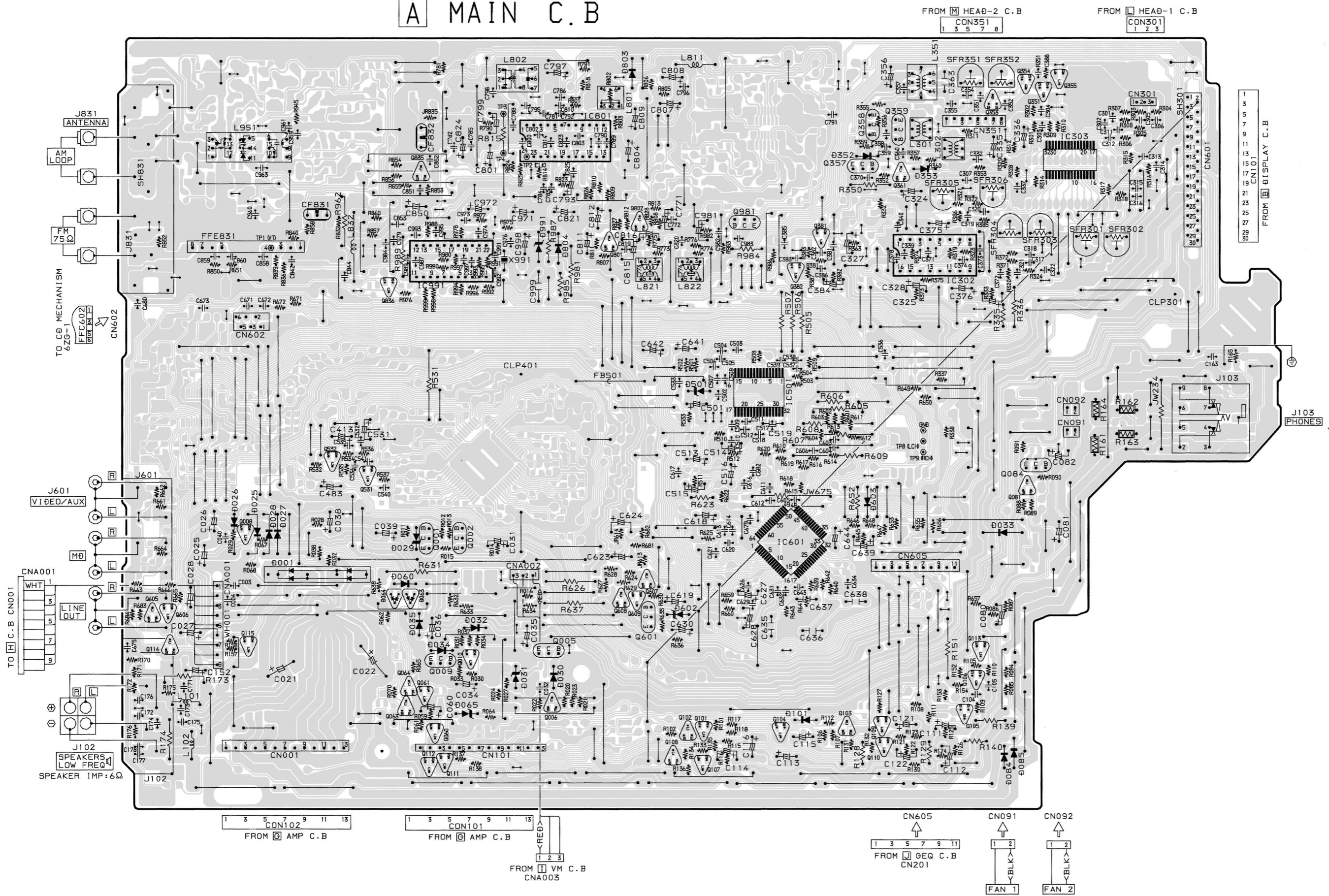
2SK2158



2SA1235F	KAC102S
2SC2714	KRA104S
2SC3052F	KRA102S
CMBT5551	KRA107S
CMBT5401	RT1N141C
CSD1306E	RT1P144C
DTA143EKA	RT1P441C

32 31 30 29 28 27 26 25 24 23 22 21 20 19 18 17 16 15 14 13 12 11 10 9 8 7 6 5 4 3 2 1

A MAIN C.B



FROM HEAD-2 C.B
CON351
1 3 5 7 8

FROM HEAD-1 C.B
CON301
1 2 3

FROM DISPLAY C.B
CN101
1 3 5 7 9 11 13 15 17 19 21 23 25 27 29 31

FROM AMP C.B
CN102
1 3 5 7 9 11 13

FROM AMP C.B
CN101
1 3 5 7 9 11 13

FROM VM C.B
CNA003
1 2 3

FROM GEQ C.B
CN201
1 3 5 7 9 11

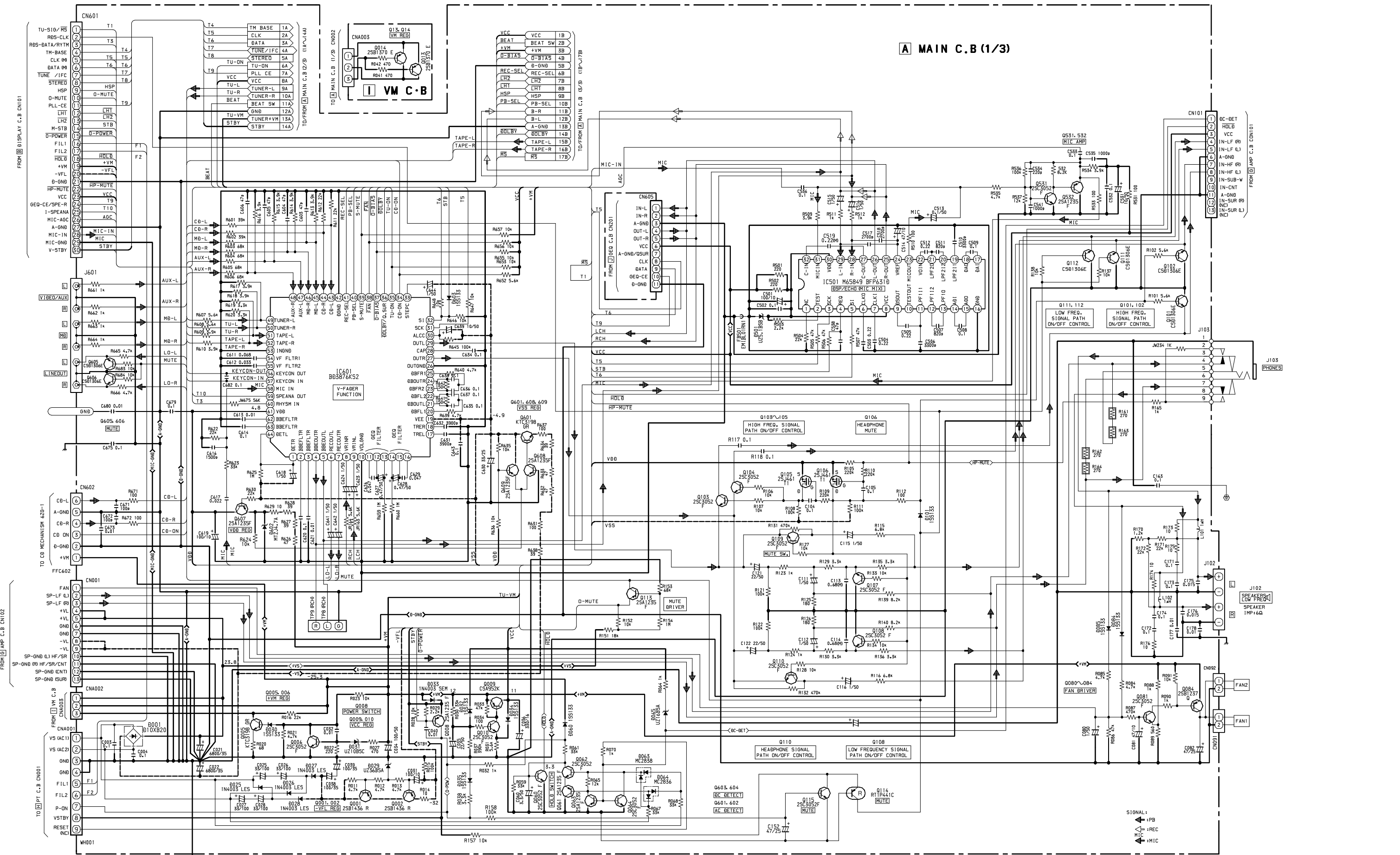
FAN 1
CN605
1 2

FAN 2
CN091
1 2

FAN 2
CN092
1 2

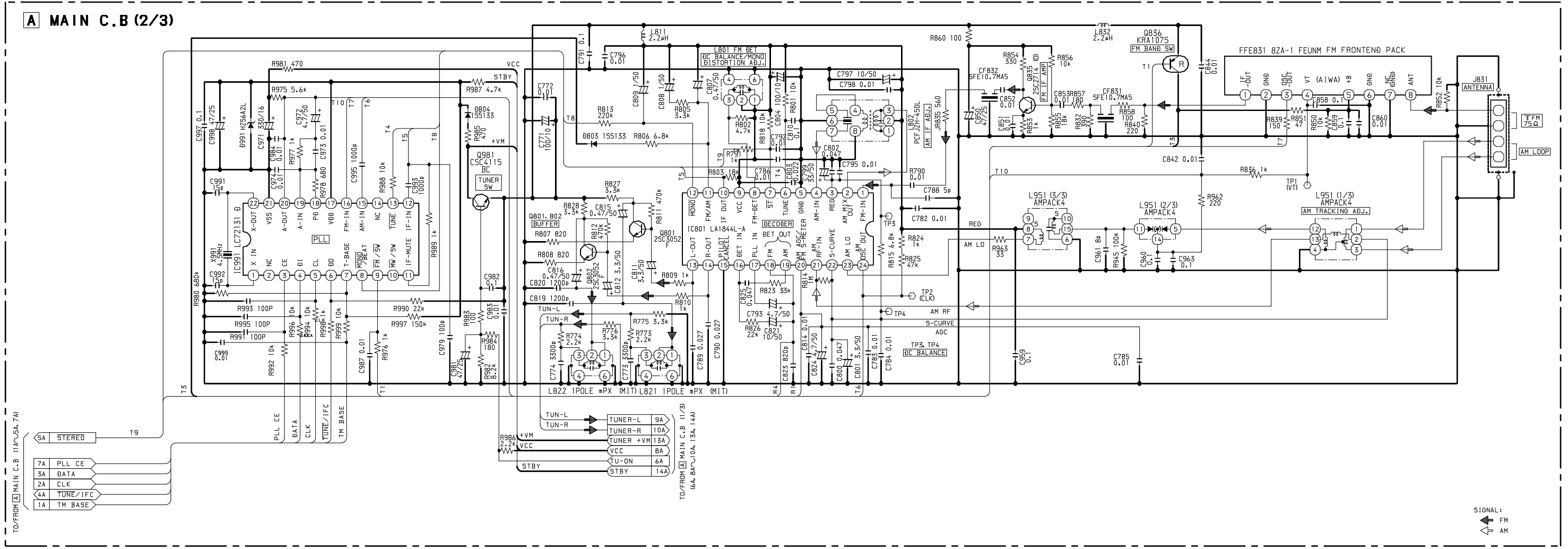
A
B
C
D
E
F
G
H
I
J
K
L
M
N
O
P
Q
R
S
T
U

SCHEMATIC DIAGRAM - 1 (MAIN 1/3 / VM)

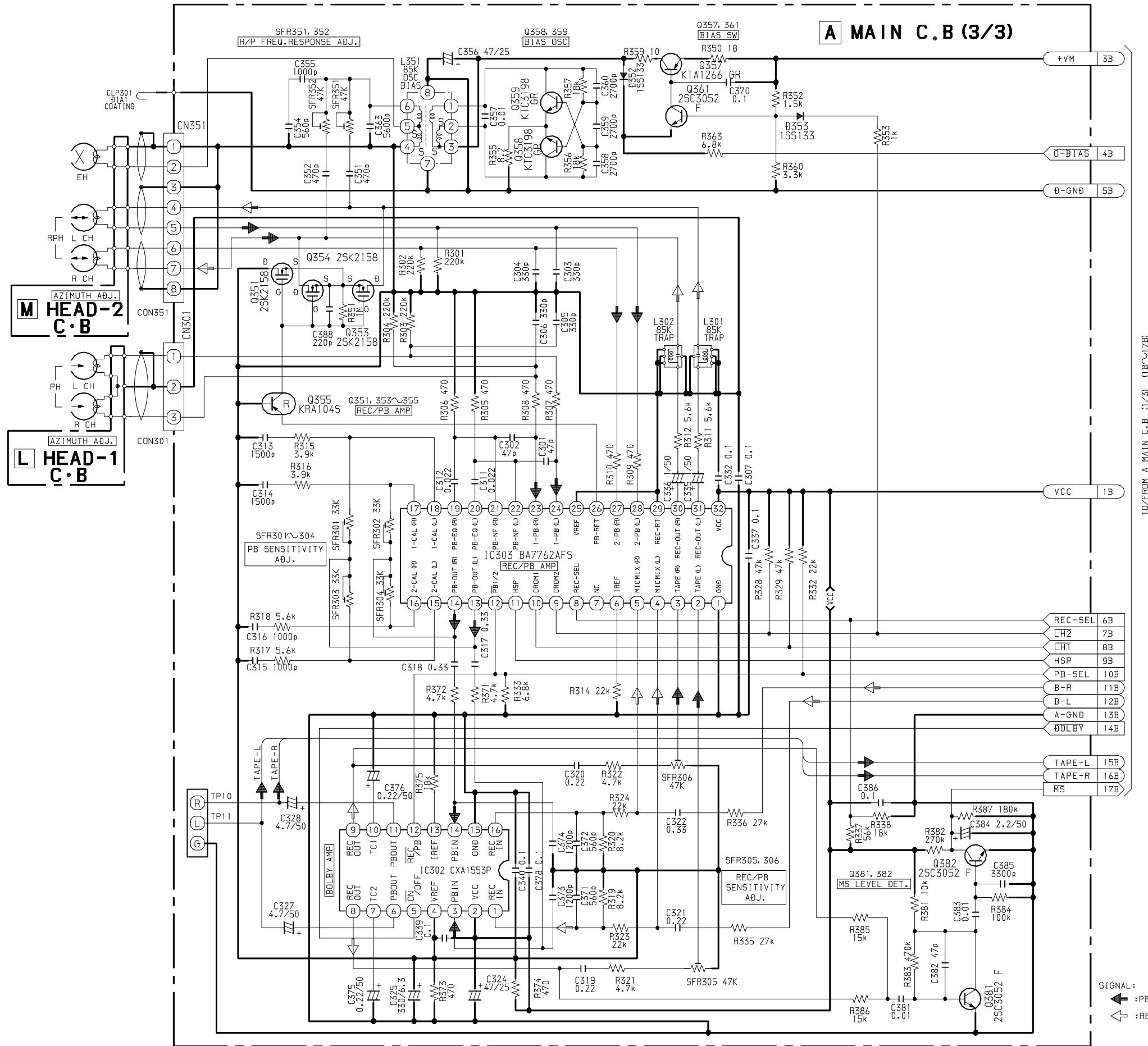


A MAIN C.B (1/3)

A MAIN C.B (2/3)



SCHEMATIC DIAGRAM - 3 (MAIN 3/3 / HEAD-1 / HEAD-2)

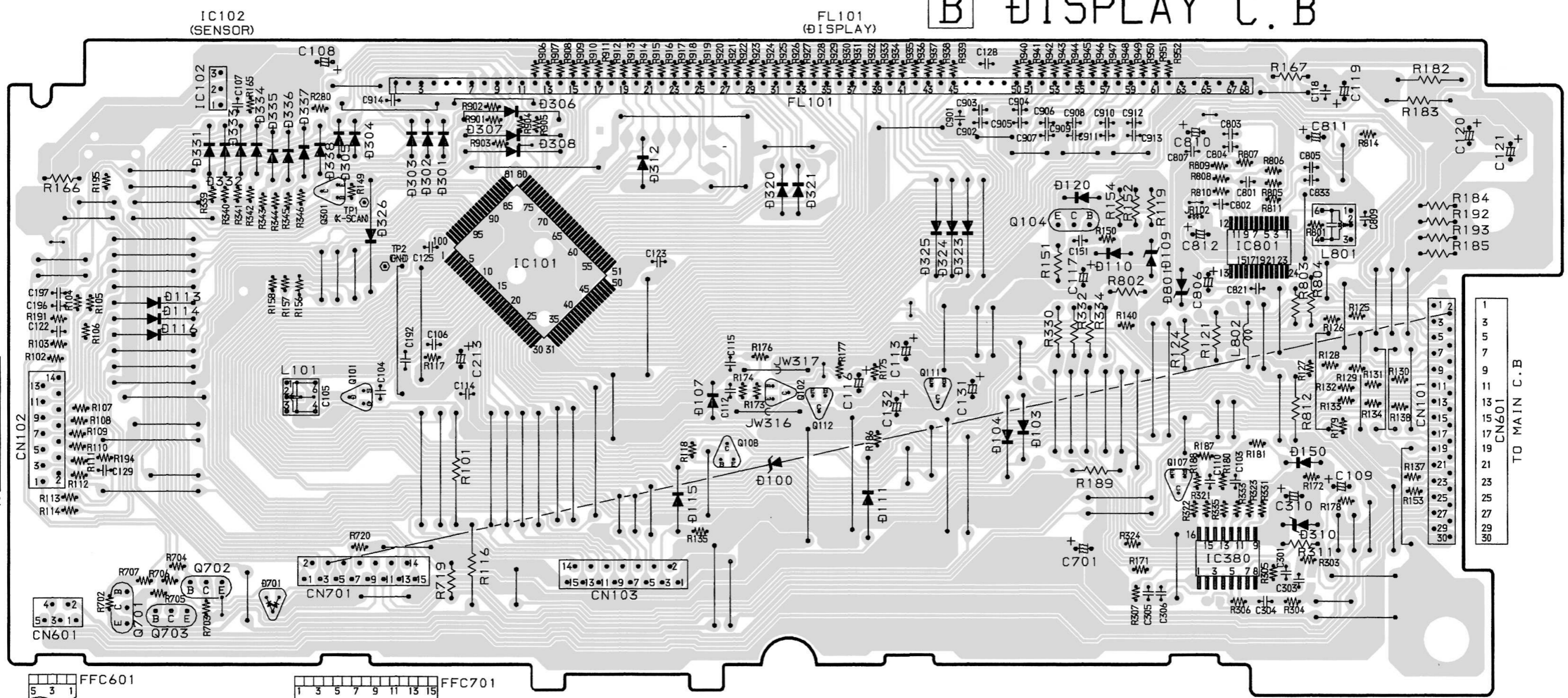


TO/FROM A MAIN C.B (1/3) (1B~17B)

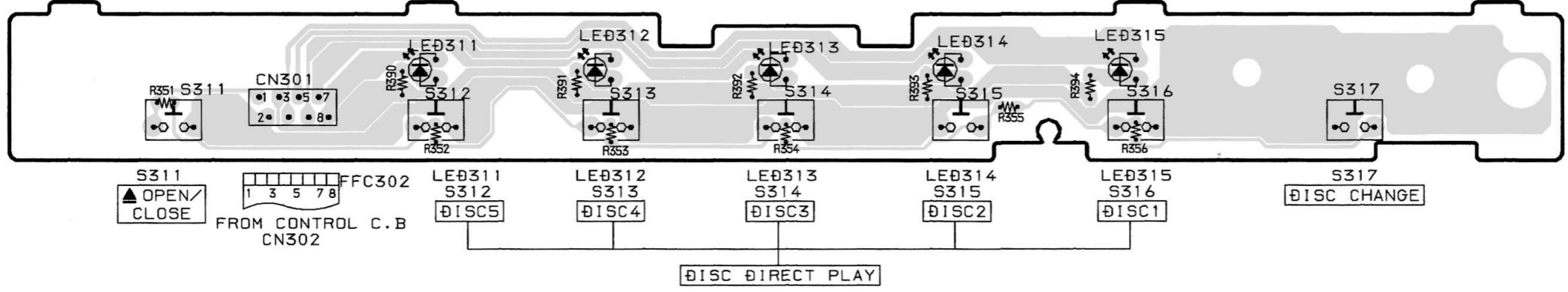
SIGNAL :
 ▲ : PB
 ◀ : REC

32	31	30	29	28	27	26	25	24	23	22	21	20	19	18	17	16	15	14	13	12	11	10	9	8	7	6	5	4	3	2	1
----	----	----	----	----	----	----	----	----	----	----	----	----	----	----	----	----	----	----	----	----	----	----	---	---	---	---	---	---	---	---	---

B DISPLAY C.B

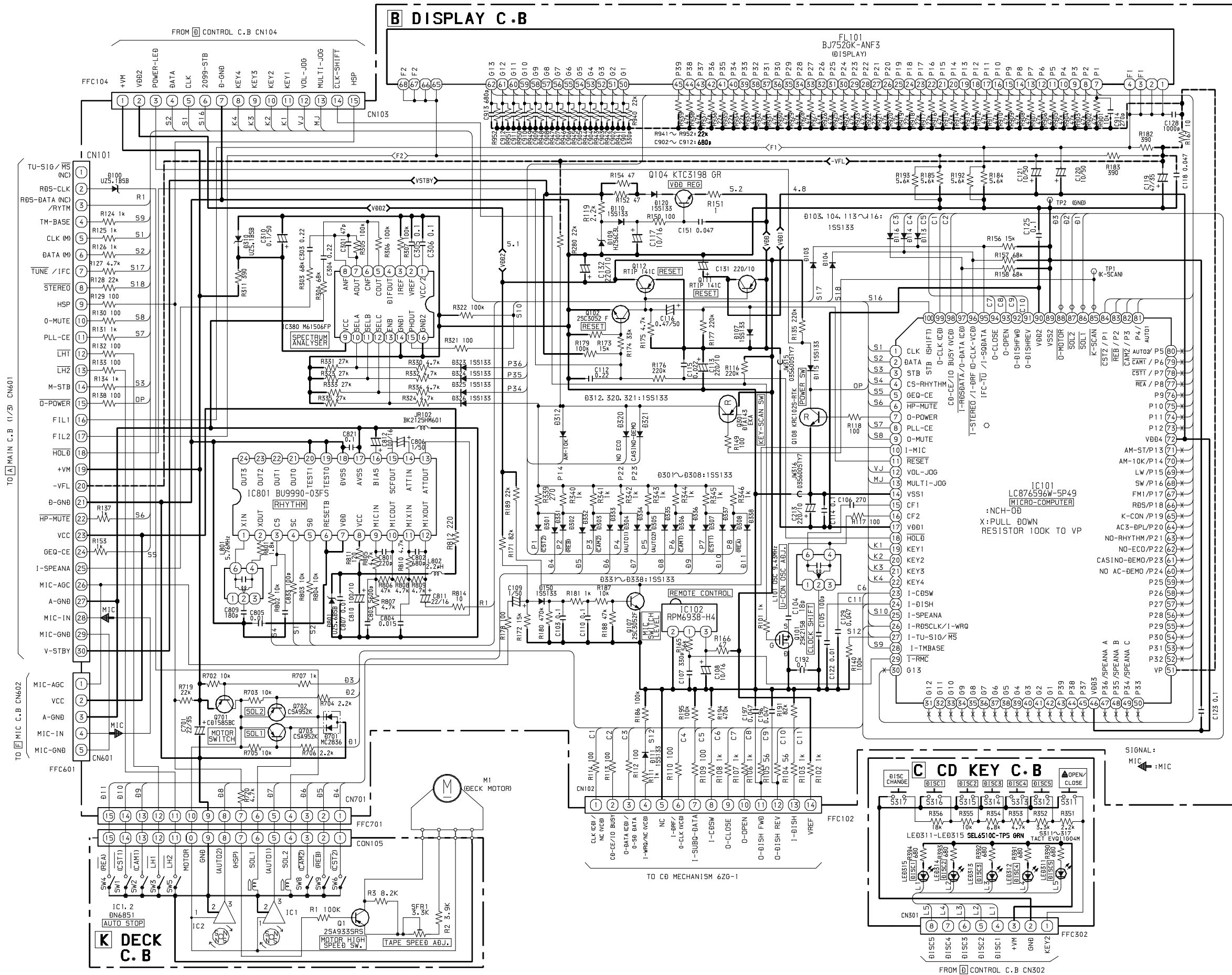


C CD KEY C.B



A
B
C
D
E
F
G
H
I
J
K
L
M
N
O
P
Q
R
S
T
U

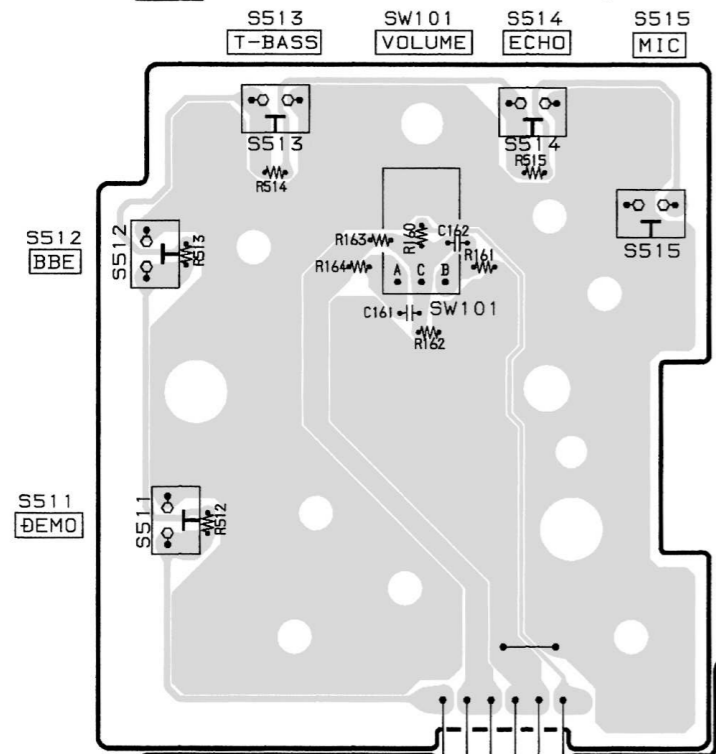
SCHEMATIC DIAGRAM - 4 (DISPLAY/CD KEY/DECK)



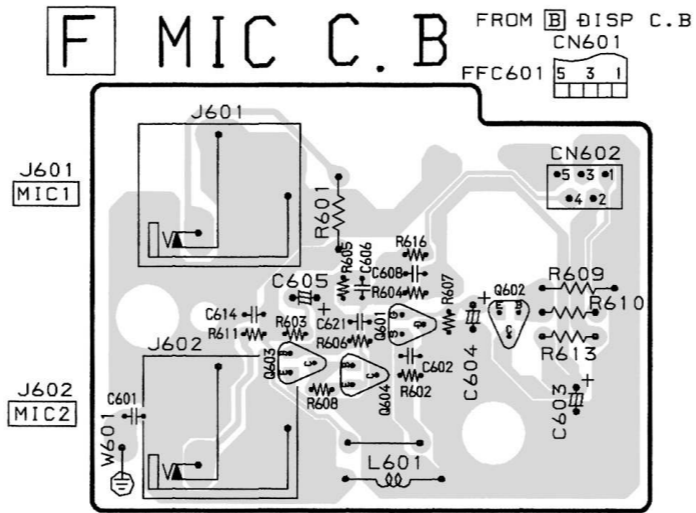
32 31 30 29 28 27 26 25 24 23 22 21 20 19 18 17 16 15 14 13 12 11 10 9 8 7 6 5 4 3 2 1

A
B
C
D
E
F
G
H
I
J
K
L
M
N
O
P
Q
R
S
T
U

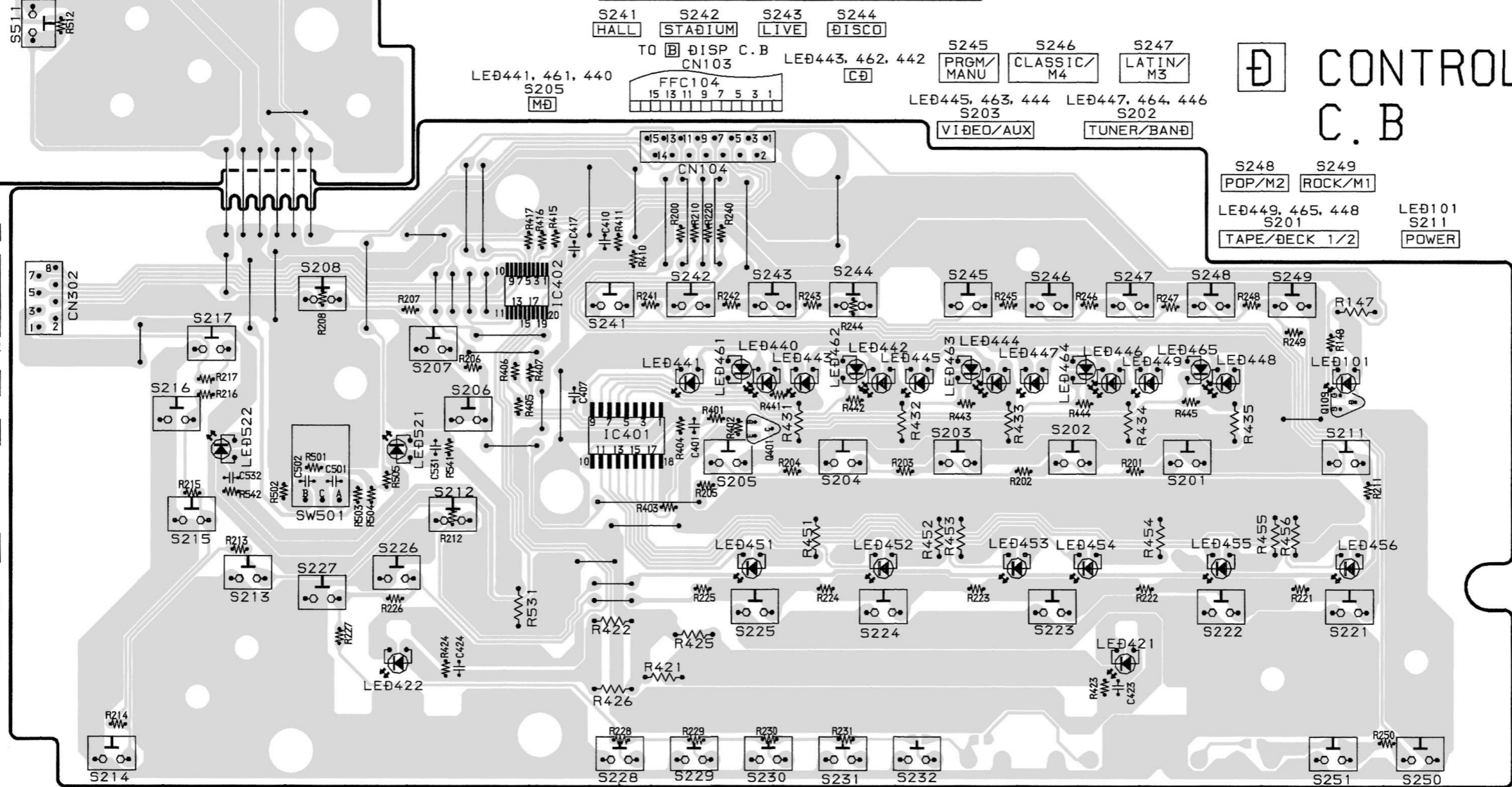
E VOLUME C.B



F MIC C.B

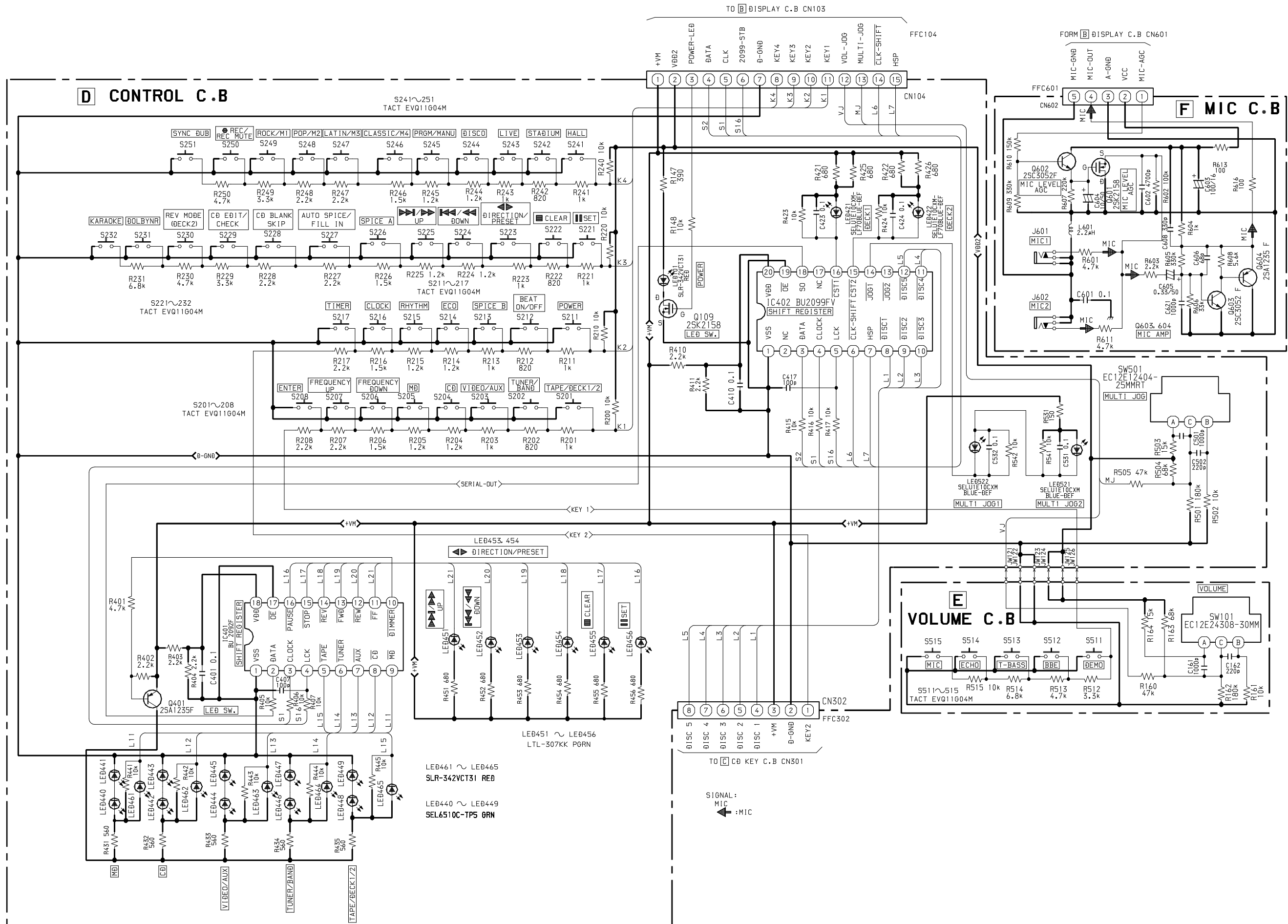


- S208 ENTER
- TO C.B. KEY
- C.B. CN301
- FFC302
- S217 TIMER
- S207 FREQUENCY UP
- S216 CLOCK
- S206 FREQUENCY DOWN
- LED522 MULTI JOG 1
- SW501 MULTI JOG
- LED521 MULTI JOG 2
- S215 RHYTHM
- S212 BEAT ON/OFF
- S227 AUTO SPACE/FILL IN
- S226 SPICE A
- S213 SPICE B



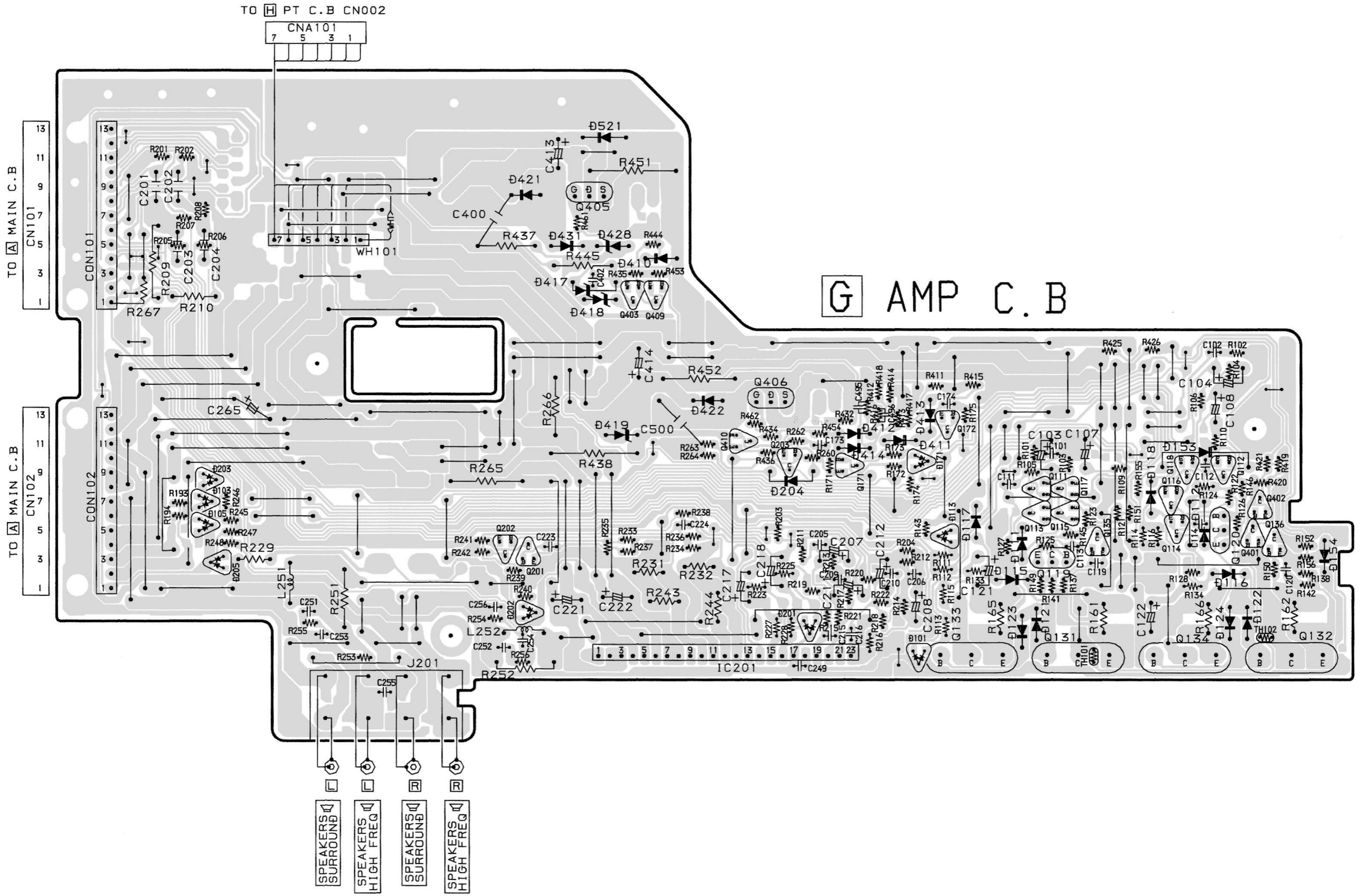
- S214 ECHO
- LED422 DECK 2
- S228 CD BLANK SKIP
- S229 CD EDIT/CHECK
- S230 REV MODE (DECK 2)
- S231 DOLB NR
- S232 KARAOKE
- LED421 DECK 1
- S251 SYN DUB
- S250 REC/REC MUTE
- S225 UP
- S224 DOWN
- S223 DIRECTION/PRESET
- S222 CLEAR
- S221 SET

SCHEMATIC DIAGRAM-5 (CONTROL/VOLUME/MIC)

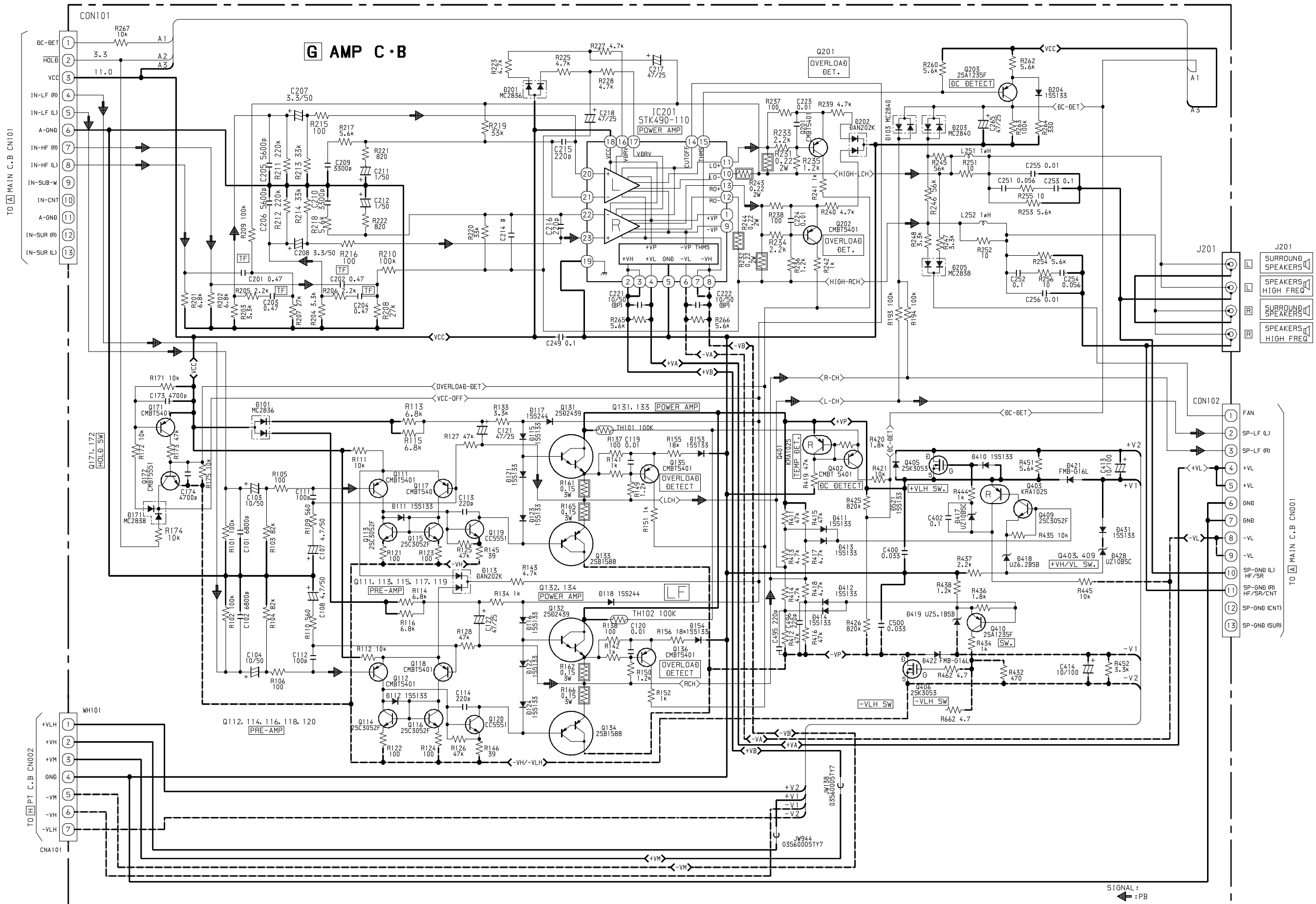


32	31	30	29	28	27	26	25	24	23	22	21	20	19	18	17	16	15	14	13	12	11	10	9	8	7	6	5	4	3	2	1
----	----	----	----	----	----	----	----	----	----	----	----	----	----	----	----	----	----	----	----	----	----	----	---	---	---	---	---	---	---	---	---

A
B
C
D
E
F
G
H
I
J
K
L
M
N
O
P
Q
R
S
T
U



SCHEMATIC DIAGRAM - 5 (AMP)



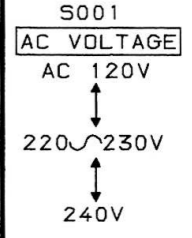
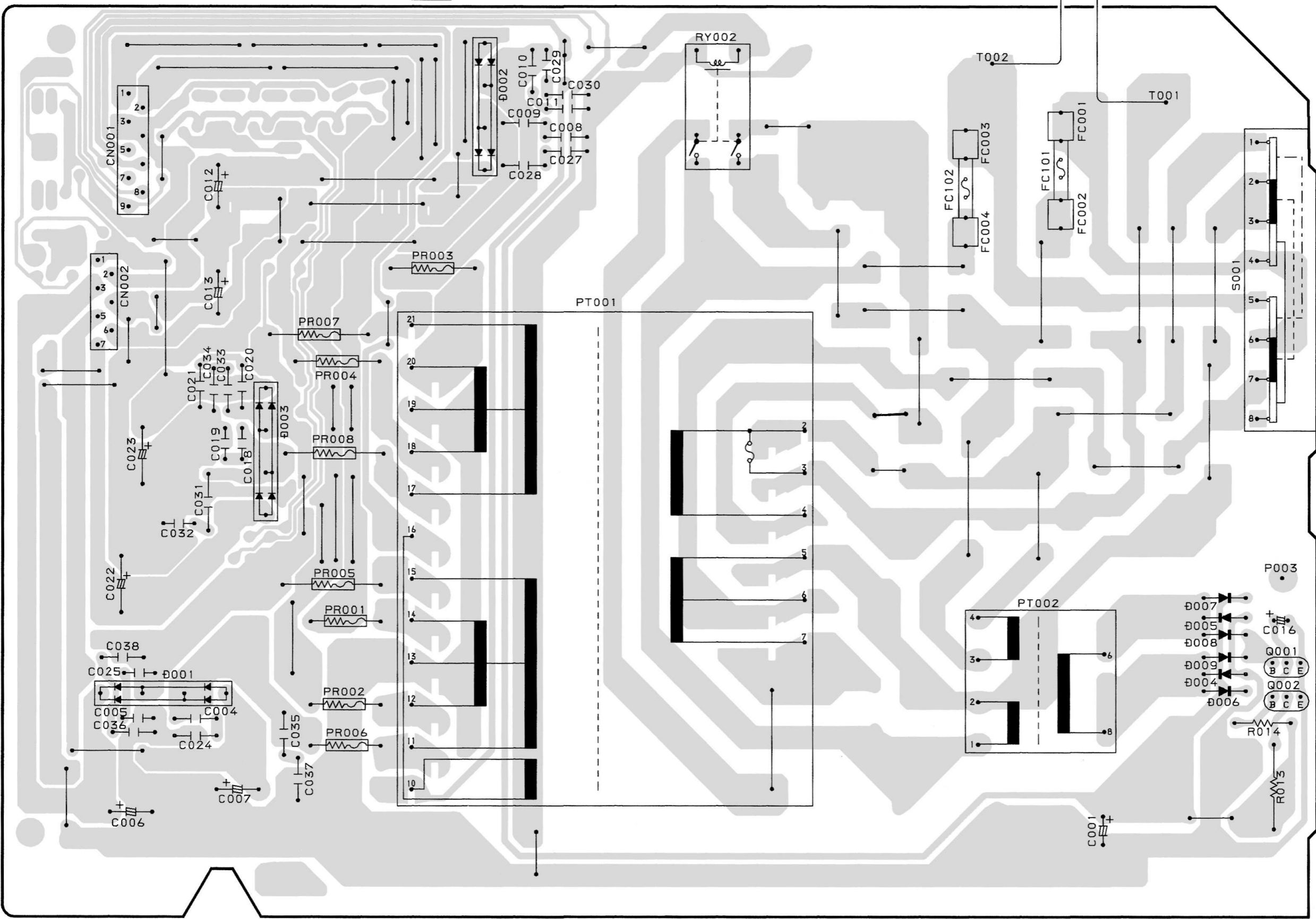
32 31 30 29 28 27 26 25 24 23 22 21 20 19 18 17 16 15 14 13 12 11 10 9 8 7 6 5 4 3 2 1

H PT C.B

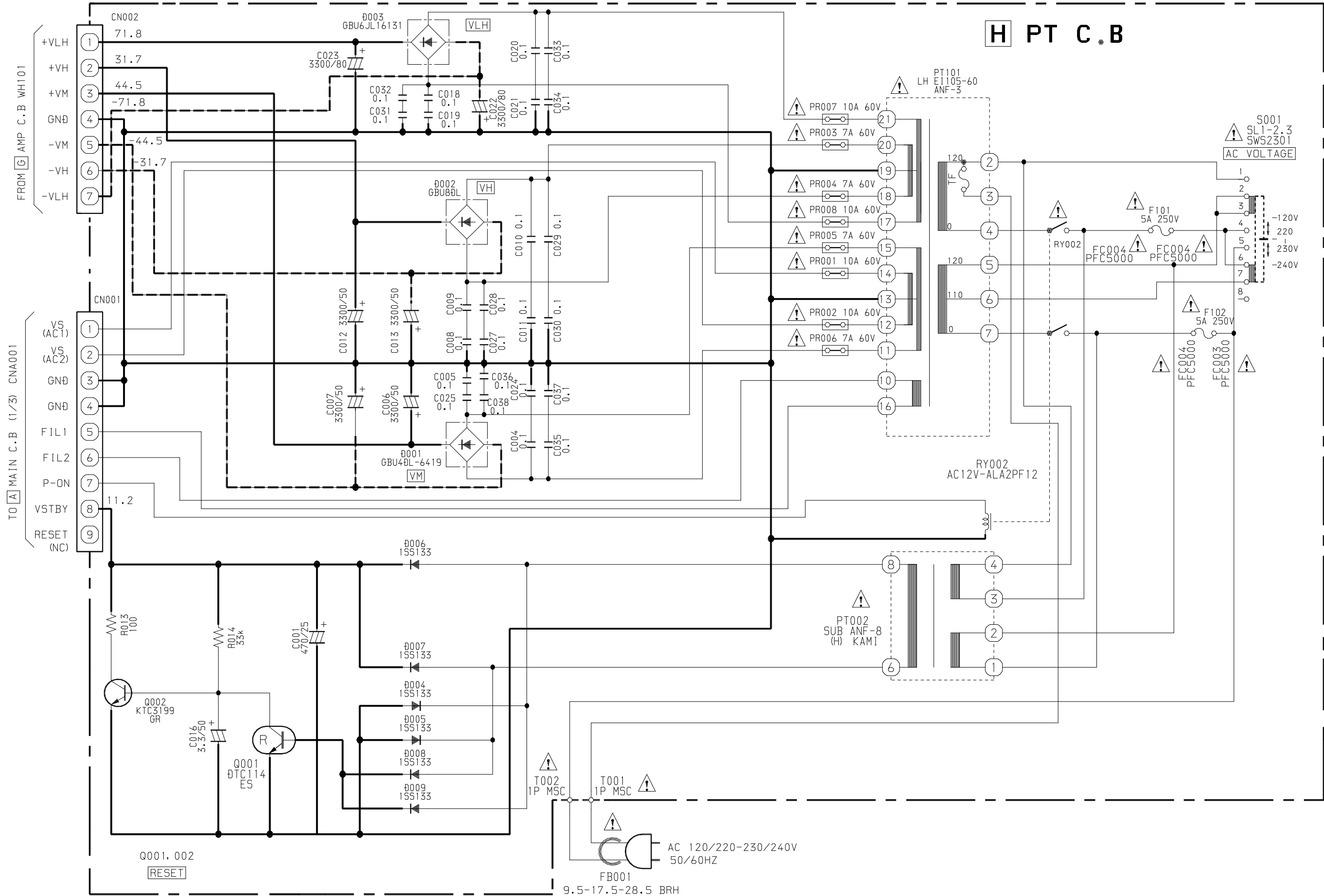
AC 120V/220-230V/240V
50/60HZ

FROM MAIN C.B
WH001
CNA001 1 3 5 7 9

FROM AMP C.B
WH101
CNA002 1 3 5 7



A
B
C
D
E
F
G
H
I
J
K
L
M
N
O
P
Q
R
S
T
U



MECHANICAL PARTS LIST 1 / 1

REF. NO.	PART NO.	KANRI NO.	DESCRIPTION	REF. NO.	PART NO.	KANRI NO.	DESCRIPTION
1	88-NF3-090-010		RING, FOOT	46	8A-NF3-208-010		HLLDR, CHAS L
2	8A-NF3-042-010		PANEL ASSY, TRAY	47	87-NF4-221-010		HLLDR, CABLE
3	8A-NF3-029-010		BOX, CASS R	48	87-A91-423-010		FAN, AD0612DS-D7OGL
4	8A-NF3-040-010		PANEL, CASS R	49	87-A80-148-010		AC CORD ASSY, E BLK
5	8A-NF3-059-010		WINDOW, CASS R	50	87-085-185-010		BUSHING, AC CORD (E)
6	8A-NF3-039-010		PANEL, CASS L	51	8A-NF3-209-010		HLLDR, CHAS R
7	8A-NF3-058-010		WINDOW, CASS L	52	8A-NF3-211-010		HLLDR, SIDE R
8	8A-NF3-028-010		BOX, CASS L	53	8A-NF3-229-210		HLLDR, BRACKET
9	8A-NF3-090-010		REFLECTOR, CASS L	54	8Z-NF3-210-010		GUIDE, FL
10	81-532-080-010		LABEL, CASS. COMPT	55	8A-NF3-212-010		HLLDR, REAR
11	8A-NF3-091-010		REFLECTOR, CASS R	56	84-ZG1-245-210		CAP, OPTICAL
12	8A-NF3-048-010		PANEL, REFLECTOR- CD	57	8A-NF3-026-110		CABI, BOTTOM
13	8A-NF3-049-010		PANEL, KEY-CD	58	8Z-NF3-048-010		COVER, BOTTOM
14	8A-NF3-047-010		PANEL, CD	59	82-NF5-219-010		SPR-T, EJECT 2 (SIN)
15	8A-NF3-071-010		KEY, CD	60	87-NF4-217-110		HLLDR, LOCK 2
16	8A-NF3-089-010		REFLECTOR, CD	61	87-064-185-010		HLLDR, WIRE
17	8A-NF3-203-010		GUIDE, LED-CD	62	8A-NF8-206-010		HLLDR, PWB M
18	87-NF4-216-010		HLLDR, LOCK 1	63	8A-NF3-221-010		HLLDR, IC-VM
19	86-NF9-224-010		SPR-C, LOCK	64	8A-NF3-225-010		COVER, HLLDR
20	82-NF5-229-010		PLATE, LOCK	65	8A-NF3-223-010		HLLDR, FAN
21	87-NF8-220-010		DMPR, 150	66	87-A91-711-010		FAN, 3110GL-B4W-B34-H02 -400MM
22	82-NF5-218-010		SPR-T, EJECT 1 (SIN)	67	8A-NF4-015-010		CABI, REAR J LHSK1M
23	8A-NF3-082-010		KNOB, RTRY JOG	68	8A-NF3-228-010		HLLDR, PWB-PT
24	8A-NF3-087-010		REFLECTOR, JOG	69	8A-NF3-027-010		CABI, STEEL
25	8A-NF3-077-010		RING, JOG H	A	87-067-703-010		TAPPING SCREW, BVT2+3-10
26	8A-NF3-081-010		KNOB, RTRY VOL	B	87-067-581-010		TAPPING SCREW, BVT2+3-15
27	8A-NF3-076-010		RING, VOL	C	87-721-097-410		QT2+3-12 GLD
28	8A-NF3-001-010		CABI, FR	D	87-591-095-410		TAPPING SCREW, QIT+3-8 (GLD)
29	8A-NF3-034-010		PANEL, FR LH	E	87-B10-190-010		BVT2+3-22 W/O SLOT
30	8A-NF3-052-010		WINDOW, DISP NT-96	F	87-067-689-010		TAPPING SCREW, BVT+3-8
31	8A-NF3-063-010		KEY ASSY, OPE	G	87-067-761-010		TAPPING SCREW, BVT2+3-10
32	8A-NF3-073-110		KEY, REC U	H	87-NF4-224-010		S-SCREW, IT3B+3-8 CU
33	8A-NF3-065-010		KEY, KARAOKE	I	87-721-096-410		QT2+3-10 GLD
34	8A-NF3-061-010		KEY, GEQ	J	87-067-758-010		BVT2+3-12 W/O SLOT
35	8A-NF3-067-010		KEY, BBE	K	87-067-975-010		S-SCREW, IT+4-8
36	8A-NF3-072-010		KEY, FUNC	L	87-067-641-010		UTT2+3-8 (W/O SLOT) BL
37	8A-NF3-088-010		REFLECTOR, FUNC	M	87-067-579-010		TAPPING SCREW, BVT2+3-8
38	8A-NF3-068-010		KEY, JOG				
39	8A-NF3-062-010		KEY, DSP				
40	8A-NF3-069-010		KEY, SPICE				
41	8A-NF3-070-010		KEY, ECO				
42	8A-NF3-201-010		GUIDE, LED-FUNC				
43	8A-NF3-213-010		HLLDR, HT-SINK L				
44	8A-NF3-214-010		HLLDR, HT-SINK R				
45	8A-NF3-210-010		HLLDR, SIDE L				

COLOR NAME TABLE

Basic color symbol	Color	Basic color symbol	Color	Basic color symbol	Color
B	Black	C	Cream	D	Orange
G	Green	H	Gray	L	Blue
LT	Transparent Blue	N	Gold	P	Pink
R	Red	S	Silver	ST	Titan Silver
T	Brown	V	Violet	W	White
WT	Transparent White	Y	Yellow	YT	Transparent Yellow
LM	Metallic Blue	LL	Light Blue	GT	Transparent Green
LD	Dark Blue	DT	Transparent Orange	GM	Metallic Green
YM	Metallic Yellow	DM	Metallic Orange	PT	Transparent Pink

SPEAKER PARTS LIST SX-WNT99 <YLSK2M>

REF. NO.	PART NO.	KANRI NO.	DESCRIPTION	REF. NO.	PART NO.	KANRI NO.	DESCRIPTION
1	8A-NS3-001-010		PANEL, FR	11	88-NS5-610-010		CORD, SPKR
2	8A-NS3-002-010		PANEL, TW L	12	88-NS5-611-010		CORD, SPKR B/L
3	8A-NS3-003-010		PANEL, TW R	13	8A-NSJ-006-010		BADGE, AIWA S35
4	8A-NS3-006-010		PANEL, TOP	14	8A-NS3-014-010		CABI, TOP
5	8A-NS3-010-010		PROTECTOR, SQA	15	8A-NS3-033-010		PANEL, DUCT G
6	8A-NS3-011-010		PROTECTOR, TWA	16	8A-NS3-034-010		PANEL, RING G
7	8A-MS1-602-010		SPKR, W 200	17	8A-NS3-009-010		ADAPTOR
8	8A-NS3-602-010		SPKR, M 100				
9	8A-MS2-605-110		SPKR, TW 60				
10	88-NSK-610-010		SPKR, CERAMIC ASSY				

ACCESORIES / PACKAGE LIST

REF. NO.	PART NO.	KANRI NO.	DESCRIPTION
1	8A-NF3-908-010		IB, LH (P) KIT
2	87-006-225-010		AM LOOP ANT NC2
3	87-043-115-010		ANT, FEEDER FM
4	8Z-NF5-702-010		RC UNIT, RC-ZAS04

アイワ株式会社 〒110-8710 東京都台東区池之端1-2-11 ☎03(3827)3111 (代表)
AIWA CO.,LTD. 2-11, IKENOHATA 1-CHOME, TAITO-KU, TOKYO 110, JAPAN TEL:03 (3827) 3111