

Experimenter's Corner

By Forrest M. Mims

THE LM339 QUAD COMPARATOR

Multiple integrated circuits are a real boon to the electronics experimenter. They reduce a project's parts count, and are less expensive than the equivalent number of single-function IC's. Furthermore, they make the assembly of projects requiring several IC's of the same type much easier.

A particularly useful multiple circuit IC is the LM339 quad comparator. This versatile chip contains four independent voltage comparators which can be operated from a single-ended power supply. The pin diagram for this IC (Fig. 1) shows how each of the comparators is connected.

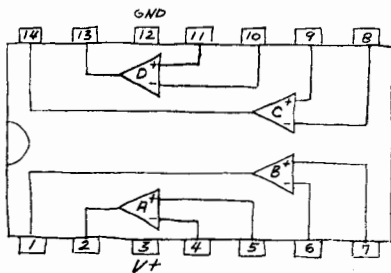


Fig. 1. Pin diagram of the LM339.

Before examining some practical applications for the LM339, let's briefly review comparator operation. As its name implies, a comparator literally compares two voltages. In a typical application, one voltage is supplied by a fixed reference and the other by a variable input signal. Whenever the signal voltage exceeds the reference voltage, the comparator switches on.

You can understand how a comparator works by thinking of it as an op amp without a feedback resistor, and therefore, having the highest possible gain. If you have used an op amp in this mode, you know that a relatively small input signal will cause the output to swing fully

on. Actually, a comparator is merely a modified op amp, and you can often operate an op amp as a comparator.

VCO Circuits. National Semiconduc-

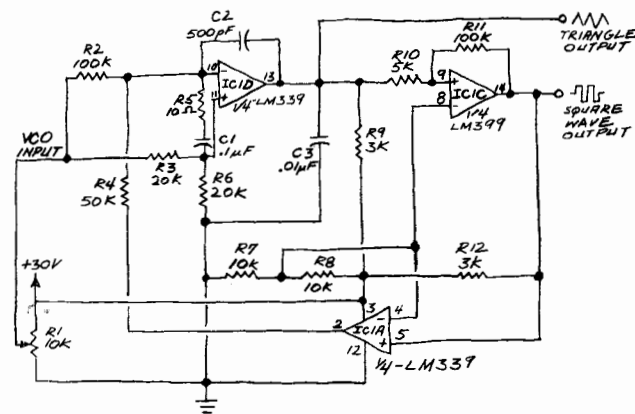


Fig. 2. Voltage-controlled oscillator using the LM339.

tor has published a number of circuit applications for the LM339 in application note AN-74 (R.T. Smathers, et al., "LM139/LM239/LM339: A Quad of Independently Functioning Comparators," January 1973). One of the most interesting circuits is the voltage controlled oscillator (VCO) shown in slightly modified form in Fig. 2.

A VCO is an oscillator whose frequency is governed by an input voltage. Two

important applications for VCO's are phase locked loops and analog telemetry systems. In the latter role, the variable voltage from a sensor is used to control the frequency of a transmitted tone. Changes in the tone frequency can be analyzed with a decoder circuit to determine variations in the sensor voltage.

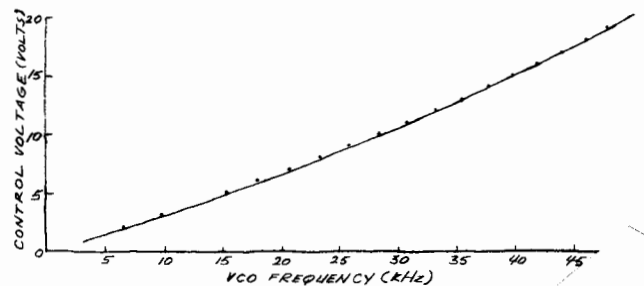
The VCO of Fig. 2 provides both square and triangle wave outputs. The input control voltage is provided by potentiometer R1 which is connected as a voltage divider. But you can use any variable voltage source by removing R1 from the circuit and applying the control voltage between the input of the VCO and pin 12 (ground) of the LM339.

Figure 3 is a graph I plotted for the circuit of Fig. 2. The graph shows the VCO frequency versus the input voltage. Note that the relationship between the two variables is nearly linear. The graph also illustrates the wide dynamic range of the

circuit. With an input of 1 volt, the output frequency was 3447 Hz and the square waves at pin 1 were 150 µs wide. With an input of 20 volts, the frequency was 50,869 Hz and the square waves at pin 1 only about 10 µs wide.

With the values specified, the VCO will accept a minimum control voltage of about 40 millivolts, resulting in an output frequency of 8 Hz. You can increase C1 to 1 µF for even lower frequencies.

Fig. 3. Control voltage vs operating frequency of LM339 vco.



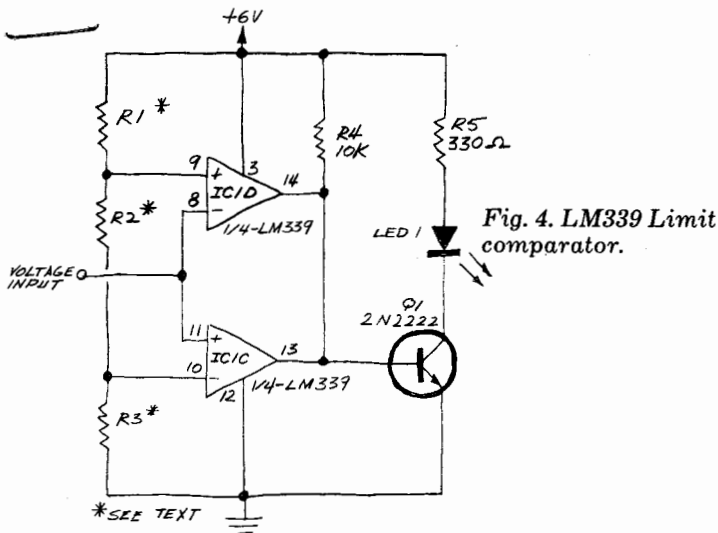


Fig. 4. LM339 Limit comparator.

Though all the results given here were made when a 30-volt power supply was used, the circuit will operate at much lower voltages.

Limit Comparators. Another interesting circuit is the limit comparator shown in Fig. 4. The circuit uses two of the comparators in the LM339, and its operation is straightforward. When both comparators are off, Q1 is turned on by the base bias from R4. In turn, Q1 activates LED1. If either comparator turns on, Q1's base is shorted to ground, and the LED turns off.

This circuit has a variety of voltage sensing and indicator applications. The voltages at pins 9 and 10 of the LM339 determine if either comparator will be turned on. They are established by the resistance ratios in the voltage divider R1 R2 R3.

Resistors R1 and R3 determine the voltage levels at which the LED switches

on and off. Because R2 is connected between pins 9 and 10, reducing its resistance causes the switching voltages of the two comparators to approach one another. Increasing R2's resistance causes the switching voltages of the comparators to diverge. Accordingly, the resistance of R2 can be changed to adjust the input voltage range over which the LED stays on.

By using potentiometers for R1, R2, and R3, I was able to adjust the circuit so that the LED turns on when very small input voltages are applied. For example, when R1 is about 500 ohms, R2 is about 1200 ohms, and R3 is about 1 megohm, the LED will begin to turn on when the input signal is only 4 millivolts! The LED will reach maximum brightness at 6 mV and turn off at 8 mV. When R1 and R3 are both about 15,000 ohms and R2 is 25,000 ohms, the LED will turn on at an input signal of 1.5 volts and turn off when the input reaches 4.2 volts.

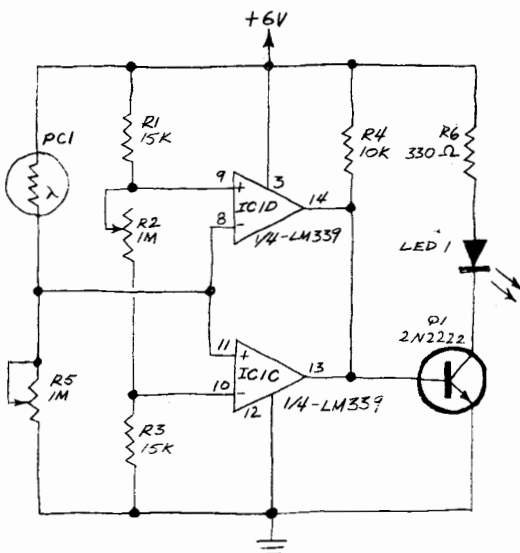


Fig. 5. Limit comparator operated as a programmable light meter

Be sure to experiment with the values of R1, R2 and R3. Also, you might want to try replacing Q1 with a PNP transistor (2N2907, 2N3906, etc.) to reverse the operation of the LED. A PNP transistor will cause the LED to be normally on and to turn off when a desired voltage appears at the input. If you try this substitution, reverse the emitter-collector connections for Q1 shown in Fig. 4.

I mentioned earlier that the limit comparator of Fig. 4 has a variety of voltage sensing and indicator applications. Fig 5 shows one such application, a programmable light meter. The light sensor is a standard cadmium sulfide (CdS) photocell with a high dark resistance and a low light resistance.

Potentiometers R2 and R5 can be adjusted to cause the LED to glow only at a desired light level, or to glow when the light either exceeds or falls below a pre-set level. Incidentally, note that photocell PC1 and R5 of Fig. 5 are simply added to the circuit of Fig. 4. Since these two components form a voltage divider, you might want to try experimenting with their location in the circuit to reduce the component count. For example, try substituting PC1 for R1 and R5 for R3. ◊

PROFESSIONAL DISCOUNTS

Texas Instruments electronic calculator

TI-30	\$22.95	SR-51-II	\$59.95
1600	21.95	SR-56	79.95
1650	26.95	SR-52	199.95
2550-II	29.95	PC-100	199.95
SR-40	34.95	TI-5050M	99.95
Bus Anst.	42.50	5040-PD	119.95
5100	54.95	Libraries	26.00
Little Prof. (2 min.)	\$16.95		



HEWLETT PACKARD

(No credit cards)		HP-27	\$154.00
HP-21	\$ 71.00	HP-25C	175.00
HP-22	109.95	HP-67	395.00
HP-25	127.60	HP-97	664.95

NOVUS NATIONAL SEMICONDUCTOR

Math 4510 (2 min.)	\$17.88	Statistician PR 6035	\$39.95
Scientist 4520	29.95	NS-852	24.95
Scientist PR 4525	54.95	NS-4615	39.95
Financier 6020	26.45	NS-4640	54.95
Statistician 6030	26.45	NS-4650	44.95
Financier PR 6025	39.95	NS-4660	59.95

In California call (213) 370-5795 or
ORDERS ONLY CALL (800) 421-0367 (other than CA.)
 Send money order. Pers. ck (2 wks. to clear); in CA., add 6% sales tax. Add \$2.50 min. shipping charges US only \$4.00 for SR-52, PC-100, HP-67, 97.
 Canada min. shipping charge \$6.50.
 WE SHIP UPS AIR.

tkenterprises
 BETTER BUSINESS PRODUCTS

16611 HAWTHORNE BLVD., LAWNSDALE, CA 90260
 (213) 370-5795